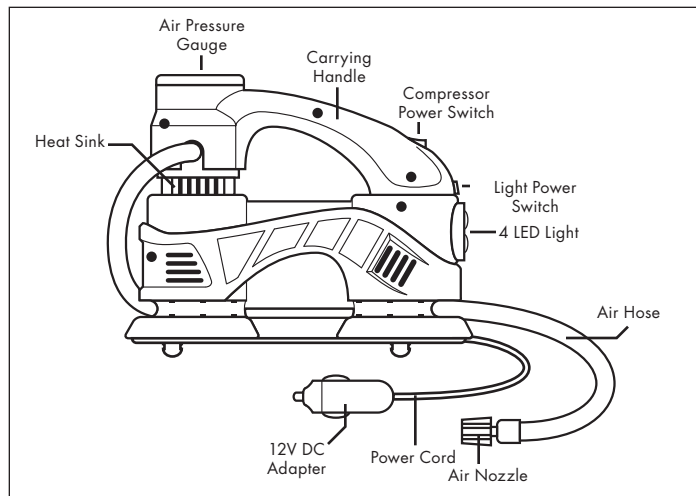


Hi Speed Air Compressor Compresor de Aire



User's Manual
Manual de Usuario



Thank you for purchasing the Hi Speed Air Compressor by Wagan Tech. With minimal care and proper treatment, it will provide years of reliable service. Please read and understand all operating instructions carefully before use. **KEEP THIS USER MANUAL FOR FUTURE REFERENCE.**

Features

- Superior quality and convenient to use.
- Streamlined shape with ergonomic design.
- High 35L/minute flow rate
- Light with 4 bright, energy-saving LEDs

- Strong, impact resistant rubber housing
- 12V DC powered
- High quality brass air nozzle
- Easy to use air pressure gauge
- Special winding design for cable and air hose makes the product compact and protects the wire and air hose effectively.
- Offers a wide range of applications. Besides inflating auto tires, the 3 included adapter tips can be used for bicycles, motorcycles, sports equipment and other inflatable items. Use it to keep your auto tires inflated, help extend tire life and improve fuel efficiency. It can also be used for sudden air leaks.

General Safety Rules

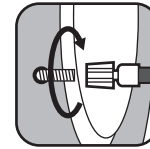
- Before using our product, please check the lighter socket (12V DC output) to make sure there is no rust or any other residue in order to prevent any damage or danger caused by poor conductivity and power supply overheating.
- Please check the recommended air pressure of the vehicle tire and carefully watch the pressure gauge while inflating to avoid over-inflating your tire. The general pressure of most car tires is 2.5–3.0 kg/cm³.
- You should start the engine when using the air compressor to make sure the battery capacity and pump work normally.
- Do not touch the metal heat sink or the air hose while in use or just after use.
- After 15 minutes of continuous inflation, please have the product rest for 20 minutes and restart once it fully cools down.
- After use, please tuck the power cord and air hose into their locked slots to prevent any damage to the cord or hose.

- Use only 12V direct current power sockets. Do not use product with any other type of power source.
- Do not tangle the power cord together to avoid potential electrical danger.
- If the unit emits abnormal noise while in use, please stop use immediately and check for causes and problems.
- Keep away from children.
- Avoid dropping the product and/or cause severe impact to the compressor.
- Do not overexpose the unit to direct sunlight or store the unit under sunlight.
- Do not use in damp areas or around flammable materials.
- Do not attempt to make any modifications, disassemble or repair by yourself or by any non-technicians.

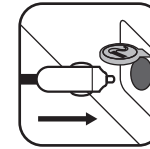
Using the Air Compressor

(Images on page 5)

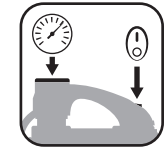
1. Attach the air nozzle to the tire valve and tighten it clockwise.
2. Turn on the car engine.
3. Plug the 12V DC adapter into the cigarette lighter socket.
4. Press the Power Switch to ON to start the air compressor. Carefully observe the air pressure using the Pressure Gauge and press the Power Switch to OFF once the desired PSI level is reached.
5. Twist the air nozzle off the tire valve counter-clockwise and remove the 12V Adapter out from the cigarette lighter socket.
6. Turn off the car engine.
7. Wrap the wire and air hose and tuck them into their locking slots.



Attach Nozzle to tire valve.



Plug DC Adapter into power socket.



Turn on compressor, check pressure gauge.

4-LED Light

The Hi Speed Air Compressor features a 4-LED light in the front to help while working at night. Simply press the Light button just above the light to turn it on. Press it again to turn off. It requires the 12V DC adapter to be plugged in and powered.

Specifications

Working Voltage	12V DC
Rated Power	120W (10 Amps)
Max Run Time	15 minutes
Flow Rate	35 L/min (1.24 ft ³ /min)
Air Hose	60 cm (23.6 in)
DC Power Cord	3 m (10 ft)
Max PSI	100
Weight	1.55 Kg (3.42 lbs)

Please activate my limited warranty for WAGAN Corp.

Name	
Mailing address	
City	
State, Zip code	
E-mail address	
Item purchased	Item no.
Store name	
Date of purchase	
Signature	Date

All WAGAN Corporation Products must be registered within (30) days of purchase to activate this warranty. Mail the complete registration form, along with a copy of the original sales receipt to:

Attn: Customer Service
WAGAN Corporation
31088 San Clemente St.
Hayward, CA 94544
U.S.A.

Detach and return top portion to the address below.

WAGAN Corp. Limited Warranty

All WAGAN Corporation products are warranted to the original purchaser of this product.

Warranty Duration: This product is warranted to the original purchaser for a period of one (1) Year from the original purchase date, to be free of defects in material and workmanship. WAGAN Corporation disclaims any liability for consequential damages. In no event will WAGAN Corporation be responsible for any amount of damages beyond the amount paid for the product at retail. In the event of a defective item, please contact WAGAN Corporation at (800) 231-5806 to obtain a Returned Merchandise Authorization number (RMA#), and return instructions. Each item returned will require a separate RMA#. After you have received the RMA# and the return instructions from WAGAN Corporation, please follow the instructions and send the item with PREPAID SHIPPING, along with all of the required documentation, a complete explanation of the problem, your name, address and daytime phone number. WAGAN Corporation will, at its option, replace or repair the defective part.

A Returned Merchandise Authorization number (RMA#) is REQUIRED when sending in any defective item. WAGAN Corporation is not responsible for any item(s) returned without an official Returned Merchandise Authorization number. The item(s) must be returned with prepaid shipping. WAGAN Corporation is not responsible for any shipping charges incurred in returning the item(s) back to the company for repair or replacement. This warranty is void if the product has been damaged by accident, in shipment, unreasonable use, misuse, neglect, improper service, commercial use, repairs by unauthorized personnel or other causes not arising out of defects in materials or workmanship. This warranty does not extend to any units which have been used in violation of written instructions furnished.

Warranty Disclaimers: This warranty is in lieu of all warranties expressed or implied and no representative or person is authorized to assume any other liability in connection with the sale of our products. There shall be no claims for defects or failure of performance or product failure under any theory of tort, contract or commercial law including, but not limited to negligence, gross negligence, strict liability, breach of warranty and breach of contract.

Warranty Performance: During the above one (1) Year warranty period, a product with a defect will be replaced with a comparable model when the product is returned to WAGAN Corporation with an original store receipt. The replacement product will be in warranty for the balance of the one (1) Year warranty period. ©2008 WAGAN Corp. Updated August 2008



www.wagan.com
customerservice@wagan.com
USA & CAN Toll Free: 1.800.231.5806
Tel: 1.510.471.9221

31088 San Clemente Street
Hayward, CA 94544
U.S.A.

All Rights Reserved
©2010 Wagan Corporation
Wagan and wagan.com are trademarks used by Wagan Corporation
Revised April 2010

Todos los derechos reservados
© Corporación Wagan 2010
WAGAN y Wagan.com son marcas registradas de la Corporación Wagan
Revisado Abril 2010