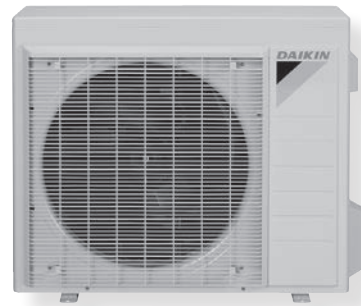


HIGH-EFFICIENCY WALL-MOUNTED DUCTLESS SYSTEMS

PERFORMANCE:

- 15 SEER
- UP TO 12.2 EER
- 8.2 HSPF



Product Features

- Inverter Compressor
- 208/230/1 Power Supply
- Cooling Range: 50° - 115° F
- Heating Range: 5° - 75° F
- Pre-charged for up to 33 ft of Liquid Line
- Indoor Sound Pressure as Low as 19 dB(A)
- Outdoor Sound Pressures as Low as 46 dB(A)
- Washable Air Filter
- Econo Mode
- Program Dry Function
- Powerful Operation Mode
- Wireless Remote Controller
- Outdoor Unit Quiet Operation
- Auto Changeover (Heat Pump Only)
- Auto Fan Speed Control
- Self-Diagnostics with Digital Display
- Auto Restart after Power Failure
- Anti-Corrosion Treatment on Heat Exchanger
- Max Piping (09/12 MBH): 49' Length, 39' Height
- Max Piping (18/24 MBH): 98' Length, 66' Height



* Complete warranty details available from your local dealer or at www.daikincomfort.com. To receive the 10-Year Parts Limited Warranty, online registration must be completed within 60 days of installation. Online registration and some of the additional requirements are not required in California or Quebec.

	R	X	N	09	NM	VJ	U
	1	2	3	4,5	6,7	8,9	10
Unit Type	R Air-Cooled Single Split Outdoor Unit						Standard Compatibility U -- United States
System Type	X R-410A, Heat Pump K R-410A, Cooling Only					Power Supply VJ -- Single Phase 208/230V	
Efficiency Level	N Standard _ Mid (Blank)	S High G Highest				Series NM -- Major Design Category	
				09 -- 9,000 BTU/h 12 -- 12,000 BTU/h			Capacity 18 -- 18,000 BTU/h 24 -- 24,000 BTU/h

	FT	X	N	18	NM	VJ	U
	1,2	3	4	5,6	7,8	9,10	11
Indoor Type	CD Slim Duct* CT Wall Mount* F Indoor Unit FD Slim Duct FT Wall Mount						Standard Compatibility U -- United States
System Type	X R-410A, Heat Pump K R-410A, Cooling Only					Power Supply VJ -- Single Phase 208/230V	
Efficiency Level	G Highest N Standard _ Mid (blank)	Q R-410A Heat Pump S High				Series NM -- Major Design Category	
				09 -- 9,000 BTU/h 12 -- 12,000 BTU/h			Capacity 18 -- 18,000 BTU/h 24 -- 24,000 BTU/h

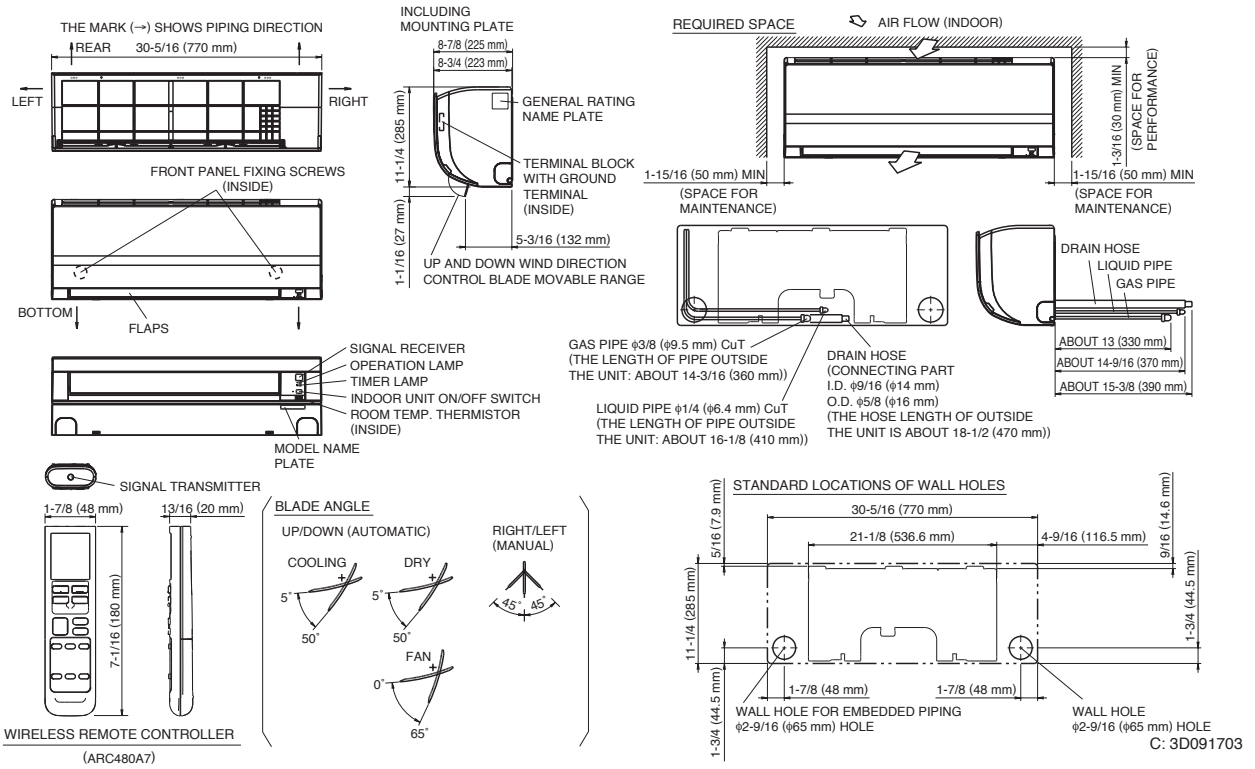
SYSTEM PERFORMANCE					
Nominal Capacity Class		9,000	12,000	18,000	24,000
Cooling Capacity (Rated)	BTU/h	9,000	12,000	17,100	22,000
Cooling Capacity (Min – Max)	BTU/h	4,400-10,200	4,400-13,000	5,100-18,000	5,100-23,000
Heating Capacity (Rated)*	BTU/h	9,000	12,000	18,000	22,000
Heating Capacity (Min – Max)*	BTU/h	4,400-10,000	4,400-14,000	5,100-19,100	5,100-25,400
SEER		15	15	15	15
EER (AC/ HP)		10.4	10.5	11.0/ 12.2	9.2
COP		3.9	3.9	3.8	3.6
HSPF*		8.2	8.2	8.2	8.2
ELECTRICAL DATA					
Power Supply	V/Ph/Hz	208-230 / 1 / 60	208-230 / 1 / 60	208-230 / 1 / 60	208-230 / 1 / 60
Minimum Circuit Amps	A	7.9 Cool / 10.1 Heat	8.6 Cool / 10.1 Heat	9.5 Cool / 13.3 Heat	18.3
Maximum Overcurrent Protection	A	15	15	20	20
Power Consumption - Cooling	kW	0.9	1.1	1.4	2.4
Power Consumption - Heating*	kW	0.7	0.9	1.4	1.8

INDOOR WALL-MOUNTED UNITS						
Indoor Model Name		Cooling Only Heat Pump	FTKN09NMVJU FTXN09NMVJU	FTKN12NMVJU FTXN12NMVJU	FTKN18NMVJU FTXN18NMVJU	FTKN24NMVJU FTXN24NMVJU
Moisture Removal		Q/hr	1.3	1.8	4.1	4.8
Airflow-Wet (H/M/L/SL)		CFM	11.4/ 8.1/ 6.2/ 4.1	12/ 8.5/ 7.0/ 4.0	20.2/ 16.4/ 12.9/ 11.8	20.2/ 16.4/ 13.9/ 11.8
Airflow-Dry (H/M/L/SL)*		CFM	11.5/ 9.0/ 7.0/ 6.1	11.7/ 9.1/ 7.0/ 6.0	18.7/ 16.1/ 13.3/ 11.9	21.1/ 17.1/ 13.3/ 11.9
Sound Pressure - Cooling (H/M/L/SL)		dB(A)	43/ 35/ 27/ 19	44/ 36/ 30/ 19	48/ 44/ 38/ 33	51/ 45/ 39/ 34
Sound Pressure - Heating (H/M/L/SL)*		dB(A)	43/ 35/ 28/ 25	44/ 36/ 29/ 26	48/ 42/ 37/ 33	41/ 43/ 37/ 34
Piping Connections	Liquid (O.D.)	in.	∅ ¾	∅ ¾	∅ ¾	∅ ¾
	Gas (O.D.)	in.	∅ ¾	∅ ¾	∅ ½	∅ ¾
	Condensate Drain	in.	∅ ¾	∅ ¾	∅ 1/16	∅ 1/16
Dimensions (H x W x D)		in.	11¼ x 30¾ x 8¼		11¼ x 39 x 10¾	
Net Weight		lbs.	18	18	26	26

OUTDOOR UNITS					
Model Name	Cooling Only Heat Pump	RKN09NMVJU RXN09NMVJU	RKN12NMVJU RXN12NMVJU	RKN18NMVJU RXN18NMVJU	RKN24NMVJU RXN24NMVJU
Sound Pressure Level - Cooling/Heating*	dB(A)	46/ 48	49/ 49	54/ 54	55/ 55
Operating Range - Cooling	°F DB	50 - 115	50 - 115	50 - 115	50 - 115
Operating Range - Heating*	°F DB	5 - 75	5 - 75	5 - 75	5 - 75
Max. Piping Length	ft.	49	49	98.4	98.4
Max. Piping Height	ft.	39	39	65.6	65.6
Dimensions (H x W x D)	in.	21¼ x 26½ x 11¼		29 x 34¼ x 12¾	
Net Weight	lbs.	53	53	97	97

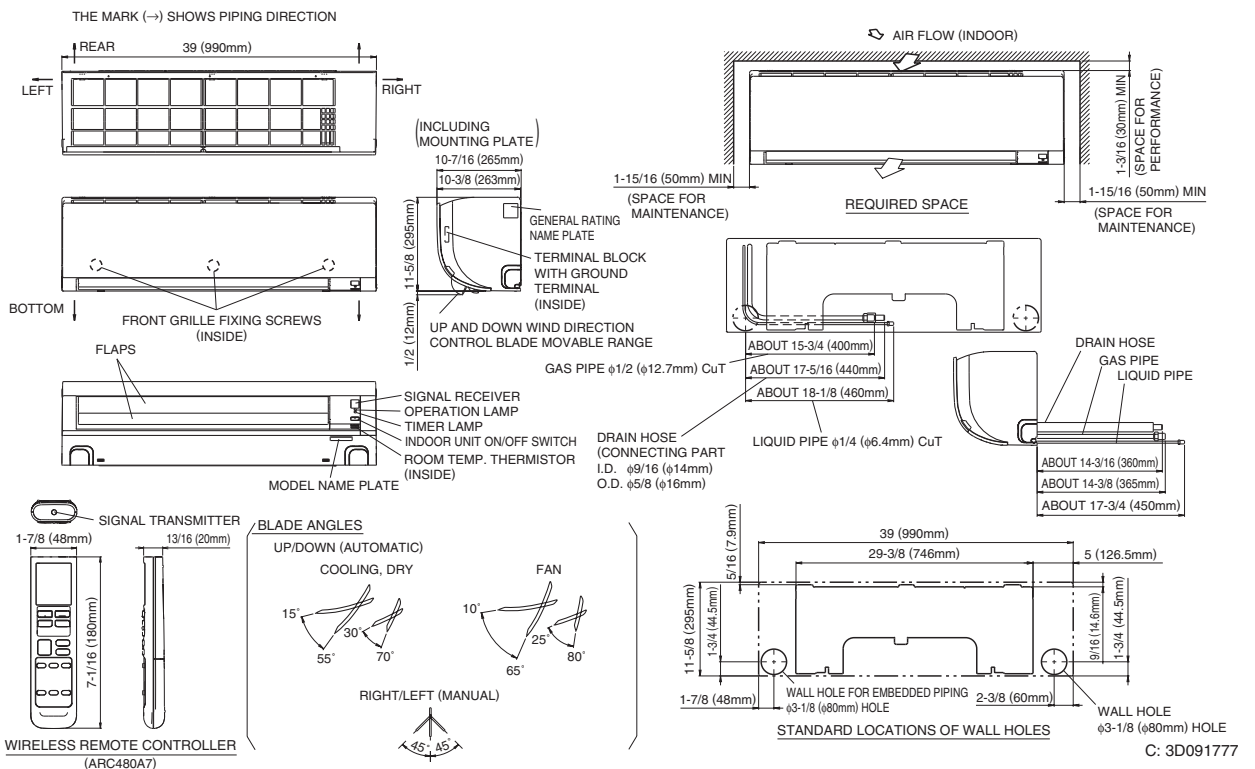
*Applicable to heat pump models only

FTKN09/12NMVJU



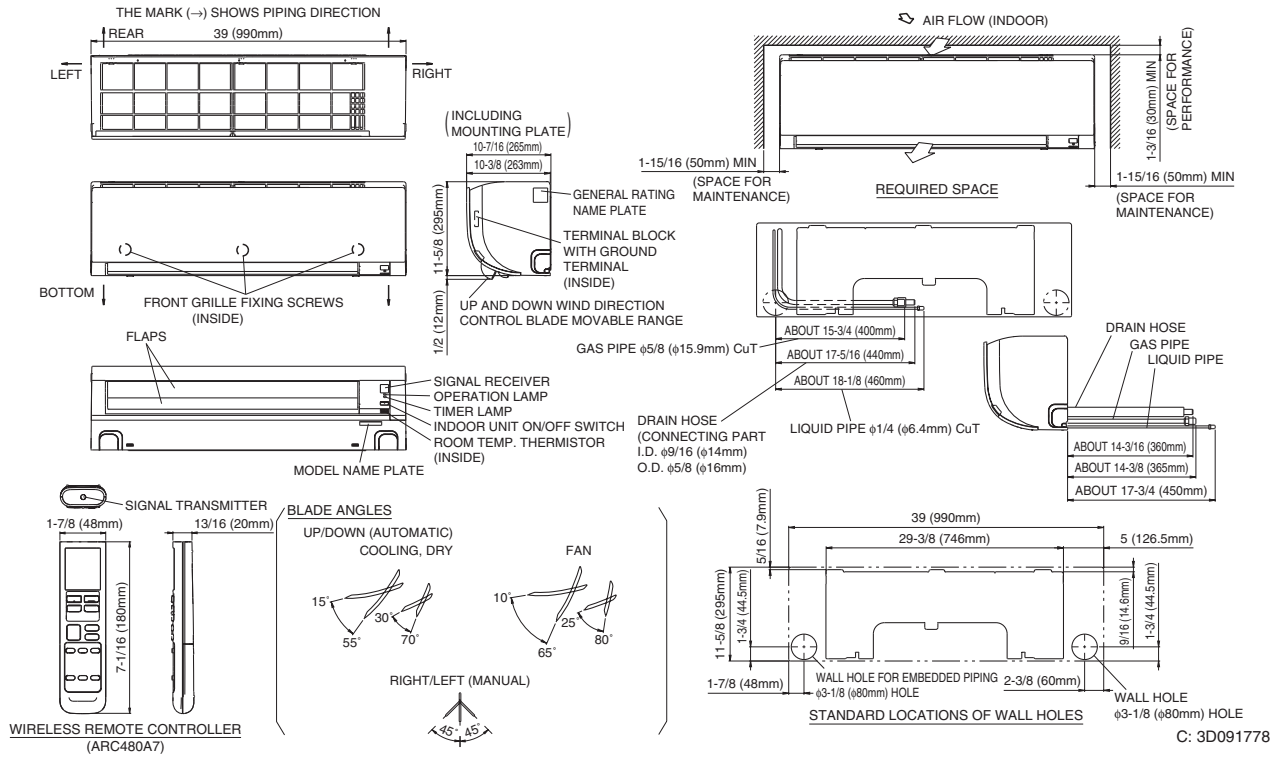
C: 3D091703

FTKN18NMVJU

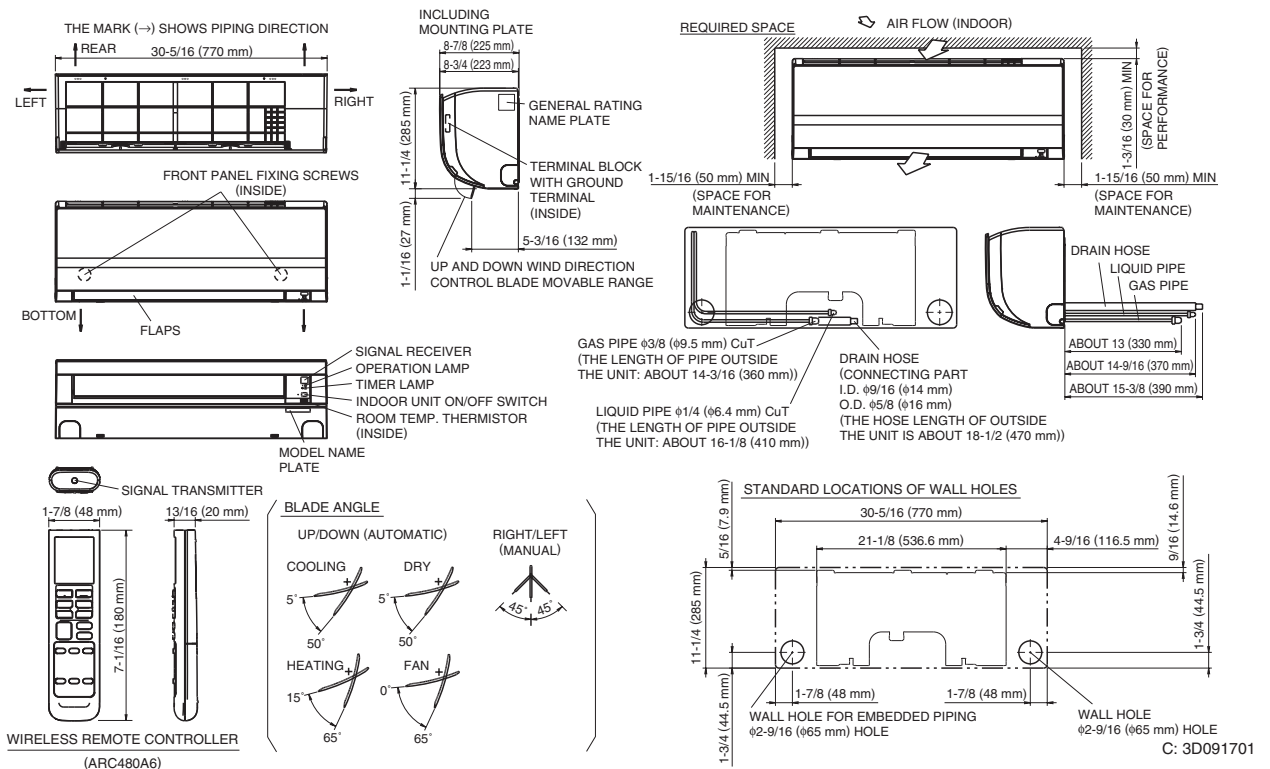


C: 3D091777

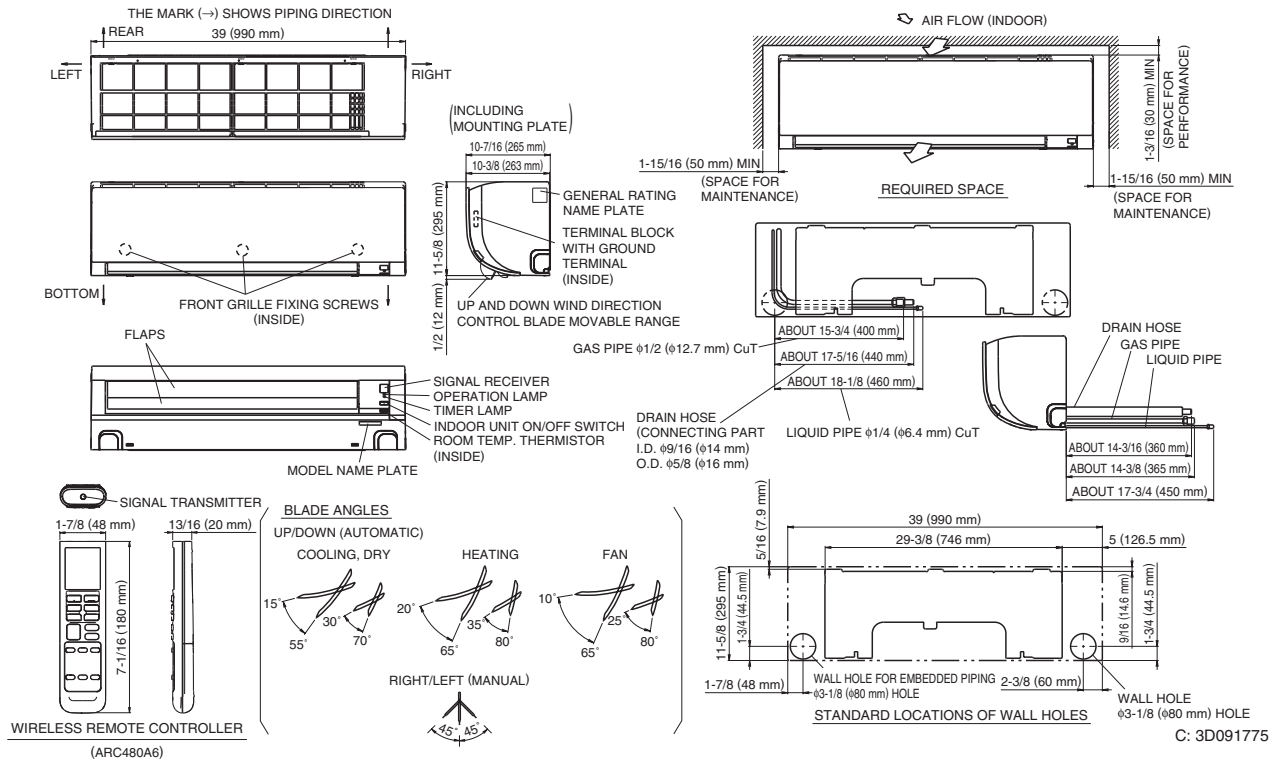
FTKN24NMVJU



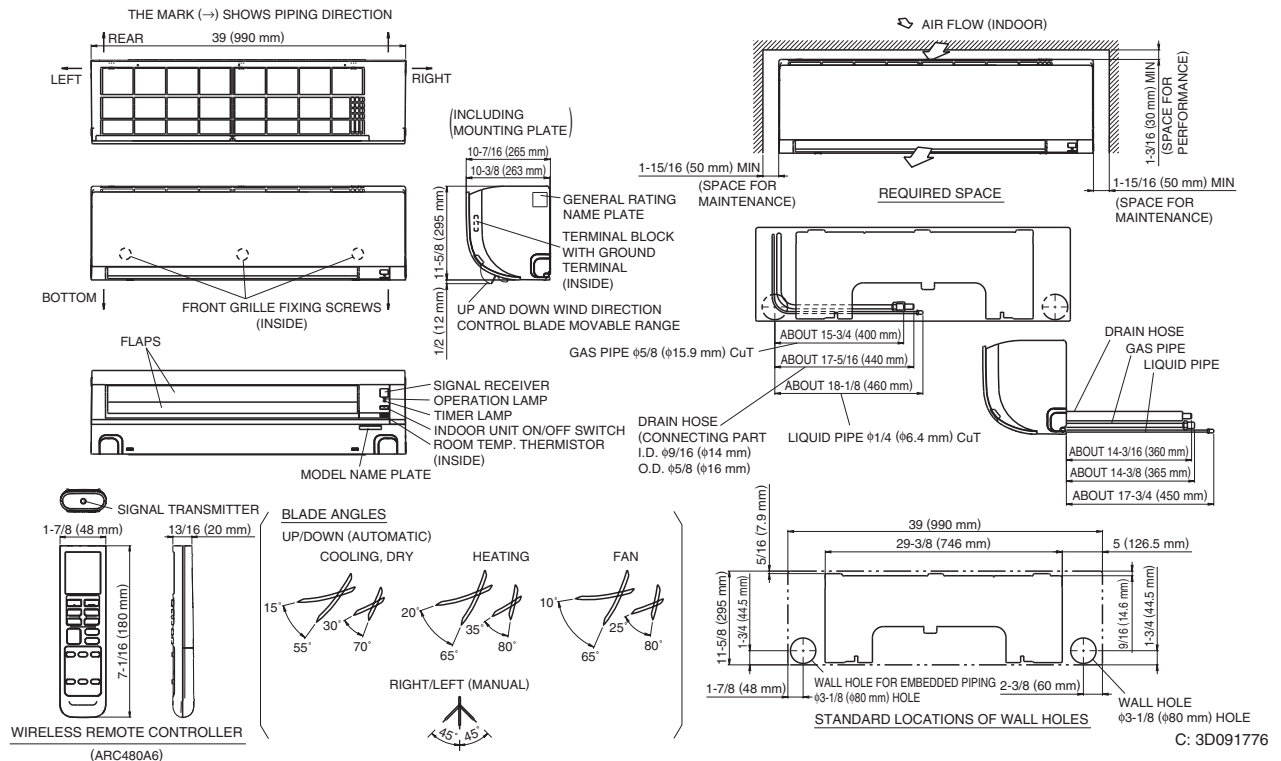
FTXN09/12NMVJU



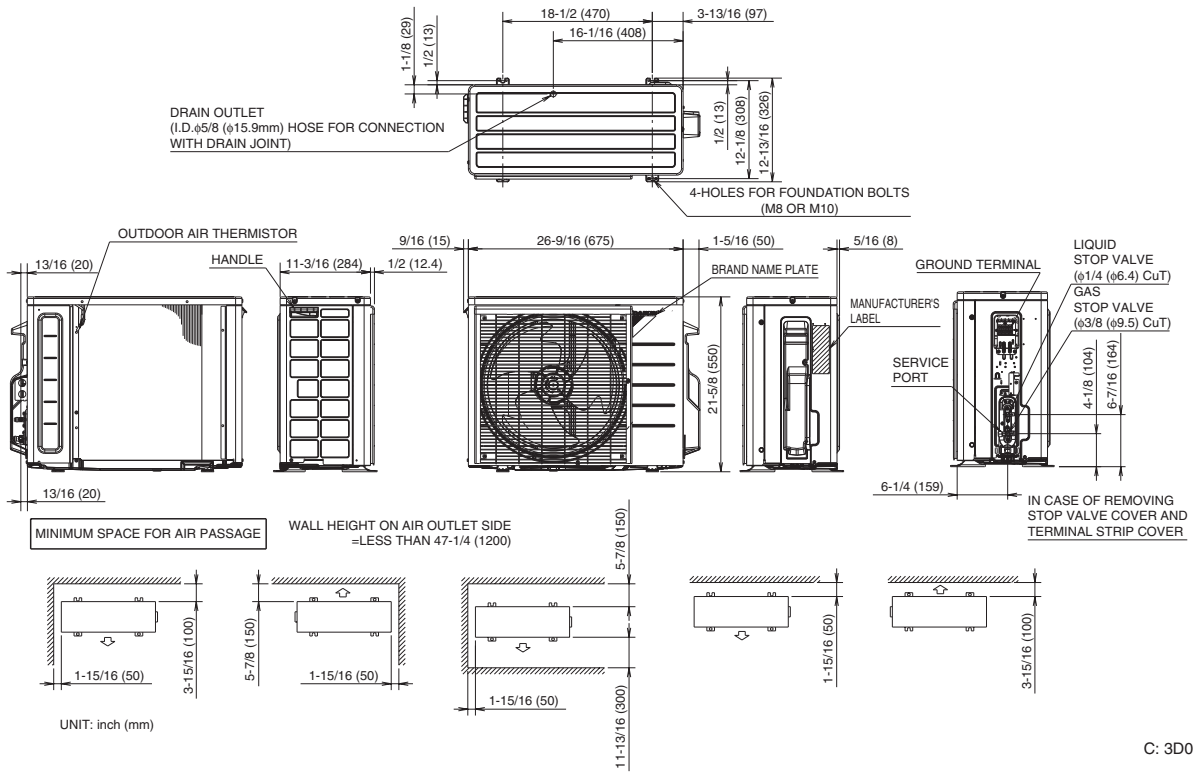
FTXN18NMVJU



FTXN24NMVJU

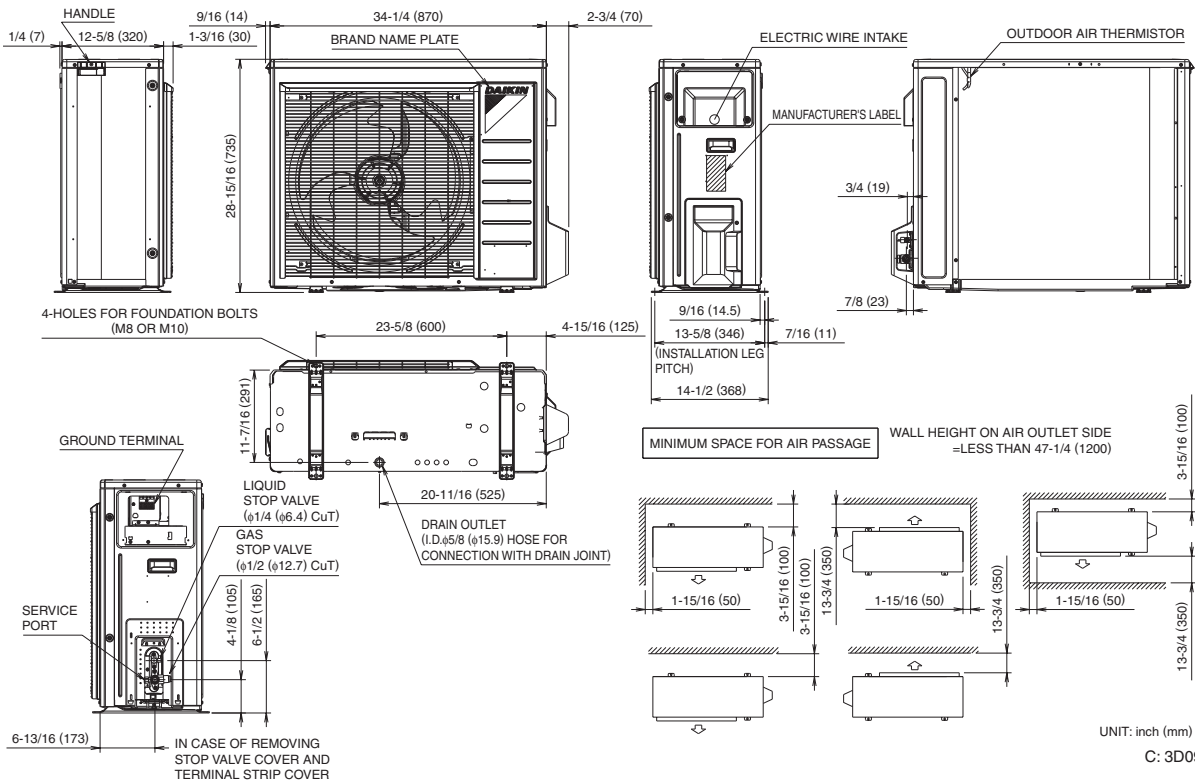


RKN09/12NMVJU, RXN09/12NMVJU



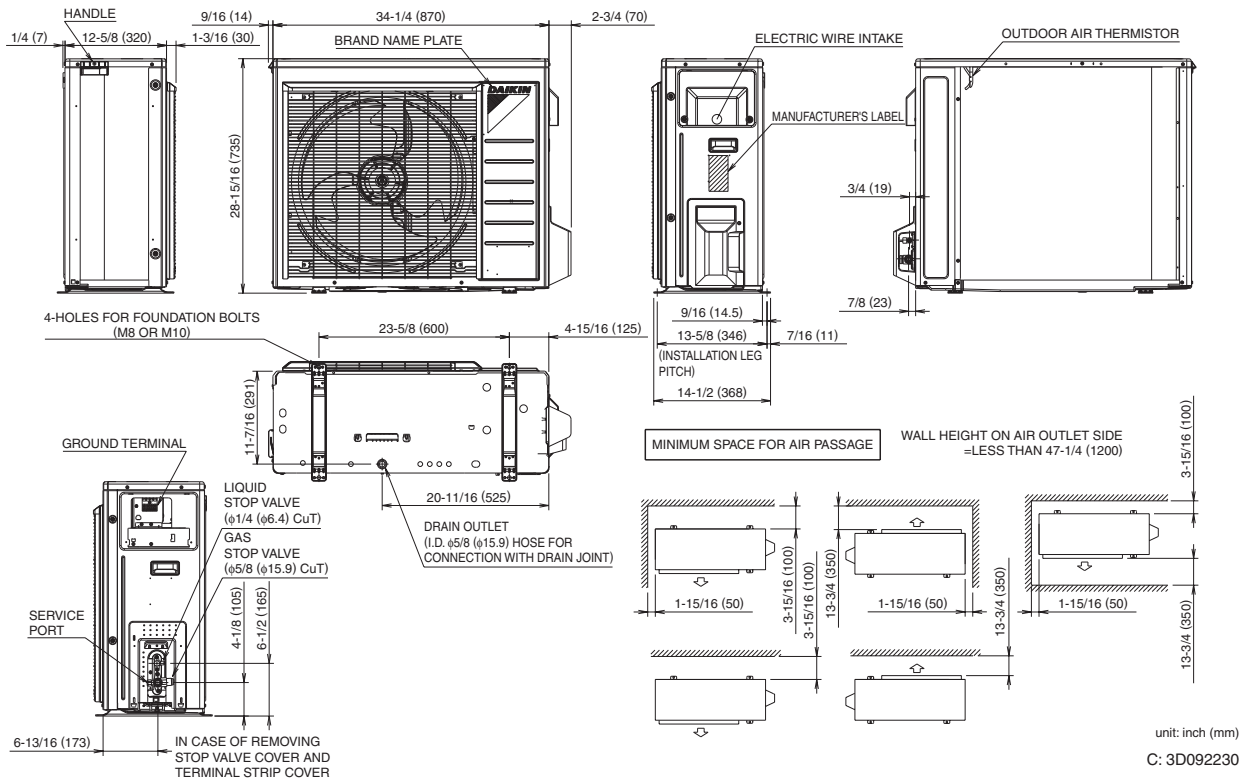
C: 3D092206

RKN18NMVJU, RXN18NMVJU

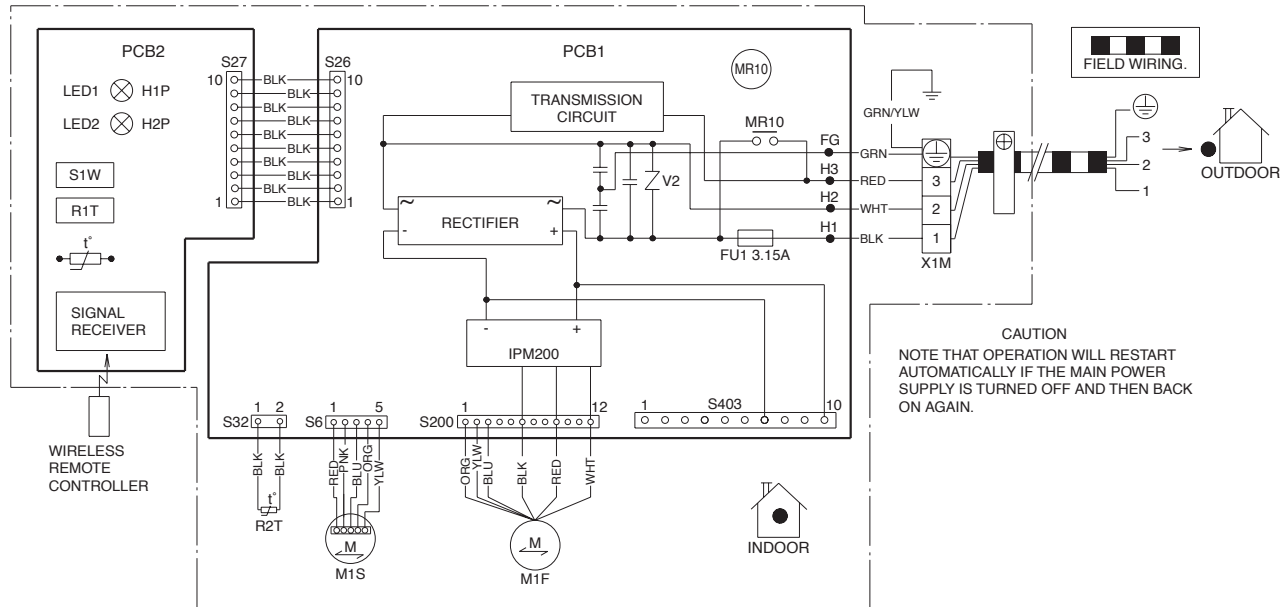


C: 3D092224

RKN24NMVJU, RXN24NMVJU



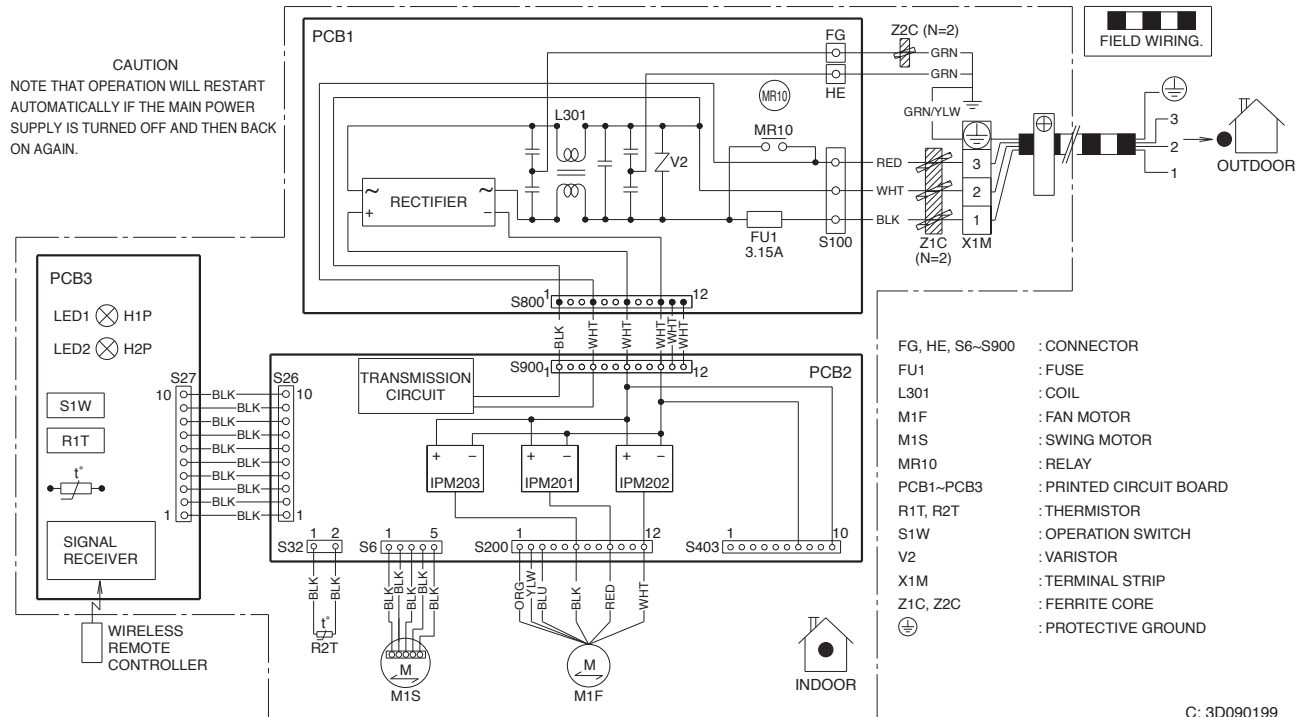
FTKN09/12NMVJU, FTXN09/12NMVJU



- | | | | | | | | |
|-------|----------------|------------|-------------------------|------|--------------------|---|---------------------|
| FG | : FRAME GROUND | M1S | : SWING MOTOR | S1W | : OPERATION SWITCH | ⊕ | : PROTECTIVE GROUND |
| FU1 | : FUSE | PCB1, PCB2 | : PRINTED CIRCUIT BOARD | X1M | : TERMINAL STRIP | | |
| H1~H3 | : HARNESS | R1T, R2T | : THERMISTOR | V2 | : VARISTOR | | |
| M1F | : FAN MOTOR | S6~S403 | : CONNECTOR | MR10 | : RELAY | | |

C: 3D086429B

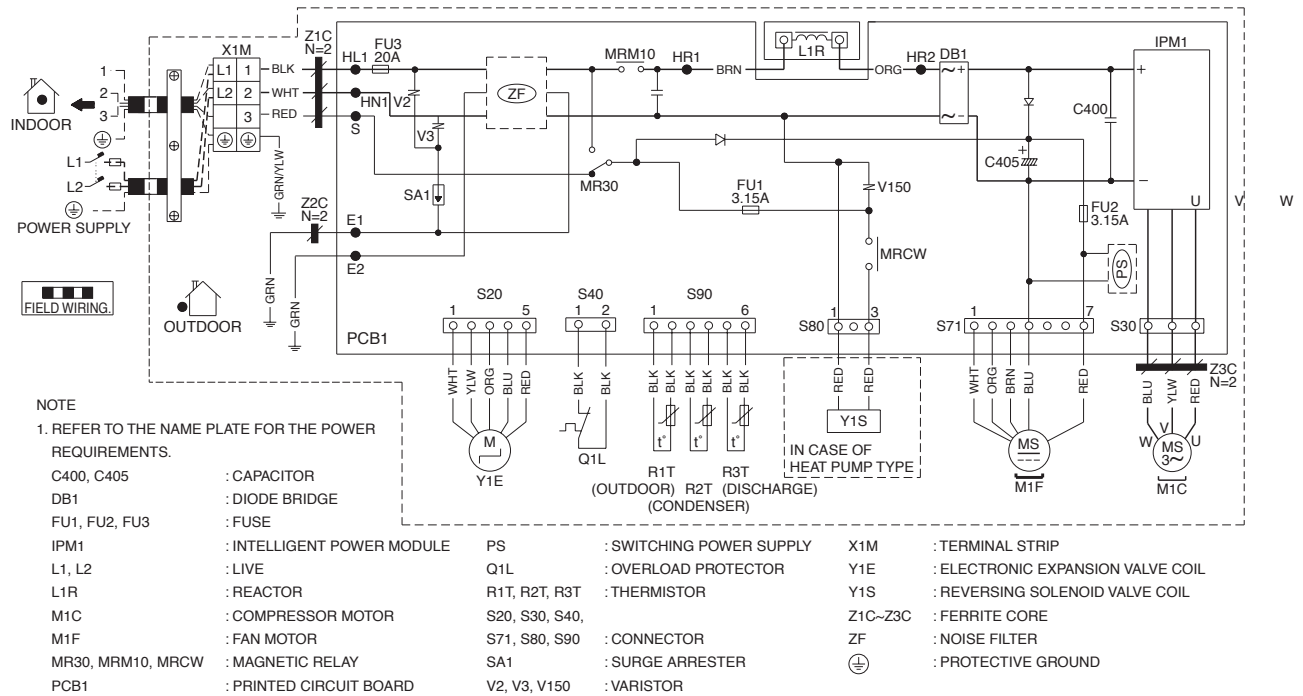
FTKN18/24NMVJU, FTXN18/24NMVJU



- | | |
|-----------------|-------------------------|
| FG, HE, S6~S900 | : CONNECTOR |
| FU1 | : FUSE |
| L301 | : COIL |
| M1F | : FAN MOTOR |
| M1S | : SWING MOTOR |
| MR10 | : RELAY |
| PCB1~PCB3 | : PRINTED CIRCUIT BOARD |
| R1T, R2T | : THERMISTOR |
| S1W | : OPERATION SWITCH |
| V2 | : VARISTOR |
| X1M | : TERMINAL STRIP |
| Z1C, Z2C | : FERRITE CORE |
| ⊕ | : PROTECTIVE GROUND |

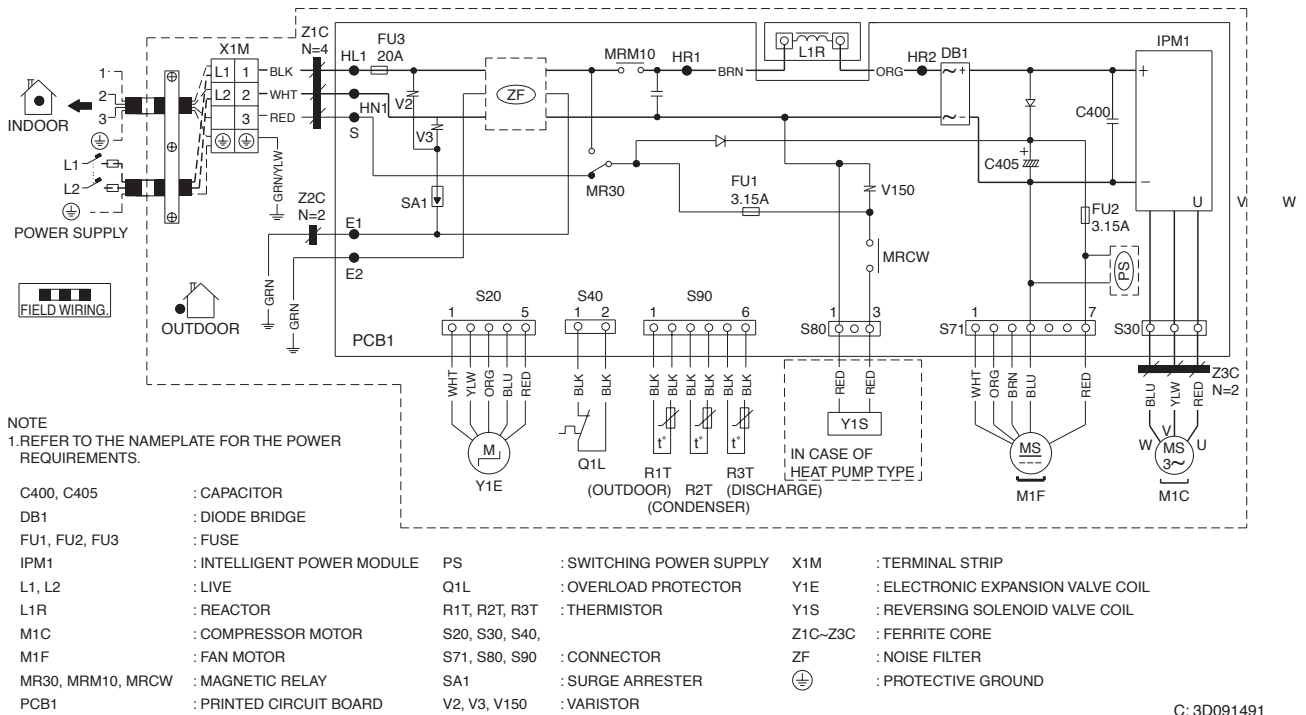
C: 3D090199

RKN09/12NMVJU, RXN09/12NMVJU



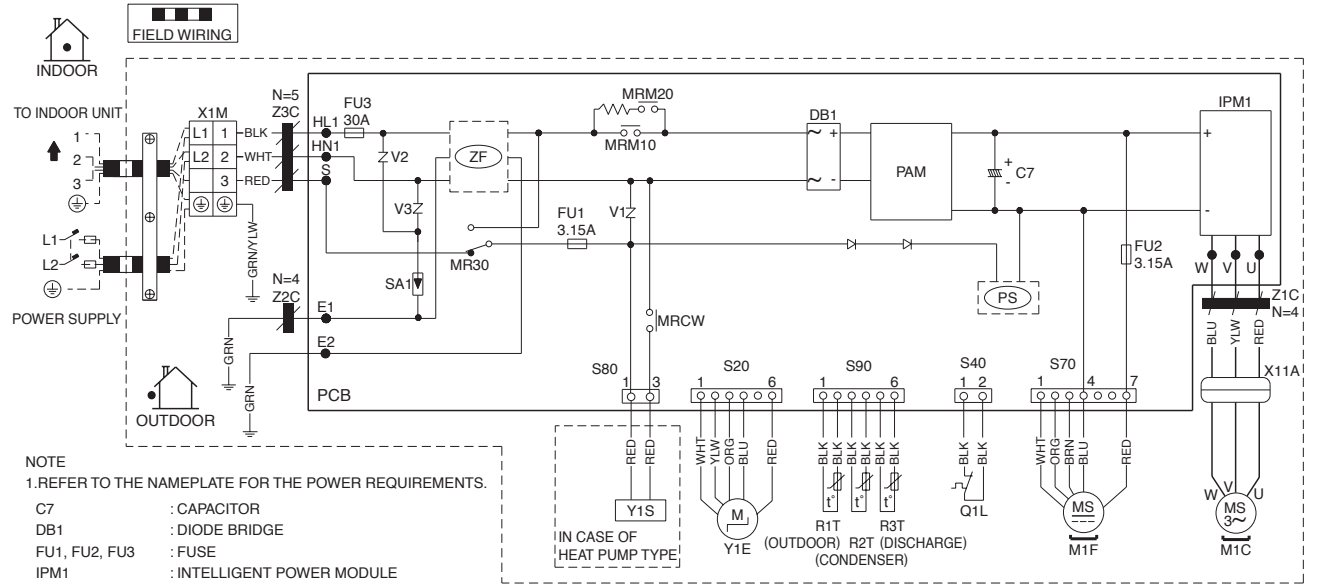
C: 3D089069

RKN18NMVJU



C: 3D091491

RKN24NMVJU, RXN18/24NMVJU



NOTE

1. REFER TO THE NAMEPLATE FOR THE POWER REQUIREMENTS.

- | | | | | | | | |
|---------------|------------------------------|----------------|--------------------------|---------------|-----------------------------------|---|---------------------|
| C7 | : CAPACITOR | PS | : SWITCHING POWER SUPPLY | V1, V2, V3 | : VARISTOR | ⊕ | : PROTECTIVE GROUND |
| DB1 | : DIODE BRIDGE | Q1L | : OVERLOAD PROTECTOR | X1M | : TERMINAL BLOCK | ⬇ | : GROUND |
| FU1, FU2, FU3 | : FUSE | R1T, R2T, R3T | : THERMISTOR | Y1E | : ELECTRONIC EXPANSION VALVE COIL | | |
| IPM1 | : INTELLIGENT POWER MODULE | S20, S40, S70, | | Y1S | : REVERSING SOLENOID VALVE COIL | | |
| L1, L2 | : LIVE | S80, S90, X11A | : CONNECTOR | Z1C, Z2C, Z3C | : FERRITE CORE | | |
| M1C | : COMPRESSOR MOTOR | SA1 | : SURGE ABSORBER | ZF | : NOISE FILTER | | |
| M1F | : FAN MOTOR | | | | | | |
| MRM10, MRM20, | | | | | | | |
| MR30, MRCW | : MAGNETIC RELAY | | | | | | |
| PAM | : PULSE AMPLITUDE MODULATION | | | | | | |
| PCB | : PRINTED CIRCUIT BOARD | | | | | | |

C: 3D089070

	ACCESSORY DESCRIPTION	PART NUMBERS	
		UNIT SIZES: 9 & 12	UNIT SIZES: 18 & 24
INDOOR UNIT	Wired remote controller & adaptor	BRC944B2 + KRP067A41	BRC944B2 + KRP980B2
	Cord for remote controller (3m)	BRCW901A03	BRCW901A03
	Cord for remote controller (8m)	BRCW901A08	BRCW901A08
	Five-room centralized controller	KRC72	KRC72
	Adopter PCB (normal open/normal open pulse contact)	KRP413AB1S + KRP067A41	KRP413AB1S + KRP980B2
	Titanium apatite photocatalytic air-purifying filter**	KAF970A46	KAF970A45 or KAF970A46**
	Remote controller loss prevention with chain	KKF936A4	KKF936A4
	Interface adaptor for DIII-NET use	KRP928BB2S + KRP067A41	KRP928BB2S + KRP980B2
	Central remote controller	DCS302C71	DCS302C71
	Unified ON/OFF controller	DCS301C71	DCS301C71
	Schedule timer	DST301BA61	DST301BA61
	Standard remote controller for AC units	ARC480A7	ARC480A7
	Standard remote controller for HP units	ARC480A6	ARC480A6
	ENVi - WiFi enabled controller	DACA-TS1-1 + KRP067A41	DACA-TS1-1 + KRP980B2
OUTDOOR UNIT	Air direction adjustment grille	KPW937E4	KPW063A4
	Drain plug*	KKP937A4	KKP937A4
	Back protection wire net	KKG067A41	KKG063A42
	Side protection wire net	N/A	KKG063A43

* Standard accessory (Drain plug is only for Heat Pump models)

** KAF970A46 filter without frame, KAF970A45 filter with frame