

Job Name/Location:

Tag #:

Date:

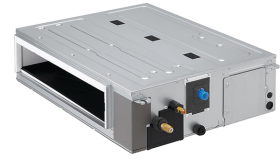
For:	File	Resubmit
	Approval	Other_____

PO No.:

Architect: _____ GC: _____

Engr: _____ Mech: _____

Rep: _____
(Company) (Project Manager)



LH188HV1

Single Zone Mid Static Ducted

Outdoor Unit (ODU) - LUU180HV, Indoor Unit (IDU) - LHN188HV1

Performance:

Cooling:

Cooling (Min~Rated~Max, Btu/h)	7,400 ~ 18,000 ~ 21,100
SEER2	17.80
EER2	12.60

SEER - Seasonal Energy Efficiency Ratio EER - Energy Efficiency Ratio

Heating:

Heating (Min~Rated~Max, Btu/h)	6,800 ~ 20,000 ~ 21,800
HSPF2	9.90

HSPF - Heating Seasonal Performance Factor

Cooling Nominal Test Conditions:

Indoor: 80°F DB / 67°F WB
Outdoor: 95°F DB / 75°F WB

Heating Nominal Test Conditions:

Indoor: 70°F DB / 60°F WB
Outdoor: 47°F DB / 43°F WB

Electrical:

Power Supply ¹ (V/Hz/Ø)	208-230/60/1
------------------------------------	--------------

Outdoor Unit:

MOP (A)	30
MCA (A)	20
Cooling Rated Amps (A)	16.8
Heating Rated Amps (A)	16.8
Compressor(A)	13.5
Fan Motor (IDU + ODU) (A)	1.7 + 1.6
Cooling Power Input (kW)	0.55 ~ 1.43 ~ 2.00
Heating Power Input (kW)	0.52 ~ 1.62 ~ 2.10

MOP - Maximum Overcurrent Protection

MCA - Minimum Circuit Ampacity

Piping:

Installed Liquid Pipe (in., O.D.)	3/8
Installed Vapor Pipe (in., O.D.)	5/8
IDU Liquid Connection (in., O.D.)	1/4
IDU Vapor Connection (in., O.D.)	1/2
Additional Refrigerant (oz./ft.)	0.43
Max. Pipe Length ² (ft.)	164
Piping Length (no add'l refrig., ft.)	24.9
Max. Elevation (ft.)	98.4

Features:

- ESP control
- Hot start
- Internal Condensate Pump
- Inverter (variable speed fan)
- Auto restart
- Control lock
- Group control
- Timer (on/off)
- Sleep Mode
- Optional Wi-Fi Control
- Aux Heater relay kit

Optional Accessories:

- MultiSITE™ CRC2 - PREMTBVC2
- MultiSITE™ CRC2+ - PREMTBVC3
- MultiSITE™ CRC2+Z - PREMTBVC4
- Simple Controller - PREMTCC00U
- Wi-Fi module with cable - PWFMD200
- MultiSITE™ Comm. Mgr. - PBACBTR0A
- AC Smart 5 - PACS5A000
- ACP5 - PACP5A000
- PI-485 - PMNFP14A1
- Dynamic V8 2VL Low Profile Air Cleaner - ZPLMV201A
- Dry Contact (Simple)- PDRYCB300
- Dry Contact (3rd Party) - PDRYCB300
- Dry Contact (Setback)- PDRYCB400
- Vertical Installation Conversion Kit - ABDAMA0
- High Efficiency Filter Box - ZFBXMA01A
- Low Ambient Wind Baffle (Cooling operation to -4°F) ZLABGP04A
- Drain Pan Heater - PQSH1200

For a complete list of available accessories, contact your distributor. For continual product development, LG reserves the right to change specifications without notice. © LG Electronics U.S.A., Inc., Englewood Cliffs, NJ. All rights reserved. "LG Life's Good" is a registered trademark of LG Corp. /www.lghvac.com

Operating Range:

Outdoor Unit:

Cooling (°F DB)	5 to 118
Heating (°F WB)	-4 to 64

Indoor Unit:

Cooling (°F WB)	57 to 77
Heating (°F DB)	59 to 81

System Data:

Refrigerant Type	R410A
Refrigerant Control	EEV
Refrigerant Charge (lbs.)	4.41
ODU Sound Pressure Max (Cool / Heat) ±3 dB(A) ³	48 / 52
IDU Sound Pressure (H/M/L) ±3 dB(A) ³	36 / 32 / 29
ODU Net / Shipping Weight (lbs.)	130.1 / 147.7
IDU Net / Shipping Weight (lbs.)	61.5 / 71.7
Heat Exchanger Coating	GoldFin™

Fan:

ODU Type	Propeller
IDU Type	Sirocco
Fan Speeds (Fan/Cool/Heat)	3 / 3 / 3
Fan Quantity (ODU + IDU)	1
Motor/Drive	Brushless Digitally Controlled/Direct
ODU Air Circulation (CFM)	2,048
IDU Air Circulation (H/M/L) (CFM)	635.7 / 529.7 / 423.8
Default ESP (in wg)	0.24
Minimum ESP/Fan Setting Value ⁴	0.1 / 82
Maximum ESP/Fan Setting Value ⁴	0.59 / 156
Dehumidification Rate (pts/hr)	2.75

Notes:

1. Acceptable operating voltage: 187V-253V.
2. Piping lengths are equivalent.
3. Sound Pressure levels are tested in an anechoic chamber under ISO Standard 3745.
4. Maximum static pressure may result in reduced airflow (CFM).
5. All communication / connection (power) cable from the outdoor unit to the indoor unit is field supplied and is to be minimum four-conductor, 14 AWG, stranded, shielded or unshielded (if shielded, it must be grounded to the chassis of the outdoor unit only), and must comply with applicable local and national codes.
6. See Engineering Manual for sensible and latent capacities.
7. Power wiring cable size must comply with the applicable local and national code.
8. The indoor unit comes with a dry helium charge.
9. This data is rated 0 ft. above sea level, with 24.6 ft. of refrigerant line and a 0 ft. level difference between outdoor and indoor units.
10. Must follow installation instructions in the applicable LG installation manual.
11. If the optional low ambient wind baffle is used, one wind baffle is required for each ODU fan.



Proper sizing and installation of equipment is critical to achieve optimal performance. Split system air conditioners and heat pumps (excluding ductless systems) must be matched with appropriate coil components to meet ENERGY STAR® criteria. Ask your contractor for details or visit www.energystar.gov. (ENERGY STAR and the ENERGY STAR mark are registered trademarks owned by the U.S. Environmental Protection Agency.)

SB_SZ_Mid_Static_Ducted_LH188HV1_2023_09_26_105335

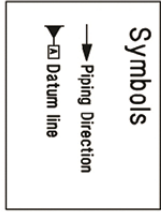
LH188HV1
 Single Zone Mid Static Ducted
 Outdoor Unit (ODU) - LUU180HV, Indoor Unit (IDU) - LHN188HV1



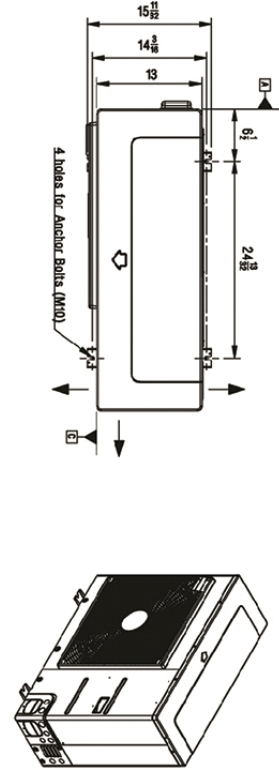
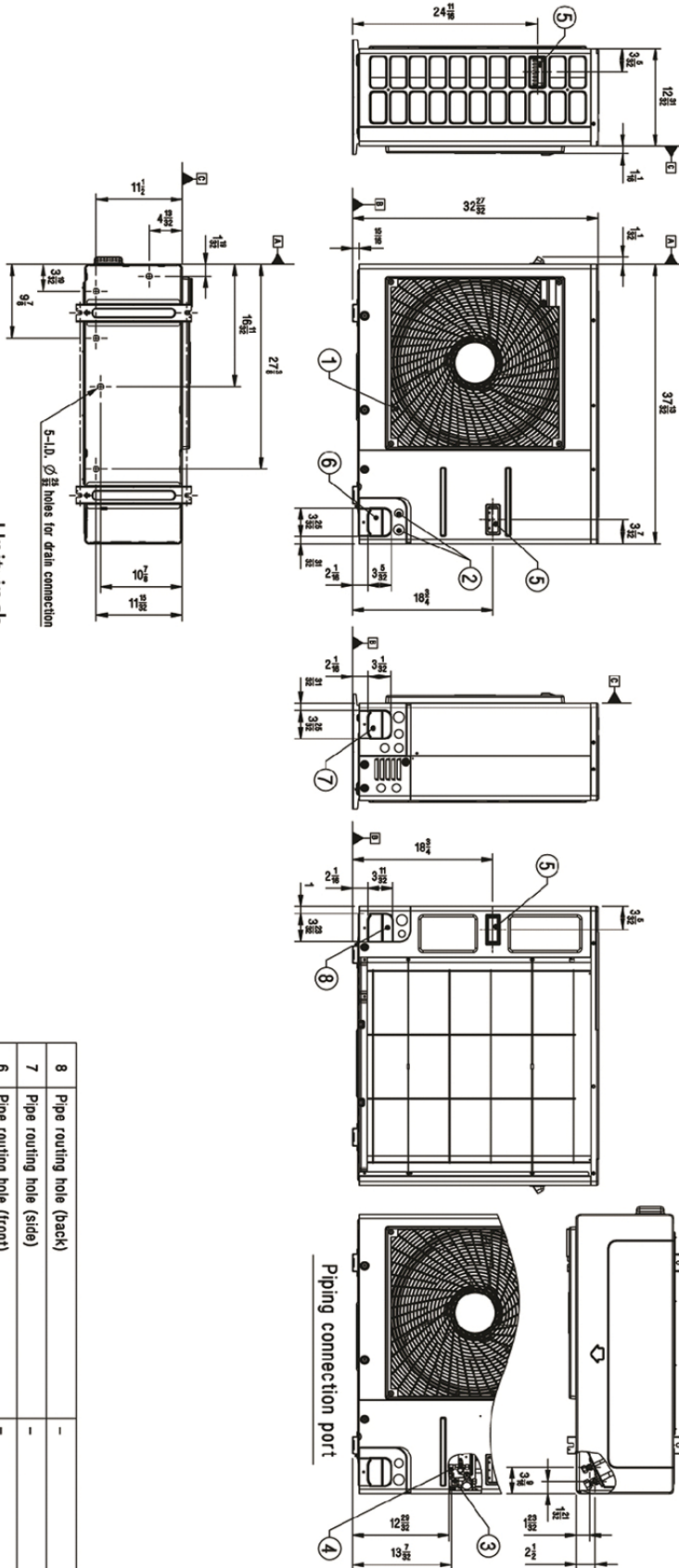
Tag No.: _____

Date: _____

PO No.: _____



Unit: inch



No.	Part Name	Description
8	Pipe routing hole (back)	-
7	Pipe routing hole (side)	-
6	Pipe routing hole (front)	-
5	Handle	-
4	Liquid Pipe Connection	Flare joint
3	Gas Pipe Connection	Flare joint
2	Power and communication cable Hole	-
1	Air Outlet	-

Job Name/Location: _____

LH188HV1

Single Zone Mid Static Ducted

Outdoor Unit (ODU) - LUU180HV, Indoor Unit (IDU) - LHN188HV1



Tag No.: _____

Date: _____

PO No.: _____

