



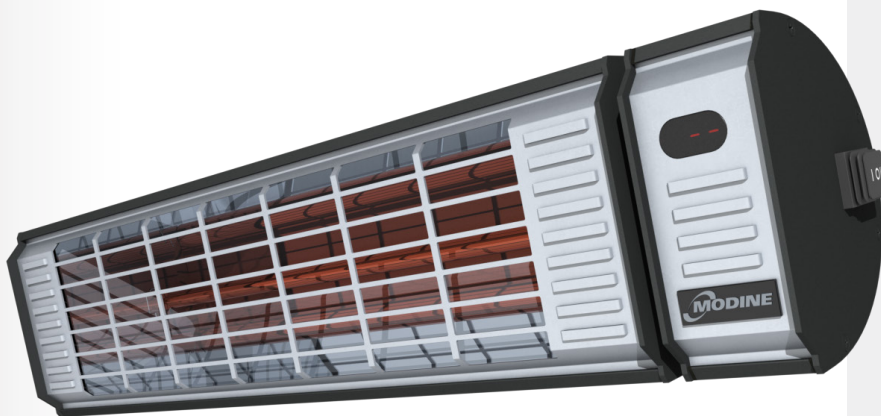
MEQ INFRARED HEATER

The perfect balance between heating performance and low-light output

Extend your patio season with the MEQ. This heater features a high-performance Tungsten element with advanced light filtering coating to take the edge off on cool evenings. With a powder-coated extruded Aluminum body, on board controls and power outputs up to 4800w, the MEQ is the perfect solution for restaurants, vestibules, rooftops, or backyard patios.

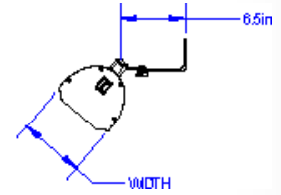
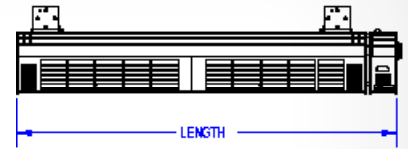
Key Features

- High-intensity, low light Tungsten bulb that supplies instantaneous, directional heat for indoor and outdoor applications
- Evenly distributed heat that is practically unaffected by windy environments
- Electrically efficient radiant heat reduces wasted energy by warming people and objects and not the air between them
- IP65 rated powder coated extruded aluminum body resists corrosion and deformation over time
- Built-in controls with remote to control the 6 levels of heat
- Completely silent operation



MEQ MODELS

Model	Watts	Volts	Amps	BTUs	Dimensions	
					Length (in)	Width (in)
MEQ15A01	1500	120	12.5	5115	27.6	6.6
MEQ30A12	2250/3000	208/240	10.8/12.5	7,673/10,230	39.6	6.6
MEQ48A12	3605/4800	208/240	17.3/20	12,293/16,368	46.3	6.6



*240V heaters may be used at 208V. De-rating heaters reduces heater output by approximately 25%.

Heating Coverage Patterns

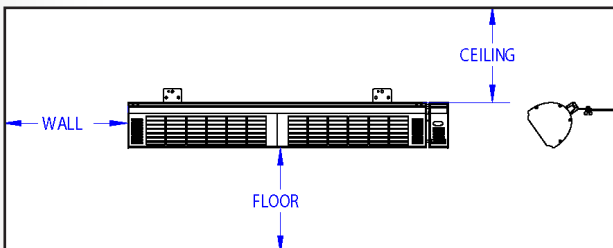
Model	Width	Depth	Height
MEQ15A01	7' (2.1m)	6' (1.8m)	6'7" (2.0m)
MEQ30A12	9' (2.7m)	8' (2.4m)	8' (2.4m)
MEQ48A12	11' (3.4m)	9' (2.8m)	9' (2.8m)

Heater coverage area may be reduced in highly exposed areas. Contact dealer for specifying support.

Clearances and Mounting Options

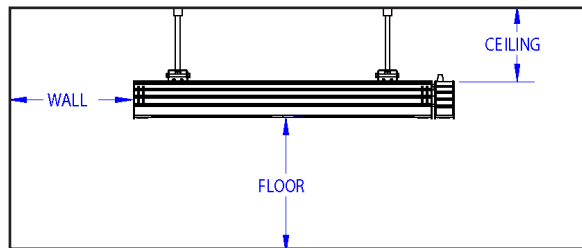
ModelNumber	Floor	Ceiling (Wall Mount)	Ceiling (Ceiling Mount)	End	Side	Mounting Option
MEQ15A01	6'7" (2.0m)	12" (305mm)	N/A	18" (457mm)	18" (457mm)	Wall
MEQ30A12	8' (2.4m)	12" (305mm)	12" (305mm)	18" (457mm)	18" (457mm)	Wall or Ceiling
MEQ48A12	8' (2.4m)	12" (305mm)	12" (305mm)	18" (457mm)	18" (457mm)	Wall or Ceiling

Wall Mounted Clearances



Always maintain 6' front clearance to combustibles, keep combustibles away from the sides and rear.

Ceiling Suspended Clearances

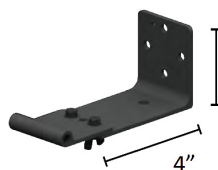


MEQ15A01 only available with wall mount

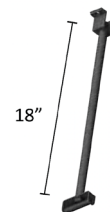
Included Parts



HANDHELD REMOTE



2" L-BRACKET x2
*x1 for MEQ15A01



CEILING SUSPENSION POLE x2
*not included in MEQ15A01