
ELECTRIC BOILERS

 **Made in USA**

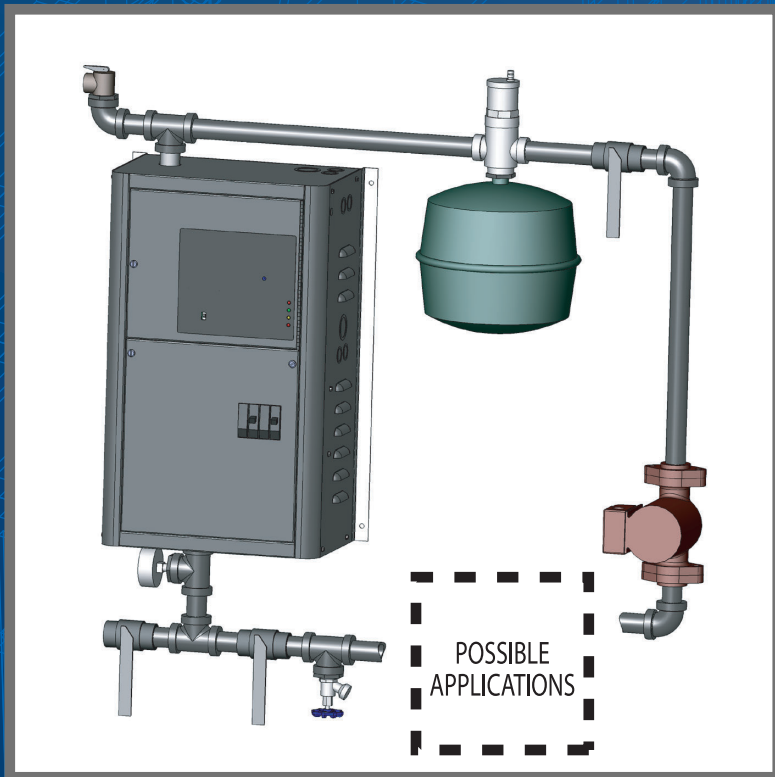


A complete product line to fit all your application needs

The Electro-Boiler™ has been heating America's homes and businesses since 1980. We take pride in our craftsmanship and we use only the best materials to ensure a high quality product. We are committed to you and we are confident that you will be completely satisfied with the Electro-Boiler.



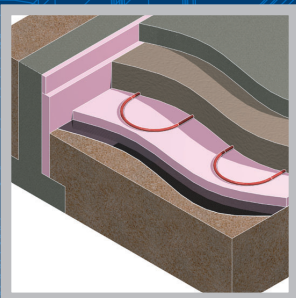
Electro-Boiler™ Applications



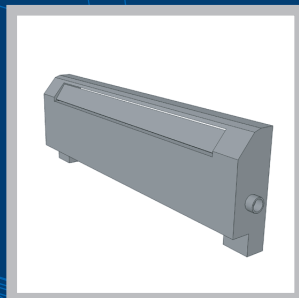
Electro Industries' Electro-Boiler products are packaged with features, advanced technology, and quality construction that are carefully made in the USA to ensure easy installation and exceptionally long service life.

This is backed by our 20-year vessel and element limited warranty* and our 2-year controls limited warranty.

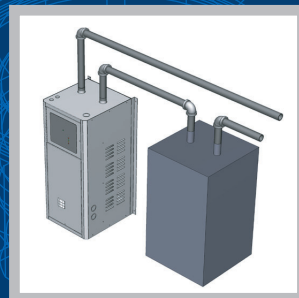
Our attention to quality doesn't stop at our boilers; we offer direct, live and local technical support with over 25 years of boiler manufacturing experience.



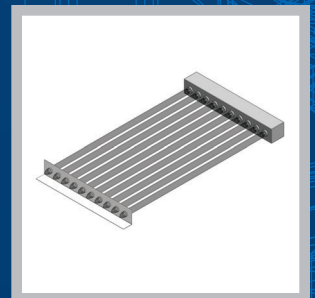
Radiant Heat Storage



Baseboard



Dual Boiler



Solar Assist

*Residential only, certain conditions apply. *Optional equipment not included with basic boiler. *Built in accordance to ASME Section IV.

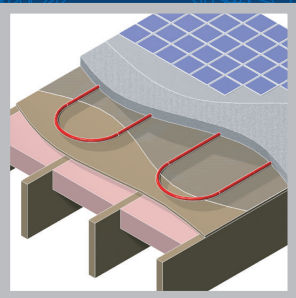
Achieve ultimate system control using our communicating Zone Controllers which enhance the staging of the Electro-Boiler:

- Zone valves or pumps
- Dual temperature
- Priority zone
- 40VA transformer
- Digital or standard thermostats

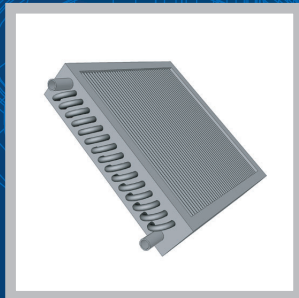


Together with these world-class features our boilers also include:

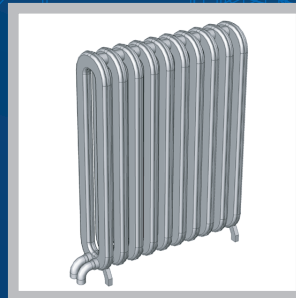
- Easy access controls for professional installations
- Internal circulator pump relay to simplify wiring
- Communicating zone controls[†] for the ultimate in complete system control
- Simple to use utility load control connections
- Front panel LED indicator lights for easy to read boiler status
- Quiet operation
- Temperature output sensing enabling the desired design temperature
- Easy setup controls to reduce installation time
- ASME H Stamp[†] and CSA approved to assure years of reliable service
- 30 psi pressure relief valve



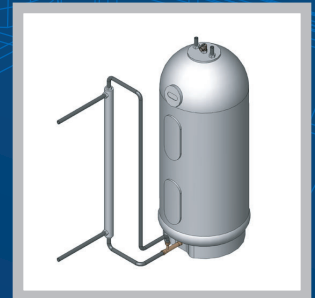
Radiant Floor



Water Coil



Radiator



Water-to-Water Heat Exchanger

Whether you are installing a simple, single zone system or a system with multiple boilers and zones we have the boiler and accessories to meet your needs. Contact your Electro Industries distributor today.



MINI-BOILER SERIES

Dimensions

- 11"W x 25"H x 9"D
- 3/4" NPT
- 53 lbs
- 0.95 gallon vessel

Specification Sheet

- BL306

Model	kW	Btu/h	Amps	Voltage	Phase	Breakers
EMB-* -1	1.1	3,700	10	120	1	N/A
EMB-* -2	2.5	8,500	21	120	1	N/A
EMB-* -4	5	17,000	42	120	1	N/A
EMB-* -5	4.5	15,300	19	240/208	1	30A
EMB-* -7	7	23,800	30	240/208	1	45A
EMB-* -9	9	30,700	38	240/208	1	60A

*S = Staging (max operating temp 160° F) H = Modulating (max operating temp 180° F)

Model	kW	Btu/h	Amps	Voltage	Phase	Breakers	Max Op Temp
EB-MS-10	10	34,100	42	240/208	1	60A	170° F
EB-MS-12	11.5	39,200	48	240/208	1	60A	170° F
EB-MS-15	15	51,100	63	240/208	1	60A, 30A	170° F
EB-MS-17	17.5	59,700	73	240/208	1	60A, 45A	170° F
EB-MS-20	20	68,200	84	240/208	1	60A, 60A	170° F
EB-MX-10	10	34,100	42	240/208	1	60A	180° F
EB-MX-12	11.5	39,200	48	240/208	1	60A	180° F
EB-MX-15	15	51,100	63	240/208	1	60A, 30A	180° F
EB-MX-17	17.5	59,700	73	240/208	1	60A, 45A	180° F
EB-MX-20	20	68,200	84	240/208	1	60A, 60A	180° F

TS MIDSIZE SERIES

Dimensions

- 17"W x 28"H x 10"D
- 1" NPT
- 75 lbs
- 2.20 gallon vessel

Specification Sheet

- BL509



TS STANDARD SERIES

Dimensions

- 17"W x 38"H x 17"D
- 1-1/4" NPT
- 150 lbs
- 6.55 gallon vessel

Specification Sheet

- BL506

Model	kW	Btu/h	Amps	Voltage	Phase	Breakers	Max Op Temp
EB-S-13	13.5	46,000	57	240/208	1	60A, 30A	170° F
EB-S-18	18	61,400	75	240/208	1	60A, 60A	170° F
EB-S-23	22.5	76,700	94	240/208	1	60A, 60A, 30A	170° F
EB-S-27	27	92,100	113	240/208	1	60A, 60A, 60A	170° F
EB-WX-13	13.5	46,000	57	240/208	1	60A, 30A	180° F
EB-WX-18	18	61,400	75	240/208	1	60A, 60A	180° F
EB-WX-23	22.5	76,700	94	240/208	1	60A, 60A, 30A	180° F
EB-WX-27	27	92,100	113	240/208	1	60A, 60A, 60A	180° F
EB-WX-13-2	13.5	46,000	38	208	3	50A	180° F
EB-WX-27-2	27	92,100	75	208	3	100A	180° F

Model	kW	Btu/h	Amps	Voltage	Phase	Breakers	Max Op Temp
EB-CX-18-48	18	61,400	22	480	3	30A	180° F
EB-CX-24-48	24	81,800	29	480	3	40A	180° F
EB-CX-30-48	30	102,300	37	480	3	50A	180° F
EB-CX-36-48	36	122,800	44	480	3	60A	180° F
EB-CX-42-48	42	143,300	51	480	3	70A	180° F
EB-CX-48-48	48	163,700	58	480	3	80A	180° F
EB-CX-54-48	54*	184,200	65	480	3	80A	180° F
EB-CX-27-20	27	92,100	75	208	3	100A	180° F
EB-CX-31-20	31.5	107,400	88	208	3	110A	180° F
EB-CX-36-20	36	122,800	100	208	3	125A	180° F
EB-CX-40-20	40.5	138,100	113	208	3	150A	180° F
EB-CX-27-24	27	92,100	65	240	3	80A	180° F
EB-CX-31-24	31.5	107,400	76	240	3	100A	180° F
EB-CX-36-24	36	122,800	87	240	3	110A	180° F
EB-CX-40-24	40.5	138,100	98	240	3	125A	180° F
EB-CX-31	31.5	107,400	132	240/208	1	80A, 100A	180° F
EB-CX-36	36	122,800	150	240/208	1	100A, 100A	180° F
EB-CX-40	40	136,400	167	240/208	1	125A, 125A	180° F
EB-CX-44	44	150,100	184	240/208	1	125A, 125A	180° F
EB-CX-18-60	18	61,400	18	600	3	30A	180° F
EB-CX-24-60	24	81,800	24	600	3	30A	180° F
EB-CX-30-60	30	102,300	29	600	3	45A	180° F
EB-CX-36-60	36	122,800	35	600	3	45A	180° F
EB-CX-45-60	45	153,500	44	600	3	60A	180° F
EB-CX-54-60	54*	184,200	52	600	3	70A	180° F

*Need a boiler larger than 54 kW? We have models available up to 300 kW. Visit www.electromn.com for details.

All specifications subject to ELECTRO INDUSTRIES STANDARD TERMS AND CONDITIONS, download at www.electromn.com/terms.pdf.

TS COMMERCIAL SERIES

Dimensions

- 20"W x 38"H x 21"D
- 2" NPT
- 230 lbs
- 13.12 gallon vessel

Specification Sheet

- BL508



TO LOCATE A CONTRACTOR OR DISTRIBUTOR IN YOUR AREA VISIT WWW.ELECTROMN.COM AND CLICK ON DEALER FINDER



**ELECTRO
INDUSTRIES**

Monticello, Minnesota
800.922.4138
www.electromn.com