



DP14HM COMMERCIAL

Cooling Capacity: 34,400 - 58,000 BTU/h
Heating Capacity: 33,200 - 57,000 BTU/h

3 - 5 TON THREE-PHASE
PACKAGED HEAT PUMPS
14 SEER

■ Contents	
Nomenclature	2
Product Specifications	3
Expanded Cooling Data	4
Expanded Heating Data	10
Heat Kit Electrical Data	11
Airflow Data	12
Dimensions	13
Wiring Diagram	14
Accessories	16



■ Standard Features

- Energy-efficient compressor with internal relief valve
- Fully charged with R-410A chlorine-free refrigerant
- Multi-speed EEM blower motor
- Convertible airflow: horizontal or downflow
- Copper tube / aluminum fin condenser coil
- All-aluminum evaporator coils
- Totally enclosed, permanently lubricated condenser fan motor
- Electric heat kit available as a field-installed accessory
- AHRI Certified; ETL Listed
- Two-stage cooling on 5-ton units

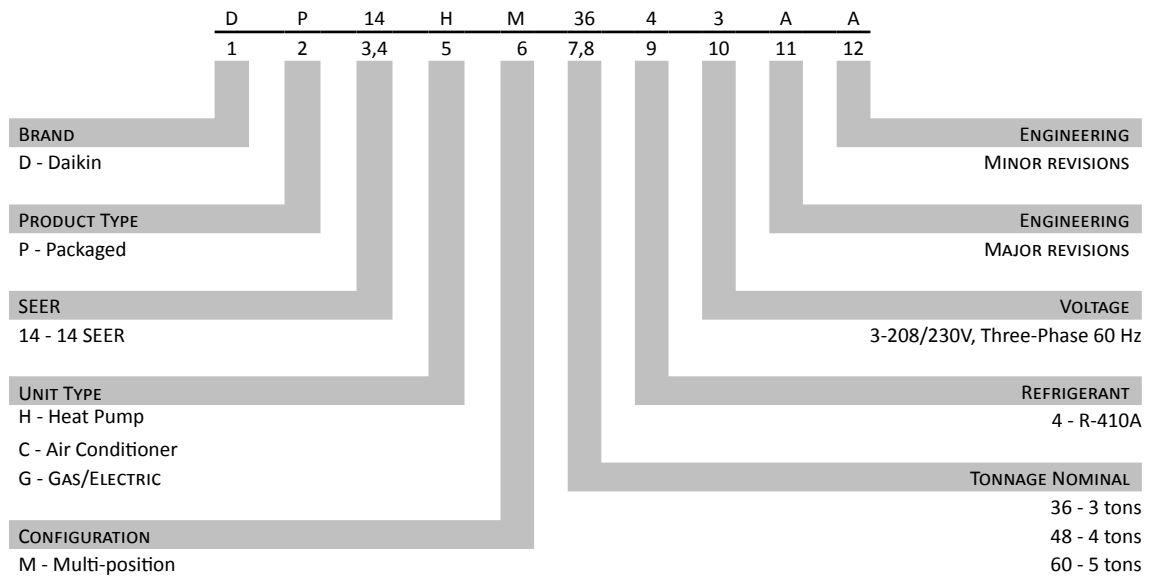
■ Cabinet Features

- Heavy-gauge galvanized-steel cabinet
- Attractive Nickel Gray powder-paint finish
- Fully insulated blower compartment with convenient access panels
- Louvered condenser coil protection
- One footprint; two heights



* Complete warranty details available from your local distributor or manufacturer's representative or at www.daikincomfort.com.

NOMENCLATURE



	DP14HM 3643A*	DP14HM 4843A*	DP14HM 6043A*
COOLING CAPACITY			
Total BTU/h	34,400	48,000	58,000
Sensible BTU/h	26,200	36,400	42,500
SEER / EER	14/11	14/11	14/11
Decibels	81	79	80
AHRI #s	9956304	9956305	9956306
HEATING CAPACITY			
BUT/h (47°F)	33,200	45,500	57,000
C.O.P (47°F)	3.6	3.6	3.5
BUT/h (17°F)	19,000	26,600	31,400
C.O.P (17°F)	2.2	2.2	2.2
HSPF	8.0	8.0	8.0
EVAPORATOR MOTOR			
Type	EEM	EEM	EEM
Wheel (DxW)	10 x 9	10 x 9	10 x 9
Nominal Cooling CFM	1,200	1,600	1,850
FLA/LRA	3.8 / --	5.4 / --	7.0 / --
No. of Speeds	5	5	5
Horsepower - RPM	½ - 1,050	¾ - 1,050	1 - 1,050
EVAPORATOR COIL			
Face Area (ft ²)	4.55	6.20	6.20
Rows Deep/ Fin per Inch	4 / 14	4 / 14	4 / 14
Drain Size (NPT)	¾"	¾"	¾"
Refrigerant Charge (oz.)	115	153	180
CONDENSER FAN / COIL			
Horsepower - RPM	¼ - 830	¼ - 1,075	⅓ - 1,075
FLA/ LRA	1.4 / 3.0	1.4 / 2.9	2.0 / 3.0
Fan Diameter / # Fan Blades	22 / 4	22 / 3	22 / 3
Face Area (ft ²)	12.21	15.30	21.32
Rows Deep/ Fin per Inch	2 / 16	2 / 16	2 / 16
COMPRESSOR			
Quantity / Type	1 / Scroll	1 / Scroll	1 / Scroll
Stage	Single	Single	2 Stage
Compressor RLA/ LRA	10.4 / 73	13.7 / 83.1	16.5/ 110
ELECTRICAL DATA			
Voltage/ Phase/ Frequency	208-230/3/60	208-230/3/60	208-230/3/60
Total Unit Amps	15.6	20.5	25.5
Min. Circuit Ampacity ¹	18.2	23.9	29.6
Max. Overcurrent Protection ²	25 amps	35 amps	45 amps
SHIPPING WEIGHT (LBS)	400	475	495

¹ Wire size should be determined in accordance with National Electrical Codes. Extensive wire runs will require larger wire sizes.

² May use fuses or HACR-type circuit breakers of the same size as noted.

Note: Always check the S&R plate for electrical data on the unit being installed.

EXPANDED HEATING DATA

DP14HM3643A**

	OUTDOOR AMBIENT TEMPERATURE																	
	65	60	55	50	47	45	40	35	30	25	20	17	15	10	5	0	-5	-10
MBh	41.7	39.5	37.2	34.8	33.2	32.2	29.9	27.6	23.7	21.9	20.1	19.0	18.3	16.4	14.6	12.7	10.8	8.9
T/R	32.2	30.5	28.7	26.8	25.6	24.8	23.1	21.3	18.3	16.9	15.5	14.7	14.1	12.7	11.2	9.8	8.4	6.8
kW	2.76	2.71	2.66	2.60	2.57	2.55	2.49	2.44	2.53	2.47	2.41	2.38	2.36	2.30	2.24	2.18	2.13	2.07
Amps	7.0	6.6	6.4	6.1	6.0	5.9	5.7	5.5	5.4	5.2	5.1	5.0	5.0	4.9	4.7	4.5	4.4	4.2
COP	4.42	4.27	4.10	3.91	3.78	3.70	3.51	3.30	2.74	2.59	2.44	2.34	2.27	2.09	1.90	1.70	1.49	1.26
HI PR	391	375	361	345	337	330	318	305	292	279	268	261	257	247	237	228	220	212
LO PR	134	125	117	107	101	97	90	80	72	64	57	53	51	43	37	31	27	21

Above information is for nominal CFM and 70 degree indoor dry bulb. Instantaneous capacity listed.

High pressure is measured at the liquid line access fitting.

Amps Unit amps (comp.+ evaporator motor + condenser fan motor)

Low pressure is measured at the compressor suction access fitting.

DP14HM4843A*

	OUTDOOR AMBIENT TEMPERATURE																	
	65	60	55	50	47	45	40	35	30	25	20	17	15	10	5	0	-5	-10
MBh	57.3	54.3	51.1	47.7	45.6	44.2	41.0	37.8	33.0	30.5	28.1	26.5	25.5	22.9	20.3	17.7	15.1	12.4
T/R	33.2	31.4	29.6	27.6	26.4	25.6	23.8	21.9	19.1	17.6	16.2	15.3	14.8	13.3	11.7	10.2	8.7	7.2
kW	3.87	3.79	3.71	3.64	3.59	3.56	3.49	3.41	3.41	3.33	3.25	3.21	3.18	3.10	3.02	2.94	2.86	2.79
Amps	19.0	17.7	16.7	15.8	15.3	15.0	14.2	13.6	13.1	12.5	12.0	11.8	11.6	11.1	10.5	10.0	9.3	8.5
COP	4.34	4.19	4.02	3.84	3.71	3.63	3.44	3.25	2.84	2.68	2.53	2.42	2.35	2.16	1.97	1.76	1.54	1.30
HI PR	387	371	356	341	333	326	314	301	289	276	265	258	254	244	235	225	217	209
LO PR	129	120	112	103	97	93	86	77	69	62	54	50	49	41	35	30	26	21

DP14HM6043A*

	OUTDOOR AMBIENT TEMPERATURE																	
	65	60	55	50	47	45	40	35	30	25	20	17	15	10	5	0	-5	-10
MBh	71.6	67.8	63.8	59.7	57.0	55.2	51.3	47.3	39.1	36.1	33.3	31.4	30.2	27.1	24.1	21.0	17.9	14.7
T/R	35.9	33.9	32.0	29.9	28.5	27.6	25.7	23.7	19.6	18.1	16.6	15.7	15.1	13.6	12.0	10.5	9.0	7.3
kW	5.06	4.96	4.85	4.75	4.69	4.65	4.55	4.44	4.10	4.00	3.91	3.85	3.81	3.72	3.62	3.53	3.43	3.34
Amps	30.1	27.1	24.6	22.5	21.2	20.6	18.8	17.3	16.0	14.8	13.6	13.0	12.7	11.4	9.9	8.7	7.2	5.3
COP	4.15	4.01	3.85	3.68	3.56	3.48	3.30	3.12	2.79	2.64	2.49	2.39	2.32	2.14	1.94	1.74	1.53	1.29
HI PR	426	409	393	376	367	360	346	332	318	304	292	285	280	269	259	248	239	231
LO PR	126	117	110	101	95	92	84	75	68	61	53	49	48	40	35	29	26	20

Above information is for nominal CFM and 70 degree indoor dry bulb. Instantaneous capacity listed.

High pressure is measured at the liquid line access fitting.

Amps Unit amps (comp.+ evaporator motor + condenser fan motor)

Low pressure is measured at the compressor suction access fitting.

MODEL & HEAT KIT USAGE	CIRCUIT #1		ACTUAL kW / BTU@ 240V
	MCA ¹	MOD ²	
DP14HM3643**	3.8 / 3.8	--	--
HKR3-15B	39 / 45	60 / 60	15.0 / 51,000
DP14HM4843**	5.8 / 5.8	--	--
HKR3-15B	39 / 45	60 / 60	15.0 / 51,000
HKR3-20B	51 / 55	60 / 60	19.5 / 66,500
DP14HM6043**	7.6 / 7.6	--	--
HKR3-15B	39 / 45	60 / 60	15.0 / 51,000
HKR3-20B	51 / 55	60 / 60	19.5 / 66,500

- ¹ Minimum Circuit Ampacity @ 208 / 240 V
- ² Maximum Overcurrent Protection device @ 208 / 240 V
- * Revision level that may or may not be designated
- C Circuit Breaker option

DP14HM3643*

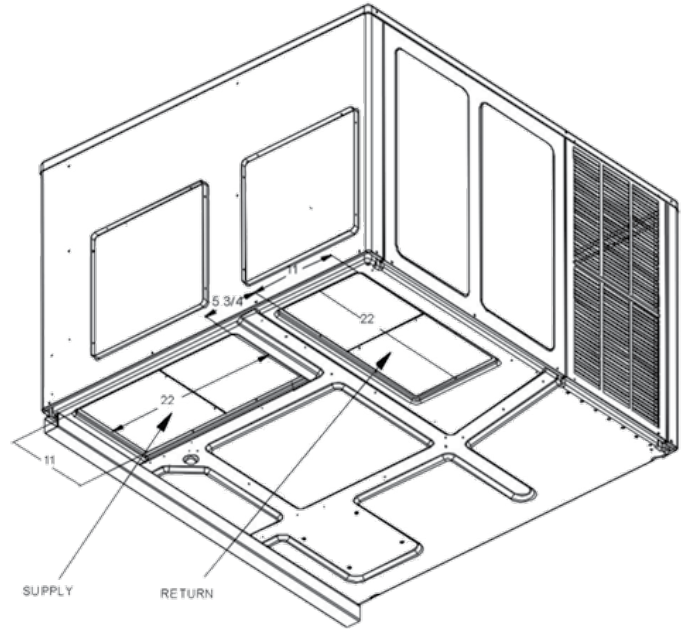
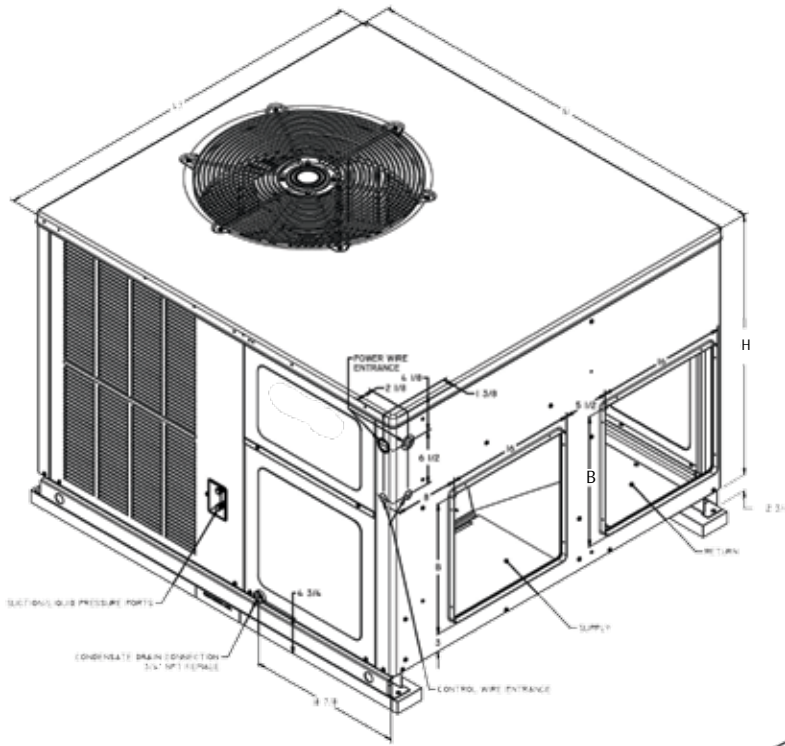
	MOTOR SPEED	VOLTS		STATIC								
				0.1	0.2	0.3	0.4	0.5	0.6	0.7	0.8	0.9
Horizontal Position	T1	230	CFM Watts	846 74	762 83	716 94	585 98	519 108	---	---	---	---
	T2 / T3	230	CFM Watts	1278 221	1214 218	1182 232	1129 245	1072 253	1013 264	950 265	853 275	788 272
	T4 / T5	230	CFM Watts	1604 396	1560 402	1507 408	1468 424	1415 426	1364 423	1321 444	1276 454	1218 454
Downshot Position	T1	230	CFM Watts	809 73	730 85	623 92	542 98	485 107	441 112	---	---	---
	T2 / T3	230	CFM Watts	1284 220	1223 227	1175 241	1097 247	1031 255	974 262	871 272	804 277	761 285
	T4 / T5	230	CFM Watts	1578 401	1539 409	1498 421	1452 425	1396 438	1332 439	1279 452	1224 453	1161 455

DP14HM4843*

	MOTOR SPEED	VOLTS		STATIC								
				0.1	0.2	0.3	0.4	0.5	0.6	0.7	0.8	0.9
Horizontal Position	T1	230	CFM Watts	1167 139	1101 144	1045 156	992 165	939 177	870 193	802 203	732 217	681 223
	T2 / T3	230	CFM Watts	1723 372	1637 370	1598 381	1554 390	1509 404	1467 411	1420 420	1361 427	1295 441
	T4 / T5	230	CFM Watts	2012 578	1965 593	1912 599	1871 606	1809 610	1770 627	1741 626	1691 634	1635 638
Downshot Position	T1	230	CFM Watts	1155 153	1074 156	1023 169	969 180	896 195	805 205	755 216	667 226	626 230
	T2 / T3	230	CFM Watts	1670 383	1596 392	1558 399	1484 408	1467 419	1383 434	1339 436	1259 447	1168 449
	T4 / T5	230	CFM Watts	1949 603	1881 607	1853 608	1792 616	1753 622	1699 626	1621 648	1561 650	1522 645

DP14HM6043*

	SPEED	VOLTS		STATIC								
				0.1	0.2	0.3	0.4	0.5	0.6	0.7	0.8	0.9
Horizontal Position	T1	230	CFM Watts	1427 222	1370 229	1317 237	1273 256	1204 256	1165 276	1111 291	1058 299	1003 320
	T2 / T3	230	CFM Watts	1935 498	1885 512	1848 515	1809 520	1755 541	1705 549	1659 559	1616 567	1567 569
	T4 / T5	230	CFM Watts	2232 805	2188 795	2144 790	2087 827	2035 830	2017 842	1963 864	1926 864	1869 848
Downshot Position	T1	230	CFM Watts	1347 242	1293 251	1236 268	1184 276	1117 290	1054 305	996 321	934 330	871 348
	T2 / T3	230	CFM Watts	1827 529	1780 538	1739 548	1683 557	1633 557	1588 576	1518 578	1462 604	1404 601
	T4 / T5	230	CFM Watts	2111 835	2057 843	2030 846	1979 852	1947 870	1957 959	1922 956	1868 960	1818 966



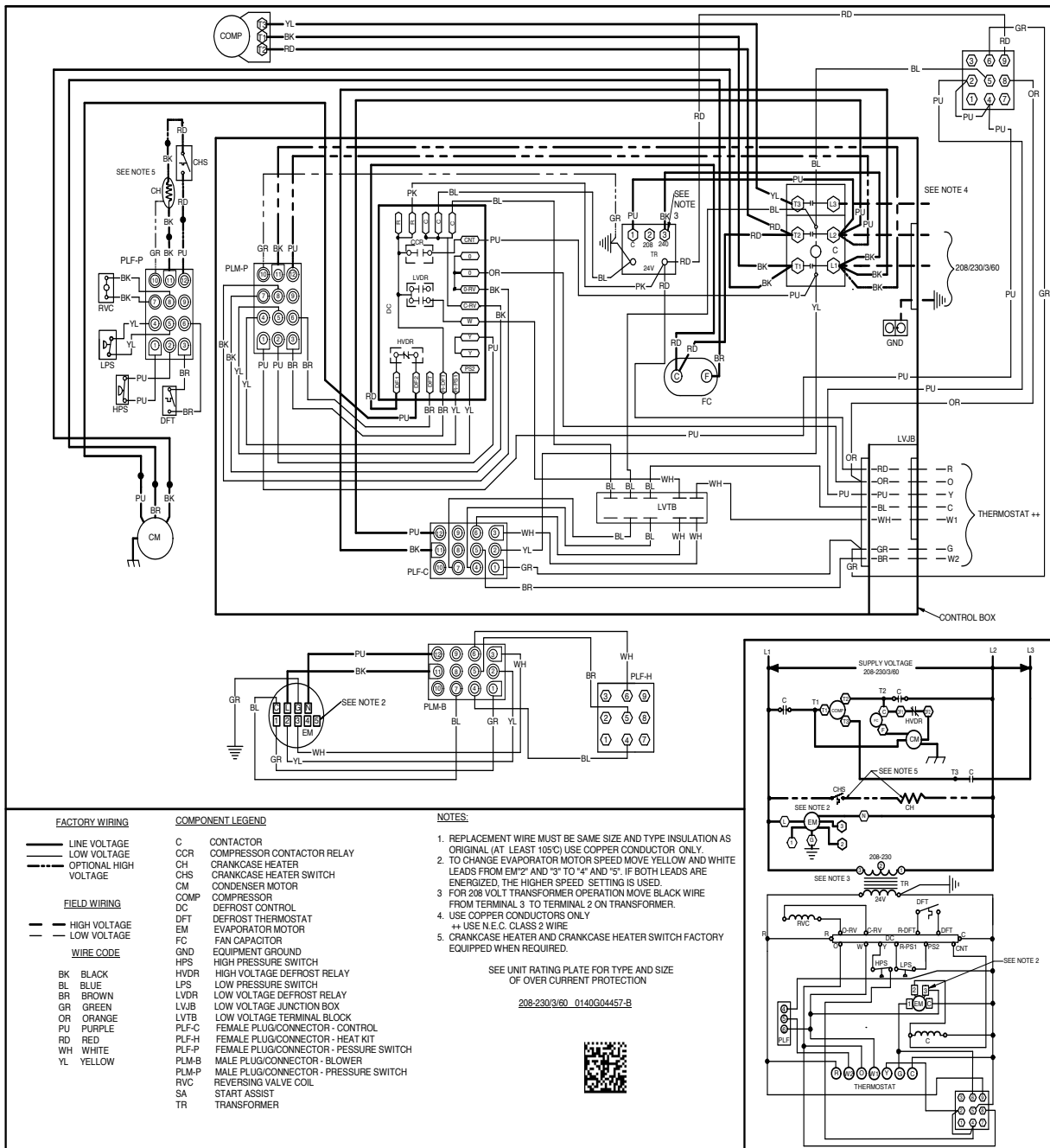
DIMENSIONS

MODEL	W"	D"	H"	B	H
DP14HM3643	47	51	34 $\frac{3}{4}$	16"	32 $\frac{1}{2}$ "
DP14HM4843	47	51	42 $\frac{3}{4}$	18"	40"
DP14HM6043	47	51	42 $\frac{3}{4}$	18"	40"

FILTERS

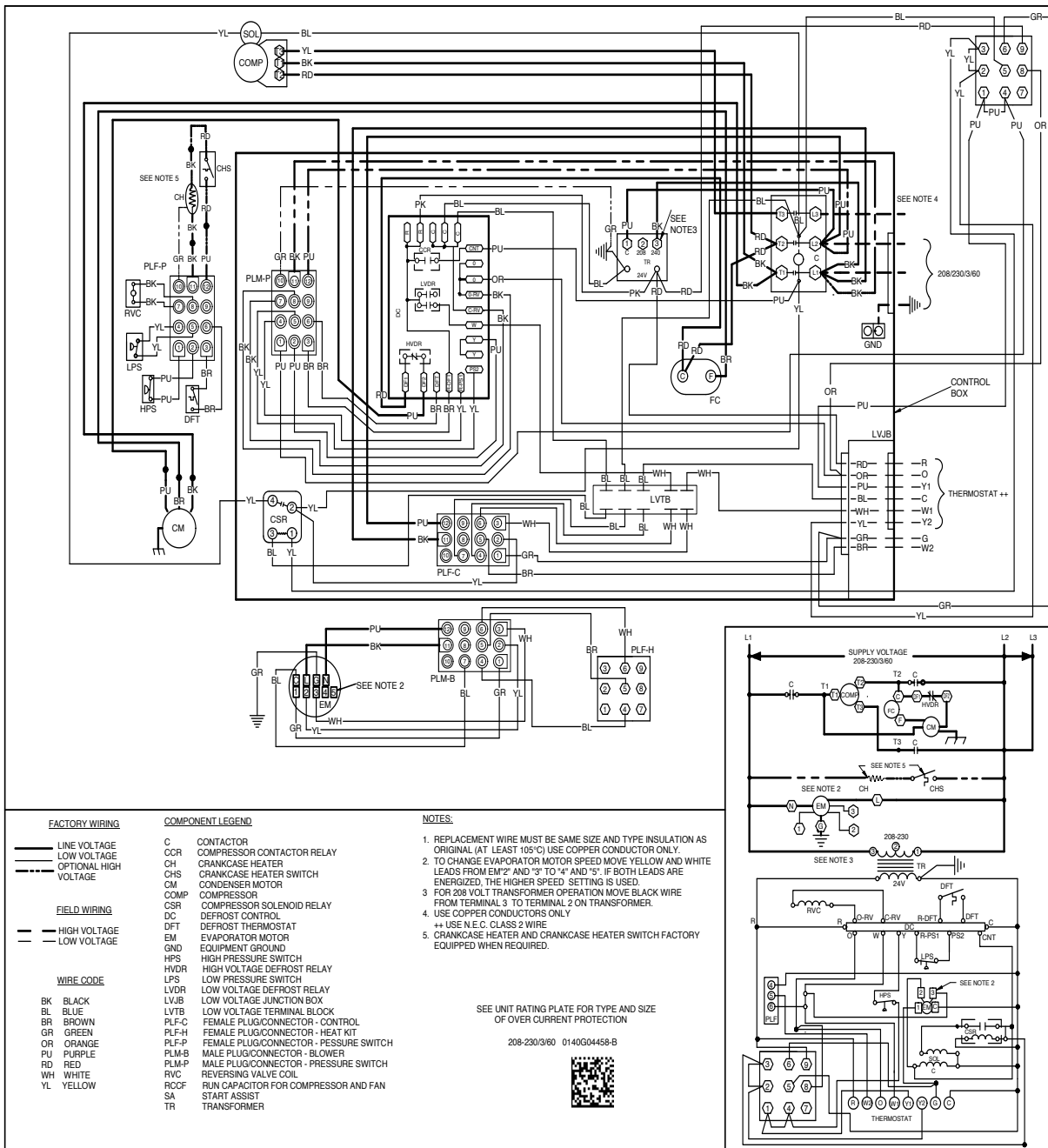
MODEL	DIMENSIONS	QTY.
DP14HMMFR102 (for medium models)	16" x 25" x 2"	1
DP14HMMFR103 (for large models)	20" x 25" x 2"	2

WIRED DIAGRAM – DP14HM36/4843



Wiring is subject to change. Always refer to the wiring diagram on the unit for the most up-to-date wiring.

	WARNING	High Voltage: Disconnect all power before servicing or installing this unit. Multiple power sources may be present. Failure to do so may cause property damage, personal injury, or death.	
--	----------------	---	--



Wiring is subject to change. Always refer to the wiring diagram on the unit for the most up-to-date wiring.

	WARNING	High Voltage: Disconnect all power before servicing or installing this unit. Multiple power sources may be present. Failure to do so may cause property damage, personal injury, or death.	
--	----------------	---	--

ACCESSORIES

ITEM	DESCRIPTION	FITS CHASSIS SIZE
20464501NGK	Horizontal Duct Cover	Medium
20464502NGK	Horizontal Duct Cover	Large
CDK36	Concentric Kit	Medium
CDK4872	Concentric Kit	Large
DDNECNJPCHMM	Downflow Economizer	Medium
DDNECNJPCHML	Downflow Economizer	Large
DDNIFRPCHMM	Downflow Internal Filter Rack	Medium
DDNIFRPCHML	Downflow Internal Filter Rack	Large
DHZECNJPGCHM	Horizontal Economizer	Medium
DHZECNJPGCHL	Horizontal Economizer	Large
DPHFRA	External Horizontal Filter Rack	All Sizes
DHZIFRPGCHA	Internal Horizontal Filter Rack	All Sizes
DDN25FDPGCHMM	25% Manual Downflow Fresh Air Damper	Medium
DDN25FDPGCHML	25% Manual Downflow Fresh Air Damper	Large
DHZ25FDPGCHMM	25% Manual Horizontal Fresh Air Damper	Medium
DHZ25FDPGCHML	25% Manual Horizontal Fresh Air Damper	Large
DDN25MFDPGCHMM	25% Motorized Downflow Fresh Air Damper	Medium
DDN25MFDPGCHML	25% Motorized Downflow Fresh Air Damper	Large
DHZ25MFDPGCHMM	25% Motorized Horizontal Fresh Air Damper	Medium
DHZ25MFDPGCHML	25% Motorized Horizontal Fresh Air Damper	Large
OT/EHR18-60	Outdoor Thermostat & Emergency Heat Relay Kit	All Sizes
OT18-60A	Outdoor Thermostat Kit w/ Lockout Stat	All Sizes
D14CRBPGCHMA	Roof Curb	All Sizes
SQRPG101/102	Square-to-Round Adapter w/16" Round for Downflow Application	Medium
SQRPG103	Square-to-Round Adapter w/18" Round for Downflow Application	Large
SQRPGH101/102	Square-to-Round Adapter w/16" Round for Horizontal Application	Medium
SQRPGH103	Square-to-Round Adapter w/18" Round for Horizontal Application	Large