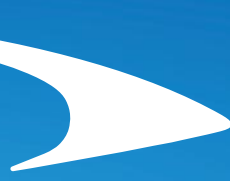
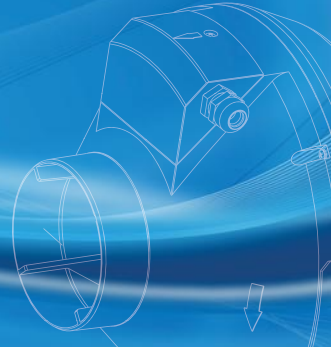




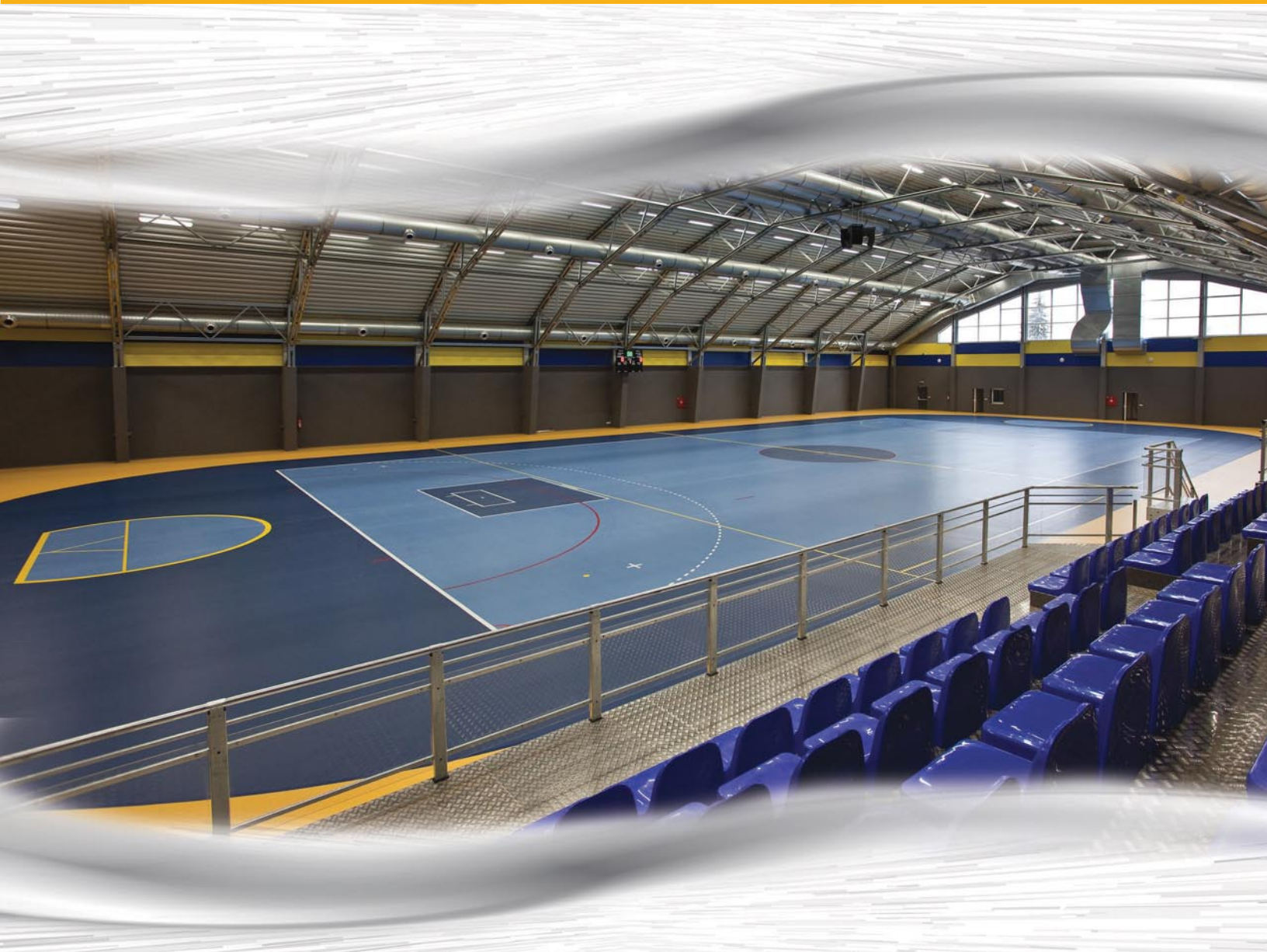
CFM[™]
CONTINENTAL FAN



better AIRFLOW by DESIGN[™]



Commercial Fans & Dampers



DUCT FANS

AXC IN-LINE DUCT FANS

FEATURES & BENEFITS

- Heavy gauge, drawn steel housing with baked epoxy finish
- 120V operation, other voltages available
- Easy to install - mounting brackets included
- May be mounted in any position
- Fans may be used to supply or exhaust air
- Suitable for air temperatures up to 140 F / 60 C
- Energy efficient - speed controllable (optional solid state speed control)
- Optional pre-wired with 120V power cord (AXC-C)
- Exceptionally quiet and efficient BC centrifugal motorized impeller
- External rotor motor design results in superior motor cooling and durability
- Permanently lubricated ball bearing motor for maintenance-free operation
- Automatic reset thermal overload protection
- Fan and motor are precision balanced for quiet and vibration-free operation
- Easily accessible, external junction box with pre-wired capacitor
- Available to fit duct sizes 4" - 14"; airflow capacities to 1,400 cfm



APPLICATIONS

- Conference room exhaust
- Computer rooms
- Humidity and moisture removal
- Powered make-up air
- Equipment and spot cooling
- Hair and nail salons

ACCESSORIES / OPTIONS

- Speed controls
- Pressure switches
- Backdraft dampers
- Supply & exhaust grilles
- Mounting clamps
- Roof & wall caps

MODEL	WATTS	RPM	AIRFLOW PERFORMANCE (CFM)												
			0" SP	0.2" SP	0.4" SP	0.6" SP	0.8" SP	1.0" SP	1.2" SP	1.5" SP	2.0" SP	3.0" SP			
AXC100A-ES	43.3	2580	147	130	107	82	57	34	11						
AXC100B	83.4	2620	150	140	127	112	94	74	53	23					
AXC125A-ES	44.4	2520	179	150	121	87	49	14							
AXC125B	85.4	2750	183	160	141	122	101	77	51	14					
AXC150A-ES	46.8	2390	235	190	148	97	44								
AXC150B-ES	89.2	2450	308	260	216	175	139	108	81	47					
AXC200A-ES	84.5	2500	368	300	234	184	149	114	70						
AXC200B-ES	188	2550	579	520	453	387	329	282	245	206	154				
AXC250-ES	198	2470	616	550	488	431	379	330	286	227	143				
AXC300A-ES	206	2450	780	700	595	420	330	290	255	210	132				
AXC300B-ES	312	2780	970	910	803	680	559	453	367	273	164				
AXC355A	334	1360	1325	1150	960	790	660	550	430	238					
AXC355B	830	2900	1400	1370	1325	1250	1210	1135	1090	1000	880	675			

FOR PRE-WIRED WITH 120V POWER CORD, ADD -C TO MODEL.

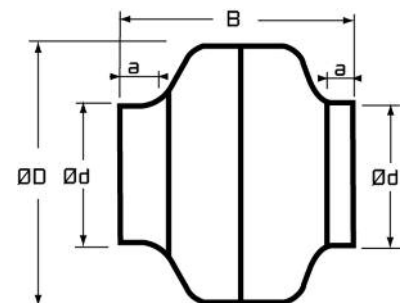
MODEL	DIMENSIONS IN INCHES*				SHIP WT (LBS)
	D	d	a	B	
AXC100A-ES	9.5	3.9	1.0	8.3	7.5
AXC100B	9.5	3.9	1.0	8.3	8.0
AXC125A-ES	9.5	4.8	1.0	8.3	7.5
AXC125B	9.5	4.8	1.0	8.3	7.5
AXC150A-ES	9.5	5.8	1.0	8.3	7.5
AXC150B-ES	13.2	5.8	1.0	9.1	12.5
AXC200A-ES	13.2	7.8	1.0	9.1	12.0
AXC200B-ES	13.2	7.8	1.0	9.1	15.0
AXC250-ES	13.2	9.8	1.0	9.1	15.0
AXC300A-ES	15.9	11.8	1.2	11.8	18.0
AXC300B-ES	15.9	11.8	1.2	11.8	18.0
AXC355A	19.0	14.0	1.5	15.7	35.5
AXC355B	19.0	14.0	1.5	15.7	41.0

*DO NOT USE FOR CONSTRUCTION
CONSULT FACTORY FOR CERTIFIED PRINTS



AXC models 100A through 300B are cULus listed
AXC models 355A and 355B are CSA listed to both US and Canadian standards

Products are HVI certified for airflow and power at 0.2" SP. HVI currently does not have a standard in place for testing the sound of a remote mounted fan. Many factors, such as ducting and fan location, can contribute to sound levels. Generally, a remote mounted fan should be quieter than a typical ceiling mounted fan.



AXP IN-LINE DUCT FANS

FEATURES & BENEFITS

- UV and corrosion resistant, durable plastic housing
- 120V operation, other voltages available
- Easy to install - mounting brackets included
- May be mounted in any position
- Fans may be used to supply or exhaust air
- Suitable for air temperatures up to 122 F
- Energy efficient - speed controllable (optional solid state speed control)
- Optional pre-wired with 120V power cord (AXP-C)
- Exceptionally quiet and efficient BC centrifugal motorized impeller
- External rotor motor design results in superior motor cooling and durability
- Permanently lubricated ball bearing motor for maintenance-free operation
- Automatic reset thermal overload protection
- Fan and motor are precision balanced for quiet and vibration-free operation
- Easily accessible, external junction box with pre-wired capacitor
- Available to fit duct sizes 4" - 12"; airflow capacity to 837 cfm



APPLICATIONS

- Conference room exhaust
- Computer rooms
- Humidity and moisture removal
- Powered make-up air
- Equipment and spot cooling
- Hair and nail salons

ACCESSORIES / OPTIONS

- Speed controls
- Pressure switches
- Backdraft dampers
- Supply & exhaust grilles
- Mounting clamps
- Roof & wall caps

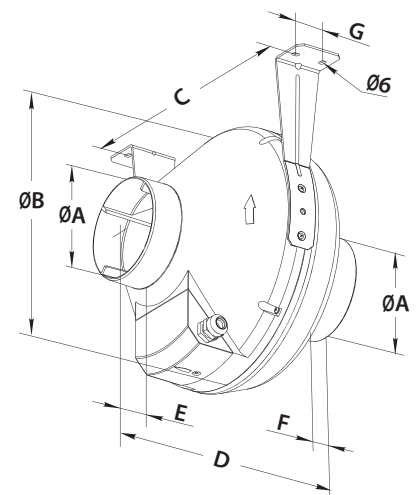
MODEL	RPM	WATTS	AIRFLOW PERFORMANCE (CFM)					
			0" SP	0.2" SP	0.5" SP	0.75" SP	1.0" SP	1.5" SP
AXP100	3088	106	162	150	134	120	104	67
AXP125	2960	114	235	214	178	151	123	72
AXP150	2907	113	317	289	247	212	178	68
AXP200	2650	142	583	544	462	390	320	196
AXP250	2604	293	735	675	588	507	432	307
AXP300	2741	271	837	772	659	564	474	307

MODEL	DUCT DIA.	DIMENSIONS IN INCHES*							SHIP WT (LBS)
		ØA	ØB	C	D	E	F	G	
AXP100	4"	3.9	9.8	10.6	9.1	1.2	1.1	1.2	7.0
AXP125	5"	4.9	9.8	10.6	8.7	1.2	1.1	1.2	7.0
AXP150	6"	5.9	11.8	12.2	11.3	1.2	1.2	1.2	8.0
AXP200	8"	7.9	13.4	13.9	10.9	1.2	1.2	1.6	9.0
AXP250	10"	9.8	13.4	13.9	10.4	1.2	1.2	1.6	12.0
AXP300**	12"	12.3	15.8	16.3	16.3	1.6	2.2	1.6	14.0

*DO NOT USE FOR CONSTRUCTION

**INCLUDES 2 DUCT REDUCERS TO FIT 12" DUCT

CONSULT FACTORY FOR CERTIFIED PRINTS



DUCT FANS

EXT EXTERNAL MOUNT DUCT FANS

FEATURES & BENEFITS

- Heavy gauge, galvanized steel housing with baked epoxy finish
- 120V operation
- May be mounted on the exterior of a building
- Enclosed motor housing for dust & lint
- Suitable for air temperatures up to 140 F / 60 C
- Energy efficient - speed controllable (optional solid state speed control)
- Rugged construction for long life
- Built-in backdraft damper
- Exceptionally quiet and efficient BC centrifugal motorized impeller
- External rotor motor design results in superior motor cooling and durability
- Permanently lubricated ball bearing motor for maintenance-free operation
- Automatic reset thermal overload protection
- Fan and motor are precision balanced for quiet and vibration-free operation
- Pre-wired capacitor
- Available to fit duct sizes in 4", 6", & 8"; airflow capacities to 445 cfm



APPLICATIONS

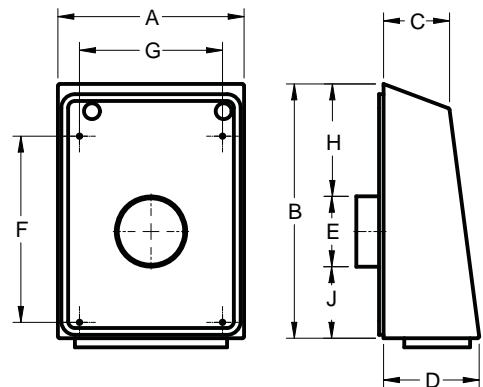
- High rise buildings
- Bathroom exhaust
- Apartments/townhouses
- Crawl space ventilation
- Basement kitchens, washrooms
- Ground floor installations

ACCESSORIES / OPTIONS

- Speed controls
- Pressure switches
- Backdraft dampers
- Supply & exhaust grilles
- Mounting clamps
- Roof & wall caps

MODEL	AIRFLOW PERFORMANCE (CFM)											
	WATTS	RPM	0" SP	0.1" SP	0.3" SP	0.4" SP	0.5" SP	0.8" SP	1.0" SP	1.3" SP	1.5" SP	2.0" SP
EXT100A	66	1560	118	101	84	72	62	44	28	16		
EXT100B	81	2260	177	163	150	140	125	100	72	47	26	
EXT150A	90	2436	227	202	186	174	162	130	85	21		
EXT150B	140	2830	396	373	350	326	311	268	232	190	149	66
EXT200A	140	2820	445	393	358	328	300	254	212	170	119	
EXT200B	186	2310	420	379	353	329	298	249	211	172	142	

MODEL	DIMENSIONS IN INCHES*									SHIP WT (LBS)
	A	B	C	D	E	F	G	H	J	
EXT100A	10.2	14.0	3.6	5.2	3.8	10.3	7.9	6.2	3.8	11.6
EXT100B	10.2	14.0	3.6	5.2	3.8	10.3	7.9	6.2	3.8	11.6
EXT150A	10.2	14.0	3.6	5.2	5.8	10.3	7.9	5.2	2.8	11.6
EXT150B	14.2	17.3	3.6	5.2	5.8	12.3	11.6	7.2	4.2	18.0
EXT200A	14.2	17.3	3.6	5.2	7.8	12.3	11.6	6.3	3.2	18.0
EXT200B	14.2	17.3	3.6	5.2	7.8	12.3	11.6	6.3	3.2	19.0



*DO NOT USE FOR CONSTRUCTION

CONSULT FACTORY FOR CERTIFIED PRINTS



MBI CENTRIFUGAL IN-LINE FANS

FEATURES & BENEFITS

- Steel housing with corrosion resistant finish
- 120V operation, other voltages available
- Removable fan cover for easy maintenance
- Easy to install - mounting brackets included
- Multiple source ducting options
- Fans may be used to supply or exhaust air
- Suitable for air temperatures from -13 F to 140 F
- Energy efficient - speed controllable (optional solid state speed control)
- Exceptionally quiet and efficient BC centrifugal motorized impeller
- Single-phase asynchronous external rotor motor
- Permanently lubricated ball bearing motor for maintenance-free operation
- Automatic reset thermal overload protection
- Fan and motor are precision balanced for quiet and vibration-free operation
- External junction box contains pre-wired capacitor
- Available to fit duct sizes 4", 5" & 6"; airflow capacities to 290 cfm



APPLICATIONS

- Condominium ventilation
- Garage ventilation
- Apartment ventilation
- Office ventilation
- Multi-unit housing ventilation
- Whole house ventilation

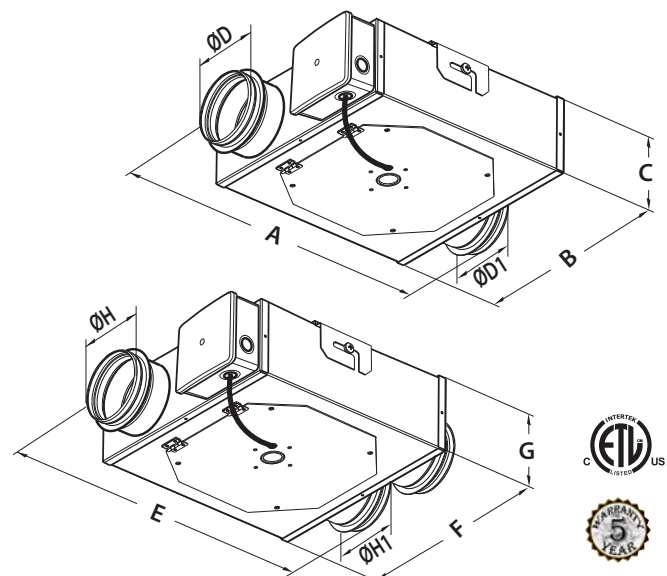
ACCESSORIES / OPTIONS

- Speed controls
- Pressure switches
- Backdraft dampers
- Supply & exhaust grilles
- Mounting clamps
- Roof & wall caps

MODEL	RPM	WATTS	AIRFLOW PERFORMANCE (CFM)									
			0" SP	0.125" SP	0.2" SP	0.25" SP	0.50" SP	0.75" SP	1.0" SP	1.25" SP	1.5" SP	1.75" SP
MBI100	3090	105	147	143	139	137	123	110	99	90	76	56
MBI125	2920	113	173	169	165	162	147	126	106	85	58	30
MBI150	2020	110	221	214	206	200	171	145	120	92	65	36
MBI125/100	2920	117	232	225	219	216	197	173	148	125	99	73
MBI150/125	2155	110	290	273	262	252	211	178	146	114	84	57

IN-LINE BOOSTER FAN							
MODEL	DUCT DIA.	A	B	C	ØD	ØD1	SHIP WT (LBS)
MBI100	4"	14.3	9.9	4.8	3.9	3.9	12.0
MBI125	5"	16.6	9.9	5.7	4.9	4.9	12.0
MBI150	6"	19.7	11.8	7.1	5.9	5.9	16.0

TWIN INTAKE FAN							
MODEL	DUCT DIA.	E	F	G	ØH	ØH1	SHIP WT (LBS)
MBI125/100	5" / 4"	16.6	9.9	5.7	4.9	3.9	12.0
MBI150/125	6" / 5"	19.7	11.8	7.1	5.9	4.9	16.0



*DO NOT USE FOR CONSTRUCTION

CONSULT FACTORY FOR CERTIFIED PRINTS



DUCT FANS

MFT MIXED FLOW IN-LINE FANS

FEATURES & BENEFITS

- UV and corrosion resistant, durable plastic housing
- Powerful, compact and quiet mixed flow impeller
- Easy to install - mounting brackets included - simple maintenance
- May be mounted in any position
- Ideal for long duct runs
- Fans may be used to supply or exhaust air
- Suitable for air temperatures up to 140 F
- Optional pre-wired with 120V power cord (MFT-C)
- Energy efficient two speed motor
- Single-phase asynchronous motor; IPX4 protection
- Permanently lubricated ball bearing motor for maintenance-free operation
- Automatic reset thermal overload protection
- Fan and motor are precision balanced for quiet and vibration-free operation
- Easy access to motor & impeller; no need to dismantle duct work
- Available to fit duct sizes 4" - 12" ; airflow capacities to 1,051 cfm



APPLICATIONS

- Conference room exhaust
- Computer rooms
- Humidity and moisture removal
- Powered make-up air
- Equipment and spot cooling
- Hair and nail salons

ACCESSORIES / OPTIONS

- Speed controls
- Pressure switches
- Backdraft dampers
- Supply & exhaust grilles
- Mounting clamps
- Roof & wall caps

MODEL	SPEED	RPM	WATTS	AIRFLOW PERFORMANCE (CFM)								
				0" SP	0.125" SP	0.2" SP	0.25" SP	0.5" SP	0.75" SP	1.0" SP	1.25" SP	1.5" SP
MFT100	High	3113	36.0	105	49	37	32	13	-	-	-	-
	Low	2818	29.5	62	41	30	23	2	-	-	-	-
MFT125	High	2600	41.0	126	112	99	46	-	-	-	-	-
	Low	2350	31.0	87	64	27	4	-	-	-	-	-
MFT150	High	2033	55.0	252	233	216	199	78	10	-	-	-
	Low	1386	29.0	167	129	75	61	21	-	-	-	-
MFT200	High	2116	111.0	473	450	432	420	352	254	89	-	-
	Low	1622	69.5	349	317	294	276	158	32	-	-	-
MFT250	High	2525	200.0	880	873	866	862	816	708	581	450	323
	Low	1925	130.0	655	646	630	620	480	330	230	115	10
MFT300	High	2419	353.0	1051	1020	999	986	914	838	746	632	500
	Low	1914	236.0	830	797	770	751	638	496	335	209	109

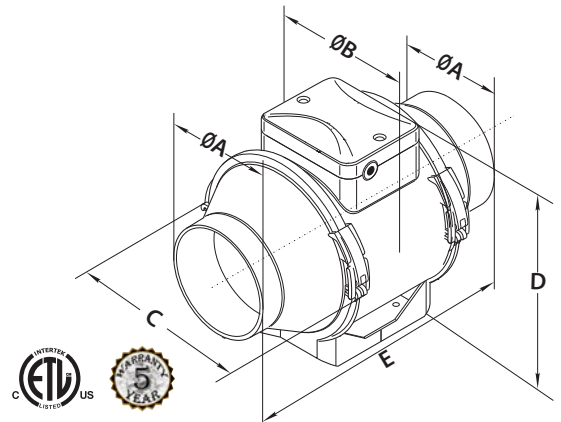
*FOR PRE -WIRED WITH 120V POWER CORD, ADD -C TO MODEL.

MODEL	DUCT DIA.	DIMENSIONS IN INCHES*					SHIP WT (LBS)
		ØA	ØB	C	D	E	
MFT100	4"	3.8	5.5	6.6	7.5	9.7	5.0
MFT125	5"	4.8	5.5	6.6	7.5	9.7	5.0
MFT150	6"	5.8	7.7	8.8	9.8	11.6	8.0
MFT200	8"	7.8	8.3	9.4	10.3	11.6	16.0
MFT250	10"	9.8	10.1	11.3	12.7	15.2	20.0
MFT300**	12"	12.3	12.7	14.3	16.1	22.9	27.0

*DO NOT USE FOR CONSTRUCTION

CONSULT FACTORY FOR CERTIFIED PRINTS

**INCLUDES 2 DUCT REDUCERS TO FIT 12" DUCT



MFTS MIXED FLOW IN-LINE FANS

FEATURES & BENEFITS

- UV and corrosion resistant, durable plastic housing
- Virtually silent mixed flow fan aerodynamically designed for smooth airflow
- Easy to install - mounting brackets included
- May be mounted in any position
- Ideal for long duct runs
- Fans may be used to supply or exhaust air
- Suitable for air temperatures up to 140 F
- Optional pre-wired with 120V power cord (MFT-S-C)
- Energy efficient two speed motor
- Single-phase asynchronous motor; IPX4 protections
- Permanently lubricated ball bearing motor for maintenance-free operation
- Automatic reset thermal overload protection
- Fan and motor are precision balanced for quiet and vibration-free operation
- Easy access to motor & impeller; no need to dismantle duct work
- Available to fit duct sizes 4", 5" & 6"; airflow capacities to 327 cfm



APPLICATIONS

- Conference room exhaust
- Computer rooms
- Humidity and moisture removal
- Powered make-up air
- Equipment and spot cooling
- Hair and nail salons

ACCESSORIES / OPTIONS

- Speed controls
- Pressure switches
- Backdraft dampers
- Supply & exhaust grilles
- Mounting clamps
- Roof & wall caps

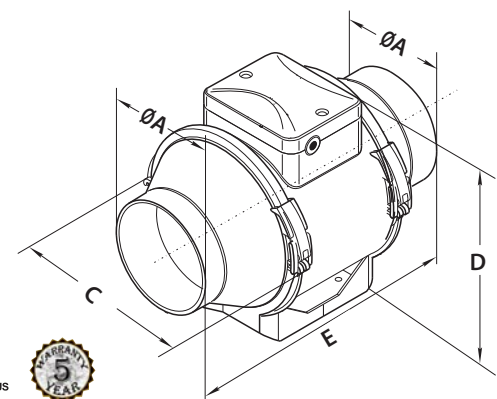
MODEL	SPEED	RPM	WATTS	AIRFLOW PERFORMANCE (CFM)											
				0" SP	0.1" SP	0.2" SP	0.3" SP	0.4" SP	0.5" SP	0.6" SP	0.7" SP	0.8" SP	0.9" SP	1.0" SP	
MFT100S	High	1994	30	146	128	110	88	64	44	21	9	-	-	-	
	Low	1500	24	109	88	68	47	22	10	-	-	-	-	-	
MFT125S	High	2059	37	200	183	161	137	93	62	32	0	-	-	-	
	Low	1360	25	132	106	80	51	13	-	-	-	-	-	-	
MFT150S	High	2617	66	327	316	299	283	268	247	225	194	138	83	50	
	Low	1933	52	240	219	194	171	134	111	86	57	27	7	-	

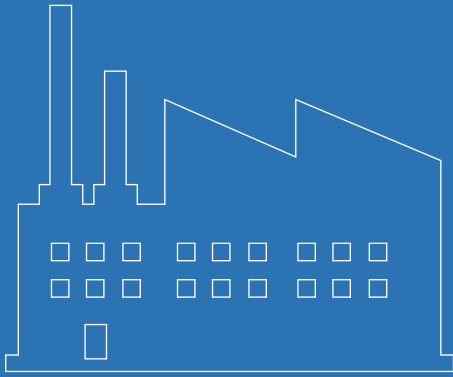
*FOR PRE - WRED WITH 120V POWER CORD, ADD -C TO MODEL.

MODEL	DIMENSIONS IN INCHES*					SHIP WT (LBS)
	DUCT DIA.	ØA	C	D	E	
MFT100S	4"	3.8	7.7	8.9	11.9	5.0
MFT125S	5"	4.8	7.7	8.9	10.2	5.0
MFT150S	6"	5.8	8.7	9.8	11.4	8.0

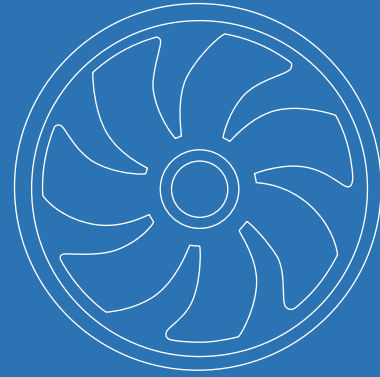
*DO NOT USE FOR CONSTRUCTION

CONSULT FACTORY FOR CERTIFIED PRINTS





***Industrial Fans
& Blowers***



***OEM Solutions
& Custom Fans***



***Commercial Fans
& Dampers***



***Residential Fans &
Air Purifiers***



Commercial Fans & Dampers

Continental Fan Manufacturing Inc.
203 Eggert Road
Buffalo, New York 14215

Continental Fan Canada Inc.
12-205 Matheson Blvd E
Mississauga, Ontario L4Z 3E3

Continental Fan Manufacturing Inc.
6274 Executive Blvd.
Dayton, Ohio 45424

1-800-779-4021 • www.continentalfan.com

Distributed by:

Commercial-1705