



GE APPLIANCES

SUBMITTALS

MultiLink Series

Rev. Aug. 2022

Outdoor

**ASH218JCDDA
ASH324JCDDA
ASH436JCDDA**

Indoor

**ASYW07CRDDA
ASYW09CRDDA
ASYW12CRDDA
ASYW18CRDDA
ASYW24CRDDA
AB09SC2VHA
AB12SC2VHA
AB18SC2VHA
USYM09UCDSA
USYM12UCDSA
USYM18UCDSA
USYM24UCDSA
USYF09UCDWA
USYF12UCDWA
USYF18UCDWA**



GE APPLIANCES
a Haier company

For more information visit us:
www.geappliances.com/ductless



Revision History

Rev. June 2022 - Submittal edition release.

Rev. Aug. 2022 - USYM18, USYF18 18K ID vapor line correction. Controller updates.



Matching Tables

ASH218JCDDA

No adapter is shipped with ASH2

	Combinations		Required Adapter
	Port B	Port A	
	1/4" x 3/8"	1/4" x 3/8"	
Two Zone	7	7	-
	9	7	-
	9	9	-
	12	7	-
	12	9	-
	12	12	-

ASH324JCDDA

ASH324JC ships with adapter D

	Combinations			Required Adapter
	Port C	Port B	Port A	
	MS: 1/4" x 3/8" EH: 1/4" x 1/2"	1/4" x 3/8"	1/4" x 3/8"	
Two Zone	7	7	---	-
	9	7	---	-
	9	9	---	-
	12	7	---	-
	12	9	---	-
	12	12	---	-
	18	7	---	D
	18	9	---	D
Three Zone	7	7	7	-
	9	7	7	-
	9	9	7	-
	12	7	7	-
	12	9	9	-
	12	9	7	-
	12	12	7	-
	18	7	7	D

Adapters

		GEA Part #
A	1/4" to 3/8" (Liquid line for ports C & D)	WJ01X23925
B	3/8" to 5/8" (Vapor line for port C)	WJ01X23924
C	1/2" to 5/8" (Vapor line for port D)	WJ01X23932
D	3/8" to 1/2" (Vapor line for port C)	WJ01X26853
E	1/2" to 3/8" (Vapor line for port C or D)	WJ01X26854

ASH436JCDDA

ASH436JC ships with adapters D, E

	Combinations				Required Adapter
	Port D	Port C	Port B	Port A	
	1/4" x 1/2"	1/4" x 3/8"	1/4" x 3/8"	1/4" x 3/8"	
Two Zone	18	9	---	---	-
	18	12	---	---	-
	24	7	---	---	C, A
	24	9	---	---	C, A
	24	12	---	---	C, A
	18	18	---	---	D
	18	24	---	---	A, B
	24	24	---	---	B, C, A, A
	Three Zone	9	9	9	---
12		9	7	---	E
12		9	9	---	E
12		12	7	---	E
18		7	7	---	-
12		12	9	---	E
18		9	7	---	-
18		9	9	---	-
12		12	12	---	E
18		12	7	---	-
24		7	7	---	C, A
18		12	9	---	-
24		9	7	---	C, A
24		9	9	---	C, A
18		12	12	---	-
24		12	7	---	C, A
24	12	9	---	C, A	
24	12	12	---	C, A	
Four Zone	18	18	12	---	D
	7	7	7	7	E
	9	7	7	7	E
	9	9	7	7	E
	12	7	7	7	E
	9	9	9	7	E
	12	9	7	7	E
	9	9	9	9	E
	12	9	9	7	E
	12	12	7	7	E
	12	9	9	9	E
	18	7	7	7	-
	12	12	9	7	E
	18	9	7	7	-
	12	12	9	9	E
	12	12	12	7	E
	18	9	9	7	-
	18	12	7	7	-
24	7	7	7	C, A	
12	12	12	9	E	
24	9	7	7	C, A	
12	12	12	12	E	
18	12	9	9	-	



MULTILINK SERIES SUBMITTAL

18000 BTU/HR INVERTER DRIVEN MULTI-ZONE HEAT PUMP SYSTEM ASH218JCDDA

Job Name: _____
 Purchaser: _____
 Submitted To: _____
 Construction: _____
 Reference: _____

Approval: _____
 Date: _____
 Submitted By: _____
 Unit: _____
 Drawing #: _____



Accessories

Wind Baffle

Uses wind baffle QAWB47A
 Back/Side Wind Baffle (Snow Hood): UAWB84A

Electrical Requirement	
Power Supply	208/230V, 1 Phase, 60 HZ
Operating Voltage Range	187~253 VAC
Recommended Fuse/Breaker Size	30A
MCA	19A

Connecting cable to indoor units must be 14/4 AWG unshielded stranded copper. Cable must be ran continuous, without splicing.

Operating Range	
Cooling with Baffle	14~115°F (-10~46°C)
Cooling without Baffle	23~115°F (-5~46°C)
Heating	-4~75°F (-20~24°C)

Heating Performance	
Heating Capacity Range (Non-Ducted/Ducted)	2,300-20,000 BTU/ 3,200-19,100 BTU
HSPF (Non-Ducted/Ducted)	11.0/9.4

Cooling Performance	
Cooling Capacity Range (Non-Ducted/Ducted)	5,000-19,500 BTU/ 4,600-19,000 BTU
Rated Power Input (Non-Ducted/Ducted)	1,440/1,565 W
SEER (Non-Ducted/Ducted)	20.0/18.0
EER (Non-Ducted/Ducted)	12.5/11.5

Pipe Length	
Minimum Pipe Length (Each)	10 ft
Maximum Pipe Length (Each/All)	65 ft /98 ft
Pre-Charged	50 ft
Additional Charge	0.2 oz/ft
Maximum Pipe Height Difference	10 ft
Flare Connections	1/4", 1/4"(Liquid) 3/8", 3/8" (Vapor)

Outdoor Unit	
Compressor	DC inverter Driven Rotary
Uncrated Dimension (HxWxD)	27 5/8 x 35 x 13 1/2 in (700 x 890 x 340 mm)
Crated (HxWxD)	31 1/8 x 39 3/8 x 17 1/2 in (790 x 998 x 443 mm)
Outdoor Sound Rating dB	51
Heat Exchanger Fin Type	Blue Fin
Weight (Ship/Net)	115/130 lbs
Factory Refrigerant Charge	R-410A (60.0 oz)



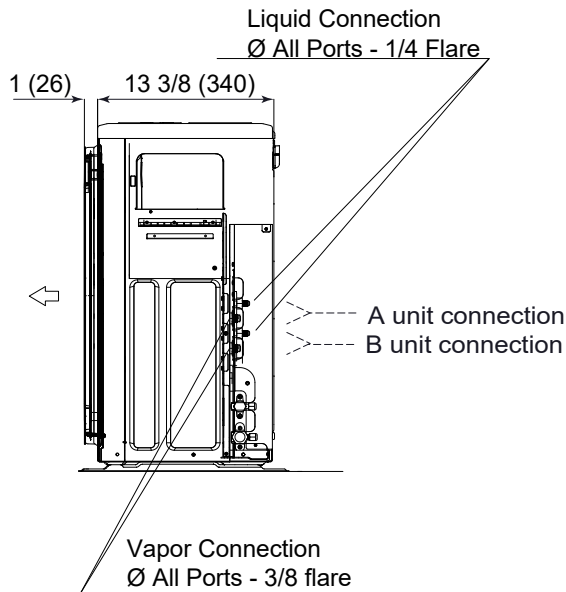
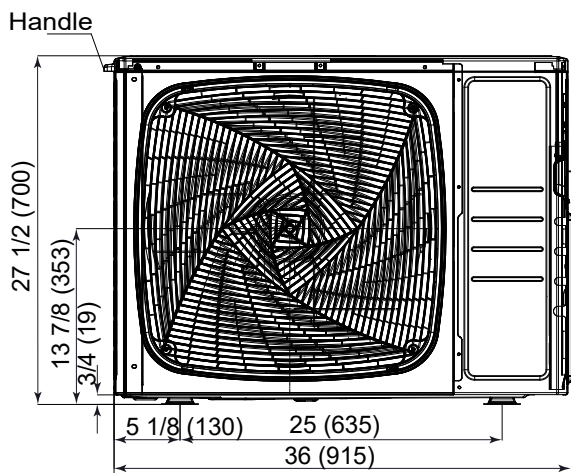
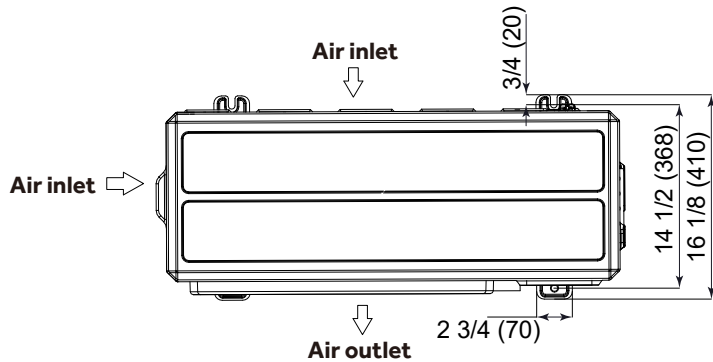
For more information visit us:
www.geappliances.com/ductless





MULTILINK SERIES SUBMITTAL

18000 BTU/HR INVERTER DRIVEN MULTI-ZONE HEAT PUMP SYSTEM ASH218JCDDA





MULTILINK SERIES SUBMITTAL

18000 BTU/HR INVERTER DRIVEN MULTI-ZONE HEAT PUMP SYSTEM ASH218JCDDA

Heating Capacity Data - Non Ducted

Outdoor Air Temp DB	Indoor Set Temperature								
	60°F (16°C)			70°F (21°C)			77°F (25°C)		
	Maximum Heating Capacity (Btu/h)	Power Usage (w)	COP	Max Heating Capacity (Btu/h)	Power Usage (w)	COP	Max Heating Capacity (Btu/h)	Power Usage (w)	COP
-4°F (-20°C)	11,970	1,935	1.81	11,400	1,910	1.75	10,830	1,885	1.68
5°F (-15°C)	14,385	2,255	1.87	13,700	2,230	1.80	13,015	2,205	1.73
17°F (-8°C)	15,960	1,725	2.71	15,200	1,700	2.62	14,440	1,675	2.53
47°F (8°C)	25,200	2,535	2.91	24,000	2,510	2.80	22,800	2,485	2.69

Heating Capacity Data - Ducted

Outdoor Air Temp DB	Indoor Set Temperature								
	60°F (16°C)			70°F (21°C)			77°F (25°C)		
	Maximum Heating Capacity (Btu/h)	Power Usage (w)	COP	Max Heating Capacity (Btu/h)	Power Usage (w)	COP	Max Heating Capacity (Btu/h)	Power Usage (w)	COP
-4°F (-20°C)	9,660	1,775	1.60	9,200	1,750	1.54	8,740	1,725	1.48
5°F (-15°C)	11,550	2,035	1.66	11,000	2,010	1.60	10,450	1,985	1.54
17°F (-8°C)	15,960	2,085	2.24	15,200	2,060	2.16	14,440	2,035	2.08
47°F (8°C)	23,940	2,285	3.07	22,800	2,260	2.96	21,660	2,235	2.84

Capacity and power usage are measured under the assumption of indoor humidity of 46%

Cooling Capacity Data - Non Ducted

Outdoor Air Temp DB	Indoor Set Temperature								
	70°F (21°C)			75°F (24°C)			80°F (27°C)		
	Maximum Cooling Capacity (Btu/h)	Power Usage (w)	EER	Maximum Cooling Capacity (Btu/h)	Power Usage (w)	EER	Maximum Cooling Capacity (Btu/h)	Power Usage (w)	EER
14°F (-10°C)	20,734	1,799	3.38	21,279	1,817	3.43	21,825	1,836	3.48
23°F (-5°C)	21,157	1,821	3.41	21,713	1,839	3.46	22,270	1,858	3.51
32°F (0°C)	21,588	1,842	3.43	22,156	1,860	3.49	22,724	1,879	3.54
50°F (10°C)	22,029	1,863	3.47	22,608	1,881	3.52	23,188	1,901	3.57
65°F (18°C)	23,188	1,926	3.53	23,798	1,946	3.58	24,408	1,966	3.64
75°F (24°C)	22,982	1,990	3.38	23,587	2,010	3.44	24,192	2,030	3.49
85°F (29°C)	22,572	2,053	3.22	23,166	2,074	3.27	23,760	2,095	3.32
95°F (35°C)	20,520	2,117	2.84	21,060	2,138	2.89	21,600	2,160	2.93
105°F (41°C)	18,468	2,329	2.32	18,954	2,352	2.36	19,440	2,376	2.40
115°F (46°C)	15,390	2,223	2.03	15,795	2,245	2.06	16,200	2,268	2.09

Cooling Capacity Data - Ducted

Outdoor Air Temp DB	Indoor Set Temperature								
	70°F (21°C)			75°F (24°C)			80°F (27°C)		
	Maximum Cooling Capacity (Btu/h)	Power Usage (w)	EER	Maximum Cooling Capacity (Btu/h)	Power Usage (w)	EER	Maximum Cooling Capacity (Btu/h)	Power Usage (w)	EER
14°F (-10°C)	20,734	1,949	3.12	21,279	1,969	3.17	21,825	1,989	3.22
23°F (-5°C)	21,157	1,972	3.14	21,713	1,993	3.19	22,270	2,012	3.24
32°F (0°C)	21,588	1,995	3.17	22,156	2,016	3.22	22,724	2,036	3.27
50°F (10°C)	22,029	2,018	3.20	22,608	2,039	3.25	23,188	2,059	3.30
65°F (18°C)	23,188	2,087	3.26	23,798	2,108	3.31	24,408	2,129	3.36
75°F (24°C)	22,982	2,155	3.13	23,587	2,178	3.17	24,192	2,200	3.22
85°F (29°C)	22,572	2,224	2.97	23,166	2,247	3.02	23,760	2,270	3.07
95°F (35°C)	20,520	2,293	2.62	21,060	2,317	2.66	21,600	2,340	2.70
105°F (41°C)	18,468	2,522	2.15	18,954	2,549	2.18	19,440	2,574	2.21
115°F (46°C)	15,390	2,408	1.87	15,795	2,433	1.90	16,200	2,457	1.93

Capacity and power usage are measured under the assumption of indoor humidity of 46%



MULTILINK SERIES SUBMITTAL

24000 BTU/HR INVERTER DRIVEN MULTI-ZONE HEAT PUMP SYSTEM ASH324JCDDA

Job Name: _____
 Purchaser: _____
 Submitted To: _____
 Construction: _____
 Reference: _____

Approval: _____
 Date: _____
 Submitted By: _____
 Unit: _____
 Drawing #: _____



Accessories

Wind Baffle

Uses wind baffle QAWB47A
 Back/Side Wind Baffle (Snow Hood): UAWB84A

Electrical Requirement	
Power Supply	208/230V, 1 Phase, 60 HZ
Operating Voltage Range	187-253 VAC
Recommended Fuse/Breaker Size	30A
MCA	22A

Connecting cable to indoor units must be 14/4 AWG unshielded stranded copper. Cable must be ran continuous, without splicing.

Operating Range	
Cooling with Baffle	14~115°F (-10~46°C)
Cooling without Baffle	23~115°F (-5~46°C)
Heating	-4~75°F (-20~24°C)

Heating Performance	
Heating Capacity Range (Non-Ducted/Ducted)	3,200-25,000 BTU/ 3,800-25,500 BTU
HSPF (Non-Ducted/Ducted)	10.5/9.0

Cooling Performance	
Cooling Capacity Range (Non-Ducted/Ducted)	5,000~24,500 BTU/ 5,000~24,500 BTU
Rated Power Input (Non-Ducted/Ducted)	1,800/2,000 W
SEER (Non-Ducted/Ducted)	21.0/16.0
EER (Non-Ducted/Ducted)	12.5/11.0

Pipe Length	
Minimum Pipe Length (Each)	10 ft
Maximum Pipe Length (Each/All)	82 ft /197 ft
Pre-Charged	100 ft
Additional Charge	0.2 oz/ft
Maximum Pipe Height Difference	50 ft
Flare Connections	1/4", 1/4", 1/4" (Liquid) 3/8", 3/8", 3/8" (Vapor)

Outdoor Unit	
Compressor	DC inverter Driven Rotary
Uncrated Dimension (HxWxD)	27 5/8 x 35 1/2 x 13 5/8 in (700 x 900 x 346 mm)
Crated (HxWxD)	31 1/8 x 39 3/8 x 17 1/2 in (790 x 998 x 443 mm)
Outdoor Sound Rating dB	53
Heat Exchanger Fin Type	Blue Fin
Weight (Ship/Net)	132/117 lbs
Factory Refrigerant Charge	R-410A (67.0 oz)



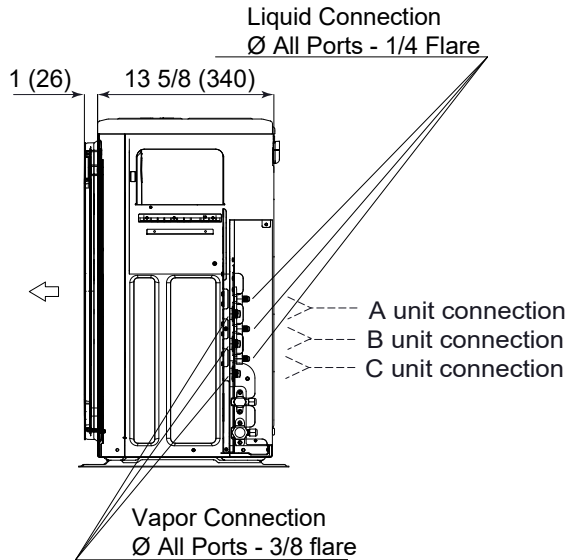
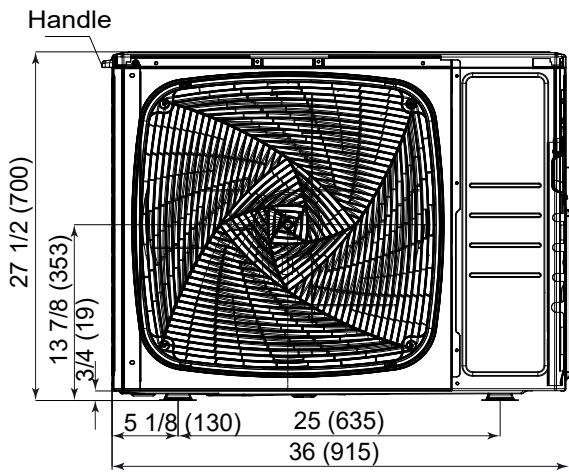
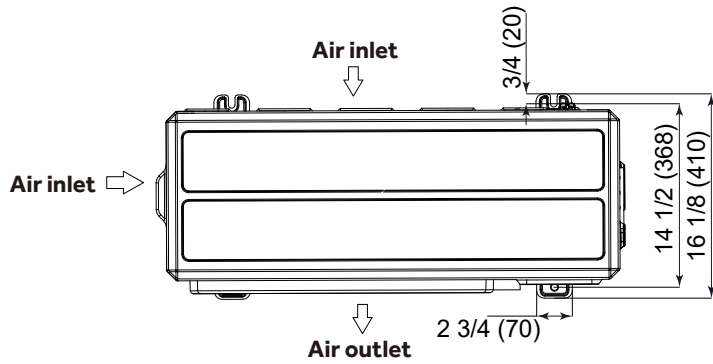
For more information visit us:
www.geappliances.com/ductless





MULTILINK SERIES SUBMITTAL

24000 BTU/HR INVERTER DRIVEN MULTI-ZONE HEAT PUMP SYSTEM
ASH324JCDDA





MULTILINK SERIES SUBMITTAL

24000 BTU/HR INVERTER DRIVEN MULTI-ZONE HEAT PUMP SYSTEM ASH324JCDDA

Heating Capacity Data - Non Ducted

Outdoor Air Temp DB	Indoor Set Temperature								
	60°F (16°C)			70°F (21°C)			77°F (25°C)		
	Maximum Heating Capacity (Btu/h)	Power Usage (w)	COP	Max Heating Capacity (Btu/h)	Power Usage (w)	COP	Max Heating Capacity (Btu/h)	Power Usage (w)	COP
-4°F (-20°C)	12,600	2,095	1.76	12,000	2,070	1.70	11,400	2,045	1.63
5°F (-15°C)	14,595	2,065	2.07	13,900	2,040	2.00	13,205	2,015	1.92
17°F (-8°C)	21,000	2,595	2.37	20,000	2,570	2.28	19,000	2,545	2.19
47°F (8°C)	31,500	2,845	3.25	30,000	2,820	3.12	28,500	2,795	2.99

Heating Capacity Data - Ducted

Outdoor Air Temp DB	Indoor Set Temperature								
	60°F (16°C)			70°F (21°C)			77°F (25°C)		
	Maximum Heating Capacity (Btu/h)	Power Usage (w)	COP	Max Heating Capacity (Btu/h)	Power Usage (w)	COP	Max Heating Capacity (Btu/h)	Power Usage (w)	COP
-4°F (-20°C)	11,550	2,115	1.60	11,000	2,090	1.54	10,450	2,065	1.48
5°F (-15°C)	12,600	1,805	2.05	12,000	1,780	1.98	11,400	1,755	1.90
17°F (-8°C)	21,000	2,775	2.22	20,000	2,750	2.13	19,000	2,725	2.04
47°F (8°C)	31,500	3,075	3.00	30,000	3,050	2.88	28,500	3,025	2.76

Capacity and power usage are measured under the assumption of indoor humidity of 46%

Cooling Capacity Data - Non Ducted

Outdoor Air Temp DB	Indoor Set Temperature								
	70°F (21°C)			75°F (24°C)			80°F (27°C)		
	Maximum Cooling Capacity (Btu/h)	Power Usage (w)	EER	Maximum Cooling Capacity (Btu/h)	Power Usage (w)	EER	Maximum Cooling Capacity (Btu/h)	Power Usage (w)	EER
14°F (-10°C)	25,800	2,241	3.37	26,479	2,264	3.43	27,158	2,287	3.48
23°F (-5°C)	26,326	2,267	3.40	27,019	2,290	3.46	27,712	2,313	3.51
32°F (0°C)	26,864	2,293	3.43	27,571	2,317	3.49	28,278	2,340	3.54
50°F (10°C)	27,412	2,320	3.46	28,134	2,343	3.52	28,855	2,367	3.57
65°F (18°C)	28,855	2,399	3.53	29,615	2,423	3.58	30,374	2,448	3.64
75°F (24°C)	28,601	2,478	3.38	29,353	2,503	3.44	30,106	2,529	3.49
85°F (29°C)	28,090	2,557	3.22	28,829	2,583	3.27	29,568	2,609	3.32
95°F (35°C)	25,536	2,636	2.84	26,208	2,663	2.88	26,880	2,690	2.93
105°F (41°C)	22,982	2,900	2.32	23,587	2,929	2.36	24,192	2,959	2.40
115°F (46°C)	19,152	2,768	2.03	19,656	2,796	2.06	20,160	2,825	2.09

Cooling Capacity Data - Ducted

Outdoor Air Temp DB	Indoor Set Temperature								
	70°F (21°C)			75°F (24°C)			80°F (27°C)		
	Maximum Cooling Capacity (Btu/h)	Power Usage (w)	EER	Maximum Cooling Capacity (Btu/h)	Power Usage (w)	EER	Maximum Cooling Capacity (Btu/h)	Power Usage (w)	EER
14°F (-10°C)	25,340	2,499	2.97	26,007	2,525	3.02	26,674	2,550	3.07
23°F (-5°C)	25,857	2,528	3.00	26,538	2,554	3.05	27,218	2,580	3.09
32°F (0°C)	26,384	2,558	3.02	27,079	2,584	3.07	27,773	2,610	3.12
50°F (10°C)	26,923	2,587	3.05	27,632	2,614	3.10	28,340	2,640	3.15
65°F (18°C)	28,340	2,675	3.11	29,086	2,703	3.15	29,832	2,730	3.20
75°F (24°C)	28,090	2,764	2.98	28,829	2,792	3.03	29,568	2,820	3.07
85°F (29°C)	27,588	2,852	2.84	28,314	2,881	2.88	29,040	2,910	2.92
95°F (35°C)	25,080	2,940	2.50	25,740	2,970	2.54	26,400	3,000	2.58
105°F (41°C)	22,572	3,234	2.05	23,166	3,267	2.08	23,760	3,300	2.11
115°F (46°C)	18,810	3,087	1.79	19,305	3,119	1.81	19,800	3,150	1.84

Capacity and power usage are measured under the assumption of indoor humidity of 46%



MULTILINK SERIES SUBMITTAL

36000 BTU/HR INVERTER DRIVEN MULTI-ZONE HEAT PUMP SYSTEM ASH436JCDDA

Job Name: _____
 Purchaser: _____
 Submitted To: _____
 Construction: _____
 Reference: _____

Approval: _____
 Date: _____
 Submitted By: _____
 Unit: _____
 Drawing #: _____



Accessories

Wind Baffle

Uses wind baffle QAWB46A
 Back/Side Wind Baffle (Snow Hood): UAWB80A

When FlexFit series 24k indoor matches with the ASH436JCDDA, two adapters are required and need to be purchased separately from GE parts:
 1/4" to 3/8" Part Number: WJ01X23925
 3/8" to 5/8" Part Number: WJ01X23924
 1/2" to 5/8" Part Number: WJ01X23932

Electrical Requirement	
Power Supply	208/230V, 1 Phase, 60 HZ
Operating Voltage Range	187~253 VAC
Recommended Fuse/Breaker Size	30A
MCA	26A

Connecting cable to indoor units must be 14/4 AWG unshielded stranded copper. Cable must be ran continuous, without splicing.

Operating Range	
Cooling with Baffle	14~115°F (-10~46°C)
Cooling without Baffle	23~115°F (-5~46°C)
Heating	-4~75°F (-20~24°C)

Heating Performance	
Heating Capacity Range (Non-Ducted/Ducted)	7,000-36,000 BTU/ 6,500-36,500 BTU
HSPF (Non-Ducted/Ducted)	10.5/9.3

Cooling Performance	
Cooling Capacity Range (Non-Ducted/Ducted)	10,000-36,000 BTU/ 10,000-36,000 BTU
Rated Power Input (Non-Ducted/Ducted)	3,680/3,800 W
SEER (Non-Ducted/Ducted)	18.0/15.6
EER (Non-Ducted/Ducted)	9.0/8.8

Pipe Length	
Minimum Pipe Length (Each)	10 ft
Maximum Pipe Length (Each/All)	82 ft /230 ft
Pre-Charged	131 ft
Additional Charge	0.2 oz/ft
Maximum Pipe Height Difference	50 ft
Flare Connections	1/4", 1/4", 1/4", 1/4" (Liquid) 3/8", 3/8", 3/8", 1/2" (Vapor)

Outdoor Unit	
Compressor	DC inverter Driven Rotary
Uncrated Dimension (HxWxD)	33 1/8 x 37 3/8 x 13 1/2 in (840 x 948 x 340 mm)
Crated (HxWxD)	41 3/8 x 41 3/4 x 16 1/2 in (1048 x 1060 x 420 mm)
Outdoor Sound Rating dB	58
Heat Exchanger Fin Type	Blue Fin
Weight (Ship/Net)	191.6/157.8 lbs
Factory Refrigerant Charge	R-410A (90.0 oz)



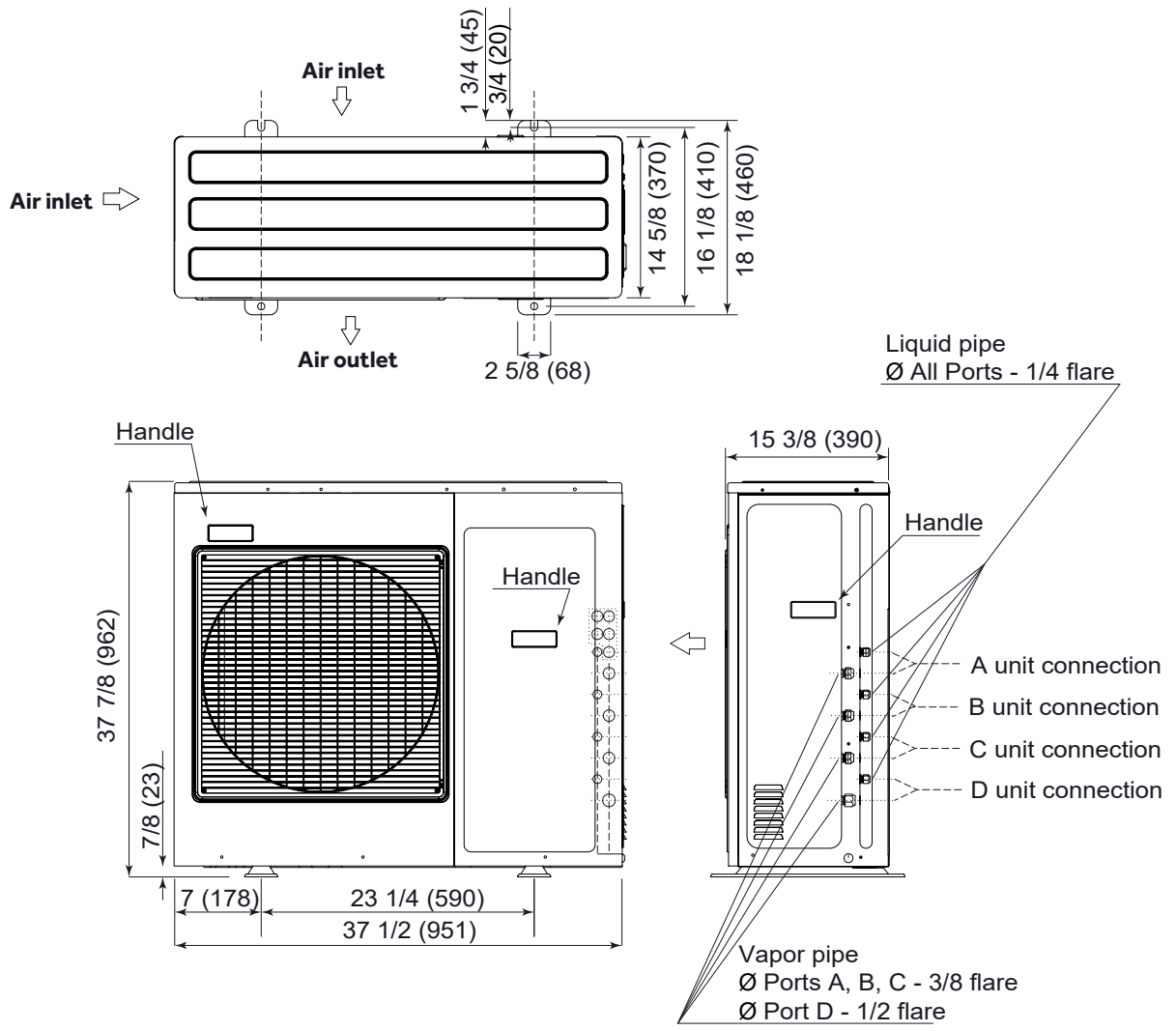
For more information visit us:
www.geappliances.com/ductless





MULTILINK SERIES SUBMITTAL

36000 BTU/HR INVERTER DRIVEN MULTI-ZONE HEAT PUMP SYSTEM ASH436JCDDA





MULTILINK SERIES SUBMITTAL

36000 BTU/HR INVERTER DRIVEN MULTI-ZONE HEAT PUMP SYSTEM ASH436JCDDA

Heating Capacity Data - Non Ducted

Outdoor Air Temp DB	Indoor Set Temperature								
	60°F (16°C)			70°F (21°C)			77°F (25°C)		
	Maximum Heating Capacity (Btu/h)	Power Usage (w)	COP	Max Heating Capacity (Btu/h)	Power Usage (w)	COP	Max Heating Capacity (Btu/h)	Power Usage (w)	COP
-4°F (-20°C)	18,900	3,125	1.77	18,000	3,100	1.70	17,100	3,075	1.63
5°F (-15°C)	23,100	3,705	1.83	22,000	3,680	1.75	20,900	3,655	1.68
17°F (-8°C)	31,500	4,725	1.95	30,000	4,700	1.87	28,500	4,675	1.79
47°F (8°C)	45,360	4,825	2.76	43,200	4,800	2.64	41,040	4,775	2.52

Heating Capacity Data - Ducted

Outdoor Air Temp DB	Indoor Set Temperature								
	60°F (16°C)			70°F (21°C)			77°F (25°C)		
	Maximum Heating Capacity (Btu/h)	Power Usage (w)	COP	Max Heating Capacity (Btu/h)	Power Usage (w)	COP	Max Heating Capacity (Btu/h)	Power Usage (w)	COP
-4°F (-20°C)	17,850	3,305	1.58	17,000	3,280	1.52	16,150	3,255	1.45
5°F (-15°C)	22,050	3,445	1.88	21,000	3,420	1.80	19,950	3,395	1.72
17°F (-8°C)	33,600	5,205	1.89	32,000	5,180	1.81	30,400	5,155	1.73
47°F (8°C)	45,360	5,305	2.51	43,200	5,280	2.40	41,040	5,255	2.29

Capacity and power usage are measured under the assumption of indoor humidity of 46%

Cooling Capacity Data - Non Ducted

Outdoor Air Temp DB	Indoor Set Temperature								
	70°F (21°C)			75°F (24°C)			80°F (27°C)		
	Maximum Cooling Capacity (Btu/h)	Power Usage (w)	EER	Maximum Cooling Capacity (Btu/h)	Power Usage (w)	EER	Maximum Cooling Capacity (Btu/h)	Power Usage (w)	EER
14°F (-10°C)	39,163	4,723	2.43	40,193	4,771	2.47	41,224	4,820	2.51
23°F (-5°C)	39,962	4,779	2.45	41,013	4,827	2.49	42,065	4,876	2.53
32°F (0°C)	40,777	4,835	2.47	41,850	4,883	2.51	42,923	4,933	2.55
50°F (10°C)	41,609	4,890	2.49	42,704	4,939	2.53	43,799	4,990	2.57
65°F (18°C)	43,799	5,057	2.54	44,951	5,108	2.58	46,104	5,160	2.62
75°F (24°C)	43,411	5,224	2.44	44,554	5,276	2.47	45,696	5,330	2.51
85°F (29°C)	42,636	5,390	2.32	43,758	5,445	2.36	44,880	5,500	2.39
95°F (35°C)	38,760	5,557	2.04	39,780	5,613	2.08	40,800	5,670	2.11
105°F (41°C)	29,070	6,113	1.39	29,835	6,174	1.42	30,600	5,954	1.51
115°F (46°C)	20,969	5,835	1.05	21,521	5,894	1.07	22,073	6,010	1.08

Cooling Capacity Data - Ducted

Outdoor Air Temp DB	Indoor Set Temperature								
	70°F (21°C)			75°F (24°C)			80°F (27°C)		
	Maximum Cooling Capacity (Btu/h)	Power Usage (w)	EER	Maximum Cooling Capacity (Btu/h)	Power Usage (w)	EER	Maximum Cooling Capacity (Btu/h)	Power Usage (w)	EER
14°F (-10°C)	39,163	4,831	2.38	40,193	4,881	2.41	41,224	4,930	2.45
23°F (-5°C)	39,962	4,888	2.40	41,013	4,938	2.43	42,065	4,988	2.47
32°F (0°C)	40,777	4,945	2.42	41,850	4,996	2.46	42,923	5,046	2.49
50°F (10°C)	41,609	5,002	2.44	42,704	5,053	2.48	43,799	5,104	2.52
65°F (18°C)	43,799	5,172	2.48	44,951	5,225	2.52	46,104	5,278	2.56
75°F (24°C)	43,411	5,343	2.38	44,554	5,397	2.42	45,696	5,452	2.46
85°F (29°C)	42,636	5,513	2.27	43,758	5,570	2.30	44,880	5,626	2.34
95°F (35°C)	38,760	5,684	2.00	39,780	5,742	2.03	40,800	5,800	2.06
105°F (41°C)	29,070	6,252	1.36	29,835	6,316	1.38	30,600	6,380	1.41
115°F (46°C)	21,851	5,968	1.07	22,426	6,029	1.09	23,001	6,090	1.11

Capacity and power usage are measured under the assumption of indoor humidity of 46%



MULTILINK SERIES SUBMITTAL

7,000 BTU/HR WALL MOUNTED INVERTER DRIVEN HEAT PUMP SYSTEM ASYW07CRDDA

Job Name: _____
 Purchaser: _____
 Submitted To: _____
 Construction: _____
 Reference: _____

Approval: _____
 Date: _____
 Submitted By: _____
 Unit: _____
 Drawing #: _____

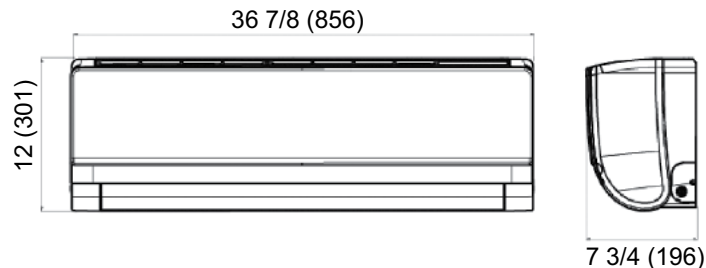


Electrical Requirement	
Power Supply	208/230V, 1 Phase, 60 HZ
Operating Voltage Range	187-253 VAC

Performance	
Rated Cooling Capacity	7,000 BTU
Rated Heating Capacity	8,000 BTU

Piping	
Flare Connections	1/4" (Liquid) 3/8" (Vapor)

Indoor Unit	
Uncrated Dimension (HxWxD)	12 x 33 3/4 x 7 3/4 in (301 x 856 x 196 mm)
Crated (HxWxD)	14 3/4 x 36 7/8 x 10 1/2 in (374 x 937 x 265 mm)
Airflow CFM (Turbo/High/Med/Low/Quiet)	400/315/274/222/187
Indoor Sound Level dB (Turbo/High/Med/Low/Quiet)	42/36/33/29/26
Motor Rating (HP)	0.04
Heat Exchanger Fin Type	Blue Fin
Weight (Ship/Net)	26.9/21.2 lbs



Accessories

Remote Controller

Ships with Standard Remote Control (YR-HG)

Compatible Wired Controllers (no adapter required)

Simplified Wired Controller (ACT17CWA)

Built-in WiFi





MULTILINK SERIES SUBMITTAL

9,000 BTU/HR WALL MOUNTED INVERTER DRIVEN HEAT PUMP SYSTEM ASYW09CRDDA

Job Name: _____
 Purchaser: _____
 Submitted To: _____
 Construction: _____
 Reference: _____

Approval: _____
 Date: _____
 Submitted By: _____
 Unit: _____
 Drawing #: _____



Electrical Requirement	
Power Supply	208/230V, 1 Phase, 60 HZ
Operating Voltage Range	187-253 VAC

Performance	
Rated Cooling Capacity	9,000 BTU
Rated Heating Capacity	10,000 BTU

Piping	
Flare Connections	1/4" (Liquid) 3/8" (Vapor)

Indoor Unit	
Uncrated Dimension (HxWxD)	12 x 33 3/4 x 7 3/4 in (301 x 856 x 196 mm)
Crated (HxWxD)	14 3/4 x 36 7/8 x 10 1/2 in (374 x 937 x 265 mm)
Airflow CFM (Turbo/High/Med/Low/Quiet)	421/332/292/242/200
Indoor Sound Level dB (Turbo/High/Med/Low/Quiet)	42/36/33/29/26
Motor Rating (HP)	0.04
Heat Exchanger Fin Type	Blue Fin
Weight (Ship/Net)	26.9/21.2 lbs



Accessories

Remote Controller

Ships with Standard Remote Control (YR-HG)

Compatible Wired Controllers (no adapter required)

Simplified Wired Controller (ACT17CWA)

Built-in WiFi





MULTILINK SERIES SUBMITTAL

12,000 BTU/HR WALL MOUNTED INVERTER DRIVEN HEAT PUMP SYSTEM ASYW12CRDDA

Job Name: _____
 Purchaser: _____
 Submitted To: _____
 Construction: _____
 Reference: _____

Approval: _____
 Date: _____
 Submitted By: _____
 Unit: _____
 Drawing #: _____



Electrical Requirement	
Power Supply	208/230V, 1 Phase, 60 HZ
Operating Voltage Range	187-253 VAC

Performance	
Rated Cooling Capacity	12,000 BTU
Rated Heating Capacity	13,000 BTU

Piping	
Flare Connections	1/4" (Liquid) 3/8" (Vapor)

Indoor Unit	
Uncrated Dimension (HxWxD)	12 x 33 3/4 x 7 3/4 in (301 x 856 x 196 mm)
Crated (HxWxD)	14 3/4 x 36 7/8 x 10 1/2 in (374 x 937 x 265 mm)
Airflow CFM (Turbo/High/Med/Low/Quiet)	426/360/310/265/200
Indoor Sound Level dB (Turbo/High/Med/Low/Quiet)	42/38/34/31/26
Motor Rating (HP)	0.04
Heat Exchanger Fin Type	Blue Fin
Weight (Ship/Net)	26.9/21.2 lbs



Accessories

Remote Controller

Ships with Standard Remote Control (YR-HG)

Compatible Wired Controllers (no adapter required)

Simplified Wired Controller (ACT17CWA)

Built-in WiFi





MULTILINK SERIES SUBMITTAL

18,000 BTU/HR WALL MOUNTED INVERTER DRIVEN HEAT PUMP SYSTEM ASYW18CRDDA

Job Name: _____
 Purchaser: _____
 Submitted To: _____
 Construction: _____
 Reference: _____

Approval: _____
 Date: _____
 Submitted By: _____
 Unit: _____
 Drawing #: _____

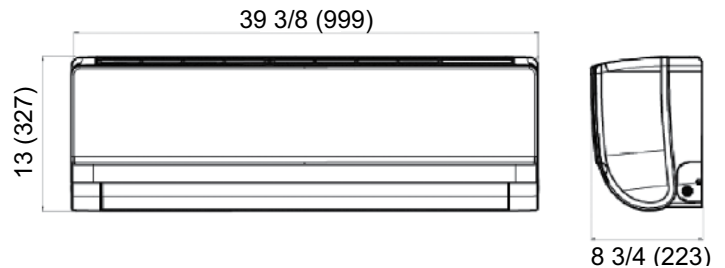


Electrical Requirement	
Power Supply	208/230V, 1 Phase, 60 HZ
Operating Voltage Range	187-253 VAC

Performance	
Rated Cooling Capacity	18,000 BTU
Rated Heating Capacity	19,000 BTU

Piping	
Flare Connections	1/4" (Liquid) 1/2" (Vapor)

Indoor Unit	
Uncrated Dimension (HxWxD)	13 x 39 3/8 x 8 3/4 in (327 x 999 x 223 mm)
Crated (HxWxD)	16 1/2 x 43 3/8 x 12 3/8 in (420 x 1100 x 313 mm)
Airflow CFM (Turbo/High/Med/Low/Quiet)	596/532/478/422/340
Indoor Sound Level dB (Turbo/High/Med/Low/Quiet)	48/45/42/39/36
Motor Rating (HP)	0.054
Heat Exchanger Fin Type	Blue Fin
Weight (Ship/Net)	34.77/28.06 lbs



Accessories

Remote Controller

Ships with Standard Remote Control (YR-HG)

Compatible Wired Controllers (no adapter required)

Simplified Wired Controller (ACT17CWA)

Built-in WiFi





MULTILINK SERIES SUBMITTAL

24,000 BTU/HR WALL MOUNTED INVERTER DRIVEN HEAT PUMP SYSTEM ASYW24CRDDA

Job Name: _____
 Purchaser: _____
 Submitted To: _____
 Construction: _____
 Reference: _____

Approval: _____
 Date: _____
 Submitted By: _____
 Unit: _____
 Drawing #: _____

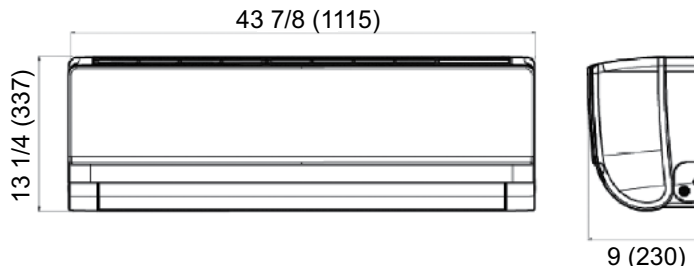


Electrical Requirement	
Power Supply	208/230V, 1 Phase, 60 HZ
Operating Voltage Range	187-253 VAC

Performance	
Rated Cooling Capacity	22,000 BTU
Rated Heating Capacity	24,000 BTU

Piping	
Flare Connections	1/4" (Liquid) 1/2" (Vapor)

Indoor Unit	
Uncrated Dimension (HxWxD)	13 1/4 x 43 7/8 x 9 in (337 x 1115 x 230 mm)
Crated (HxWxD)	17 x 47 3/8 x 12 5/8 in (432 x 1202 x 319 mm)
Airflow CFM (Turbo/High/Med/Low/Quiet)	846/744/668/592/482
Indoor Sound Level dB (Turbo/High/Med/Low/Quiet)	50/47/44/41/38
Motor Rating (HP)	0.094
Heat Exchanger Fin Type	Blue Fin
Weight (Ship/Net)	42.99/34.88 lbs



Accessories

Remote Controller

Ships with Standard Remote Control (YR-HG)

Compatible Wired Controllers (no adapter required)

Simplified Wired Controller (ACT17CWA)

Built-in WiFi





MULTILINK SERIES SUBMITTAL

9000 BTU/HR CASSETTE TYPE INDOOR AB09SC2VHA

Job Name: _____
 Purchaser: _____
 Submitted To: _____
 Construction: _____
 Reference: _____

Approval: _____
 Date: _____
 Submitted By: _____
 Unit: _____
 Drawing #: _____



Electrical Requirement	
Power Supply	208/230V, 1 Phase, 60 HZ
Operating Voltage Range	187-253 VAC

Performance	
Rated Cooling Capacity	9,000 BTU
Rated Heating Capacity	10,000 BTU

Piping	
Flare Connections	1/4" (Liquid) 3/8" (Vapor)

Indoor Unit	
Chassis Uncrated Dimension (HxWxD)	10 1/4 x 22 1/2 x 22 1/2 in (260 x 570 x 570 mm)
Chassis Crated (HxWxD)	15 x 28 1/4 x 26 3/4 in (380 x 718 x 680 mm)
Panel Uncrated Dimension (HxWxD)	2 3/8 x 27 1/2 x 27 1/2 in (60 x 700 x 700 mm)
Panel Crated (HxWxD)	4 1/2 x 29 1/8 x 29 1/2 in (115 x 740 x 750 mm)
Airflow CFM (Turbo/High/Med/Low/Quiet)	410/365/305/265/205
Indoor Sound Level dB (Turbo/High/Med/Low/Quiet)	42/40/36/32/25
Motor Rating (HP)	0.033
Heat Exchanger Fin Type	Blue Fin
Condensate Pump	Included - 47.2 in Lift
Weight (Ship/Net)	46.3/37.5 lbs

Accessories

Remote Controller

Ships with Standard Remote Control (YR-HG)

Compatible Wired Controllers

Simplified Wired Controller (ACT17CWA)

Panel

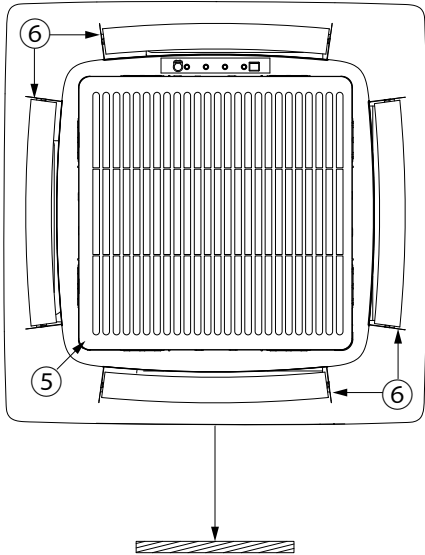
PB-700IB is required to complete the installation and it must be ordered separately.



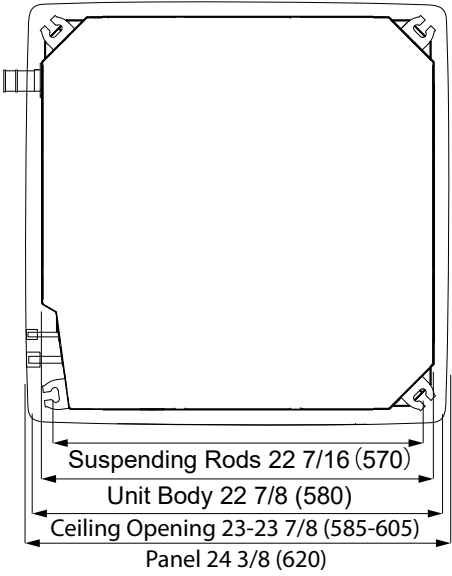


MULTILINK SERIES SUBMITTAL

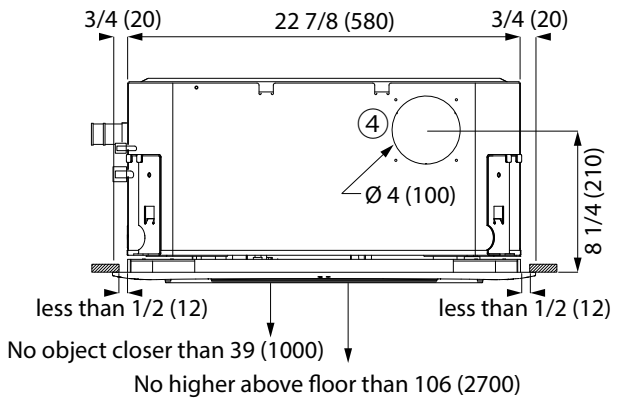
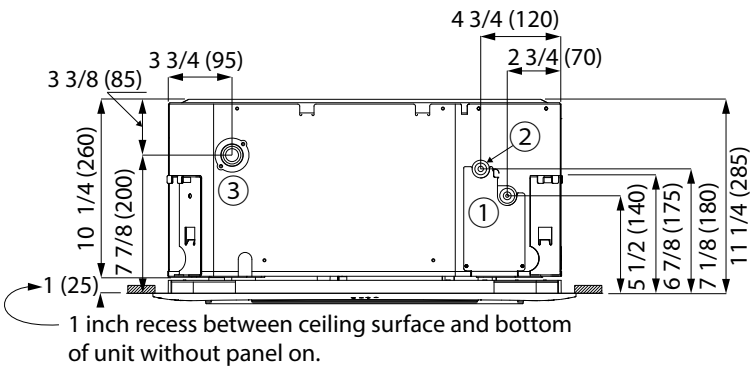
9000 BTU/HR CASSETTE TYPE INDOOR AB09SC2VHA



#	Part Name
1	Vapor Pipe
2	Liquid Pipe
3	Drain Pump Outlet
4	Fresh Air Inlet
5	Air Return Grille
6	Air Supply



More than 59 (1500) to wall on all sides





MULTILINK SERIES SUBMITTAL

12000 BTU/HR CASSETTE TYPE INDOOR AB12SC2VHA

Job Name: _____
 Purchaser: _____
 Submitted To: _____
 Construction: _____
 Reference: _____

Approval: _____
 Date: _____
 Submitted By: _____
 Unit: _____
 Drawing #: _____



Electrical Requirement	
Power Supply	208/230V, 1 Phase, 60 HZ
Operating Voltage Range	187~253 VAC

Performance	
Rated Cooling Capacity	12,000 BTU
Rated Heating Capacity	13,000 BTU

Piping	
Flare Connections	1/4" (Liquid) 3/8" (Vapor)

Indoor Unit	
Chassis Uncrated Dimension (HxWxD)	10 1/4 x 22 1/2 x 22 1/2 in (260 x 570 x 570 mm)
Chassis Crated (HxWxD)	15 x 28 1/4 x 26 3/4 in (380 x 718 x 680 mm)
Panel Uncrated Dimension (HxWxD)	2 3/8 x 27 1/2 x 27 1/2 in (60 x 700 x 700 mm)
Panel Crated (HxWxD)	4 1/2 x 29 1/8 x 29 1/2 in (115 x 740 x 750 mm)
Airflow CFM (Turbo/High/Med/Low/Quiet)	410/365/305/265/205
Indoor Sound Level dB (Turbo/High/Med/Low/Quiet)	42/40/36/32/25
Motor Rating (HP)	0.033
Heat Exchanger Fin Type	Blue Fin
Condensate Pump	Included - 47.2 in Lift
Weight (Ship/Net)	48.5/40.8 lbs

Accessories

Remote Controller

Ships with Standard Remote Control (YR-HG)

Compatible Wired Controllers

Simplified Wired Controller (ACT17CWA)

Panel

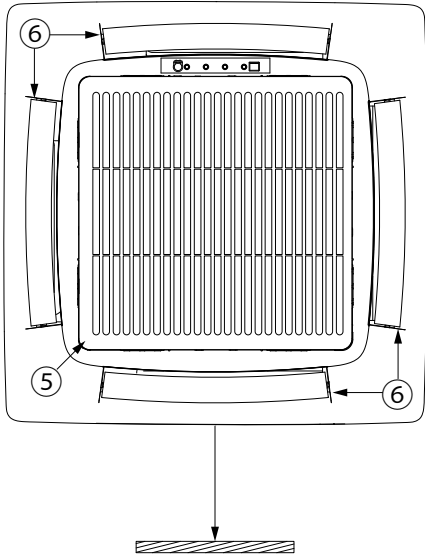
PB-700IB is required to complete the installation and it must be ordered separately.



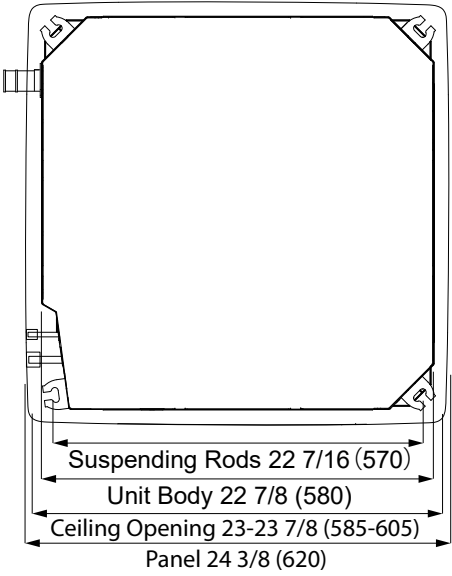


MULTILINK SERIES SUBMITTAL

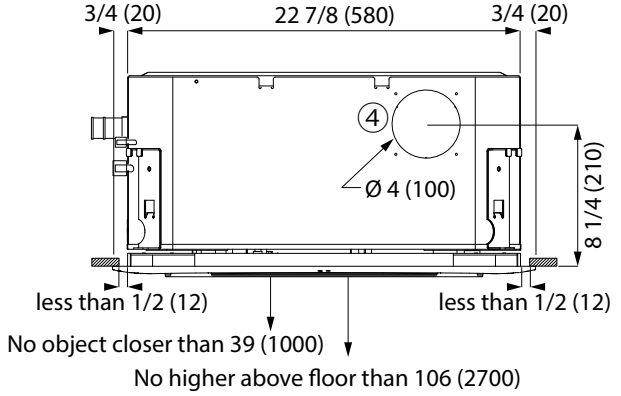
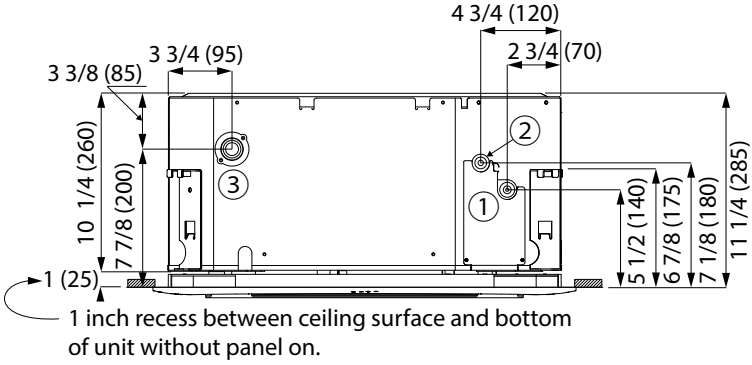
12000 BTU/HR CASSETTE TYPE INDOOR AB12SC2VHA



#	Part Name
1	Vapor Pipe
2	Liquid Pipe
3	Drain Pump Outlet
4	Fresh Air Inlet
5	Air Return Grille
6	Air Supply



More than 59 (1500) to wall on all sides





MULTILINK SERIES SUBMITTAL

18000 BTU/HR CASSETTE TYPE INDOOR AB18SC2VHA

Job Name: _____
 Purchaser: _____
 Submitted To: _____
 Construction: _____
 Reference: _____

Approval: _____
 Date: _____
 Submitted By: _____
 Unit: _____
 Drawing #: _____



Electrical Requirement	
Power Supply	208/230V, 1 Phase, 60 HZ
Operating Voltage Range	187-253 VAC

Performance	
Rated Cooling Capacity	18,000 BTU
Rated Heating Capacity	19,000 BTU

Piping	
Flare Connections	1/4" (Liquid) 1/2" (Vapor)

Indoor Unit	
Chassis Uncrated Dimension (HxWxD)	10 1/4 x 22 1/2 x 22 1/2 in (260 x 570 x 570 mm)
Chassis Crated (HxWxD)	15 x 28 1/4 x 26 3/4 in (380 x 718 x 680 mm)
Panel Uncrated Dimension (HxWxD)	2 3/8 x 27 1/2 x 27 1/2 in (60 x 700 x 700 mm)
Panel Crated (HxWxD)	4 1/2 x 29 1/8 x 29 1/2 in (115 x 740 x 750 mm)
Airflow CFM (Turbo/High/Med/Low/Quiet)	470/410/365/295/252
Indoor Sound Level dB (Turbo/High/Med/Low/Quiet)	45/42/40/36/32
Motor Rating (HP)	0.033
Heat Exchanger Fin Type	Blue Fin
Condensate Pump	Included - 47.2 in Lift
Weight (Ship/Net)	48.5/40.8 lbs

Accessories

Remote Controller

Ships with Standard Remote Control (YR-HG)

Compatible Wired Controllers

Simplified Wired Controller (ACT17CWA)

Panel

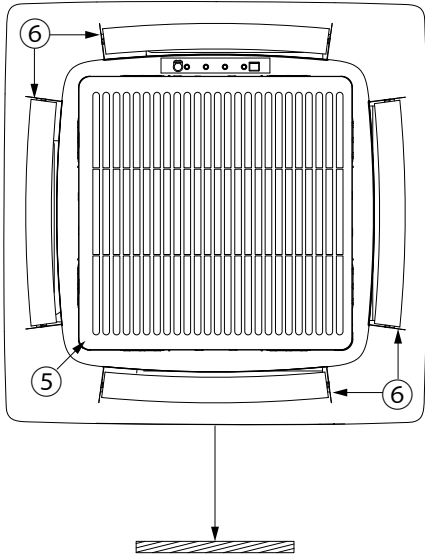
PB-700IB is required to complete the installation and it must be ordered separately.



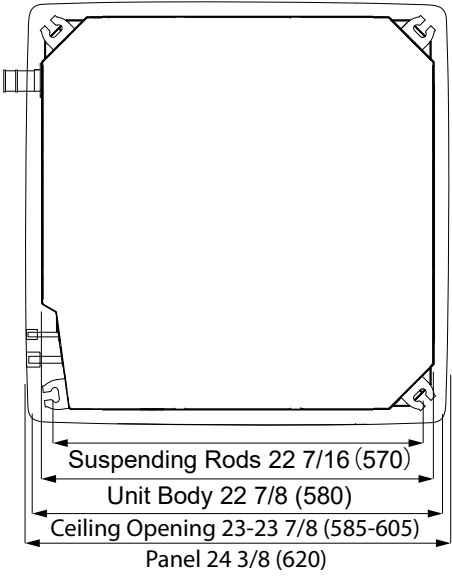


MULTILINK SERIES SUBMITTAL

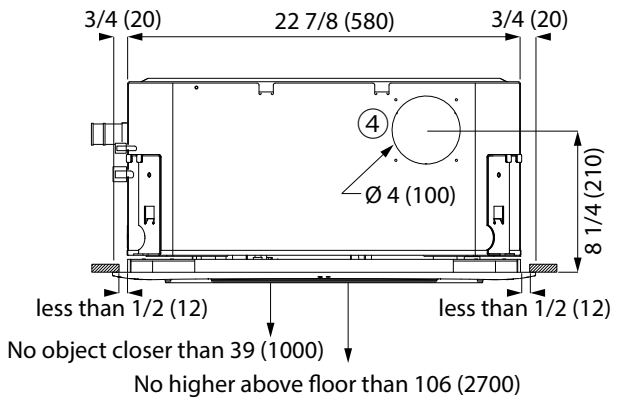
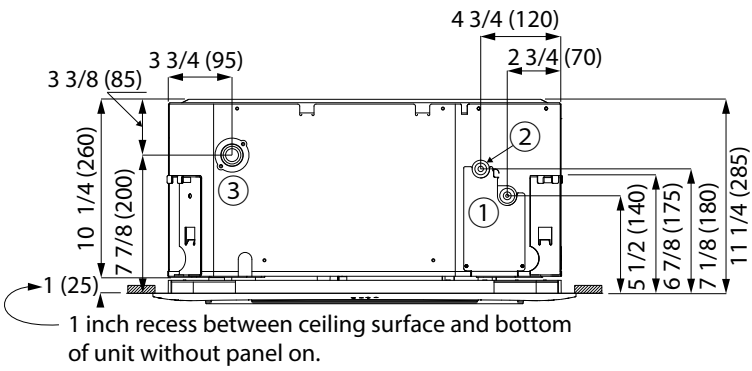
18000 BTU/HR CASSETTE TYPE INDOOR AB18SC2VHA



#	Part Name
1	Vapor Pipe
2	Liquid Pipe
3	Drain Pump Outlet
4	Fresh Air Inlet
5	Air Return Grille
6	Air Supply



More than 59 (1500) to wall on all sides





MULTILINK SERIES SUBMITTAL

9000 BTU/HR MID-STATIC DUCTED INDOOR USYM09UCDSA

Job Name: _____
 Purchaser: _____
 Submitted To: _____
 Construction: _____
 Reference: _____

Approval: _____
 Date: _____
 Submitted By: _____
 Unit: _____
 Drawing #: _____



Electrical Requirement	
Power Supply	208/230V, 1 Phase, 60 HZ
Operating Voltage Range	187-253 VAC

Performance	
Rated Cooling Capacity	9,000 BTU
Rated Heating Capacity	10,000 BTU

Piping	
Flare Connections	1/4" (Liquid) 3/8" (Vapor)
Drain Pipe	1 1/4"

Indoor Unit	
Uncrated Dimension (HxWxD)	9 3/4 x 27 1/2 x 27 1/2 in (248 x 700 x 700 mm)
Crated (HxWxD)	13 1/4 x 37 1/2 x 35 1/2 in (340 x 950 x 900 mm)
Maximum ESP (IWC)	0.6
Airflow CFM (Turbo/High/Med/Low)	494/423/352/264
Indoor Sound Level dB (Turbo/High/Med/Low)	35/32/29/26
Motor Rating (HP)	0.18
Heat Exchanger Fin Type	Blue Fin
Condensate Pump	Included - 39 in. Lift
Weight (Ship/Net)	57/66 lbs

Accessories

Wired Controller

Controller must be ordered separately

Compatible With

Simplified Wired Controller (ACT17CWA)

Built-in WiFi

Supply Plenum

UAPT0912A

Return MERV Filter Box

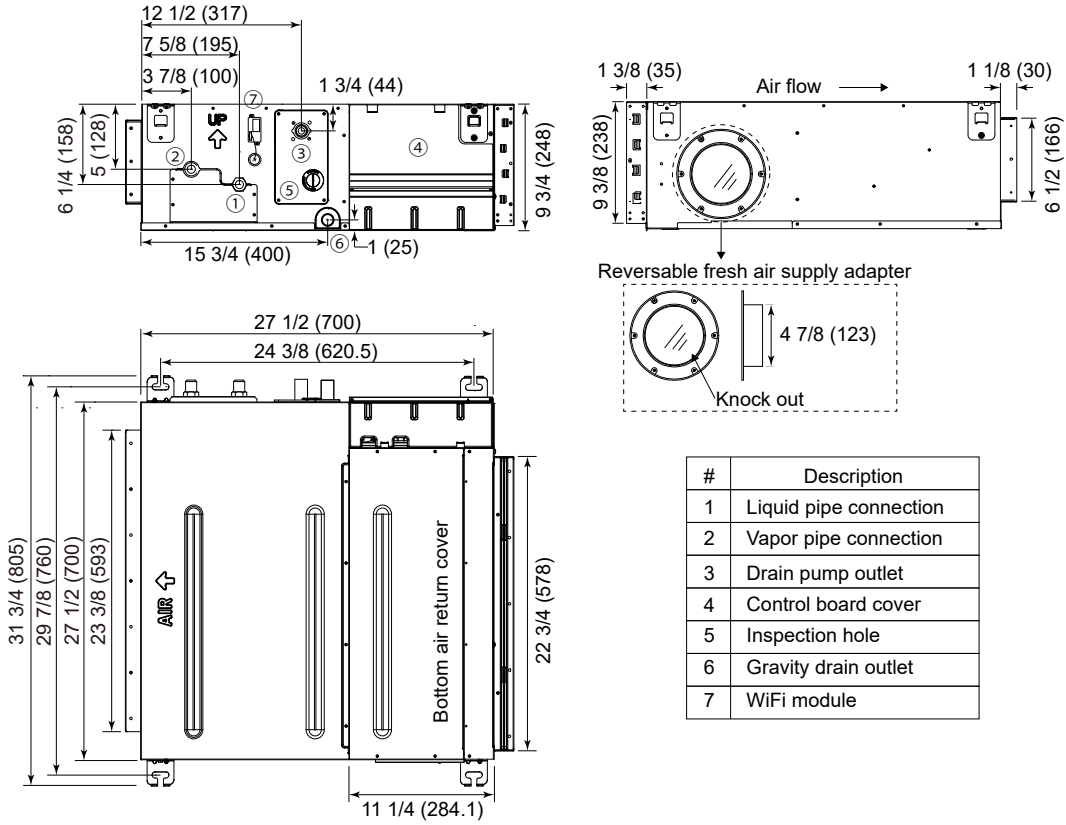
UAMFB0912A





MULTILINK SERIES SUBMITTAL

9000 BTU/HR MID-STATIC DUCTED INDOOR USYM09UCDSA



#	Description
1	Liquid pipe connection
2	Vapor pipe connection
3	Drain pump outlet
4	Control board cover
5	Inspection hole
6	Gravity drain outlet
7	WiFi module



MULTILINK SERIES SUBMITTAL

12000 BTU/HR MID-STATIC DUCTED INDOOR USYM12UCDSA

Job Name: _____
 Purchaser: _____
 Submitted To: _____
 Construction: _____
 Reference: _____

Approval: _____
 Date: _____
 Submitted By: _____
 Unit: _____
 Drawing #: _____



Electrical Requirement	
Power Supply	208/230V, 1 Phase, 60 HZ
Operating Voltage Range	187-253 VAC

Performance	
Rated Cooling Capacity	12,000 BTU
Rated Heating Capacity	13,000 BTU

Piping	
Flare Connections	1/4" (Liquid) 3/8" (Vapor)
Drain Pipe	1 1/4"

Indoor Unit	
Uncrated Dimension (HxWxD)	9 3/4 x 27 1/2 x 27 1/2 in (248 x 700 x 700 mm)
Crated (HxWxD)	13 1/4 x 37 1/2 x 35 1/2 in (340 x 950 x 900 mm)
Maximum ESP (IWC)	0.6
Airflow CFM (Turbo/High/Med/Low)	494/423/352/264
Indoor Sound Level dB (Turbo/High/Med/Low)	35/32/29/26
Motor Rating (HP)	0.18
Heat Exchanger Fin Type	Blue Fin
Condensate Pump	Included - 39 in. Lift
Weight (Ship/Net)	57/66 lbs

Accessories

Wired Controller

Controller must be ordered separately

Compatible With

Simplified Wired Controller (ACT17CWA)

Built-in WiFi

Supply Plenum

UAPT0912A

Return MERV Filter Box

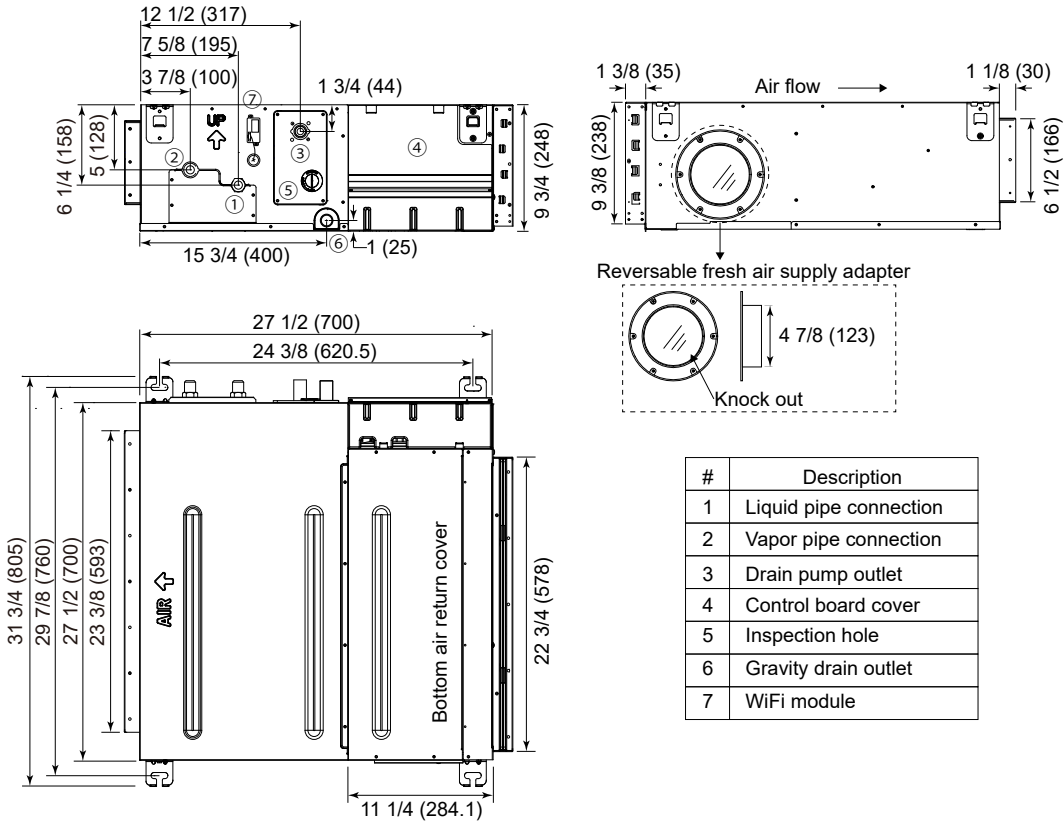
UAMFB0912A





MULTILINK SERIES SUBMITTAL

12000 BTU/HR MID-STATIC DUCTED INDOOR USYM12UCDSA



#	Description
1	Liquid pipe connection
2	Vapor pipe connection
3	Drain pump outlet
4	Control board cover
5	Inspection hole
6	Gravity drain outlet
7	WiFi module



MULTILINK SERIES SUBMITTAL

18000 BTU/HR MID-STATIC DUCTED INDOOR USYM18UCDSA

Job Name: _____

Purchaser: _____

Submitted To: _____

Construction: _____

Reference: _____

Approval: _____

Date: _____

Submitted By: _____

Unit: _____

Drawing #: _____



Electrical Requirement	
Power Supply	208/230V, 1 Phase, 60 HZ
Operating Voltage Range	187-253 VAC

Performance	
Rated Cooling Capacity	18,000 BTU
Rated Heating Capacity	19,000 BTU

Piping	
Flare Connections	1/4" (Liquid) 1/2" (Vapor)
Drain Pipe	1 1/4"

Indoor Unit	
Uncrated Dimension (HxWxD)	9 3/4 x 43 1/4 x 27 1/2 in (248 x 1100 x 700 mm)
Crated (HxWxD)	13 1/2 x 46 x 33 3/4 in (340 x 1170 x 860 mm)
Maximum ESP (IWC)	0.6
Airflow CFM (Turbo/High/Med/Low)	635/529/458/388
Indoor Sound Level dB (Turbo/High/Med/Low)	37/34/32/29
Heat Exchanger Fin Type	Blue Fin
Motor Rating (HP)	0.27
Condensate Pump	Included - 39 in. Lift
Weight (Ship/Net)	70/77 lbs

Accessories

Wired Controller

Controller must be ordered separately

Compatible With

Simplified Wired Controller (ACT17CWA)

Built-in WiFi

Supply Plenum

UAPT1824A

Return MERV Filter Box

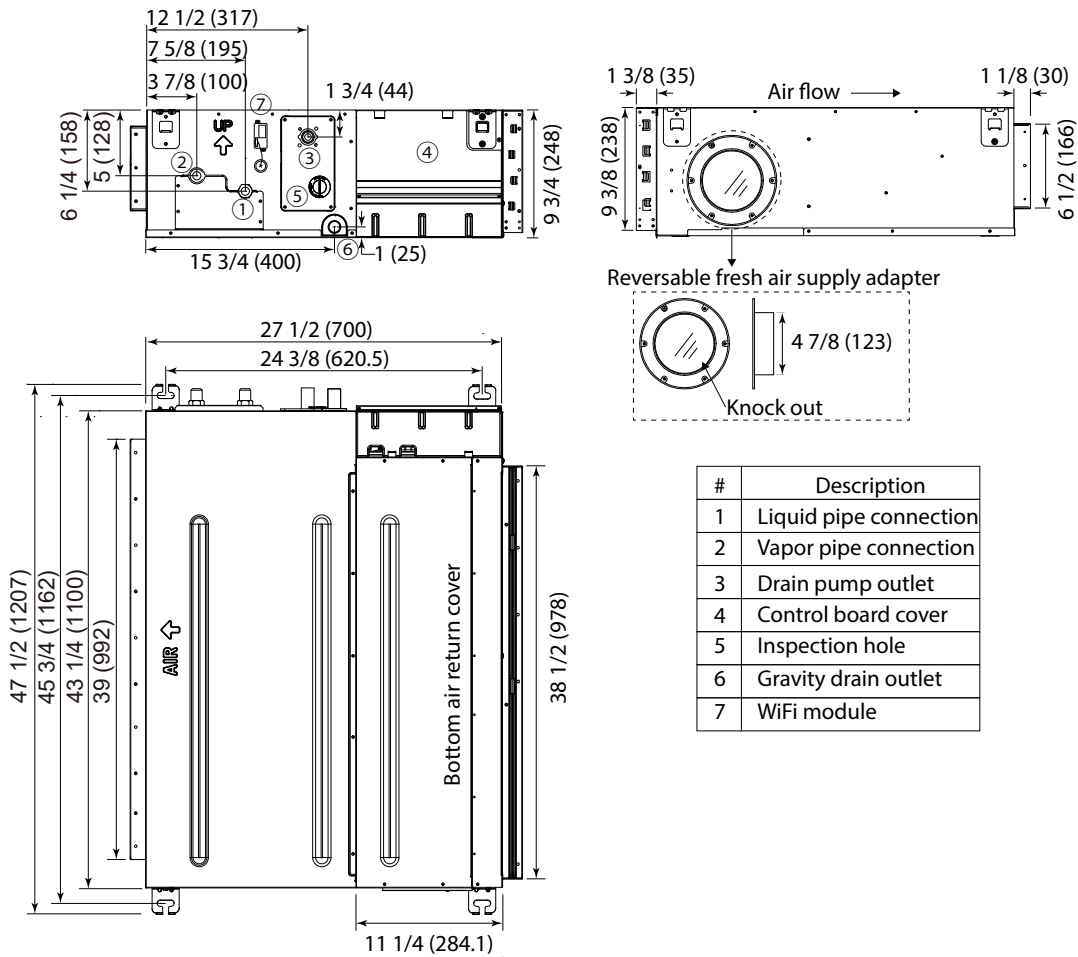
UAMFB1824A





MULTILINK SERIES SUBMITTAL

18000 BTU/HR MID-STATIC DUCTED INDOOR USYM18UCDSA



#	Description
1	Liquid pipe connection
2	Vapor pipe connection
3	Drain pump outlet
4	Control board cover
5	Inspection hole
6	Gravity drain outlet
7	WiFi module



MULTILINK SERIES SUBMITTAL

24000 BTU/HR MID-STATIC DUCTED INDOOR USYM24UCDSA

Job Name: _____
 Purchaser: _____
 Submitted To: _____
 Construction: _____
 Reference: _____

Approval: _____
 Date: _____
 Submitted By: _____
 Unit: _____
 Drawing #: _____



Electrical Requirement	
Power Supply	208/230V, 1 Phase, 60 HZ
Operating Voltage Range	187-253 VAC

Performance	
Rated Cooling Capacity	24,000 BTU
Rated Heating Capacity	25,000 BTU

Piping	
Flare Connections	3/8" (Liquid) 5/8" (Vapor)
Drain Pipe	1 1/4"

Indoor Unit	
Uncrated Dimension (HxWxD)	9 3/4 x 43 1/4 x 27 1/2 in (248 x 1100 x 700 mm)
Crated (HxWxD)	13 1/2 x 46 x 33 3/4 in (340 x 1170 x 860 mm)
Maximum ESP (IWC)	0.6
Airflow CFM (Turbo/High/Med/Low)	845/670/530/470
Indoor Sound Level dB (Turbo/High/Med/Low)	39/36/33/30
Motor Rating (HP)	0.27
Heat Exchanger Fin Type	Blue Fin
Condensate Pump	Included - 39 in. Lift
Weight (Ship/Net)	70/77 lbs

Accessories

Wired Controller

Controller must be ordered separately

Compatible With

Simplified Wired Controller (ACT17CWA)

Built-in WiFi

Supply Plenum

UAPT1824A

Return MERV Filter Box

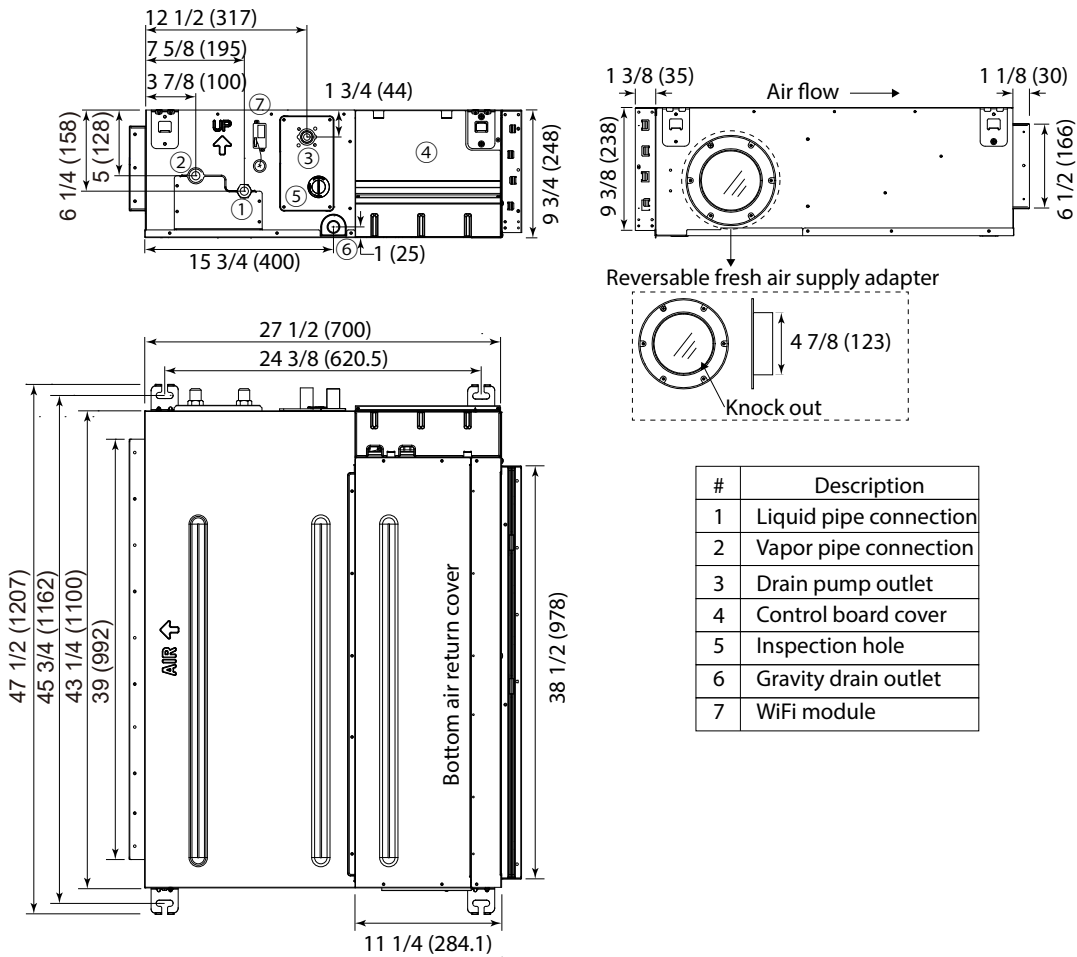
UAMFB1824A





MULTILINK SERIES SUBMITTAL

24000 BTU/HR MID-STATIC DUCTED INDOOR USYM24UCDSA



#	Description
1	Liquid pipe connection
2	Vapor pipe connection
3	Drain pump outlet
4	Control board cover
5	Inspection hole
6	Gravity drain outlet
7	WiFi module



MULTILINK SERIES SUBMITTAL

9000 BTU/HR FLOOR CONSOLE INDOOR USYF09UCDWA

Job Name: _____
 Purchaser: _____
 Submitted To: _____
 Construction: _____
 Reference: _____

Approval: _____
 Date: _____
 Submitted By: _____
 Unit: _____
 Drawing #: _____



Electrical Requirement	
Power Supply	208/230V, 1 Phase, 60 HZ
Operating Voltage Range	187~253 VAC

Performance	
Rated Cooling Capacity	9,000 BTU
Rated Heating Capacity	10,000 BTU

Piping	
Flare Connections	1/4" (Liquid) 3/8" (Vapor)
Drain Pipe	5/8"

Indoor Unit	
Uncrated Dimension (HxWxD)	23 3/4 x 27 1/2 x 8 1/4 in (600 x 700 x 210 mm)
Crated (HxWxD)	27 1/2 x 30 3/4 x 12 in (695 x 783 x 303 mm)
Airflow CFM (Turbo/High/Med/Low)	264/235/205/176
Indoor Sound Level dB (Turbo/High/Med/Low)	40/32/25/20
Motor Rating (HP)	0.04
Heat Exchanger Fin Type	Blue Fin
Weight (Ship/Net)	36/40 lbs

Accessories

Remote Controller

Ships with Standard Remote Control (YR-HG)

Compatible Wired Controllers

Simplified Wired Controller (ACT17CWA)

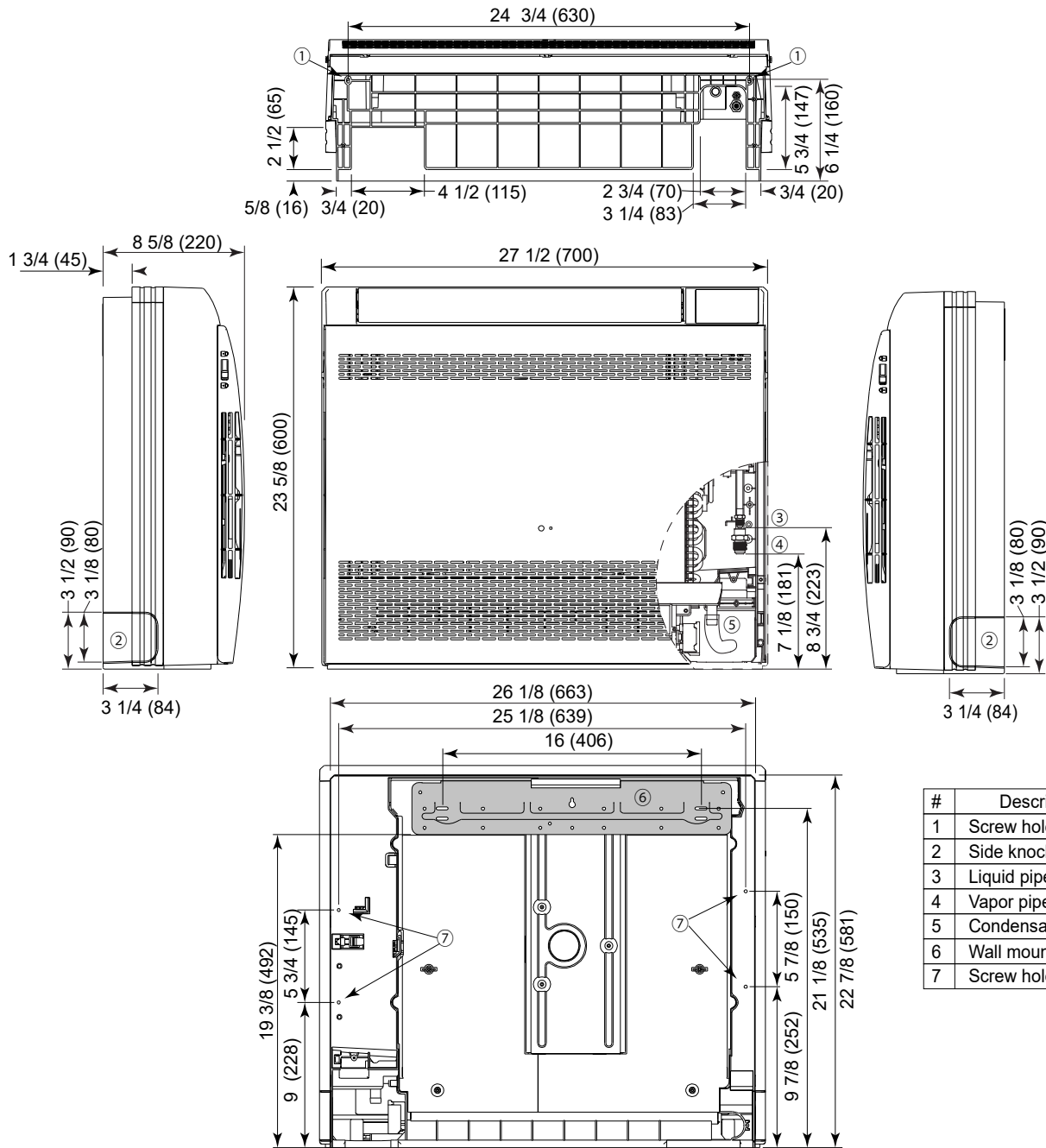
Built-in WiFi





MULTILINK SERIES SUBMITTAL

9000 BTU/HR FLOOR CONSOLE INDOOR USYF09UCDWA



#	Description
1	Screw holes for floor install
2	Side knockout
3	Liquid pipe connection
4	Vapor pipe connection
5	Condensate drain
6	Wall mounting plate
7	Screw holes for wall install



MULTILINK SERIES SUBMITTAL

12000 BTU/HR FLOOR CONSOLE INDOOR USYF12UCDWA

Job Name: _____
 Purchaser: _____
 Submitted To: _____
 Construction: _____
 Reference: _____

Approval: _____
 Date: _____
 Submitted By: _____
 Unit: _____
 Drawing #: _____



Indoor Unit	
Uncrated Dimension (HxWxD)	23 3/4 x 27 1/2 x 8 1/4 in (600 x 700 x 210 mm)
Crated (HxWxD)	27 1/2 x 30 3/4 x 12 in (695 x 783 x 303 mm)
Airflow CFM (Turbo/High/Med/Low)	294/264/235/176
Indoor Sound Level dB (Turbo/High/Med/Low)	42/34/26/21
Motor Rating (HP)	0.04
Heat Exchanger Fin Type	Blue Fin
Weight (Ship/Net)	36/40 lbs

Electrical Requirement	
Power Supply	208/230V, 1 Phase, 60 HZ
Operating Voltage Range	187-253 VAC

Performance	
Rated Cooling Capacity	12,000 BTU
Rated Heating Capacity	13,000 BTU

Piping	
Flare Connections	1/4" (Liquid) 3/8" (Vapor)
Drain Pipe	5/8"

Accessories

Remote Controller

Ships with Standard Remote Control (YR-HG)

Compatible Wired Controllers

Simplified Wired Controller (ACT17CWA)

Built-in WiFi

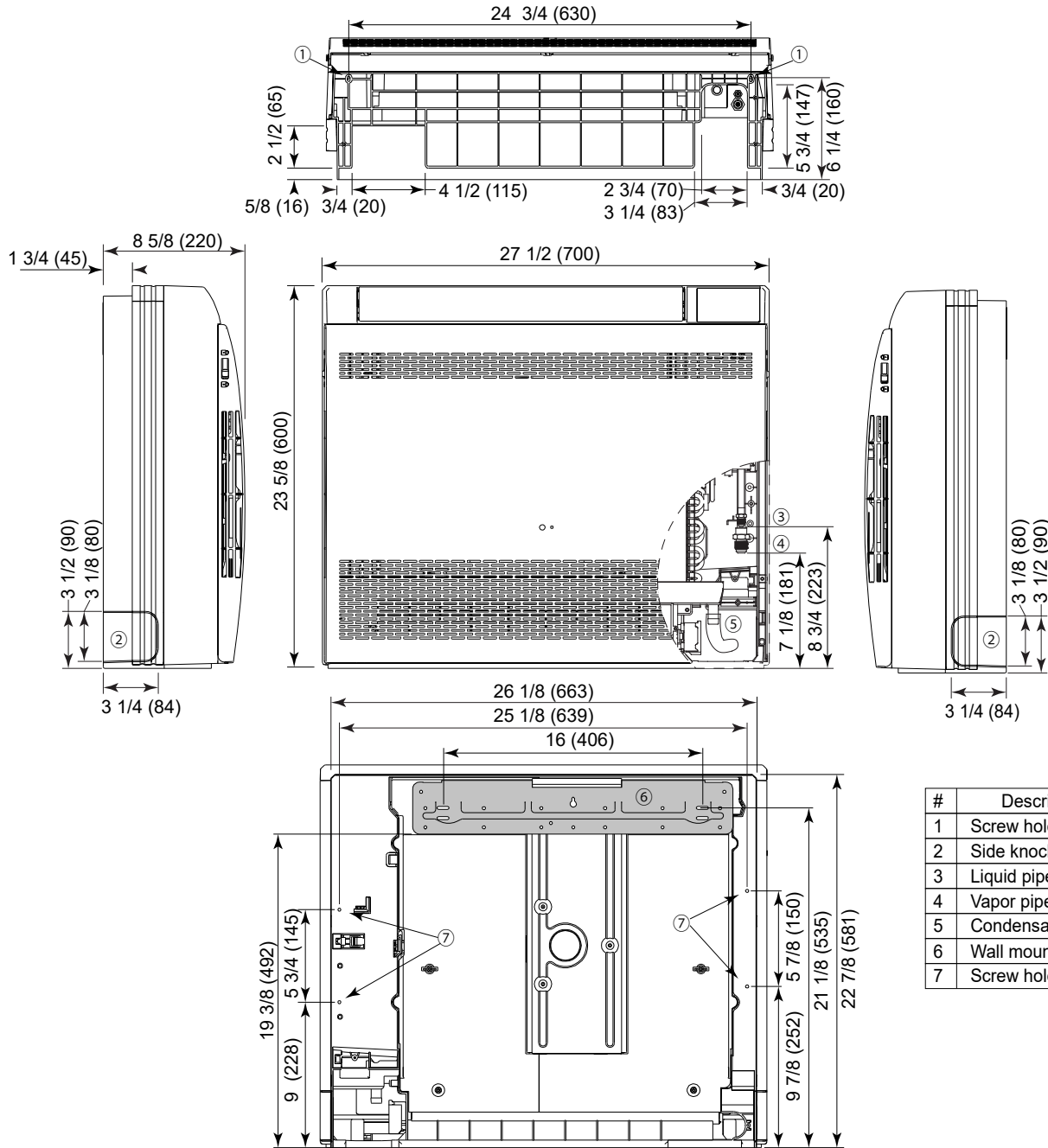


For more information visit us:
www.geappliances.com/ductless



MULTILINK SERIES SUBMITTAL

12000 BTU/HR FLOOR CONSOLE INDOOR USYF12UCDWA



#	Description
1	Screw holes for floor install
2	Side knockout
3	Liquid pipe connection
4	Vapor pipe connection
5	Condensate drain
6	Wall mounting plate
7	Screw holes for wall install



MULTILINK SERIES SUBMITTAL

15000 BTU/HR FLOOR CONSOLE INDOOR USYF18UCDWA

Job Name: _____
 Purchaser: _____
 Submitted To: _____
 Construction: _____
 Reference: _____

Approval: _____
 Date: _____
 Submitted By: _____
 Unit: _____
 Drawing #: _____



Electrical Requirement	
Power Supply	208/230V, 1 Phase, 60 HZ
Operating Voltage Range	187~253 VAC

Performance	
Rated Cooling Capacity	15,000 BTU
Rated Heating Capacity	18,000 BTU

Piping	
Flare Connections	1/4" (Liquid) 1/2" (Vapor)
Drain Pipe	5/8"

Indoor Unit	
Uncrated Dimension (HxWxD)	23 3/4 x 27 1/2 x 8 1/4 in (600 x 700 x 210 mm)
Crated (HxWxD)	27 1/2 x 30 3/4 x 12 in (695 x 783 x 303 mm)
Airflow CFM (Turbo/High/Med/Low)	341/311/282/252
Indoor Sound Level dB (Turbo/High/Med/Low)	46/37/33/28
Motor Rating (HP)	0.04
Heat Exchanger Fin Type	Blue Fin
Weight (Ship/Net)	36/40 lbs

Accessories

Remote Controller

Ships with Standard Remote Control (YR-HG)

Compatible Wired Controllers

Simplified Wired Controller (ACT17CWA)

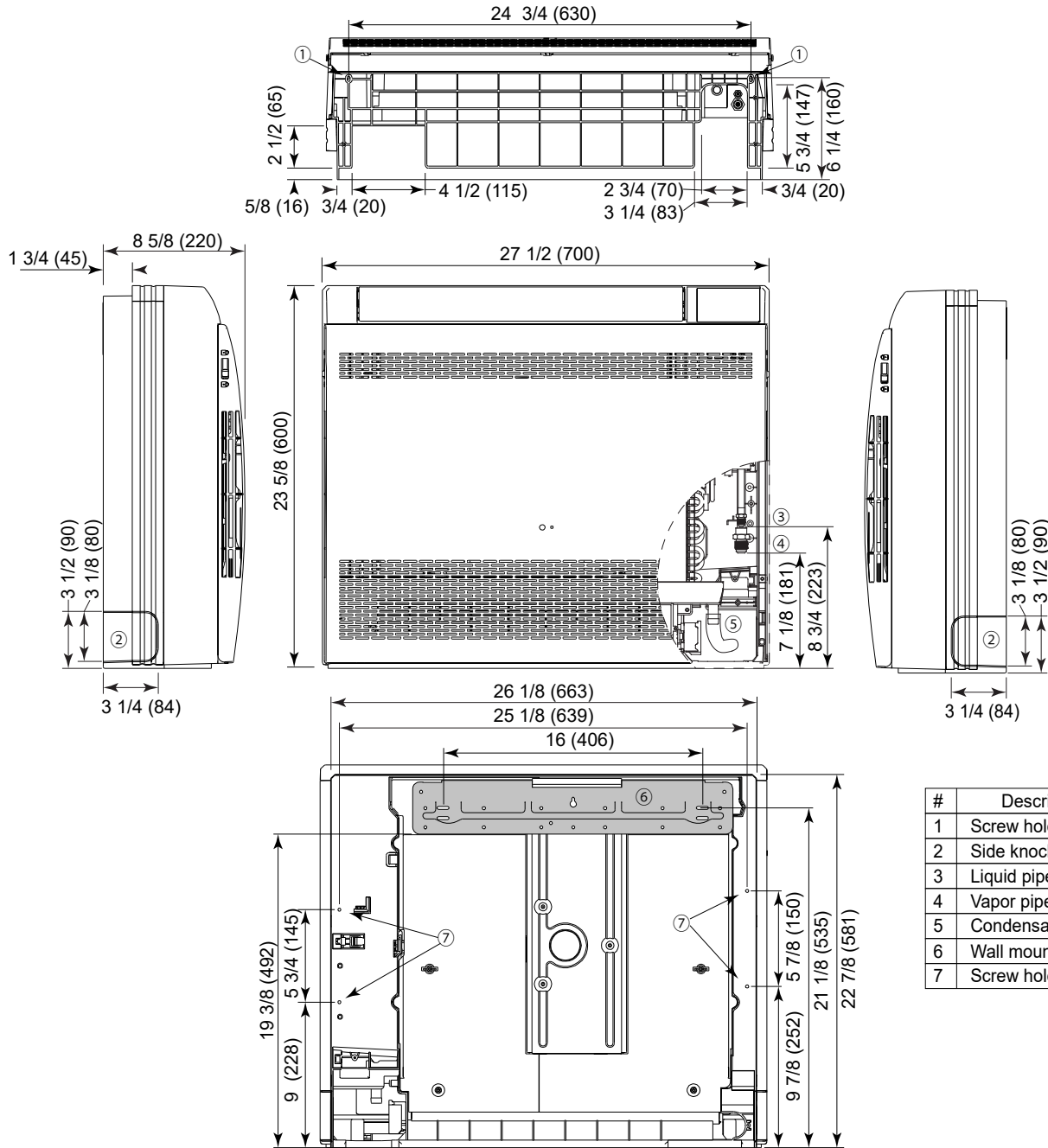
Built-in WiFi





MULTILINK SERIES SUBMITTAL

15000 BTU/HR FLOOR CONSOLE INDOOR USYF18UCDWA



#	Description
1	Screw holes for floor install
2	Side knockout
3	Liquid pipe connection
4	Vapor pipe connection
5	Condensate drain
6	Wall mounting plate
7	Screw holes for wall install