

INTRODUCING THE
ZONELINE® UltimateV12™
PRODUCT AND ACCESSORIES GUIDE



Inverter Technology & Adjustable Speed Makeup Air
complete the ultimate VTAC experience.



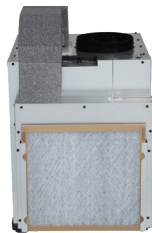
GE APPLIANCES

ZONELINE® UltimateV12™



The GE Zoneline® UltimateV12™ brings a new level of intelligence and performance to our user friendly line of Vertical Terminal Air Conditioners.

The UltimateV12 is the next generation of VTAC featuring Inverter Technology and Adjustable Speed Makeup Air, enabling controlled and precise performance in a broad range of applications.



UltimateV12 FACT:

RAK190V 2-WAY COMMUNICATION

The variable speed design of this system paired with the RAK190V 2-Way Communication Thermostat provides the ultimate control. This unit maintains temperature at slower running speeds, which results in the ultimate sound and energy performance.

12-INNOVATIVE FEATURES

1 INSTA-PLATFORM™

2 SELF-CONTAINED DRAINAGE SYSTEM

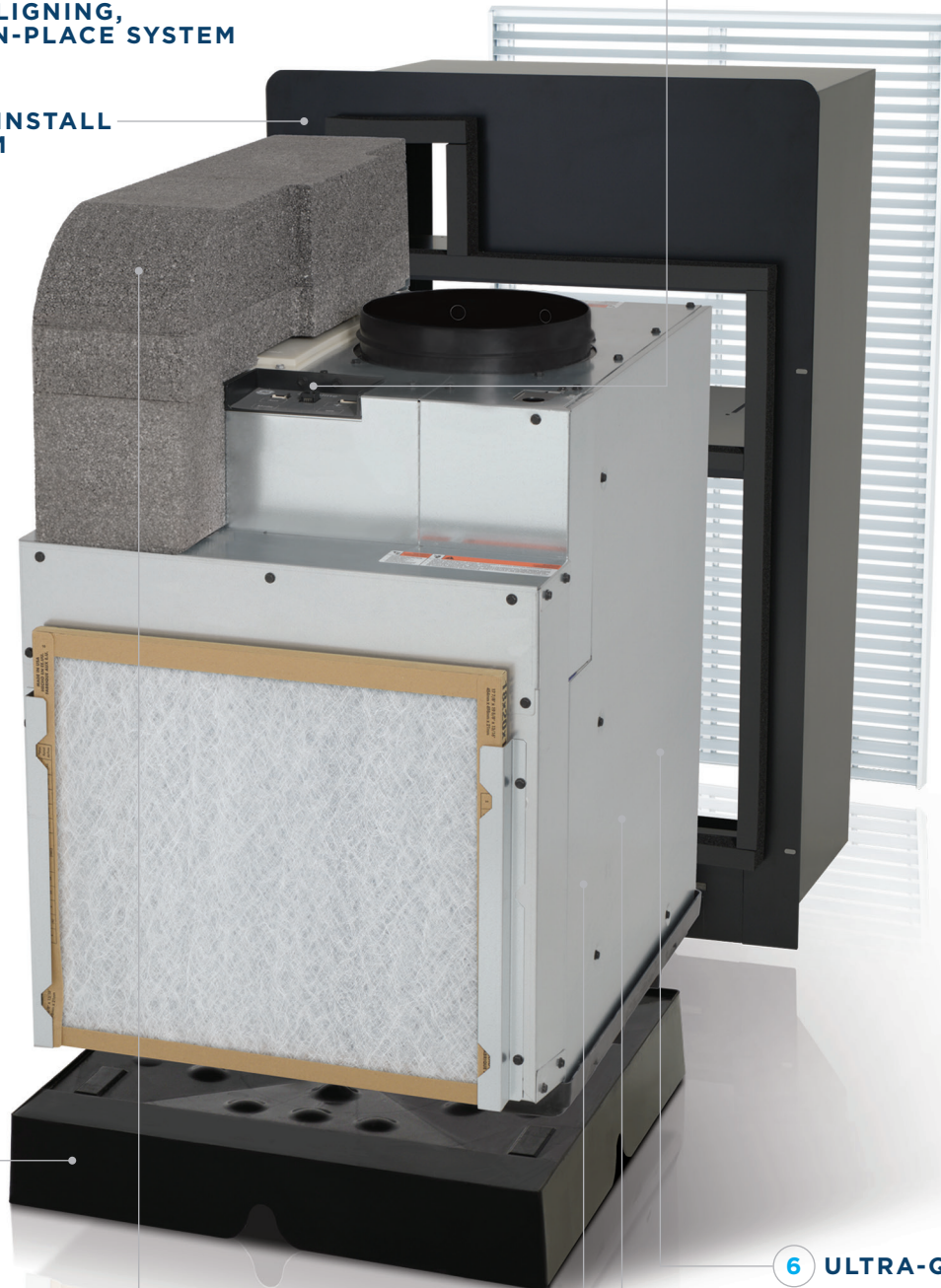
3 FAST-CONNECT PLUMBING

4 SELF-ALIGNING,
LOCK-IN-PLACE SYSTEM

5 QUICK-INSTALL
PLENUM

9 ONBOARD
DIAGNOSTICS

10 SmartHQ™ WIFI
CAPABILITY



6 ULTRA-QUIET

7 REVERSE CYCLE
DEFROST

8 CORROSION
PROTECTION

11 INVERTER
TECHNOLOGY

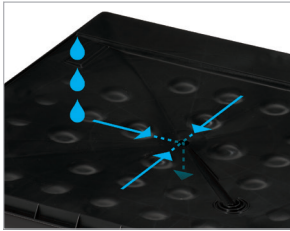
12 ADJUSTABLE SPEED
MAKEUP AIR

FEATURES AND BENEFITS



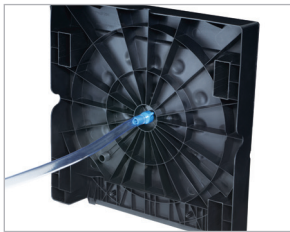
INSTA-PLATFORM™

Eliminates the need for on-site customized platform construction saving time and money.



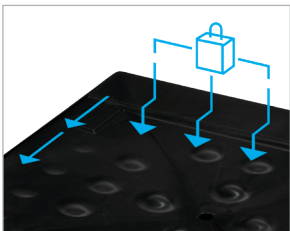
SELF-CONTAINED DRAINAGE SYSTEM

Easy installation allows for simple chassis removal while leaving plumbing completely intact.



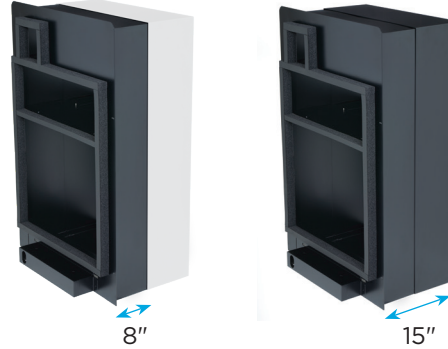
FAST-CONNECT PLUMBING

Allows preliminary plumbing to be installed outside the closet and prior to installing the chassis.



SELF-ALIGNING LOCK-IN-PLACE SYSTEM

The Insta-Platform and the VTAC are self-aligning with a lock-in-place system ensuring the unit is engaged with the plenum gasket.



QUICK-INSTALL PLENUM

Plenum is easily installed from the interior without the need for exterior building access. Caulking is required. It conveniently expands from 8" to 15" for a custom fit.



ULTRA-QUIET

Delivers quiet cooling power with smooth sound for a good night's sleep.



REVERSE CYCLE DEFROST

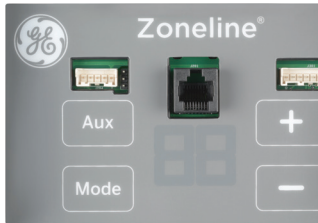
The variable speed compressor and advanced defrost capability allow for the best heat pump operation down to 0° F.



CORROSION PROTECTION

Exclusive rust-proof basepan and bulkhead provide another level of corrosion protection.

FEATURES AND BENEFITS



ONBOARD DIAGNOSTICS

Electronic controls give clear and fast diagnostics data and fault codes, for fast and easy resolution.



SMARTHQ™ WIFI CAPABILITY

Optional SmartHQ module* gives property managers the ability to monitor multiple units remotely, enhancing guests' experience.

Learn more at smarthqsolutions.com/management



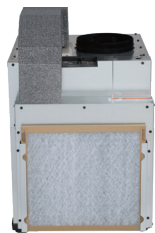
INVERTER TECHNOLOGY

Variable speed operation provides an advantage with shorter recovery time, improved efficiency, sound quality and dehumidification. Consistent room temperature allows for total room comfort.



ADJUSTABLE SPEED MAKEUP AIR

Makeup air and customizable variable speed fan technology provide the precise airflow for specific applications. For energy savings, Makeup air delivery can be cycled based on occupancy, using a compatible occupancy detecting thermostat. Optional MERV 13 filtration available.



UltimateV12 FACT:

SAVE 60% ON INSTALLATION TIME†

Complete installation from the interior makes installation 60% faster!

†Compared to Friedrich Vert-I-Pak models or GEA AZ91 series models, including installing and building a platform.

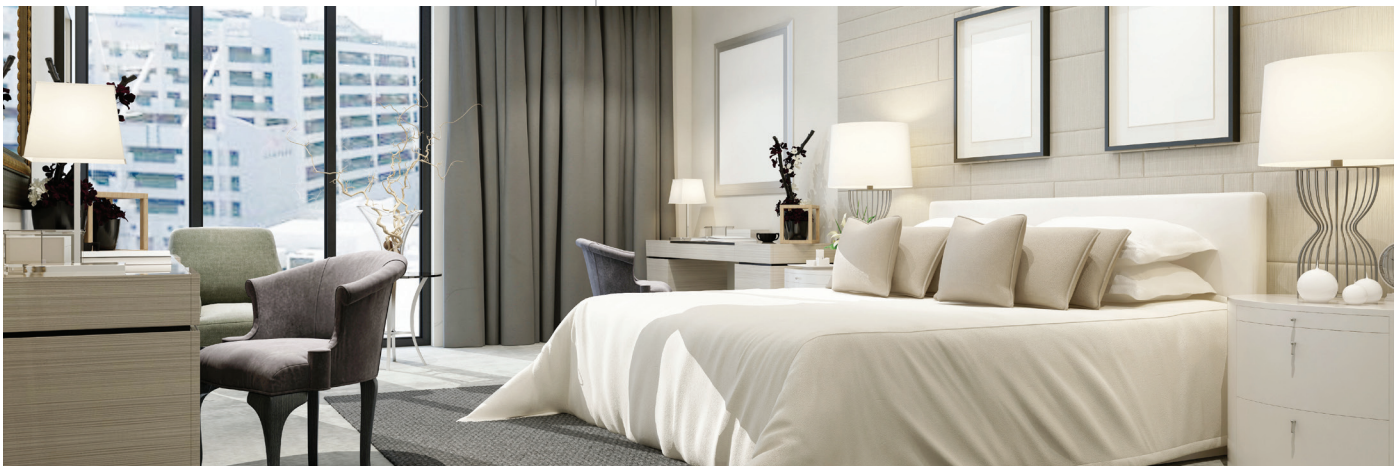
*SmartHQ module part number PBX23W00Y0, PBX23W00Y1 or SHCM10PK (10 Pack).

INVERTER TECHNOLOGY THE REASONS WHY



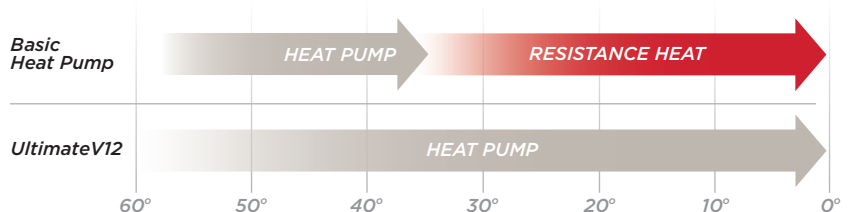
Inverter Technology is the latest innovation in Zoneline Vertical Terminal Air Conditioning. By enabling variable speed operation, it improves:

- **Temperature Recovery Time**—ensuring occupant comfort by quickly reaching the desired setpoint temperature
- **Efficiency**—aligns compressor output to room needs thereby reducing energy consumption
- **Low Ambient Heat Pump**—the variable speed compressor and advanced defrost capability allows for the best in heat pump operation down to 0° F
- **Two-Way Thermostat Capability**—advanced thermostat communication allows for true compressor speed control and adjusts cooling & dehumidification outputs to precisely match room needs
- **Sound Quality**—operates at slower speeds longer and smoothly changes speed to avoid abrupt start-ups
- **Dehumidification**—with 3 selectable levels of enhanced dehumidification, it maintains comfortable room conditions using variable speed to reduce humidity, even in challenging environments



UltimateV12 HEAT PUMP SAVINGS

- COP of 3.6 at rated conditions
- Heat Pump operates down to 0° F
- Minimizes use of costly back-up heat

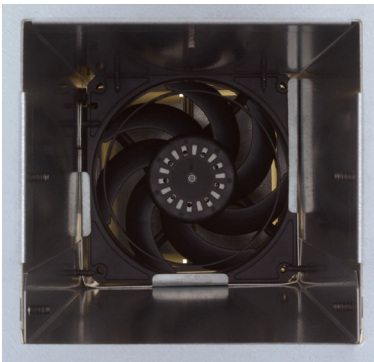


ADJUSTABLE SPEED MAKEUP AIR

MAKEUP DUCT INLET FAN



Open



Closed

A dedicated variable speed fan allows for the delivery of room specific volumes of conditioned Makeup air of up to 70 CFM.

The RAK190V thermostat provides the ability to achieve energy savings by cycling Makeup air based on occupancy status.

The RAA13V is an optional MERV 13 filter that reduces dust, pollen, mold, bacteria, viruses and other airborne pathogens from entering the room. It provides cleaner Makeup air to improve overall indoor air quality, with easy access from the front side of unit.

ADJUSTABLE SPEED MAKEUP AIR



NOTE: AZ9V models are not recommended for installation within two miles of coastal areas.

THE SELMER STORY

BUILDING SOMETHING GREAT

GE Appliances has expanded its production of VTAC product in 2021, with a 5-million-dollar investment and adding positions to the plant in Selmer, TN.

The goal is to provide vital solutions to the current environment and overall air quality. Adding break through Inverter Technology and Makeup Air improves efficiency and energy usage. SmartHQ™ WiFi connection and quick diagnostic capabilities heighten the owner and guest experience.

Designed, engineered and assembled in the U.S., ZONELINE® UltimateV12™ is manufactured with a one purpose in mind—*to build something great!*



OUR STORY



“Every UltimateV12 VTAC that leaves Selmer is built with precision and pride.”



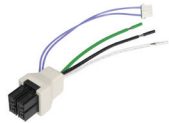
“Building and assembling the Vertical Zoneline is my contribution to improving air quality and the environment.”

ACCESSORIES

The GE Zoneline® UltimateV12™ system requires a set of essential accessories for proper operation.



**RAK150VF2
2-STAGE COOL/HEAT
THERMOSTAT**



POWER CONNECTION



**ACCESS PANEL WITH
RETURN GRILLE
(RAVRG4)**
Cutout: 28-1/8"W X 55-7/8"H



**RAA13V
MERV 13 FILTER
(OPTIONAL)**



**RAK190V
2-WAY ENERGY MANAGEMENT
THERMOSTAT
Q4 2022**



**INSTA-PLATFORM™
(RAVDPLAT)**



**WALL PLENUM
(RAVWPT15B)**
Cutout: 24"W X 40"H



**GRILLE
(RAVAL4)**

**18"x20"x1" FILTER INCLUDED
WITH UNIT CHASSIS**

COMPLETE ACCESSORY LIST (Must be ordered separately)

KIT NUMBER	DESCRIPTION
RAK150VF2	Two Fan Speed Thermostat for Two Stage Compressor
RAK190V	Two Way Communicating, Occupancy Detection, Energy Management Thermostat
RAVAL4	Exterior Grille
RAVRG2	Return Air Grille for Flush Door
RAVRG4	Access Panel with Return Air
RAVWPT15B	Wall Plenum for walls 8"-deep to 15" thick
RAK315D	230-208 Volt Direct Connect Power Supply Kit, 2.45/2 kW heat, 15 Amp
RAK320D	230-208 Volt Direct Connect Power Supply Kit, 3.45/2.82 kW heat, 20 Amp
RAK330D	230-208 Volt Direct Connect Power Supply Kit, 5/4.08 kW heat, 30 Amp
RAK515D	265-Volt Universal Direct Connect Power Supply Kit, 2.45 kW heat, 15 Amp
RAK520D	265-Volt Universal Direct Connect Power Supply Kit, 3.45 kW heat, 20 Amp
RAK530D	265-Volt Universal Direct Connect Power Supply Kit, 5 kW heat, 30 Amp
RAVDPLAT	Insta-Platform™
SHCM10PK	SmarrHQ™ Connect Module - (10 pack)
RAA13V	MERV 13 Makeup Air Filter

SPECIFICATIONS

GE AZ9V SERIES-230-208V* AZ9VH12DBM

IMPORTANT NOTICE

Equipment used as a primary source for heating or cooling is an integral part of the building in which it is installed. Proper application is essential for satisfactory performance over a wide range of operating conditions. It is strongly recommended that a professional engineer determine proper application.

If this unit is a replacement unit, its specifications and performance may differ from those of the unit it is replacing. For that reason, we again strongly recommend that a professional engineer determine proper application.

VOLTAGE	230-208
FEATURES	
Cooling BTUH	12,100
Cooling BTU Range (95F outdoor)	5,200-16,200
Max Cooling BTU (115F)	11,200
Max Cooling BTU (75F)	20,000
Cooling EER	11.6
IEER**	20
Cooling Watts	1,040
Cooling Amps	4.7
Sensible Heat Ratio(SHR)-nominal cool, high fan	75%
Dehumidification (pints per hour)-nominal cooling, high fan	3.16
Makeup air CFM	30-70 (no filter) 25-70 (with MERV13 Filter Kit)
Refrigerant	R-410A
Indoor CFM (hi/lo) (0.1 ESP)	465/380
HEAT PUMP	
Heat Pump BTU	11,400
Heating BTU Range @47F	4,500-13,000
Heat Pump COP @47F	3.6
Heating BTU @17F (nominal/max)	6,100/9,400
Heat Pump COP @17F (nominal/max)	2.2/2.1
Heat Pump Watts	925
Heat Pump Amps	4.4
CASE DIMENSIONS	
Width (in.)	23-5/8
Depth (in.)	28-3/8
Height (in.)	36-7/8
Net weight (lbs.)	145
Approx. ship. weight (lbs.)	158
Closet ID for front install (min.)	29-5/8"W x 32"D
Closet ID for side install using full door (min.)***	29-5/8"W x 34"D
Closet ID for side install using RAVRG4***	34"W x 40"D

*230V Performance Data Listed

** Tested to proposed 2021 AHRI 390 standard

*** See installation instructions for side installation details

GE AZ9V SERIES-265V HEAT PUMP WITH BACKUP ELECTRIC HEAT AZ9VH12EBM

VOLTAGE	265
FEATURES	
Cooling BTU	12,200
Cooling BTU Range (95F outdoor)	5,200-16,200
Max Cooling BTU (115F)	11,200
Max Cooling BTU (75F)	20,000
Cooling EER	11.6
IEER**	20
Cooling Watts	1,050
Cooling Amps	4.2
Sensible Heat Ratio(SHR)-nominal cool, high fan	77%
Dehumidification (pints per hour)-nominal cooling, high fan	3.16
Makeup air CFM	30-70 (no filter) 25-70 (with MERV13 Filter Kit)
Refrigerant	R-410A
Indoor CFM (hi/lo) (0.1 ESP)	465/380
HEAT PUMP	
Heat Pump BTU	11,300
Heating BTU Range @47F	4,500-13,000
Heat Pump COP @47F	3.6
Heating BTU @17F (nominal/max)	6,100/9,400
Heat Pump COP @17F (nominal/max)	2.2/2.1
Heat Pump Watts	915
Heat Pump Amps	3.8
CASE DIMENSIONS	
Width (in.)	23-5/8
Depth (in.)	28-3/8
Height (in.)	36-7/8
Net weight (lbs.)	145
Approx. ship. weight (lbs.)	158
Closet ID for front install (min.)	29-5/8"W x 32"D
Closet ID for side install using full door (min.)***	29-5/8"W x 34"D
Closet ID for side install using RAVRG4***	34"W x 40"D

POWER CONNECTION REQUIREMENTS (RESISTANCE HEAT)

230-208 VOLT	12,000 BTUh		
POWER CONNECTION KIT	RAK315D	RAK320D	RAK330D
Heater BTUh	8,360/6,838	11,770/9,629	17,060/13,952
Total Watts	2,568/2,122	3,568/2,940	5,118/4,207
Heater Watts	2,450/2,004	3,450/2,822	5,000/4,089
Total Heating Amps	10.7/9.6	15/13.6	21.7/19.7
MCA	15	20	30
Recommend Protective Device (MOCP)	15 amp time delay fuse or breaker	20 amp time delay fuse or breaker	30 amp time delay fuse or breaker

POWER CONNECTION REQUIREMENTS (RESISTANCE HEAT)

265 VOLT	12,000 BTUh		
POWER CONNECTION KIT	RAK515D	RAK520D	RAK530D
Heater BTUH	8,360	11,770	17,060
Total Watts	2,568	3,568	5,118
Heater Watts	2,450	3,450	5,000
Total Heating Amps	9.2	13	18.9
MCA	15	20	30
Recommend Protective Device (MOCP)	15 amp time delay fuse or breaker	20 amp time delay fuse or breaker	30 amp time delay fuse or breaker

PROVIDING SUPPORT



Todd Allen
Commercial Trainer, Zonline

The UltimateV12™ is the next generation of GE Appliances' VTAC innovation. As the only Vertical Terminal Air Conditioner in the industry providing complete installation from the interior, we've taken it to the next level by introducing Inverter Technology. This enables both owners and guests to enjoy the comforts and benefits, by maintaining shorter recovery time and precise temperature control—providing efficient cooling across all climate conditions.

We provide the latest information about Zonline product through training materials and videos. Knowledge through training is key in conveying our message and positioning our product as the Ultimate owner & guest experience.

Sincerely,
Todd Allen

To see all the Zonline Product & Training videos, please visit Zonline.com

INSTALL & MAINTAIN MY ZONELINE

What to Look for
in Heating & Cooling Units

Common Air Conditioner Terminology

Vertical Air Conditioner
Installation Guide

Service & Support

Download Zonline Literature

What BTUH Size Do I Need?

PTAC Installation Guide

Accessories for your
Vertical Air Conditioner

Parts & Accessories

Contact Zonline
Technical Support

Do I Need Heat Pump
or Electric Resistance?

PTAC Installation Guide

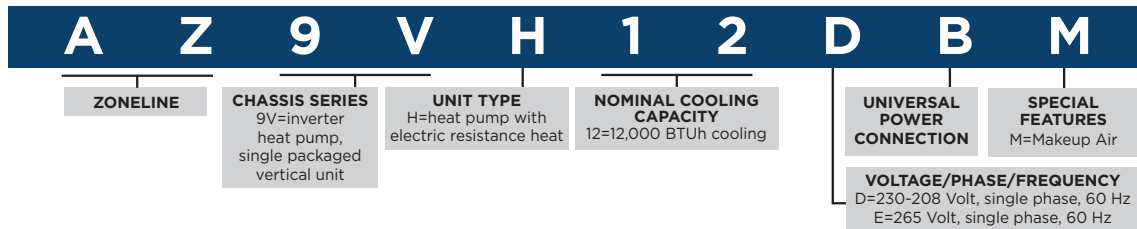
Selecting the Right Accessories
for your PTAC

How to Clean and Maintain
your Zonline

Warranty Information

Contact us at: Hospitality.direct@geappliances.com

NOMENCLATURE



WARRANTY

- 1 **From Date Of Original Purchase** Any part of the air conditioner which fails due to a defect in materials or workmanship. During this **limited one-year warranty**, GE will provide, free of charge, all labor and related service costs to replace the defective part.
- 5 **From Date Of Original Purchase** Sealed Refrigerating System - if any part of the Sealed Refrigerating System (the compressor, condenser, evaporator, and all connecting tubing, including the makeup air system) should fail due to a defect in materials or workmanship. During this **limited five-year warranty**, GE will provide, free of charge, all labor and related service costs to replace the defective part.
- 2-5 **From Date Of Original Purchase** Fan Motors, Switches, Heater, Heater Protectors, Compressor Overload, Solenoids, Circuit Boards, Auxiliary Controls, Thermistors, Freeze Sentinel, Frost Controls, Pump, Capacitors, Varistors and Indoor Blower Bearing, if any of these parts should fail due to a defect in materials or workmanship. During this **additional four-year limited warranty**, GE will provide the replacement part free of charge. The customer will be responsible for any labor and related service costs.



GE APPLIANCES
a Haier company

AIR & WATER
SOLUTIONS

GE is a trademark of the General Electric Company. Manufactured under trademark license.

GE Appliances has a policy of continuous improvement of its products and reserves the right to change materials and specifications without notice.

Appliance Park Louisville, KY 40225

geappliances.com

Pub. No 20-S0012-22 OTGEA22082