



1874 C.J. Smith establishes the company

1936 A. O. Smith Patents the glass-lined water heater

1996 Launches the Cyclone® Commercial Water Heater

2014 Cyclone® Mxi Launch

# Innovation

Continues to Lead



## UP TO 98% THERMAL EFFICIENCY

# Cyclone® Mxi

### MODULATING

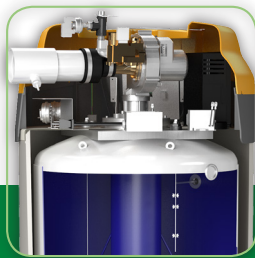
A. O. Smith has delivered innovative hot water solutions for nearly 80 years. As a global leader in water heating, A. O. Smith offers a wide selection of quality residential and commercial water heaters that provide an energy-efficient solution.

The Cyclone® family of water heaters is an example of such a solution. Introduced in 1996, the Cyclone is the industry leader when it comes to certified ENERGY STAR® high efficiency gas water heating. And with the newest member of the Cyclone family; the Cyclone Mxi, innovation continues to lead.



For more information, please visit [www.hotwater.com](http://www.hotwater.com).

# FEATURES & BENEFITS OF THE Cyclone<sup>®</sup> Mxi MODULATING



## **FULLY MODULATING COMBUSTION**

- Modulates the firing rate as the demand changes
- Modulating the burner results in higher overall operating efficiencies and longer service life
- Models are available from 120,000 to 499,900 BTU/h

## **RELIABLE COMPONENTS**

- Robust direct spark ignition for years of worry-free operation
- Pre-mix burner system designed for smooth light off and operation

## **HELICAL COIL HEAT EXCHANGER**

- Large surface area for heat transfer maximizes efficiency
- External and internal glassing
- Significantly fewer weld joints result in less opportunity for leaks compared to straight multi-flue designs
- Baffle-free design avoids unwanted restriction and hot spots
- No radiant heat loss at the base results in maintained efficiency over time
- Coil design resists scale build-up
- Coil design results in reduced weight of the water heater

## **ULTRA HIGH EFFICIENCY**

- ENERGY STAR<sup>®</sup> qualified
- Rated thermal efficiencies of up to 98%

## **ADVANCED ELECTRONIC CONTROLS**

- Easy-to-read diagnostics
- Easily adjustable advanced temperature control
- Optional iCOMM<sup>™</sup> remote monitoring

## **PERMAGLAS<sup>®</sup> GLASS LINING PROCESS**

- Tank is glass coated using an industry exclusive "Ultra Coat<sup>™</sup>" glassing process
- Coating is applied as a liquid, and the tank is mechanically rotated to ensure all areas are evenly covered to protect against corrosion

## **EASY INSTALLATION**

- Unique design has all components located on top or on the front
- Lightweight design allows for easy maneuverability during installation

## **POWERED ANODES ON ALL MODELS**

- Titanium powered anodes standard on all model sizes
- Powered anodes work in all water conditions, never need replacing and eliminate possibility of strong water odors usually related to conventional anodes

## **DIRECT VENT LENGTHS**

- 120 to 250 models can be direct vented using 3" PVC, CPVC or polypropylene pipe up to 50 equivalent feet and 120 feet using 4" pipe
- 300 to 500 models can be vented using 4" pipe up to 70 feet and 6" pipe up to 120 feet

## **WATER DURABLE**

- Approved for operation in a variety of water conditions
- The unique design allows it to maintain efficiency in higher levels of water hardness
- Nearly unaffected by scale build-up due to the burner on top and heat passages well above the bottom of the tank

## **WATER CONNECTIONS**

- 1 ½" top water outlet
- Recirculation loop return connection
- 1 ½" lower front water inlet

## **FIELD WIRING JUNCTION BOX**

- Terminal block for easy 115v wiring connection
- Auxiliary relay
- Built-in surge protection



A. O. Smith Corporation  
500 Tennessee Waltz Parkway • Ashland City, TN 37015 • PH 800-527-1953  
www.hotwater.com