



10 TON HORIZONTAL LOG SPLITTER

SPLITMASTER



MODEL NO. 40151000

Owner's Manual

ASSEMBLY & OPERATING INSTRUCTIONS



This safety alert symbol identifies important safety messages in this manual. Failure to follow this important safety information may result in serious injury or death.



Table of Contents

	Page(s)
Important Safety Information.....	1-6
Intended Use	1
Personal Protective Equipment	1
Safety Decals	1-2
General Safety	3
Preparation of the Log	3
Work Area	3
Operation of the Log Splitter	3-4
Repair and Maintenance Safety	4
Hydraulic Safety	5
Fire Prevention	5-6
Towing Safety	6
Assembly Instructions	7
Operating Instructions	7-9
Engine Oil Recommendations	8
Hydraulic Oil Recommendations.....	8
Starting Instructions	8
Towing	9
Operation	9
Maintenance	9
Parts List	10-11
Parts Breakdown Illustration	12
Notes	13
Specifications	Back Cover



IMPORTANT SAFETY INFORMATION



WARNING: Read and thoroughly understand all instructions and safety information before assembling or operating this log splitter. Failure to do so may cause serious injury or death. Do not allow anyone to operate this log splitter who has not read this manual. As with all power equipment, a log splitter can be dangerous if assembled or used improperly. Do not operate this log splitter if you have doubts or questions concerning safe operation. Call our customer service department at 1-800-525-8322 to address these concerns.

Si no entiende ingles, se prefiere que busque alguien que interprete las instrucciones para usted.

INTENDED USE

NEVER use this log splitter for any other purposes than splitting wood. It is designed for this use **only**. Any other use can cause serious injury or death.

PERSONAL PROTECTIVE EQUIPMENT



BEFORE operating this log splitter make sure that you wear safety gear such as goggles or safety glasses, steel toed shoes and tight fitting gloves (without loose cuffs or draw strings). Always wear a protective hearing device when operating this log splitter.

NEVER wear loose clothing or jewelry that can be caught by moving parts of the log splitter. Keep clothing and hair away from all moving parts when operating this log splitter.

SAFETY DECALS

Make sure that all safety warning decals are in good condition and readable. Always replace missing or defaced decals. Write us or call 1-800-525-8322 and they will be sent to you at no charge.

WARNING		CAUTION	OPERATING INSTRUCTIONS
	<ul style="list-style-type: none"> Read and understand owner's manual thoroughly before operation. Failure to do so may result in serious injury. Manual also available online at www.youngman.com. Only one person should load and operate the log splitter. Keep all others away during operation. Never allow one person to operate the valve while another is positioning the log. Always position the log with hands on the sides of the log. Keep hands clear of ends. Do not operate log splitter under the influence of alcohol, drugs, or medication. Never check for leaks with your hands. High pressure hydraulic hoses through small holes and cracks serious injury which could result in blood poisoning. Always stay in the operator zone when operating the log splitter. Keep hands, feet, and clothing away from power driven parts. Do not attempt to step or reach over log splitter. Do not add gasoline while the engine is hot or running. Allow all spilled gas to evaporate before using log splitter. Always operate outdoors. Exhaust gases contain carbon monoxide. The carbon gas can be deadly when inhaled. 	<ul style="list-style-type: none"> Always wear safety glasses, safety shoes, and protective hearing device during operation. Always shut off engine when leaving log splitter unattended, even for a short time. Always operate log splitter on level, dry, non-slippery surfaces. Keep off edges. Keep work area clear of split wood, debris, and other obstacles. Always split wood in the direction of the grain. 	<ol style="list-style-type: none"> Read the Owner's manual for complete safety and operation instructions. Manual is also available online at www.youngman.com. Set up the log splitter in a clear, level area. Make sure that the suction part of the fork is always on the lower side of the log splitter. Block the wheels. Make sure the log splitter is locked in place when splitting in the horizontal position. Start the engine. Refer to the Owner's manual and the Engine Operating and Maintenance manual. Place a log on the beam against the wedge. Position the log with your hands on the sides. Make sure the log is securely placed against the wedge and the beam. Depress the valve handle so that the cylinder will draw the ram into the log. Extend the cylinder until the log splits or to the end of the stroke. If the log has not completely split allow the cylinder that reached the end of its stroke to retract the cylinder.
		<p>Control Valve</p> <p>Extend Retract</p>	<p>For Responsive Service Call 1-800-525-8322</p>

PART NUMBER: 52061000
LOCATION: HYDRAULIC CYLINDER



IMPORTANT SAFETY INFORMATION



PART NUMBER: 52060700
LOCATION: FRONT OF TONGUE



PART NUMBER: 52055200
LOCATION: SIDE OF RAM



IMPORTANT SAFETY INFORMATION

GENERAL SAFETY

Failure to follow these instructions may result in serious injury or death.

NEVER allow children to operate this log splitter. **NEVER** allow adults lacking proper instructions and understanding to operate this log splitter.

KEEP all people and pets a minimum of 10 feet away from your work area when operating this log splitter. Only the operator is to be near the log splitter during use.

NEVER actuate the control until everyone is clear of the work area.

NEVER operate the log splitter when under the influence of alcohol, drugs or medication.

NEVER allow a person who is tired or otherwise not alert to use your log splitter.

PREPARATION OF THE LOG

Both ends of the log should be cut square to help prevent the log from riding out of the splitter during operation. Do not split logs greater than 18 in. in length.

WORK AREA

NEVER operate the log splitter on slippery, wet, muddy or icy ground.

ONLY operate your log splitter on level ground. Operating on a slope could cause the log splitter to roll over or logs to fall off.

NEVER operate your log splitter in an enclosed area. Exhaust fumes contain carbon monoxide which can be deadly when inhaled.

NEVER attempt to move your log splitter over hilly or uneven terrain without a tow vehicle or adequate help.

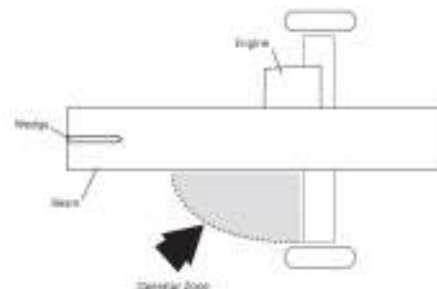
ALWAYS block the wheels to prevent movement of the log splitter while in operation.

ONLY operate your log splitter in daylight or under good artificial light.

ALWAYS keep the work area clean. Remove split wood around your log splitter immediately so that you don't stumble over it.

OPERATION OF THE LOG SPLITTER

ONLY operate the log splitter from the operator zone as shown in the diagram. The operator has the safest and most efficient access to the control valve and the beam in this location. Failure to operate the log splitter in this position can result in serious injury or death.





IMPORTANT SAFETY INFORMATION

KNOW how to stop the log splitter and disengage the controls before operating it.

NEVER place hands or feet between the log and splitting wedge during forward or reverse stroke. Serious injury or death could result.

NEVER straddle or step over the log splitter during operation.

NEVER reach or bend over the log splitter to pick up a log.

NEVER try to split two logs on top of each other.

NEVER try to cross split a log.

NEVER attempt to load your log splitter when the ram or wedge is in motion.

ALWAYS use your hand to operate the control lever on the valve. **NEVER** use your foot, a rope or any extension device.

NEVER move the log splitter while the engine is running. Shut off the engine even if you are leaving the log splitter for a short period of time.

ALWAYS avoid contact with the muffler and other hot areas of the engine during operation or after running to prevent burns.

REPAIR AND MAINTENANCE SAFETY

NEVER operate your log splitter when it is in poor mechanical condition or in need of repair.

Periodically check that all nuts, bolts, screws, hydraulic fittings and hose clamps are tight.

NEVER alter your log splitter in any manner. Such alterations may cause your log splitter to be unsafe and will void the warranty.

Perform all recommended maintenance procedures before using your log splitter.

Replace all damaged or worn parts immediately.

NEVER tamper with the engine to run it at excessive speeds. The maximum engine speed is preset by the manufacturer and is within safety limits. See engine manual.

ALWAYS remove the spark plug wire before performing any service or repair on your log splitter.

ALWAYS check the level of hydraulic oil and engine oil before operation.

ALL replacement parts must meet manufacturer's specifications.



IMPORTANT SAFETY INFORMATION

HYDRAULIC SAFETY

The hydraulic system of your log splitter requires careful inspection along with the mechanical parts. Be sure to replace frayed, kinked, cracked or otherwise damaged hydraulic hoses or hydraulic components.

NEVER check for leaks of hydraulic fluid with your hand. Fluid escaping from a small hole can be almost invisible. Escaping fluid under pressure can have sufficient force to penetrate skin causing serious personal injury or even death. Leaks can be detected by passing a piece of cardboard over the suspected leak and looking for discoloration.

ALWAYS seek professional medical attention immediately if injured by escaping hydraulic fluid. Serious infection or reaction can develop if proper medical treatment is not administered immediately.

ALWAYS be sure to relieve all pressure by shutting off the engine and moving the valve control handle back and forth should it become necessary to loosen or remove any hydraulic fitting.

NEVER remove the cap from the hydraulic tank or reservoir while the log splitter is running. Tank could contain hot oil under pressure that could result in serious injury.

NEVER adjust the hydraulic valve. The pressure relief valve on your log splitter is preset at the factory. Only a qualified service technician should perform this adjustment.

FIRE PREVENTION

NEVER operate your log splitter near a flame or spark. Hydraulic oil and gasoline are flammable and can explode.

NEVER fill the gas tank while the engine is hot or running. Allow the engine to cool before refueling.

NEVER smoke while operating or refueling your log splitter. Gas fumes can easily explode.

ONLY refuel your log splitter in a clear area with no gas fumes or spilled gas.

ALWAYS use an approved fuel container.

ALWAYS replace the gas cap securely.

If gasoline has spilled, move the log splitter away from the area of the spill and avoid creating any source of ignition until the spilled gas has evaporated.

ALWAYS take a Class B fire extinguisher with you when operating this log splitter in dry areas as a precautionary measure against possible flying sparks.

ALWAYS drain the fuel tank prior to storage to avoid the potential fire hazard.

ALWAYS store gasoline in an approved, tightly sealed container. Store the container in a cool, dry place.

NEVER store gasoline in the house or near a heating appliance.



IMPORTANT SAFETY INFORMATION

IMPORTANT NOTE:

This log splitter is equipped with an internal combustion engine and should not be used on or near any unimproved forest-covered, brush-covered or grass-covered land unless the engine's exhaust system is equipped with a spark arrester meeting applicable local or state laws (if any). If a spark arrester is used, it should be maintained in effective working order by the operator. In the state of California a spark arrester is required by law. Other states have similar laws. Federal laws apply on federal lands. A spark arrester muffler (optional by manufacturer) is available as an accessory at your nearest engine dealer. Always check the legal requirements in your area.

TOWING SAFETY

NEVER tow this log splitter on a road or highway. Serious injury and/or damage could result. This log splitter may be towed off road behind an ATV or lawn tractor. Low speed towing is strongly recommended.

NEVER carry any cargo or wood on your log splitter.

NEVER allow anyone to sit or ride on your log splitter.

ALWAYS disconnect your log splitter from the towing vehicle before operating it.

ALWAYS be careful when backing up with your log splitter in tow. It could jackknife.

ALWAYS allow for added length of your log splitter when turning, parking, crossing intersections and in all driving situations.

IMPORTANT NOTICE

We, the manufacturer, reserve the right to change the product and/or specifications in this manual without notification. The manual is for information usage only and the pictures and drawings depicted herein are for reference only.

ASSEMBLY INSTRUCTIONS

- NOTE:** This log splitter was partially assembled at the factory. Refer to the drawing and parts list should it become necessary to disassemble the unit for repair or replacement of parts.
- STEP 1:** Remove all the components from the crate. Inspect each piece for shipping damage. If any part is damaged, contact your dealer or delivering carrier.
- STEP 2:** Refer to the beam assembly drawing Illustration 2. Remove the bolts (22) and then move the tongue (21) to the desired position on the beam (1). Securely attach with the two 3/8" x 3-1/2" bolts (22) and 3/8" hex nuts (23). Tighten.
- STEP 3:** Refer to the general assembly drawing illustration 1. Using the four 7/16" x 1-1/2" bolts (8) and nuts (10), attach the beam assembly to the axle/frame assembly (1). Tighten.
- STEP 4:** Refer to the general assembly drawing illustration 1. Mount the wheels (2) to the axle/frame (1) using the 3/4" washers (4) and 1/8" x 1" cotter pins (3).
- STEP 5:** Refer to the general assembly diagram illustration 1. Attach the tongue stand (7) to the tongue using the lock pin (5).
- STEP 6:** Refer to general assembly diagram illustration 1. Attach the engine (14) to the frame assembly (1) using the four 5/16" x 1-1/2" bolts (6) and the four 5/16" hex nuts (9).
- STEP 7:** Refer to beam assembly drawing Illustration 2. Remove the bolts (13) and the cylinder retainers (14). Slide the cylinder (8) into the working position and securely fasten the cylinder retainers (14) using the two 5/16" x 5/8" bolts (13).
- STEP 8:** Connect the suction line (18) in beam assembly illustration 2 to the elbow (6) on the pump (5). See engine assembly illustration 3. Secure with the hose clamp (16) as shown in illustration 2. Attach the pressure hose (9) coming from the pump (5) in illustration 3 to the valve (6) as shown in illustration 2.
- STEP 9:** Fill the tank by inserting a funnel into the return line (15). See Illustration 2. Fill with approximately 2 gallons of hydraulic fluid until the fluid level is visible in the clear line with the tank level. SAE hydraulic oil is recommended. Automatic transmission fluid can be substituted and should be used when temperatures are below 32° F. Use only clean oil and take care to prevent dirt from entering the hydraulic reservoir.
- STEP 10:** Attach the return line (12) as shown in illustration 1 to the valve (6) as shown in illustration 2 and secure with hose clamp (16) from the hardware kit.
- STEP 11:** Add oil to the engine and fuel to the gas tank. See Engine Oil Recommendations on the following page. Refer to the engine owner's manual for more information.
- STEP 12:** Start the engine and then cycle the cylinder by pushing on the valve handle to remove air from the system.
- STEP 13:** Turn off the engine. Cycle the valve handle to relieve pressure and then disconnect the return line at the valve. Add approximately 1/2 gallon of hydraulic fluid until the fluid level is visible in the clear line with the tank level.
- STEP 14:** Reconnect the return line to the valve (6). Secure with a hose clamp (17) and tighten.

OPERATING INSTRUCTIONS



WARNING: Read and thoroughly understand all instructions and safety information before operating this log splitter. Failure to do so may cause serious injury or death. Do not allow anyone to operate this log splitter who has not read this manual. As with all power equipment, a log splitter can be dangerous if assembled or used improperly. Do not operate this log splitter if you have doubts or questions concerning safe operation. Call our customer service department at 1-800-525-8322 to address these concerns.

Si no entiende ingles, se prefiere que busque alguien que interprete las instrucciones para usted.



CAUTION:

DO NOT START OR RUN THE ENGINE BEFORE ADDING OIL IN THE HYDRAULIC RESERVOIR AND OIL IN THE ENGINE.

ENGINE OIL RECOMMENDATIONS

Use 4-stroke automotive detergent oil. SAE 10W-30 is recommended for general use. Refer to the SAE Viscosity Grades chart on page 17 of your engine owner's manual for average temperature ranges. The engine manufacturer recommends using API SERVICE Category SE or SF oil.

The engine oil capacity is 0.63 US qt. (0.6 L).

Always check oil level *before* starting the engine. Keep oil level at full.

STARTING INSTRUCTIONS

NOTE: REFER TO THE ENGINE OWNER'S MANUAL FOR COMPLETE INFORMATION ON STARTING, MAINTENANCE AND TROUBLE-SHOOTING.

- 1) Move the fuel valve lever to the ON position.
- 2) To start a cold engine, move the choke lever to the CLOSE position.
To restart a warm engine, leave the choke lever in the OPEN position.
- 3) Move the throttle lever away from the SLOW position, about 1/3 of the way toward the FAST position.
- 4) Turn the engine switch to the ON position.
- 5) Pull the starter grip until you feel resistance, then pull briskly. Return the starter grip gently.
- 6) If the choke lever has been moved to the CLOSE position to start the engine, gradually move it to the OPEN position as the engine warms up.
- 7) To stop the engine in an emergency, simply turn the engine switch to the OFF position. Under normal conditions, move the throttle lever to the SLOW position and then turn the engine switch to the OFF position. Then turn the fuel valve lever to the OFF position.

For further information on starting and stopping the engine, refer to your engine owner's manual.

NOTE: The engine maximum governed speed is preset at the factory at 3600 RPM no load speed. When splitting wood, the throttle should be set at the maximum setting to develop the horsepower required for the pump.

OPERATION



WARNING: See safety information related to operation of the log splitter on page 3 and 4 of this manual. Make sure that you have the recommended personal protective equipment described on page 1.

- 1) Set up the log splitter in a clear, level area and block the wheels. Make sure that the suction port on the tank is always on the lower side of the log splitter.
- 2) Place a log on the beam against the wedge. Make sure the the log is securely on the beam and up against the wedge.
- 3) With the engine running, depress the valve handle so that the cylinder will drive the ram into the log. Extend the cylinder until the log splits or to the end of its stroke. If the log has not completely split after the cylinder has reached the end of its extension, retract the cylinder.

IMPORTANT: Leaving the valve in the “actuate” position at the end of the stroke may damage the pump. Always use extra care when splitting logs with unsquare ends.

TOWING

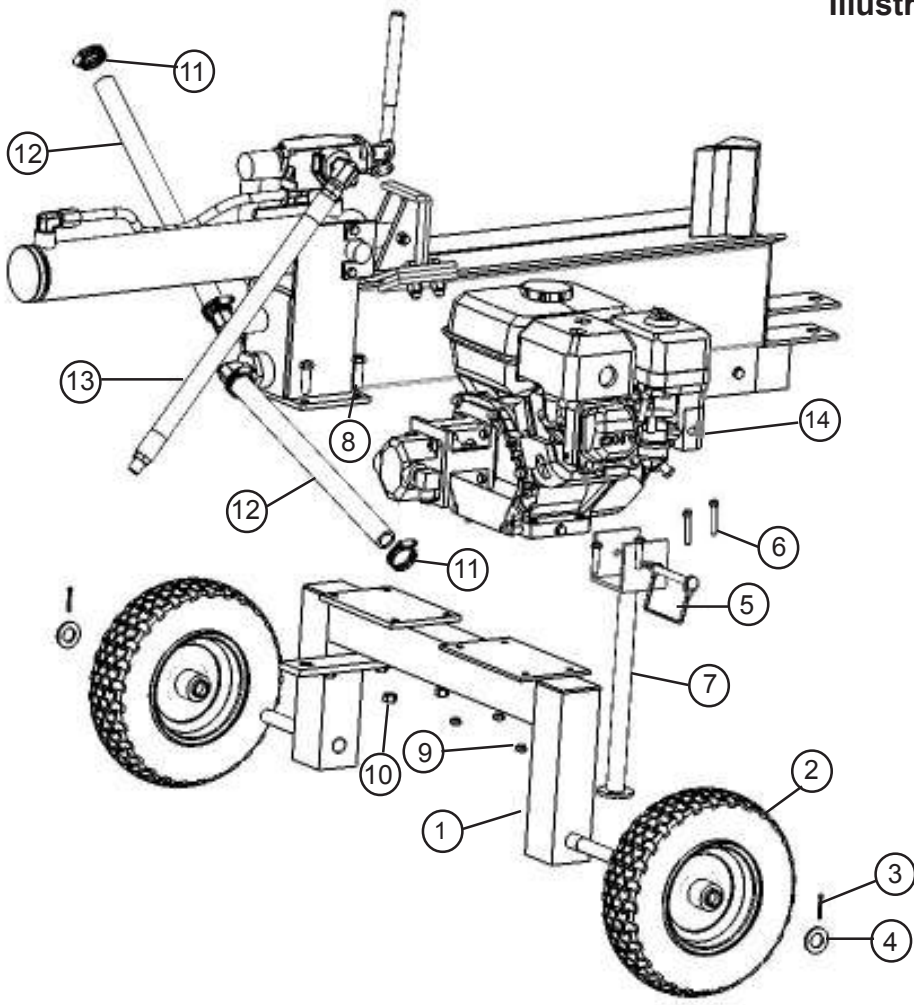
NEVER tow this log splitter on a road or highway. Serious injury and/or damage could result. This log splitter may be towed off road behind an ATV or lawn tractor. Low speed towing is strongly recommended.

MAINTENANCE

- 1) Consult the operating and maintenance instructions of the engine manufacturer for engine care and maintenance.
- 2) Always check the oil level of the hydraulic reservoir before operation. Operating the log splitter without an adequate oil supply will cause severe damage to the pump.
- 3) Clean the suction filter after the first 25 hours of operation. Thereafter, clean the oil filter every 100 hours or seasonally, whichever comes first.
- 4) If excessive clearance is found between the push plate (3) to beam mount, loosen push plate bolts and adjust the middle plate to approximately 1/8 in. gap on each side. Retighten bolts securely. Do not adjust plate too tightly or damage may result. Refer to illustration 2.
- 5) See also Repair and Maintenance Safety on page 4 of this manual.
- 6) All replacement parts must meet manufacturer’s specifications.

MODEL NO. 40151000 LOG SPLITTER

Illustration 1



Reference No.	Part No.	Description	Quantity
1	40117800	Frame/Axle	1
2	40035500	Tire	2
3	O/L	1/8" x 1" Cotter Pin	2
4	O/L	3/4" Washer	2
5	07096700	Lock Pin	1
6	O/L	5/16" x 1-1/2" Hex Cap Bolt	4
7	40128000	Ground Stand	1
8	O/L	7/16" x 1-1/2" Hex Cap Bolt	4
9	O/L	5/16" Nut	4
10	O/L	7/16" Nut	4
11	39031600	Hose Clamp	2
12	39038200	Suction Hose and Return Hose	2
13	39027700	Pressure Hose	1
14	39053900	6.5 HP SpeedCo Engine	1

MODEL NO. 40151000 LOG SPLITTER

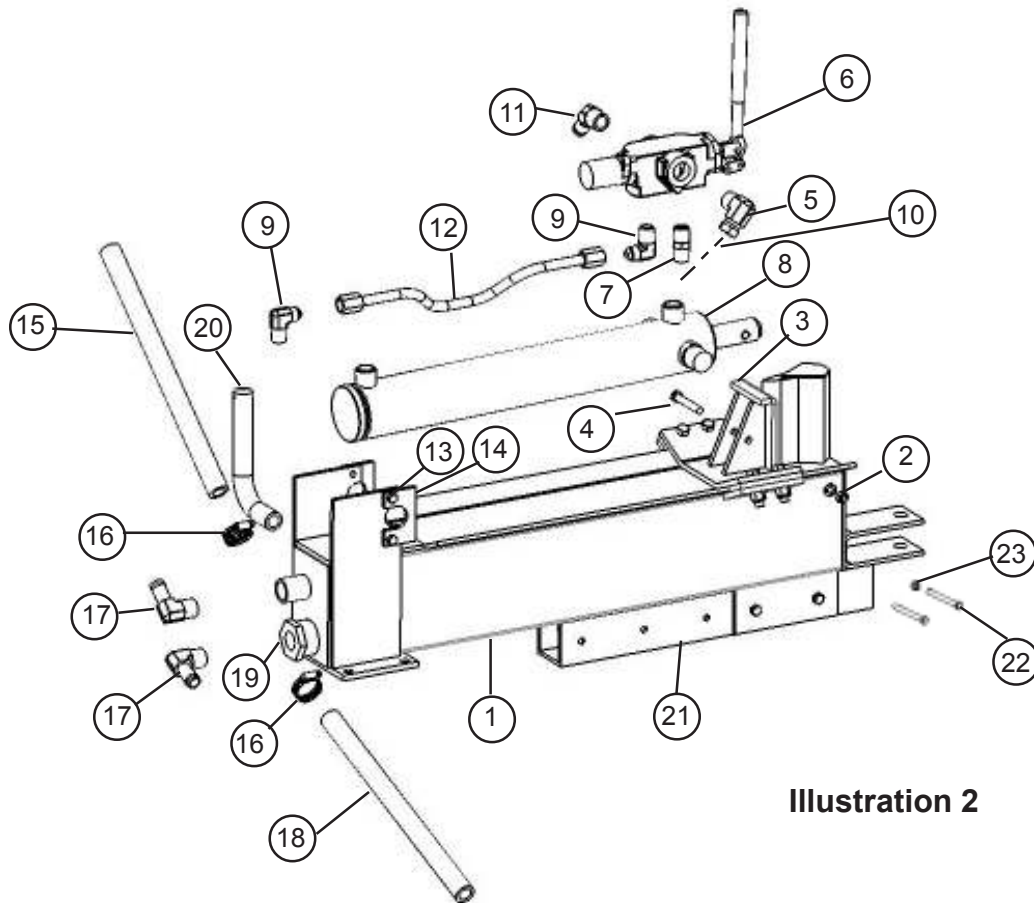
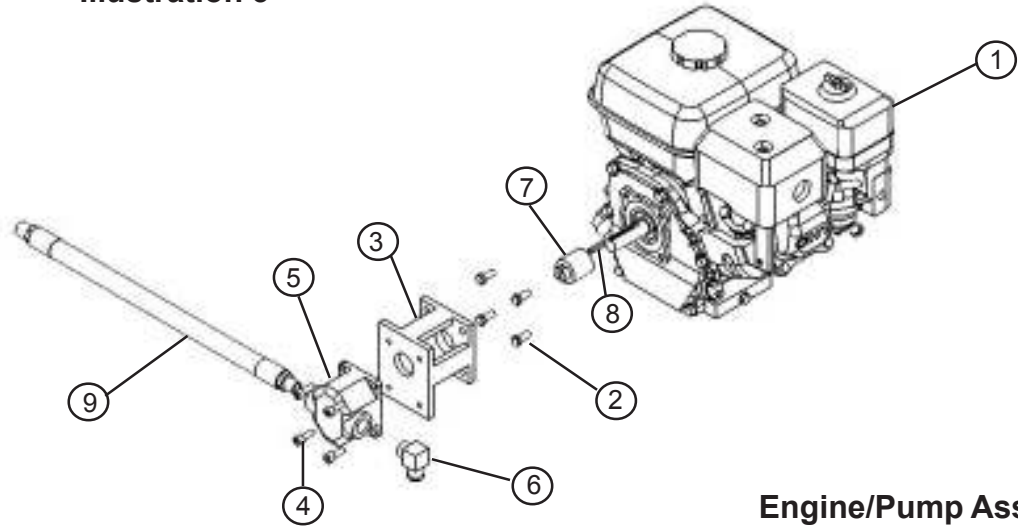


Illustration 2

Reference No.	Part No.	Description	Quantity
1	40128100	Tank/beam	1
2	O/L	3/8" Nylock Nut	1
3	40128300	Push Plate	1
4	O/L	3/8" x 2-1/2" Hex Cap Bolt	1
5	39039100	Swivel Elbow, 3/4", 1/2"	1
6	390410C0	Auto-Return Valve	1
7	39034300	1/2"-1/2" Hex Nipple	1
8	39013300	2-3/4" x 18" Cylinder	1
9	39031100	3/4 in. NPTF -1/2 in. NPTF Reducer Bushing	2
10	39027700	Pressure Hose (not shown)	1
11	39032400	3/4"x 45° Elbow	2
12	39038000	Hydraulic Cylinder Tubing	1
13	O/L	5/16" x 5/8" Hex Cap Bolt	4
14	40128500	Cylinder Retainer	2
15	39038200	3/4" x16" Return Hose	1
16	39031600	Hose Clamp	2
17	39032000	3/4" NPT-3/4" Tube 90°	2
18	39038200	3/4" x 16" Suction Hose	1
19	39090200	Suction Filter	1
20	40128900	Breather Tube	1
21	40127900	Tongue	1
22	O/L	3/8" x 3-1/2" Bolt	2
23	O/L	3/8" Nut	2

Illustration 3



Engine/Pump Assembly

Reference No.	Part No.	Description	Quantity
1	39053900	6.5 HP Speeco Engine	1
2	O/L	M9 x 1,25 x 29MM Bolt	4
3	40085400	Pump Mount	1
4	O/L	M7x 20 Allen Screw	4
5	39071600	Pump	1
6	39039200	3/8" NPT to 3/4" 90° Elbow	1
7	40085500	Coupler	1
8	40034800	Engine Key	1
9	39027700	Pressure Hose	1

IMPORTANT NOTICE

We, the manufacturer, reserve the right to change the product and/or specifications in this manual without notification. The manual is for information usage only and the pictures and drawings depicted herein are for reference only.

== NOTES ==

Model No. _____

Serial No. _____

Date of Purchase _____

Place of Purchase _____

SPECIFICATIONS

	MODEL NO.40151000
MAXIMUM SPLITTING FORCE	10 Tons
ENGINE	6.5 HP SpeeCo
CYLINDER	2.75" Diameter x 18" Stroke
VALVE	Auto-Return
PUMP	Single Stage 2.5 GPM
MAXIMUM LOG LENGTH	18"
CYCLE TIME *	19 Seconds
WHEELS	Low Speed Pneumatic Turf Tires
WEDGE	5" High
BEAM CRADLE SIZE	6.75"
TOTAL HYDRAULIC CAPACITY	2 Gallons
HEIGHT	36" To Top of Valve Handle
LENGTH	65"
WIDTH	34"
SHIPPING WEIGHT	240 lbs.
* Ideal case cycle time. Actual cycle time will vary depending on temperature, altitude, engine speed, pump efficiency, etc.	



A brand of Special Products Co.
 15000 W. 44th Ave. Golden Colorado 80403
 303-279-5544 Toll Free USA 800-525-8322 Fax 303-278-3432
 Email: speeco@speeco.com Web: www.speeco.com