

PIVOTING BLOWERS

PRODUCT INFORMATION

Motor

3-speed, 1/13 HP, 120V, 1 phase, totally enclosed, ball bearing, permanently lubricated, permanent split capacitor (model 9555)

3-speed, 1/16 HP, 120V, 1 phase, totally enclosed, ball bearing, permanently lubricated, permanent split capacitor (model 9550)

Controls

Side mounted rotary dial switch

Power Cord

Black, 10', 3-conductor with GFCI, SO type (model 9555)

Black, 10', 3-conductor, SO type (model 9550)

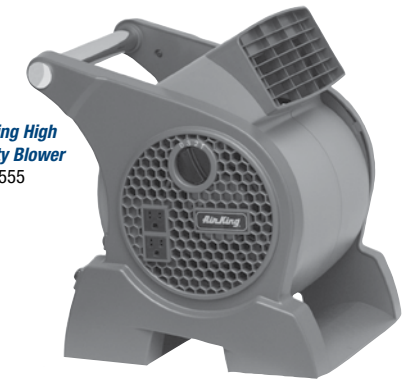
Construction

Molded ABS Plastic

Compliance

ETL, OSHA

Pivoting High Velocity Blower
9555



Pivoting Utility Blower
9550

BLADE SIZE	MOTOR SIZE	MODEL NUMBER	DESCRIPTION	CFM			AMPS			SHIP WEIGHT	LIST PRICE
				HIGH	MED	LOW	HIGH	MED	LOW		
7" x 7"	1/13 HP	9555	Pivoting High Velocity Blower	350	300	250	.94	.78	.70	12.8	\$180.00
6" x 6"	1/16 HP	9550	Pivoting Utility Blower	310	269	190	.80	.62	.50	10.1	\$120.00

Tested in accordance with AMCA standard 230-99. • Specifications are subject to change.

WINDOW FANS

PRODUCT INFORMATION

Motor

3-speed, 1/6 HP, 120V, 1 phase, totally enclosed, ball bearing, permanently lubricated, permanent split capacitor (model 9166)

3-speed, 1/6 HP, 120V, 1 phase, permanently lubricated, permanent split capacitor (model 9155)

Controls

Front mounted rotary switch

Power Cord

Black, 7', 3-conductor, SPT-2-R type (model 9166)

White, 7', 3-conductor, SPT-2-R type (model 9155)

Construction

Impact resistant plastic housing, powder coated steel front grill and blade (model 9166)

High impact styrene housing, ABS plastic blade, and metal front grill (model 9155)

Compliance

ETL, OSHA

Window Size Requirements

27" to 38" x 26.25"H (model 9166)

26.5" to 34.5" x 22"H (model 9155)



Whole House Window Fan
9166



Window Fan
9155

BLADE SIZE	MOTOR SIZE	MODEL NUMBER	DESCRIPTION	CFM			AMPS			SHIP WEIGHT	LIST PRICE
				HIGH	MED	LOW	HIGH	MED	LOW		
20"	1/6 HP	9166	20" Whole House Window Fan	3560	3120	2510	1.40	1.30	1.0	36.0	\$280.00
16"	1/6 HP	9155	16" Window Fan	2470	1700	1360	.83	.55	.45	15.0	\$180.00

Tested in accordance with AMCA standard 230-99. • Specifications are subject to change.

