

Job Name/Location: _____

Tag #: _____

Date: _____

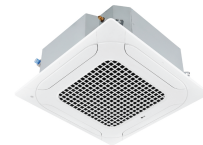
For:	File	Resubmit
	Approval	Other_____

PO No.: _____

Architect: _____ GC: _____

Engr: _____ Mech: _____

Rep: _____
(Company) (Project Manager)



LC369HV

Single Zone 3x3 Four-Way Ceiling Cassette

Indoor Unit (IDU) - LCN369HV, Outdoor Unit (ODU) - LUU360HV

Performance:

Cooling:

Cooling Capacity (Min~Rated~Max) (Btu/h)	14,400 ~ 36,000 ~ 42,000
SEER2	21
EER2	12.5

SEER - Seasonal Energy Efficiency Ratio

EER - Energy Efficiency Ratio

Heating:

Heating Capacity (Min~Rated~Max) (Btu/h)	16,000 ~ 40,000 ~ 42,200
HSPF2	10
Max. Heating @ Indoor 70°F DB	38,000
Outdoor 17°F DB	35,000
Outdoor 5°F DB	31,450
Outdoor -4°F DB	31,450

HSPF - Heating Seasonal Performance Factor

Electrical:

Power Supply (V/Hz/Ø)	208-230/60/1
MOP (A)	40
MCA (A)	32
Cooling Rated Amps (A)	26.3
Heating Rated Amps (A)	26.3
Compressor (A)	22.0
Fan Motor (IDU + ODU) (A)	1.1 + 1.6 x 2
Cooling Power Input (kW)	2.88
Heating Power Input (kW)	3.26

MOP - Maximum Overcurrent Protection

MCA - Minimum Circuit Ampacity

Piping:

Liquid (in., O.D.)	3/8
Vapor (in., O.D.)	5/8
Additional Refrigerant (oz./ft.)	0.43
Min. / Max. Pipe Length (ft.) ²	16.4 / 246
Piping Length (no add'l refriger., ft.)	24.6
Max. Elevation (ft.)	98.4

Features:

- Inverter (Variable Speed Compressor)
- Auto Changeover
- Internal Condensate Pump
- Ultra-quiet Turbo Fan
- Swirl Wind / Jet Cool
- Night Quiet Operation
- Auto Restart
- Optional Wi-Fi Control

Included Accessories:

- Wireless Remote Controller - AKB75735404

Required Accessories:

- Panel - PT-AAGW0

Optional Accessories:

- Premium Panel (incl. Panel PT-AFGW0 + Air Purif. Kit PTAHMP0)-PT-AFGW0S
- Auto Elevation Kit-PTEGMO
- Decorative Cover-PTDCA
- Ventilation Kit + Flange³-PTVK410 + PTVK420
- Flange³-PTVK430
- MultiSITE™ CRC* Controller- PREMTBVC2/C3/C4
- Simple Remote Controller-PREMT000 Standard III Remote Controller (White / Black)-PREMTB100 / PREMTBB10
- Remote Temperature Button Sensor-ZRTBS01
- Simple Dry Contact (1 contact, 24 VAC external power)-PDRYCB100
- Dry Contact for Third Party Thermostat-PDRYCB320
- Dry Contact for Economizer-PDRYCB400
- AC Smart 5 Central Controller-PAC55A000
- LonWorks® Gateway-ZHWLONWK0
- MultiSITE Comm. Mgr.-PBACNBTR0A
- PI-485-PMNFP14A1
- ACP 5 BACnet Gateway-PACPSA000
- AHU Communication Kit-PAHCMR000
- Auxillary Heater Kit⁵-PRARH1
- Wi-Fi Module-PWFMDD200
- Drain Pan Heater-PQSH1200
- Low Ambient Wind Baffle (Cooling operation to -4°F)-ZLABGP04A Requires 2

Operating Range:

Outdoor Unit:

Cooling (°F DB)	5 ~ 118
Heating (°F WB)	-4 ~ +64

Indoor Unit:

Cooling (°F WB)	57 ~ 77
Heating (°F DB)	59 ~ 81

System Data:

Refrigerant Type	R410A
Refrigerant Control	EEV
Refrigerant Charge (lbs.)	7.5
IDU Sound Pressure (Mx/H/M/L/SL) (±1 dB[A]) ³	55 / 44 / 42 / 41 / 40
ODU Sound Pressure (Cooling / Heating) (±1 dB[A]) ³	52 / 54
ODU Net / Shipping Weight (lbs.)	193.1 / 217.4
IDU Net / Shipping Weight (lbs.)	56.4 / 67.7
Grille Net / Shipping Weight (lbs.)	15.6 / 20.5
Heat Exchanger Coating	GoldFin™

Fan:

ODU Type	Propeller
IDU Type	Turbo
Fan Speeds (Fan/Cool/Heat)	4 / 5 / 5
Quantity (ODU + IDU)	2 + 1
Motor/Drive	Brushless Digitally Controlled/Direct
ODU Air Flow Rate (CFM)	2 x 1,942
IDU Air Flow (CFM Max/H/M/L)	1,200 / 971 / 883 / 794
Dehumidification (pts./hr.)	7.1

Notes:

1. Acceptable operating voltage: 187V-253V.
 2. Piping lengths are equivalent.
 3. Must comply with applicable codes for fire isolation dampers.
 4. Sound Pressure levels are tested in an anechoic chamber under ISO Standard 3745.
 5. All communication / connection (power) cable from the outdoor unit to the indoor unit is field supplied and must be a minimum of four-conductor, 14 AWG, stranded, shielded or unshielded (if shielded, it must be grounded to the chassis of the outdoor unit only), and must comply with applicable local and national codes.
 6. This unit comes with a dry helium charge.
 7. This data is rated 0 ft. above sea level, with 24.6 ft. of refrigerant line and a 0 ft. level difference between outdoor and indoor units.
 8. Power wiring cable size must comply with the applicable local and national code.
 9. Must follow installation instructions in the applicable LG installation manual.
- BACnet® is a registered trademark of ASHRAE. LonWorks® is a trademark of Echelon Corporation.



Proper sizing and installation of equipment is critical to achieve optimal performance. Split system air conditioners and heat pumps (excluding ductless systems) must be matched with appropriate coil components to meet ENERGY STAR® criteria. Ask your contractor for details or visit www.energystar.gov. (ENERGY STAR and the ENERGY STAR mark are registered trademarks owned by the U.S. Environmental Protection Agency.)



162279



For a complete list of available accessories, contact your LG representative.

For continual product development, LG reserves the right to change specifications without notice.

© LG Electronics U.S.A., Inc., Englewood Cliffs, NJ. All rights reserved. "LG Life's Good" is a registered trademark of LG Corp. /www.lghvac.com

SB_SZ_FourWayCassette3x3_LC369HV_2023_08_10_144015

Page 1 of 3

LC369HV

Single Zone 3x3 Four-Way Ceiling Cassette

Indoor Unit (IDU) - LCN369HV, Outdoor Unit (ODU) - LUU360HV



Tag No.: _____

Date: _____

PO No.: _____

