



PARTS BREAKDOWN PRESSURE WASHER

MODEL: B4024HTBA



BEPOWEREQUIPMENT

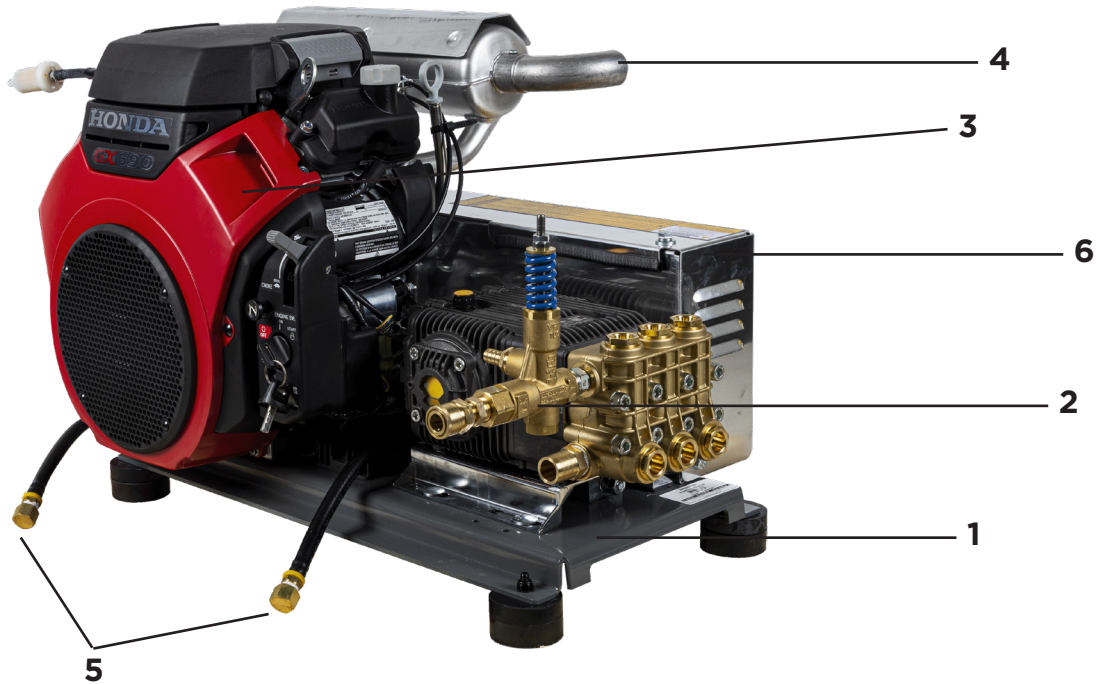
.COM



PARTS BREAKDOWN PRESSURE WASHER

MODEL: B4024HTBA

UNIT COMPONENTS



REF #	DESCRIPTION	QTY	BE PART #
1	TRUCK MOUNT STEEL FRAME	1	85.600.238
2	PUMP ASSEMBLY - AR XW3028N	1	85.129.071
	VRT100 UNLOADER	1	85.300.033
	3/8" COUPLER	1	85.300.108
	AR MOUNTING PLATE	1	85.601.060
	1/2 X 3/8" BUSHING	1	85.709.086
3	HONDA GX 690 ENGINE	1	85.510.690
4	SIDE-MOUNTED EXHAUST	1	85.550.008
5	OIL DRAIN HOSE	2	85.400.074
6	BELT GUARD ASSEMBLY	1	85.602.223
	3.65" PULLEY	1	85.603.045
	8" PULLEY	1	85.603.047
	1-1/8" BUSHING	1	85.603.046
	24MM BUSHING	1	85.603.048
	COGGED BELT 45"	1	47.002.045

***CHECK WITH HONDA FOR GX690 ENGINE BREAKDOWN AND PARTS**

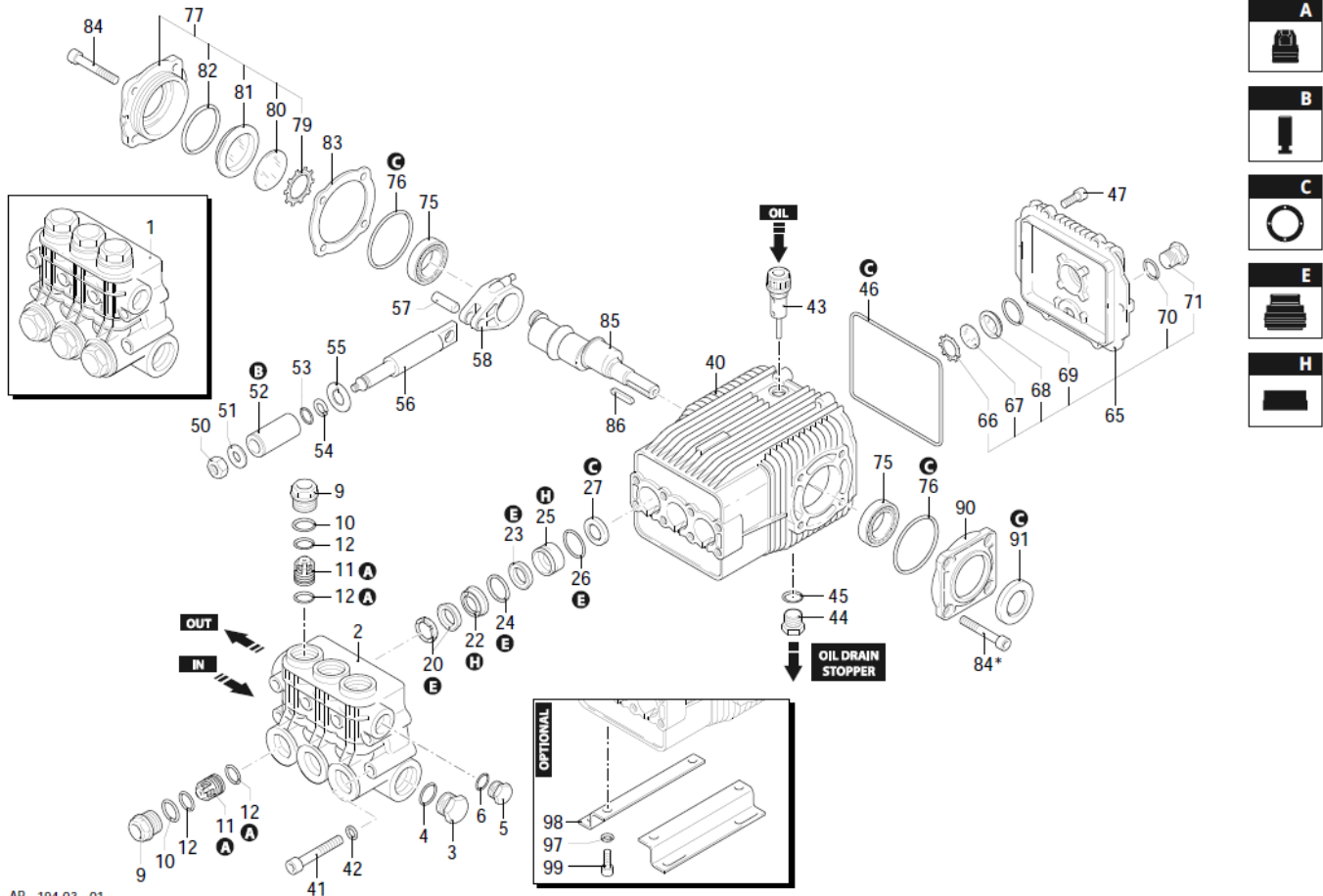


PARTS BREAKDOWN PRESSURE WASHER

MODEL: B4024HTBA

PUMP BREAKDOWN 85.129.071

AR XW 30.28N DX B.B.
28548



AR_194-03_01

29/0

- XW 30.28 N



PARTS BREAKDOWN PRESSURE WASHER

MODEL: B4024HTBA

PUMP BREAKDOWN 85.129.071

AR XW 30.28N DX B.B.
28548

P	Code	Description		Q	Note	Validity
1	1949203	Head assembly	Ø 22	1		
2	1941210	Head		1		
3	1140300	Plug	3/4" G	1	C=35Nm	
4	550350	O-ring	Ø 23,81x2,62	1		
5	1980740	Plug	3/8" G brass	1	C=20Nm	
6	740290	O-ring	Ø 14x1,78	1	Lubricate with grease Molykote PG54	
9	1940140	Plug		6		
10	1940150	Ring	anti-extrusion	6		
11	1949050	Complete valve		6		
12	1140450	O-ring	Ø 20,24x2,62	12	Lubricate with grease Molykote PG54	
20	1940270	Gasket	Ø 22	3	Lubricate with grease Molykote PG54	
22	1940200	Piston guide	front Ø 22	3		
23	1940480	Gasket	Ø 22	3	Lubricate with grease Molykote PG54	
24	1941220	O-ring	cut Ø 22	3		>I 26/22
24	2283660	O-ring	cut Ø 22	3		I> 27/22
25	1940460	Piston guide	rear Ø 22	3		>I 26/22
25	1944630	Piston guide	rear Ø 22	3		I> 27/22
26	820490	O-ring	Ø 34,65x1,78	3		
27	1940560	Ring	seal	3		
40	1941330	Pump body		1		
41	1940260	Screw	TCEI M10x80	8	C=50Nm	
42	650530	Washer		8		
43	1140370	Plug		1		
44	1980740	Plug	3/8" G brass	1	C=20Nm	
45	740290	O-ring	Ø 14x1,78	1	Lubricate with grease Molykote PG54	
46	1940410	O-ring	Ø 132x3	1		
47	1200430	Screw	TCEI M6x16	6	Screw with Loxeal 55-14 / C=10Nm	
50	1940570	Nut		3	Screw with Loxeal 55-14 / C=20Nm	
51	1940580	Washer		3		
52	1420120	Piston	Ø 22	3		
53	880840	O-ring	Ø 9,25x1,78	3	Lubricate with grease Molykote G807	
54	1940120	Ring	anti-extrusion	3		
55	960460	Plate		3		
56	1940070	Piston	guide	3		
57	1940060	Pin		3		
58	2520370	Connecting-rod	bronze	3	Lubricate with grease Molykote BR2 PLUS	
65	1949010	Cover	complete	1		
66	1260430	Ring		1		



PARTS BREAKDOWN PRESSURE WASHER

MODEL: B4024HTBA

PUMP BREAKDOWN 85.129.071

AR XW 30.28N DX B.B.
28548

P	Code	Description	Q	Note	Validity
67	1780690	Plate	1		
68	1260250	Level gauge	1		
69	1140450	O-ring	1	Lubricate with grease Molykote PG54	
70	740290	O-ring	1	Lubricate with grease Molykote PG54	
71	1980740	Plug	1	C=20Nm	
75	1140410	Bearing	2		
76	1941380	O-ring	2		
77	1949011	Cover	1		
79	1941290	Ring	1		
80	1941260	Plate	1		
81	1941270	Level gauge	1		
82	100410	O-ring	1		
83	1941390	Shim 0.05mm	1		
83	1941400	Shim 0.10mm	1		
83	1941410	Shim 0.19mm	1		
83	1941420	Shim 0.25mm	1		
84	850370	Screw	4	C=24,5Nm	
84*	850370	Screw	4	C=24,5Nm	
85	1940160	Shaft	1	1 marked	
86	650250	Key	1		
90	1941240	Support	1		
91	820681	Ring	1	Screw with Loxseal 55-14 / C=10Nm	
97	200231	Washer	4		
98	1940370	Foot	2		
99	1940380	Screw	4	C=50Nm	
A	2780	Valve kit	1		
B	1891	Piston kit	1	Ø 22	
C	2873	Oil seal kit	1		
E	2783	Water seal kit	1	Ø 22	
E	2779	Water seal kit	1	Ø 22 Viton	
H	2785	Piston guide kit	1	Ø 22	>I 26/22
H	47164	Piston guide kit	1	Ø 22	I> 27/22

Revision: 1

Date: 29/05/2023

Oil type: SAE 15W40

Oil quantity: 0,870 Kg

Attachment:

C=Tightening torque (Tolerance +0 ± -10%)

* = Not present for electric pump

28548 - XW 30.28 N

BE

POWER EQUIPMENT

If you need technical assistance call:

1-866-850-6662

(8:00am - 4:30pm PST, Mon - Fri)