



# OWNER'S MANUAL

## INSTALLATION INSTRUCTIONS

VISITEZ NOTRE SITE WEB POUR LA VERSION FRANÇAISE DE CE MANUEL  
VISITE NUESTRA PÁGINA WEB PARA LA VERSIÓN EN ESPAÑOL DE ESTE MANUAL  
<https://www.williamscomfort.com/product/mirada-infrared-heated-mirror/>

# MIRADA™ HEATED MIRROR



### MOUNTING INSTRUCTIONS HEATED MIRROR

HM040/HM0640/HM0760



# GENERAL/SAFETY INFORMATION

## PRODUCT DESCRIPTION

The Mirada Heated Mirror is an infrared radiant heater that transfers heat to objects through infrared radiation. The warmed objects then in turn give off heat to the environment.

The mirror is equipped with a safety temperature limit switch that switches off the product in the event of overheating and automatically switches it back on again once it has cooled down.

The mirror should be used in combination with the following components:

- Wireless thermostat
- Wireless surface-mounted receiver wireless plug socket receiver

The mirror can be mounted on walls or ceilings.

The maximum surface temperature with an ambient temperature of 68°F is: 230 °F (239 °F when mounted on ceiling).

## PRODUCT COMPOSITION

Back side:

- 1 Infrared heating
- 2 Wall bracket (V bracket)
- 3 Inlet connector for non-heating appliances



## CHECK THE COMPLETENESS AND CONDITION OF THE PACKAGE CONTENTS

Check the contents for completeness and proper condition.

Quantity	Designation
1 piece	Infrared radiant heater with preassembled connection cable and wall brackets (V-brackets)
1 piece	Drilling template
1 piece	Standard fastening set
1 piece	Operating manual

Improper use or use not as intended may result in danger to the life and limb of the user or third parties or cause damage to the product and other material damages.

The product is used to increase the room temperature in closed spaces. Read all instruction before use.

- In the event of improper use or use not in accordance with the intended purpose, the manufacturer accepts no responsibility for safety or functionality.
- All electrical connections must be made by a trained and certified electrician.
- The LED light bulb is not replaceable.
- Remove the unit from its packaging and check to make sure it is in good condition before using.
- Do not let children play with parts of package (such as plastic bags).
- Check the household voltage to ensure it matches the heater's rated specification.
- Check the power cord and plug carefully before used, to make sure that they are not damaged.
- Before unplugging the power cord, be sure to turn off the power, when energizing the unit, be sure your hands are dry to prevent from electric shock.
- To protect against electric shock, do not immerse cord or plug in water or any other liquid. Connect to properly grounded outlets only.
- Always plug heaters directly into a wall outlet/receptacle. Never use with an extension cord or relocatable power tap (outlet/power strip).
- Do not allow cord to overhang the counter top where it can be easily pulled by children.
- Keep children younger than 3 years of age away from the system, unless they are constantly supervised.
- Children above 3 years of age and younger than 8 may only switch the product on/off if they are supervised or have been instructed in the safe use of the product and fully understand the resulting hazards that may occur, assuming that the product is placed or installed in its normal position of use. Children above 3 years of age and younger than 8 must not insert the plug into the power socket, adjust the product, clean the product nor should they perform maintenance as the user of the product.
- Some product parts can get very hot and cause burns. Special care should be taken if children and vulnerable persons are present.
- Not for commercial or industrial use



## RECYCLING AND DISPOSAL

- This heater contains materials and substances that are harmful to the environment. Do not dispose of the light frame/heater or the associated components in the household waste.
- Instead, Take the heater to a collection point for electric or electronic waste.

# SAFETY

## ACTION-RELATED WARNINGS

The action-related warnings are graded as follows with warning signs and signal words relating to the severity of the potential hazard:

Danger! Immediate danger to life or danger of severe personal injury



Danger! Danger to life due to electric shock



Warning! Danger of minor personal injury



Caution! Risk of material or environmental damage



## DANGER DUE TO INCORRECT OPERATION

Incorrect operation may endanger you and others around you and cause material damage.

- Carefully read through this manual and all accompanying documentation.
- Only carry out those activities that this operating manual instructs you to do.

## RISK OF MATERIAL DAMAGE DUE TO OVERHEATING

Ensure that the product is not covered by fabric or other materials.



## DANGER DUE TO INADEQUATE QUALIFICATION

Only personnel with sufficient qualification for the task on hand may carry out the following work: assembly, disassembly, installation, commissioning, inspection and maintenance, repairs and decommissioning.

- Observe all product-related instructions.
- Comply with all relevant guidelines, norms, laws and other provisions

## DANGER TO LIFE DUE TO ELECTRIC SHOCK

A danger to life due to electric shock exists whenever live components are touched.



Before working on the product:

- Unplug the power connector.
- Or de-energize the product by switching off all power supplies (electric isolator with at least a .12" contact opening, such as a fuse or circuit breaker).
- Secure against reconnection.
- Check for the absence of voltage.

## RISK OF BURNING OR SCALDING DUE TO HOT COMPONENTS

Only work on components once they have cooled down.



## RISK OF MATERIAL DAMAGE DUE TO USE OF UNSUITABLE TOOLS

Use the correct size tool to tighten or loosen screw connections.



# ASSEMBLY

## SAFETY NOTE FOR CEILING MOUNTING AND MOUNTING INSTRUCTIONS OF GLASS HOLDERS



Ceiling mounting of glass heaters is strictly prohibited without the use of the glass holders! In case of improper use or use not in accordance with the instructions, the manufacturer assumes no responsibility for safety.

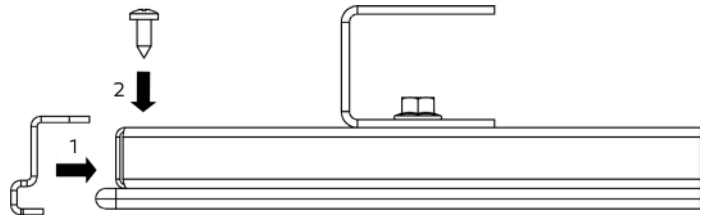
## ACCESSORIES

Glass holder set 14171 (sold separately) for angular glass heaters consisting of two white glass holders and two drilling screws.

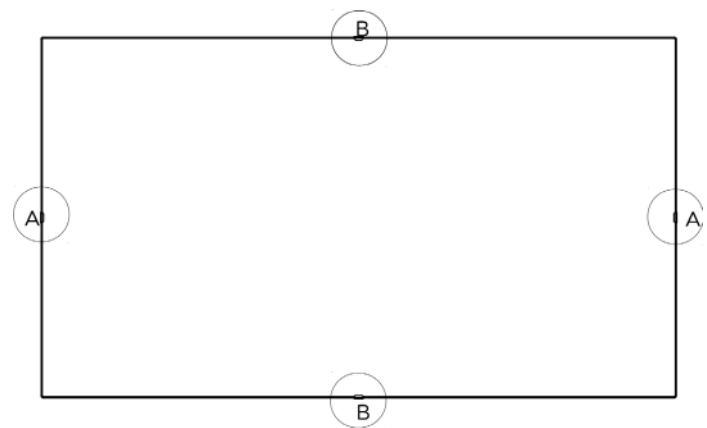
## MOUNTING OF THE GLASS HOLDER

1. Place the glass holders opposite to each other.
2. Screw the glass holder directly to the rear wall by using the drilling screws.

Alternatively, you can also pre-drill (hole  $\varnothing$  max. .1").



The recommended positions are combinations A-A or B-B. Alternatively, both combinations are also possible

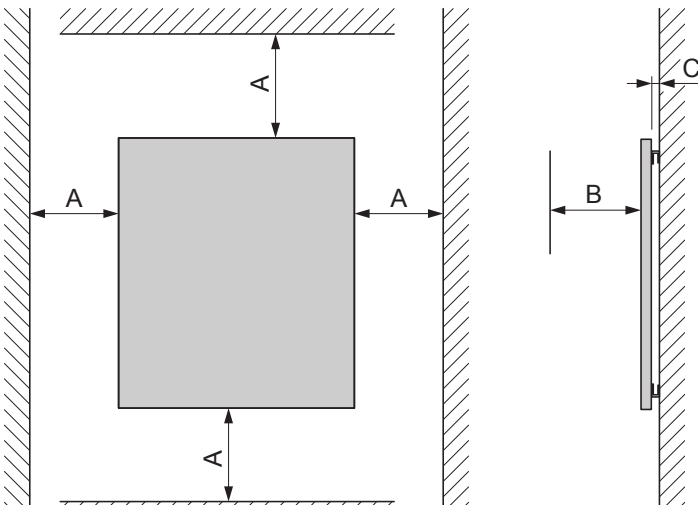


# ASSEMBLY

## REQUIREMENTS FOR THE INSTALLATION SITE

- Do not install the product immediately below a wall outlet.
- Do not install the product in rooms with excessive humidity.
- Do not install the product outside enclosed spaces or in areas where it could be exposed to water or moisture, e.g. swimming pool.
- Do not install the product or its connection socket with cables in the protection zone 1 and 2 of wet areas.
- Note that the room temperature should be at least 62°F and keep the floor areas and heaters clean in order to avoid any fogging effect.

## MINIMUM DISTANCES



A = 8" B = 15.75" C = 1.2"

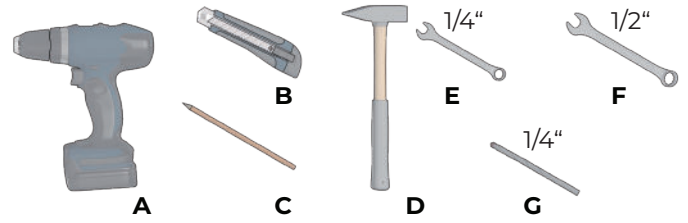
Make sure you do not fall below the minimum distance (C) between the rear wall and ceiling/wall predetermined by the fixing brackets (V brackets).

Ensure that continuous air circulation is possible between the rear wall and the ceiling or wall.

Keep a minimum distance of 23" in all directions in areas of IP classes 65/67.

# INSTALLATION

## RECOMMENDED TOOL



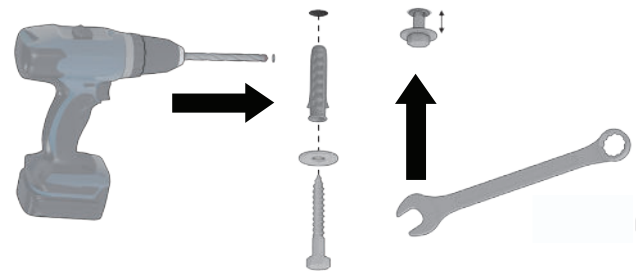
- A. Cordless screwdriver or electric drill
- B. Cutter knife or Stanley knife
- C. Pencil or ballpoint pen
- D. Hammer
- E. Wrench with 1/4" WAF (open-end or ring)
- F. Wrench with 1/2" WAF (open-end or ring)
- G. 1/4" drill suitable for the material of your wall or ceiling

## ASSEMBLY TEMPLATE

- Use the accompanying assembly template to determine the position of the drilling holes for product installation to the wall or ceiling. Always pay attention to the requirements for the installation site and the necessary minimum distances (see previous page).
- We recommend using a spirit level when mounting onto a wall to ensure a vertical mounting position.

## ASSEMBLY

1. First drill the required holes at the previously marked positions using an 1/4" drill suitable for the material of your wall or ceiling.
  - Drill 4 holes for heaters up to max. 48" length.
  - Drill 6 holes for heaters from 60" length.



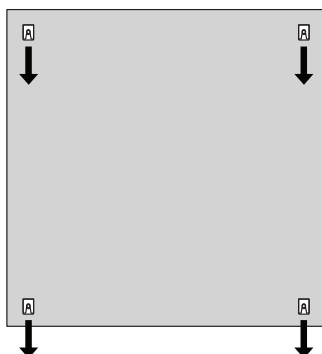
The accompanying drilling template will also specify the number of holes. Please ensure correct positioning of the drilling holes for optimum mounting of the wall bracket (V-brackets) to be screwed on later.

Use (if suitable for the material of your wall or ceiling) the supplied dowels, lag bolts and washers from the "Standard fixing set" supplied with the heater.

2. Insert the dowels into the holes (drive in with a hammer if necessary) and screw in the screws with washers using a 1/2" wrench. Do not completely tighten the screws. Make sure there is .15" of space between the washer and the wall/ceiling.

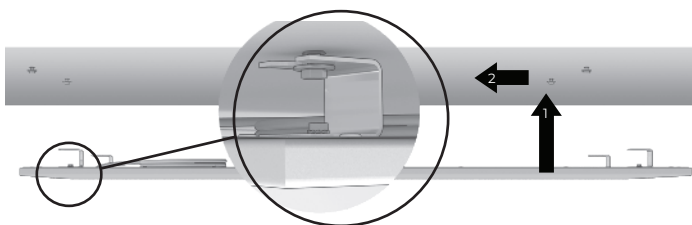
# INSTALLATION

3. Check whether all wall brackets (V brackets) of your heater point in the same direction with the opening. If not, align the V-brackets uniformly in one direction. It doesn't matter which direction it is.



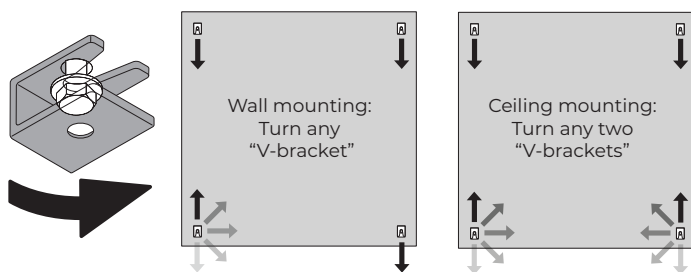
In case of ceiling assembly, make sure the next assembly step is undertaken by two people. Have a ladder at hand (if required).

4. Lift the heater to the mounting position so that the openings of the V-brackets are situated directly in front of the screws that are already in place.



5. Slide the heaters sideways until the screws are fully engaged into the V-brackets. Pay attention to the washers.

6. Lock the heater in place by rotating the V-brackets 180°:



7. Tighten all 8 or 12 screws using both 1/4" and 1/2" wrench. Check the secure fitting of the heater.

## ESTABLISHING THE POWER SUPPLY

**CAUTION! RISK OF MATERIAL DAMAGE DUE TO EXCESSIVE CONNECTION VOLTAGE!**

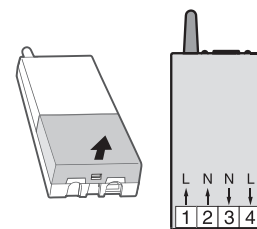


Electronic components can be destroyed with main voltages over 125 volts. Ensure that the rated voltage at any time is 115 Volts (+/- 5 Volts).

The infrared heater is connected directly to the wireless receiver with a 6" three-wire cable.

## WIRELESS RECEIVER MR0010

Attention! The wireless receiver MR0100 must only be electrically connected by a qualified electrician!



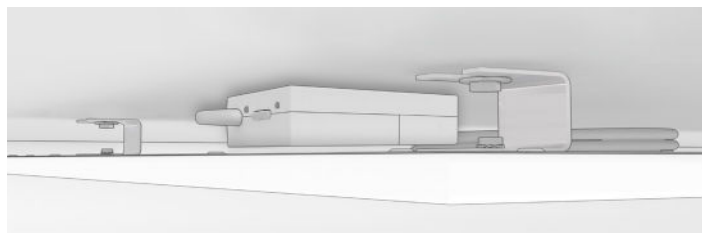
- Connect the phase conductor (live) of the main network to terminal 4.

- Connect the neutral wire of the main network to terminal 3.
- Connect terminal 2 to the blue connection cable of the infrared heater.
- Connect terminal 1 to the brown connection cable of the infrared heater.
- Connect the earth line of the main network to the yellow-green connection cable of the infrared heater.

The receiver may only be positioned at the edge of the heating system or attached to the ceiling.

## CAUTION:

**FIX THE RECEIVER TO THE WALL - NOT THE BACK SIDE OF THE MIRROR. DANGER OF OVERHEATING!**



## OPERATION

Switch on the power supply to the heater.

## STARTING THE HEATER

If you do not sense a feeling of warmth immediately, then leave the heater in operation for an extended period of time until the indoor climate becomes suitably pleasant.

- A pleasant feeling of warmth will be felt once all solid bodies have been heated.

## CONDITION: INITIAL COMMISSIONING

Activate all wireless control components that are to be used. Refer to their operating instructions on how to do this.

# TROUBLESHOOTING

## IDENTIFYING AND RECTIFYING

If the mirror is not giving out any heat, check whether the heater is covered or blocked in any way. It is possible that the safety temperature limit switch integrated into the heater has switched the heater off. If so, wait until after the heater has cooled down. The heater will automatically switch back on.

## MAINTENANCE

The surface colour of the heater may alter due to pollution in the indoor air, such as from cigarette smoke, fireplace/stove residues or cooking fumes.

- Clean the heater after it has cooled down and at regular intervals using a damp cloth and some solvent-free glass cleaner.

Caution! There is a risk of material damage if unsuitable cleaning agents are used!

 **WILLIAMS**<sup>TM</sup>

[www.williamscomfort.com](http://www.williamscomfort.com) | 888-444-1212 | 250 West Laurel Street, Colton CA 92324 USA

Subject to change without notice | © 2023

