



Phantom 080B-180B
Residential & Commercial High Efficiency
Gas Boilers

PHNTM Submittal Sheet

PHNTM Wall Mount and Floor Standing Heating Boilers

Wholesaler
Job Name
Mech. Contractor
Model No.
Gas Type
BTU/hr INPUT
BTU/hr OUTPUT
Venting Application

Standard Features

- ASME Constructed Stainless Steel Water Tube Heat Exchanger
30 psi Relief Valve
180F Maximum Operating Supply Temperature
Energy Star Qualified
95.0% AFUE
Fully Modulating Burner System with 10:1 Turndown Ratio
Vent Adapter Allows For 3" CPVC/PVC or Single Wall Polypropylene Venting with Optional Concentric Vent Terminals
Note: See Installation Manual for a List of Approved Vent Systems, Vent Length Limitations, and Other Installation Requirements
Built-In Boiler Loop Circulator
Compact Wall Mount Installation with Included Bracket
Tight Clearances to Combustible Material
Field Convertible to LP Gas with optional kit
Microprocessor Based Honeywell Sola Control System with Touch Screen
User Interface Consisting of:
o Direct Spark Ignition System
o Supply, Return, Flue, and Outdoor Sensors & Flow Switch
o Boiler Water Reset Function
o Selectable DHW Priority
o Output Terminals for Heating and DHW Circulators
o External Limit and Alarm System Terminal Contacts
o Plugable LWCO Connection (LWCO Optional)
o MODBUS Boiler-To-Boiler Communication Network Connections For Multiple Boiler Installations
o Terminal Contacts for Optional Header Sensor
12 Year Limited Heat Exchanger Warranty, 5 Year Warranty On Parts

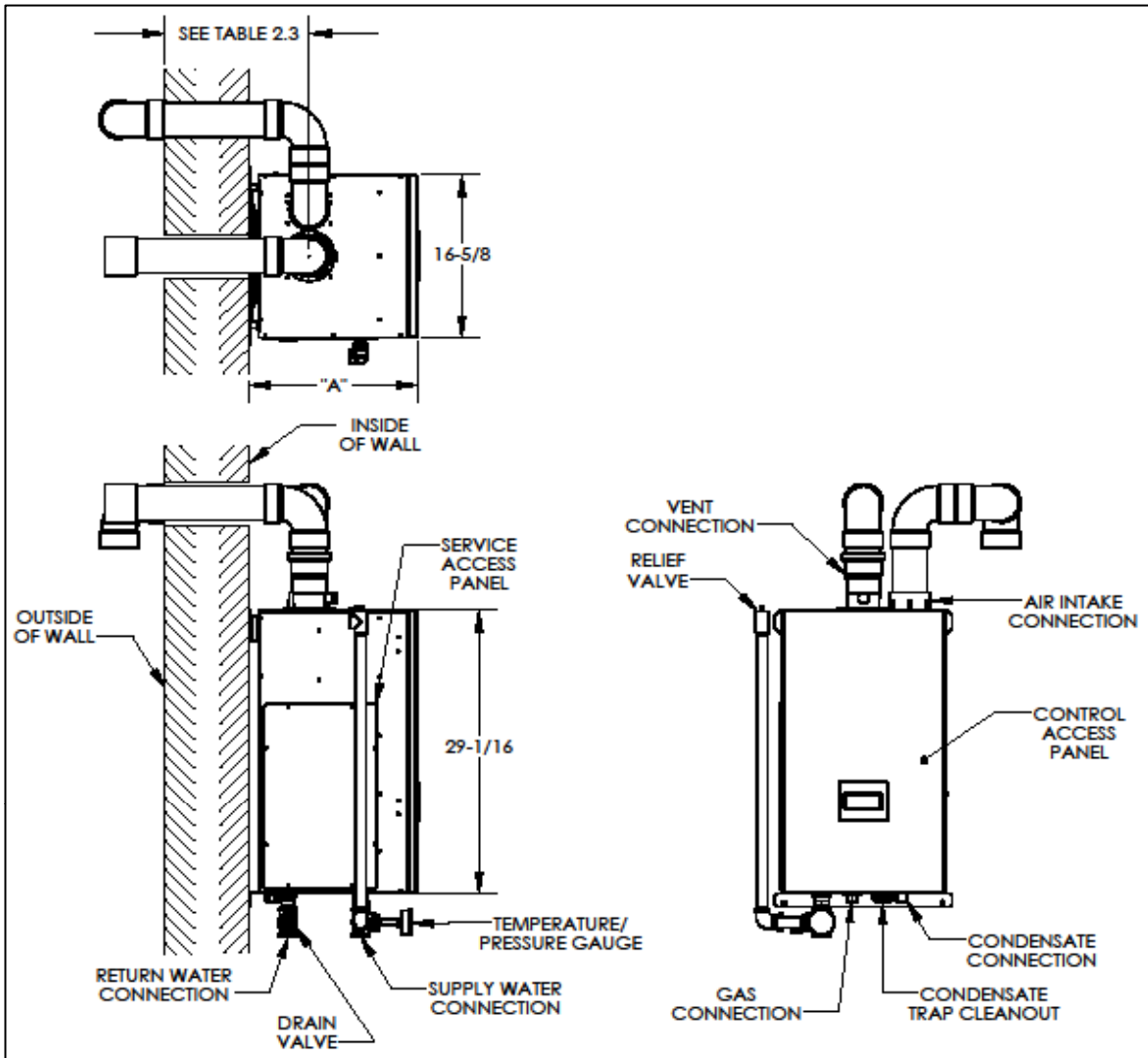
Optional Equipment

- "EZ Loop" Low Loss Header
"EZ" Combi-Kit with Mixing Valve & Plate Heat Exchanger
Floor Mounting Pedestal Kit w/ Adjustable Feet
Manual Reset High Limit
LP conversion Kit
24 Volt LWCO Kit
CPVC/PVC Vent Kit
Service Parts Kit

Special Job Notes:

Blank lines for special job notes

PHNTM080B,100B, 120B, 150B & 180B



PHANTOM Heating Boiler Dimensions & Specifications

| Model Number | Input | | AFUE % | Heating Capacity MBH | AHRI Net Rating | A | Water Volume | Vent Size | Air Inlet | Min. Vent Length | Max. Vent Length | Water Conn | Gas Conn | Approx. Net Weight (lb) |
|--------------|---------|---------|--------|----------------------|-----------------|-----|--------------|-----------|-----------|------------------|------------------|------------|----------|-------------------------|
| | Max MBH | Min MBH | | | | | | | | | | | | |
| PHNTM080 | 80 | 8 | 95.0 | 74 | 64 | 17" | 0.36 | 3" | 3" | 12" | 135ft | 1" | 1/2" | 100 |
| PHNTM100 | 100 | 10 | 95.0 | 94 | 82 | 17" | 0.44 | 3" | 3" | 12" | 135ft | 1" | 1/2" | 102 |
| PHNTM120 | 120 | 12 | 95.0 | 112 | 97 | 17" | 0.53 | 3" | 3" | 12" | 135ft | 1" | 1/2" | 105 |
| PHNTM150 | 150 | 15 | 95.0 | 142 | 123 | 21" | 0.79 | 3" | 3" | 52" | 135ft | 1" | 1/2" | 119 |
| PHNTM180 | 180 | 18 | 95.0 | 179 | 147 | 21" | 0.79 | 3" | 3" | 52" | 135ft | 1" | 1/2" | 119 |

Venting Note: Sizes noted are for CPVC/PVC & certain specified polypropylene vent systems. Concentric venting terminals permitted in most installations. See installation manual for venting option details.

Velocity Boiler Works - 3633 I Street - Philadelphia, PA 19134 - 215-535-8900v - 215-535-9736fx

www.velocityboilerworks.com