

## For hazardous locations

Model EXUB explosion-proof unit heaters are designed for rugged industrial applications, especially in hazardous locations where there is always the possibility of explosion or fire due to the presence of flammable gases, vapors or dusts. A variety of mounting kits are available for field installation.

# EXUB

Explosion Resistant Unit Heater



*mining industry    refinery    petrochemical plant    chemical plant    paint room*

## Features

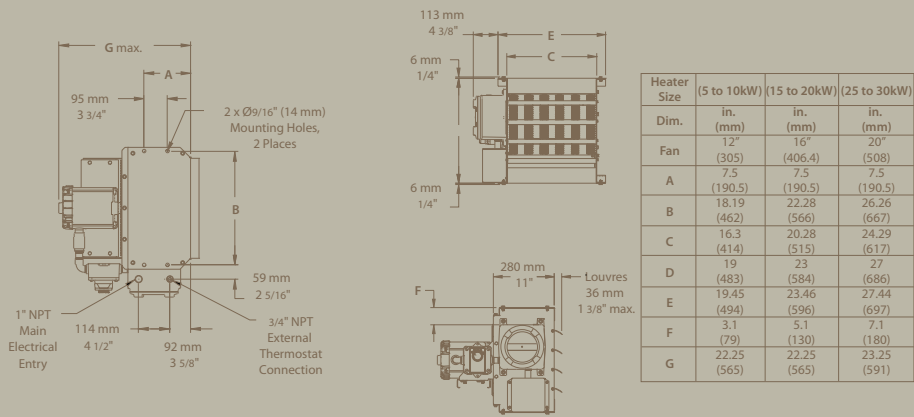
- |                     |   |                         |   |
|---------------------|---|-------------------------|---|
| <b>Color</b>        | - Standard: red.  | <b>Heat exchanger</b>   | - High grade metal-sheathed elements fins with ethylene glycol/water solution.<br>- Long-life, low watt density.<br>- Evacuated and sealed, carbon steel tube core with 10 aluminum fins per inch.<br>- Division System - T3B 165 °C (329 °F).<br>- Zone System - T3 200 °C (392 °F). |
| <b>Finish</b>       | - Epoxy/polyester powder paint.   | <b>Temperature code</b> | - T3B 165 °C (329 °F). Class I and II.  |
| <b>Voltage</b>      | - 208V, 240V, 480V, 600V, 1 or 3-phase.   | <b>Control</b>          | - 120V control (standard).<br>- Optional 24V control.<br>- Optional built-in thermostat.  |
| <b>Construction</b> | - 14-gauge steel cabinet.<br>- Adjustable anodized aluminum louvers.<br>- Cast aluminum control and element enclosure lids NEMA Type 7 and 9 with O-ring. | <b>Installation</b>     | - Accessories available.  |
| <b>Protection</b>   | - High temperature pressure relief valve.<br>- Two high-limit temperature controls: one with automatic reset and one with manual reset.                   | <b>Warranty</b>         | - 3-year warranty against defects.  |
| <b>Fan</b>          | - Explosion-proof, thermally protected, permanently lubricated ball-bearing motor.<br>- 5 to 20 kW: 1/4 HP, 1725 rpm.<br>- 25 to 30 kW: 1/2 HP, 1725 rpm. |                         |   |

## Approved Locations

- Class I, Divisions 1 & 2, Groups C & D.
- Class II, Divisions 1 & 2, Groups F & G.
- Temperature code T3B.
- Class I, Zones 1 & 2, Groups IIA & IIB, T3

## Temperature Limitations

Ambient temperature: -45 °C to 40 °C (-49 °C to 104 °F).  
Maximum altitude ASL: 3048 m (10 000 ft.).



Heater Size	(5 to 10kW)	(15 to 20kW)	(25 to 30kW)
Dim.	in. (mm)	in. (mm)	in. (mm)
Fan	7.5 (190.5)	7.5 (190.5)	7.5 (190.5)
A	18.19 (462)	22.28 (566)	26.26 (667)
B	16.3 (414)	20.28 (515)	24.29 (617)
C	19 (483)	23 (584)	27 (686)
D	19.45 (494)	23.46 (596)	27.44 (697)
E	3.1 (79)	5.1 (130)	7.1 (180)
F	22.25 (565)	22.25 (565)	23.25 (591)
G			

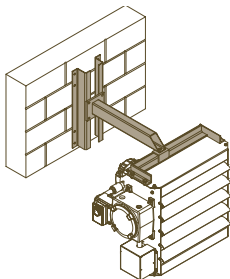
EXUB	Explosion Resistant Unit Heater	Size	5	7	10	15	20	25	30
			kW	5	7.5	10	15	20	25
	cfm		400	600	800	1200	1700	2100	3000
	Fan Motor HP		1/4	1/4	1/4	1/4	1/4	1/2	1/2
	Shipping Weight (lbs)		203	203	207	235	235	286	286

### Factory Installed Options

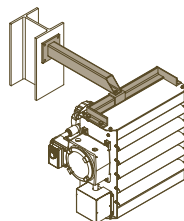
Supply Volt/Phase	208/1	AK2	✓	✓	■	■	■	■	■
	208/3	AK5	✓	✓	✓	✓	■	■	■
	240/1	AK3E	✓	✓	✓	■	■	■	■
	240/3	AK6E	✓	✓	✓	✓	■	■	■
	480/3	AK7E	✓	✓	✓	✓	✓	✓	✓
	600/3	AK8E	✓	✓	✓	✓	✓	✓	✓
Internal Thermostat		IX34	✓	✓	✓	✓	✓	✓	✓
Control Voltage	120V Controls	STD	✓	✓	✓	✓	✓	✓	✓
	24V Controls	BT1	✓	✓	✓	✓	✓	✓	✓
Factory Installed Disconnect Switch		BAX1	✓	✓	✓	✓	✓	✓	✓
Size			5	7	10	15	20	25	30

### Field Installed Options (Shipped Separately)

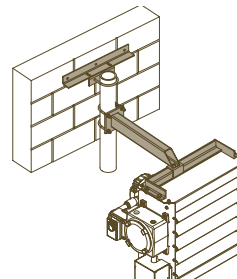
Size			5	7	10	15	20	25	30
Mounting Brackets	Pipe hanger brackets (1/2" pipe not included)	CK25	✓	✓	✓	✓	✓	✓	✓
	Wall mounting arm w/flange (bolt or weld to steel or concrete)	CK26	✓	✓	✓	✓	✓	✓	✓
	Wall mounting arm with Z supports (block wall)	CK27	✓	✓	✓	✓	✓	✓	✓
	Pole mounting arm (requires 3.5" OD pipe not included)	CK20	✓	✓	✓	✓	✓	✓	✓
Shipping Weight (lbs)		CK25	5	5	5	5	5	5	5
		CK26	17	17	17	19	19	20	20
		CK27	24	24	24	26	26	27	27
		CK20	24	24	24	26	26	27	27
Explosion-Proof Wall Thermostat (40-80 °F)		CX1	✓	✓	✓	✓	✓	✓	✓
Explosion-Proof Wall Disconnect Switch		CPX1	✓	✓	✓	✓	✓	✓	✓



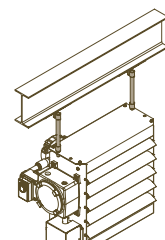
**CK27: Wall Mounting Bracket**  
For use in buildings that have substantial walls. The Z sections provide additional support where necessary.



**CK26: Basic Mounting Bracket**  
For applications where the support arm can be bolted or welded directly to structural steel or concrete.



**CK20: Pole Mounting Bracket**  
For buildings with insufficient strength to use other types of mounting brackets. Requires 3 in. pipe (3.5 in. O.D., min. Sch. 40, not supplied).



**CK25: Hanging Mounting Bracket**  
Ideal and economical if adequate overhead structure exists. Requires 1/2 in. pipe, cut and threaded (min. Sch. 40 not supplied).