

Job Name/Location:

Tag #:

Date:

For: File Resubmit  
Approval Other

PO No.:

Architect: GC:

Engr: Mech:

Rep: (Company) (Project Manager)

# LV480HV1

## Single Zone Vertical Air Handling Unit

Outdoor Unit (ODU) - LUU480HV Indoor Unit (IDU) - LVN480HV



### Performance:

#### Cooling:

|   |                          |
|---|--------------------------|
| Cooling Capacity (Min~Rated~Max, Btu/h) | 18,000 ~ 48,000 ~ 53,000 |
| SEER2 / EER2                            | 16.50/9.70               |

SEER - Seasonal Energy Efficiency Ratio EER - Energy Efficiency Ratio

#### Heating:

|   |                          |
|---|--------------------------|
| Heating Capacity (Min~Rated~Max, Btu/h) | 19,000 ~ 50,000 ~ 60,000 |
| HSPF2                                   | 9.30                     |
| Max heating @ Indoor 70° DB (Btu/h)     |                          |
| Outdoor 17°F WB                         | 40,000                   |
| Outdoor 5°F WB                          | 39,500                   |
| Outdoor -4°F WB                         | 33,020                   |

HSPF - Heating Seasonal Performance Factor  
Cooling Nominal Test Conditions:  
Indoor: 80°F DB / 67°F WB  
Outdoor: 95°F DB / 75°F WB

Heating Nominal Test Conditions:  
Indoor: 70°F DB / 60°F WB  
Outdoor: 47°F DB / 43°F WB

### Electrical:

|   |                    |
|---|--------------------|
| Power Supply <sup>1</sup> (V/Hz/Ø)      | 208-230 / 60 / 1   |
| MOP / MCA (A)                           | 40 / 32            |
| Cooling / Heating Rated Amps (A)        | 24.2 / 24.2        |
| Compressor(A)                           | 22.0               |
| Fan Motor (IDU + ODU) (A)               | 2.2 + (1.6 x 2)    |
| Cooling Power Input (Min~Rated~Max, kW) | 1.40 ~ 4.95 ~ 6.00 |
| Heating Power Input (Min~Rated~Max, kW) | 1.50 ~ 4.19 ~ 6.20 |

MOP - Maximum Overcurrent Protection MCA - Minimum Circuit Ampacity

### Piping:

|                                      |           |
|--------------------------------------|-----------|
| Installed Liquid Pipe (in., O.D.)    | 3/8 Flare |
| Installed Vapor Pipe (in., O.D.)     | 5/8 Flare |
| IDU Liquid Connection (in., O.D.)    | 3/8 Flare |
| IDU Vapor Connection (in., O.D.)     | 5/8 Flare |
| Additional Refrigerant (oz./ft.)     | 0.43      |
| Min/Max. Pipe Length (ft.)           | 6.6 / 246 |
| Piping Length (no add'l refig., ft.) | 24.6      |
| Max. Elevation (ft.)                 | 98.4      |

### Features:

- Hot start
- Inverter (variable speed)
- Auto restart
- Control lock
- Group control
- Timer (on/off)
- Sleep Mode
- Optional Wi-Fi Control
- Built in dry contact
- ESP (External Static Pressure) Control

### Required Accessories (sold separately):

Controller (Any LG wired remote controller)

### Optional Accessories:

- MultiSITE™ CRC2 - PREMTBVC2
- MultiSITE™ CRC2+ - PREMTBVC3
- MultiSITE™ CRC2+Z - PREMTBVC4
- MultiSITE™ Comm. Mgr. - PBACNBTR0A
- AC Smart 5 - PACS5A000
- ACP 5 - PACP5A000
- Simple Controller - PREMTC00U
- Wi-Fi module - PWFMD200
- Remote Temperature Sensor - ZRTBS01
- Aux Heater Relay Kit - PRARH1
- Drain Pan Heater - PQSH1200
- Dry Contact - PDRYCB320
- Low Ambient Wind Baffle (cooling operation to -4°F) - ZLABGP04A<sup>9</sup>
- Electric Heater 3kW - ANEH033B1<sup>11</sup>
- PI-485 Control Board - PMNFP14A1
- Downflow Conversion Kit - PNDFK0

### Operating Range:

#### Outdoor Unit:

|                 |          |
|-----------------|----------|
| Cooling (°F DB) | 5 to 118 |
| Heating (°F WB) | -4 to 64 |

#### Indoor Unit:

|                 |          |
|-----------------|----------|
| Cooling (°F WB) | 57 to 77 |
| Heating (°F DB) | 59 to 81 |

### System Data:

|  |               |
|--|---------------|
| Refrigerant Type/Control                                   | R410A / EEV   |
| Refrigerant Charge (lbs.)                                  | 7.5           |
| ODU Sound Pressure Max (Cool / Heat) ±1 dB(A) <sup>3</sup> | 52 / 54       |
| IDU Sound Pressure (H/M/L) ±1 dB(A) <sup>3</sup>           | 49 / 48 / 44  |
| ODU Net / Shipping Weight (lbs.)                           | 203 / 232     |
| IDU Net / Shipping Weight (lbs.)                           | 158.7 / 176.4 |

### Fan:

|  |   |
|--|---|
| ODU / IDU Fan Type   | Propeller/Sirocco                       |
| Fan Speeds (Fan/Cool/Heat)   | 3/3/3                                   |
| Fan Quantity (ODU + IDU)   | 2 + 1                                   |
| Motor/Drive  | Brushless Digitally Controlled / Direct |
| Maximum ODU Air Volume (CFM)   | 1,942 x 2                               |
| IDU Air Volume (H/M/L) (CFM)   | 1,400 / 1,260 / 1,000                   |
| Dehumidification Rate (pts/hr) <sup>10</sup>   | 5.2                                     |
| IDU External Static Pressure Operating Range (Min~Default~Max) (in-wg) <sup>11</sup> | 0.1~ 0.3 ~ 1.0                          |

### Notes:

1. Acceptable operating voltage: 187V-253V.
2. Piping lengths are equivalent.
3. Sound Pressure levels are tested in an anechoic chamber under ISO Standard 3745.
4. All power/communication cable to be minimum 14 American wire gage (AWG), 4-conductor, stranded, shielded or unshielded wire and must comply with applicable local and national code. If shielded, the wire must be grounded to the chassis at the outdoor unit only.
5. Power wiring cable size must comply with the applicable local and national code.
6. The indoor unit comes with a dry helium charge.
7. This data is rated 0 ft. above sea level, with 25 ft. of refrigerant line and a 0 ft. level difference between outdoor and indoor units.
8. Must follow installation instructions in the applicable LG installation manual.
9. If the optional low ambient wind baffle (ZLABGP04A) is used, one wind baffle is required for each ODU fan.
10. Dehumidification rate is based on high speed airflow.
11. Electric heater accessory available in 3kW, 5kW, 8kW, 10kW, 15kW, and 20kW capacities. Refer to the engineering manual for details.
12. Controller not included.



For a complete list of available accessories, contact your LG representative.

For continual product development, LG reserves the right to change specifications without notice.

© LG Electronics U.S.A., Inc., Englewood Cliffs, NJ. All rights reserved. "LG Life's Good" is a registered trademark of LG Corp. /www.lghvac.com

SB\_SZ\_VAHU\_NK\_LV480HV1\_2023\_05\_17\_112723

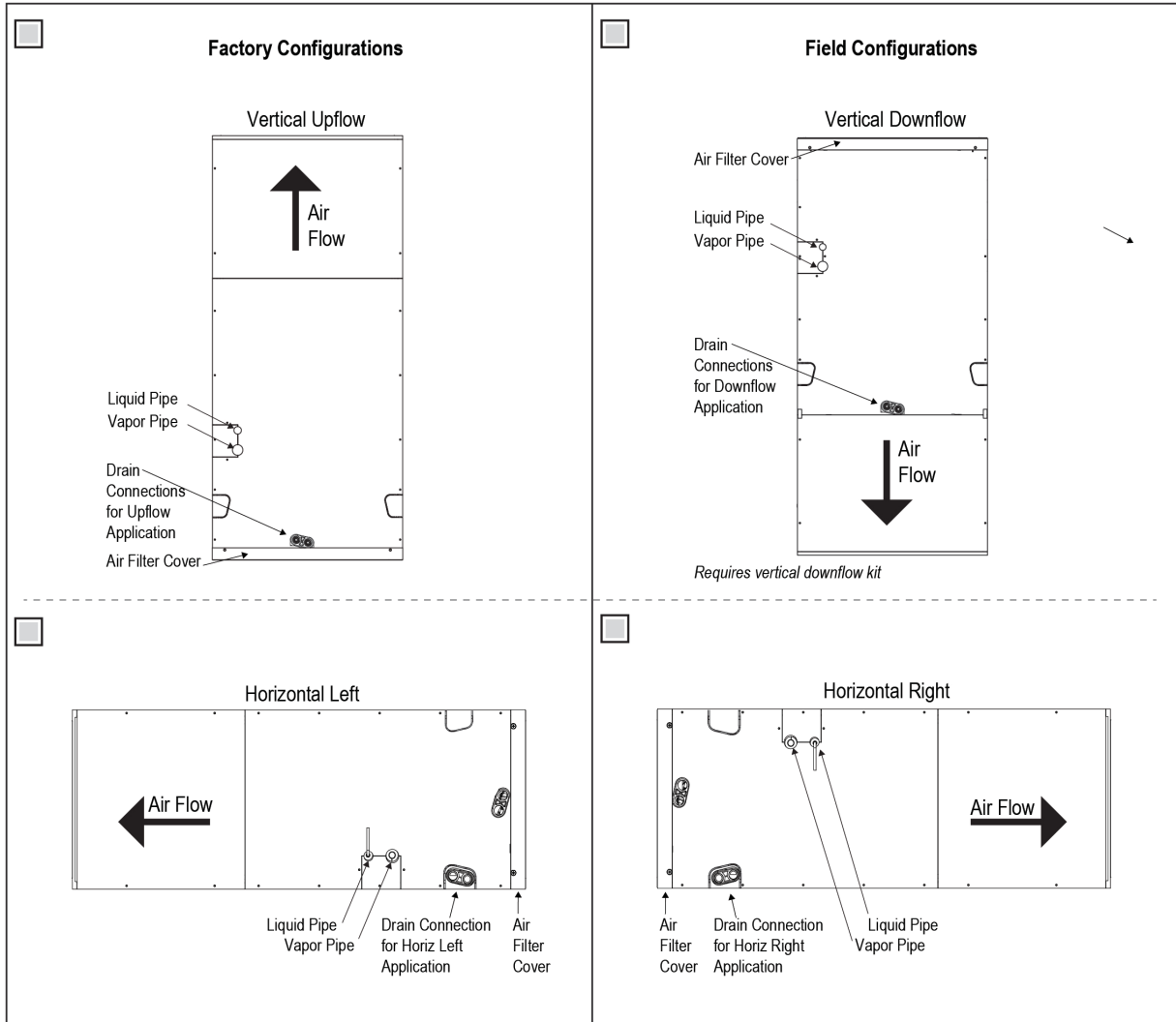
**LVN480HV**  
Single Zone Vertical Air Handling Unit



Tag No.: \_\_\_\_\_

Date: \_\_\_\_\_

PO No.: \_\_\_\_\_



# LUU480HV

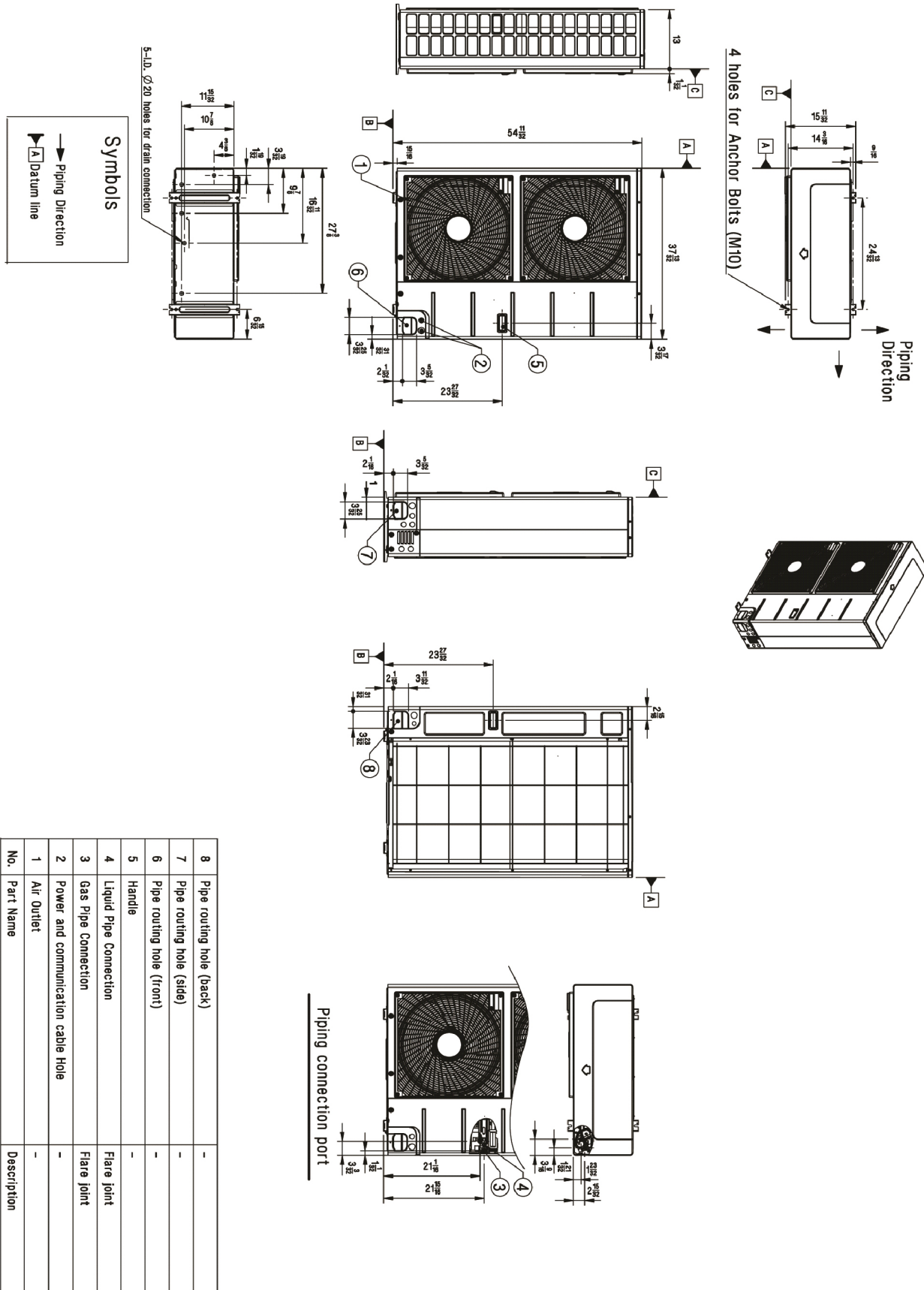
## Single Zone Vertical Air Handling Unit



Tag No.: \_\_\_\_\_

Date: \_\_\_\_\_

PO No.: \_\_\_\_\_



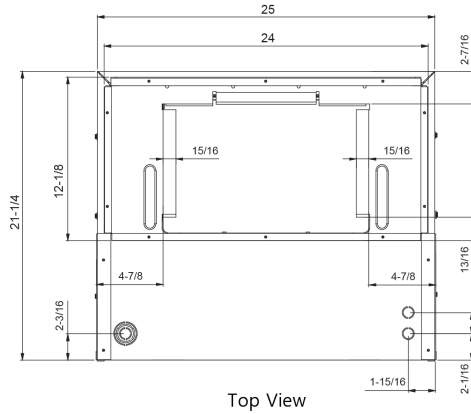
**LVN480HV**  
Single Zone Vertical Air Handling Unit



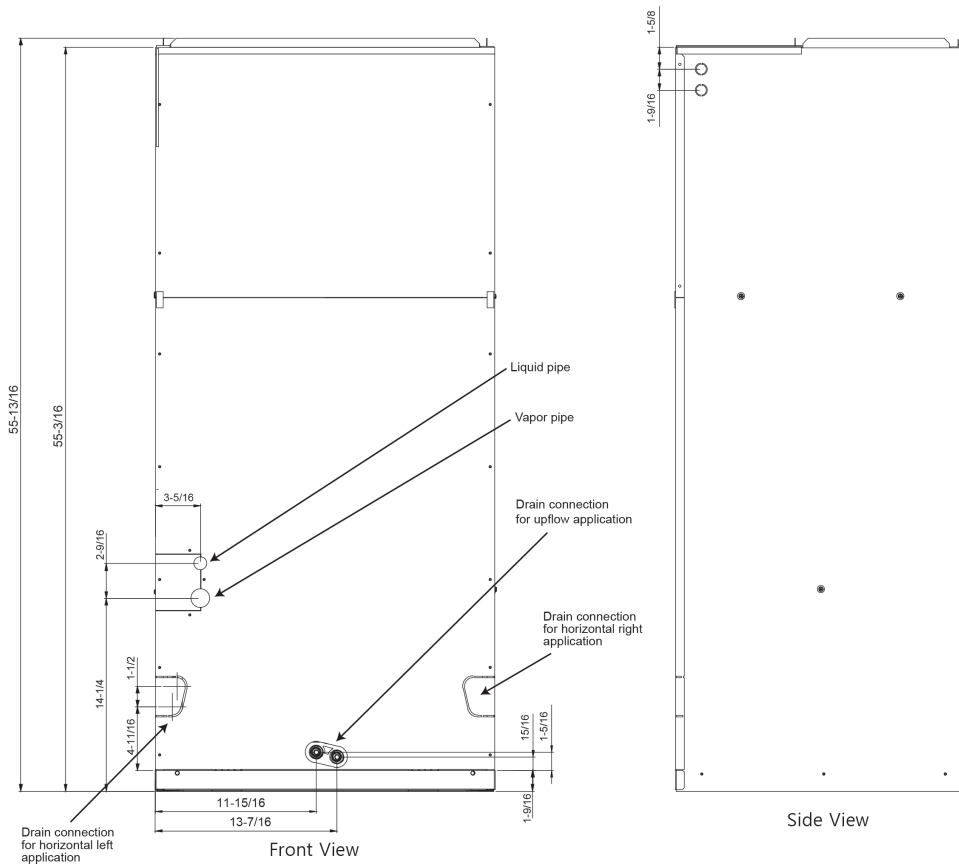
Tag No.: \_\_\_\_\_

Date: \_\_\_\_\_

PO No.: \_\_\_\_\_

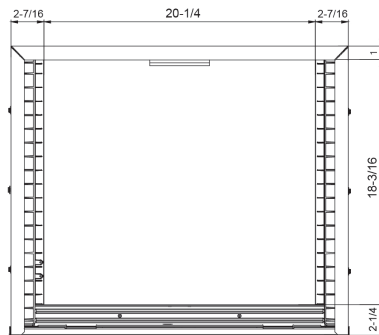


Top View



Front View

Side View



Bottom View

Unit: inch