

CENTRIFUGAL PUMPS

GAS ENGINE FMIG

FPS

FEATURES

- **Volute:** Cast-gray iron rugged construction; self-priming with priming and drain plugs; removable front cover features a built in check valve to facilitate priming
- **Impeller:** Semi open cast iron, non-clogging, designed for water but can also handle small quantities of mud, sand, or silt up to 10% by volume; replaceable steel wear plate for maintaining maximum pump efficiency
- **Mechanical Seal:** Standard carbon/ceramic faces, FKM elastomers, 300-series stainless steel components
- **Engine:** Industry-recognized Honda or Kohler
- **Mounting:** Horizontal position



SPECIFICATIONS

- Capacities to 400 gpm
- Heads to 160 feet
- 120 psi max working pressure
- 212 °F maximum temperature
- Clockwise rotation when viewed from engine side
- NPT pipe connections

APPLICATIONS

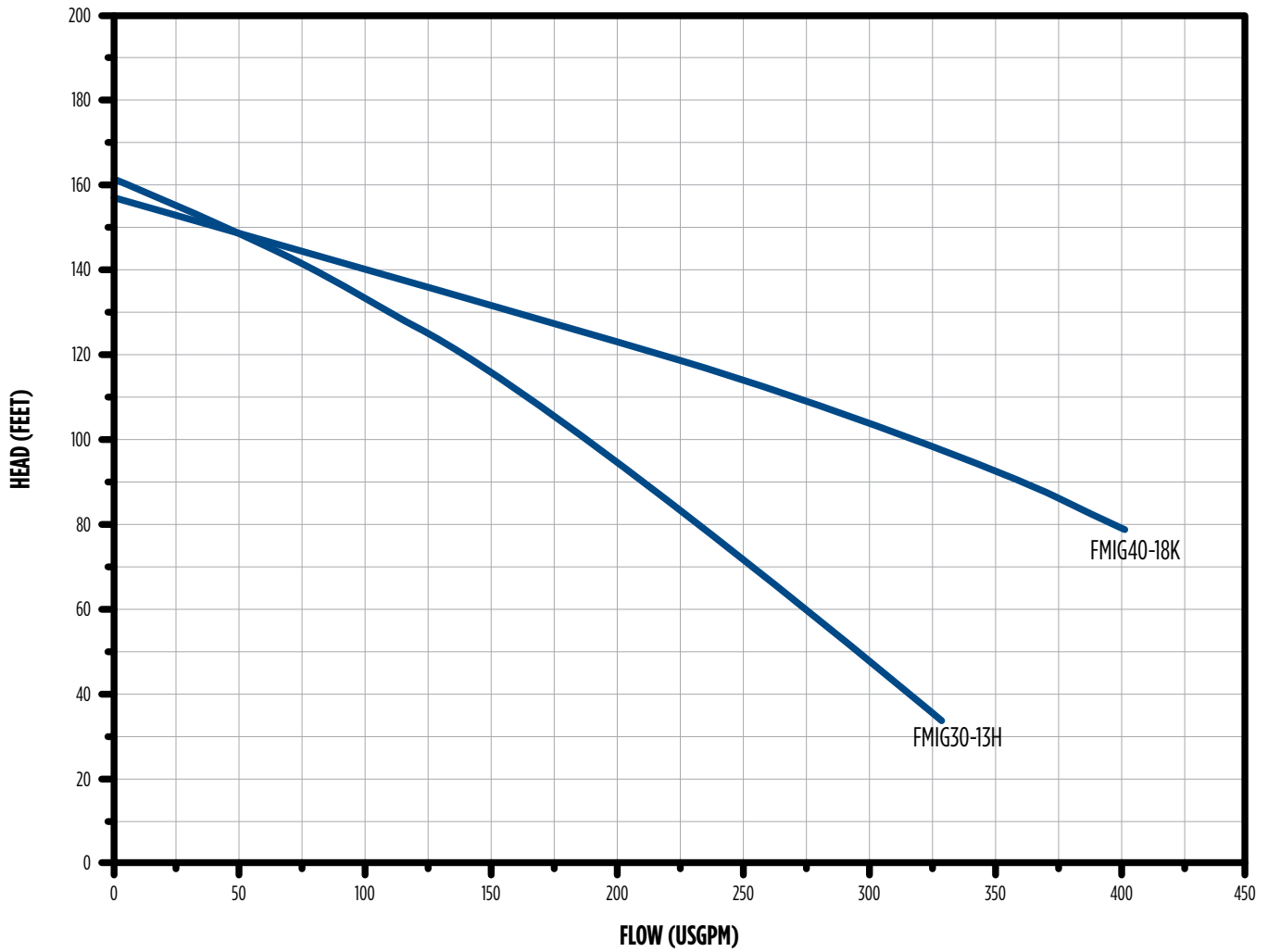
- Irrigation
- Construction
- Mining
- Commercial
- Municipal
- Light Industrial

CENTRIFUGAL PUMPS

GAS ENGINE FMIG



PERFORMANCE



ORDERING INFORMATION

Pump Size (Dis x Suc)	CC	Model	Engine	Order No.	Low-Oil Shut-Off	Wt.
3" x 3"	289	FMIG30-13H	Honda with 6.9 qt. fuel tank	90281113	YES	270
4" x 4"	624	*FMIG40-18K	Kohler	90281218	YES	320

NOTE: All weight in pounds.

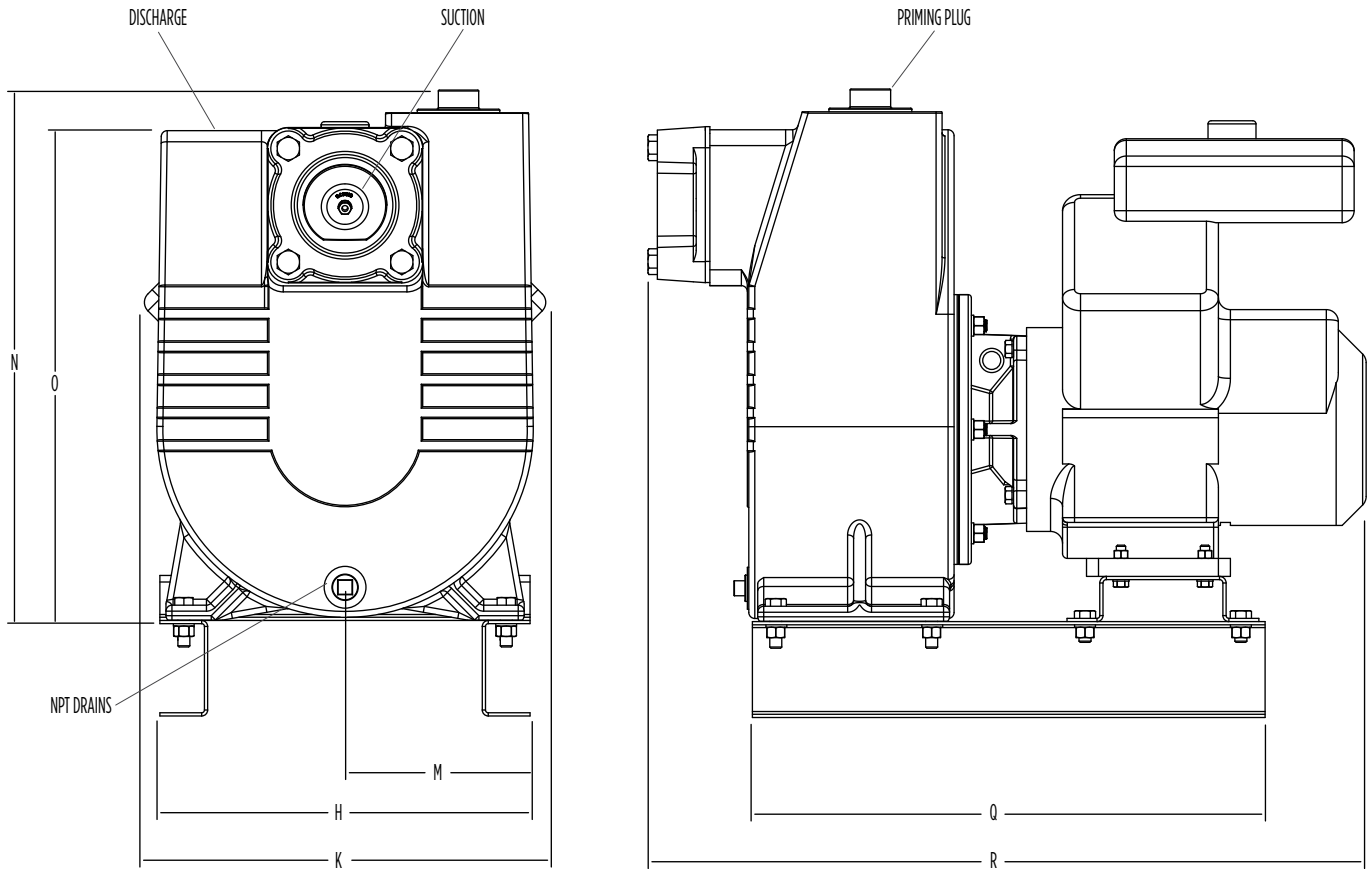
*Equipped with electric start. Battery, fuel tank, and cables not included.

CENTRIFUGAL PUMPS

GAS ENGINE FMIG



DIMENSIONS



Model	H	K	M	N	O	Q	R
FMIG30-13H	12.75	17.25	11.50	17.50	15.85	N/A	24.60
FMIG40-18K	15.50	17.74	8.87	28.25	26.31	21.37	29.95

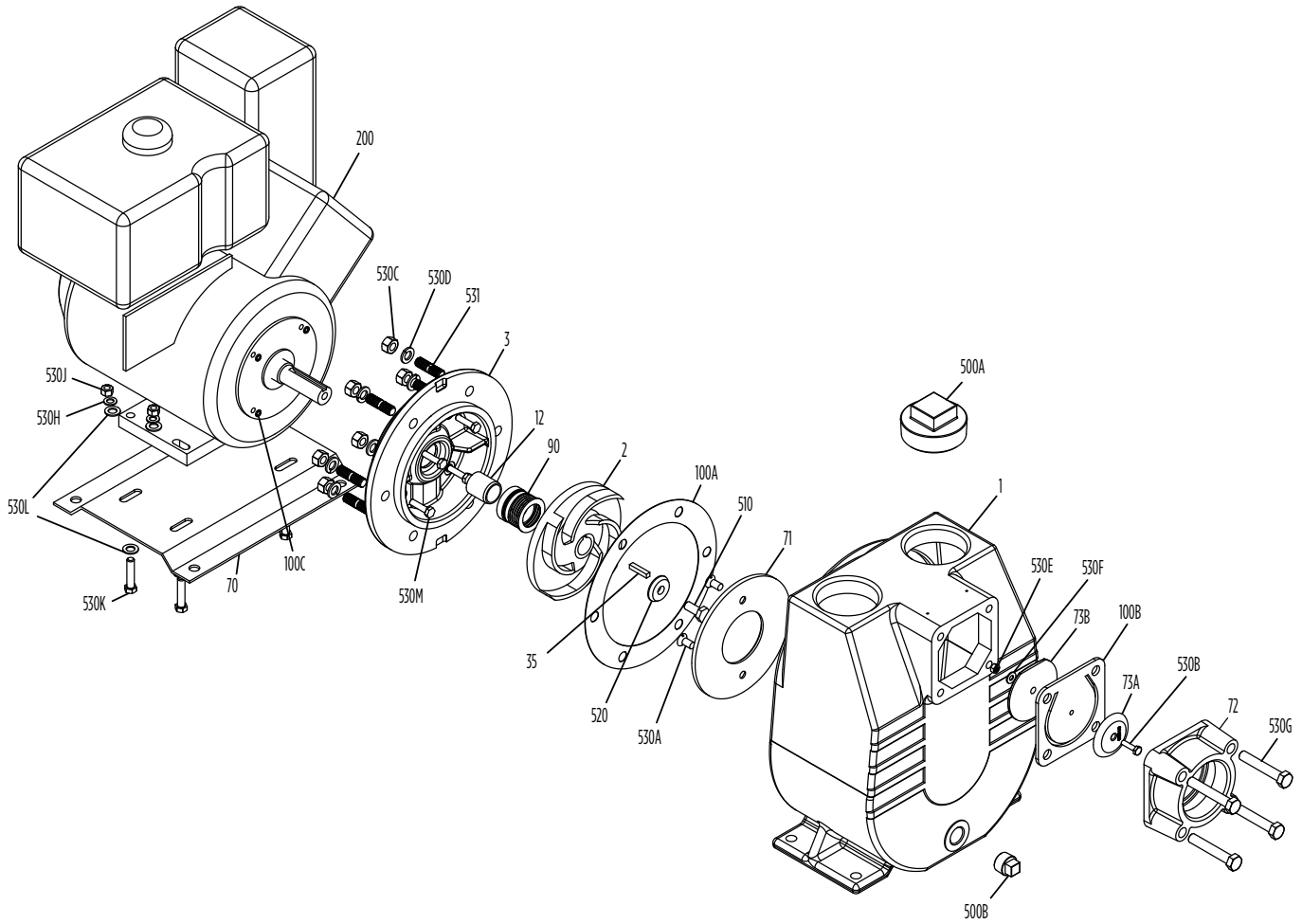
NOTE: Dimensions are for estimating purposes only. All dimensions in inches.

CENTRIFUGAL PUMPS

GAS ENGINE FMIG



MATERIALS AND PARTS



CENTRIFUGAL PUMPS

GAS ENGINE FMIG



MATERIALS AND PARTS

Fig. No.	Part Description	Part No.		Materials of Construction
		FMIG30-13H	FMIG40-18K/ FMIG40-27K/ *FMIG40-27K	
1	Pump Case	305455002	305455003	Cast Iron, ASTM-A48 CL30
2	Impeller	See Table 1		Cast Iron, ASTM-A48 CL30
3	Motor Adapter	305456001	305456002	Cast Iron, ASTM-A48 CL30
12	Mechanical Seal Shaft Sleeve	305456003	305456004	416-Stainless steel
35	Impeller Shaft Key	305456005	305456006	316-Stainless steel
70	Base, Engine Frame	305456007	305455018 *	CRS
71	Wear Plate	305455008	305455009	CRS
72	Suction Flange	305454019	305454020	CRS
73A	Top Weight- Check Valve	305454022	305454023	Cast Iron, ASTM-A48 CL30
73B	Bottom Weight - Check Valve	305454025		Cast Iron, ASTM-A48 CL30
90	Mechanical Shaft Seal	305463043	305463044	Carbon/Ceramic/FKM/316SS
100A	Case Gasket	305454041	305454042	NA60
100B	Flapper Valve	305454044	305454045	Neoprene
100C	O-ring - Motor Bracket (4-Pack)	305463087	N/A	FKM
200	Engine	See Table 1		Misc.
500A	Pipe Plug 3" (3-Pack)	305463076		CAD-plated steel
500B	Pipe Plug 3/4" (3-Pack)	305463050		CAD-plated steel
503	Water Slinger	305456009	305456010	Neoprene
510	Impeller Hex Cap Screw	305463088	305463211	18-8 Stainless steel
520	Impeller Washer	305456011	305456012	300-Series stainless steel
531	Threaded Stud (6-Pack)	305463089		Zinc-plated steel
530A	Screw, Flat Head Slotted (6-Pack)	305463079		Zinc-plated steel
530B	Bolt, Flapper	305463080	305463058	300-Series stainless steel
530C	Hex Nuts - Adapter/Case (6-Pack)	305463059		Zinc-plated steel
530D	Lockwasher - Adapter/Case (6-Pack)	305463060		Zinc-plated steel
530E	Nut, Flapper	305463082	305463062	300-Series stainless steel
530F	Washer, Flapper	305463084	N/A	300-Series stainless steel
530G	Valve Hex Cap Screw (4-Pack)	305463085	305463086	Zinc-plated steel
530H	Lockwasher - Base/Engine (8-Pack)	305463032		Zinc-plated steel
530J	Hex Nut - Base/Engine (8-Pack)	305463033		Zinc-plated steel
530K	Hex Bolt - Base/Engine (4-Pack)	305463090	305463179	Zinc-plated steel
530L	Washer - Base/Engine (4-Pack)	305454046		Zinc-plated steel
530M	Hex Bolt - Motor/Adapter (4-Pack)	305463091	305463162	Zinc-plated steel
Not Shown	Lockwasher - Motor/Adapter	N/A	305463212	Zinc-plated steel
Not Shown	Flapper Valve Assembly Kit	305455021	305455022	Various

* Includes base, channels, and hardware

* Discontinued

CENTRIFUGAL PUMPS

GAS ENGINE FMIG



TABLE 1

Replacement Impeller			
Model	Part Description	Part No.	Materials of Construction
FMIG30-13H	Impeller	305456013	Cast Iron, ASTM-A48 CL30
FMIG40-18K	Impeller	305456014	Cast Iron, ASTM-A48 CL30
FMIG40-27K	Impeller	305456015	Cast Iron, ASTM-A48 CL30

Model	Engine Description	Part No.
FMIG30-13H	Eng Honda GX390UIQAE2 289cc OHV	202258
FMIG40-18K	Eng Kohler CH620-0017 624cc	202253
FMIG40-27K	Eng Kohler CH740-0124 725cc	*202259

Flapper Valve Assembly Kit		
Model	Part No.	Includes
FMIG30-13H	305455021	100B, 73A, 73B, 530B, 530E, 530F
FMIG40-18K, FMIG40-27K	305455022	100B, 73A, 73B, 530B, 530E

*No longer available

NOTES

GAS ENGINE FMIG





Franklin Electric