

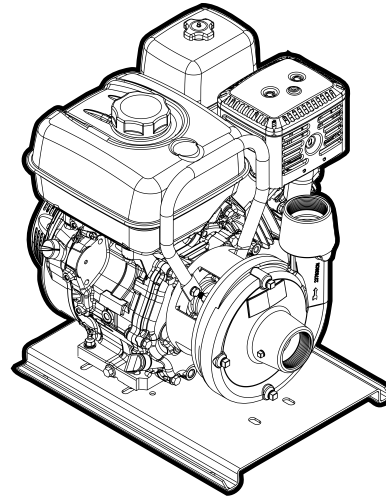
CENTRIFUGAL PUMPS

GAS ENGINE FACGF 160-725 CC

FPS

FEATURES

- Volute: Rugged, cast iron construction with tapped openings for venting and draining
- Impeller: Enclosed cast iron for higher pressure applications
- Mechanical Seal: Standard carbon/ceramic faces, FKM elastomers, 300 series stainless steel components
- Engine: Industry-recognized Briggs & Stratton, Honda, or Kohler, equipped with adjustable throttle controls
- Mounting: Horizontal position



SPECIFICATIONS

- Capacities to 270 gpm
- Heads to 240 feet
- 150 psi maximum working pressure
- 200 °F maximum temperature
- Clockwise rotation when viewed from motor end
- NPT pipe connections

APPLICATIONS

- Irrigation
- Commercial
- Construction
- Municipal
- Light Industrial
- Mining

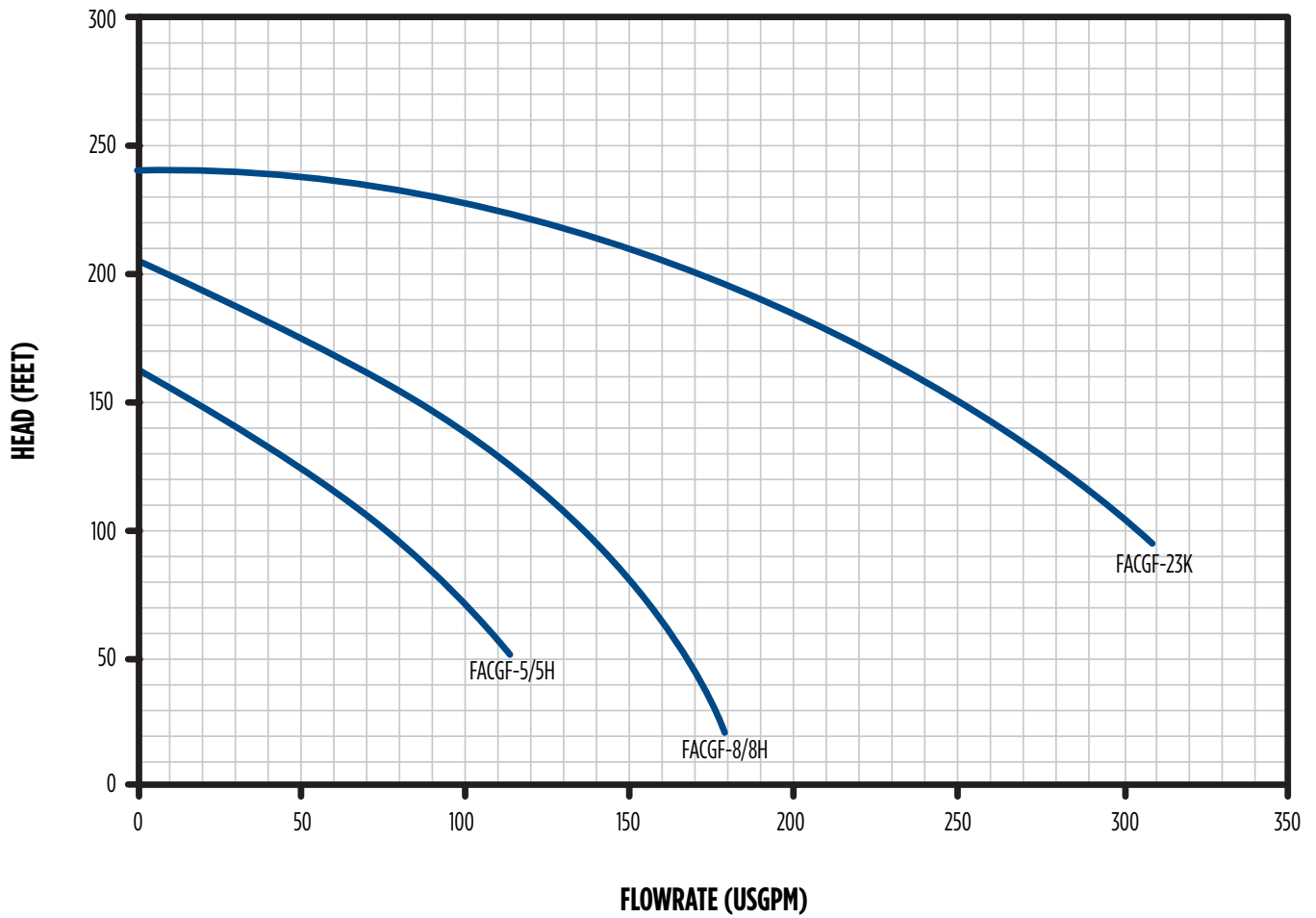
CENTRIFUGAL PUMPS

GAS ENGINE FACGF 160-725 CC



PERFORMANCE

FACGF



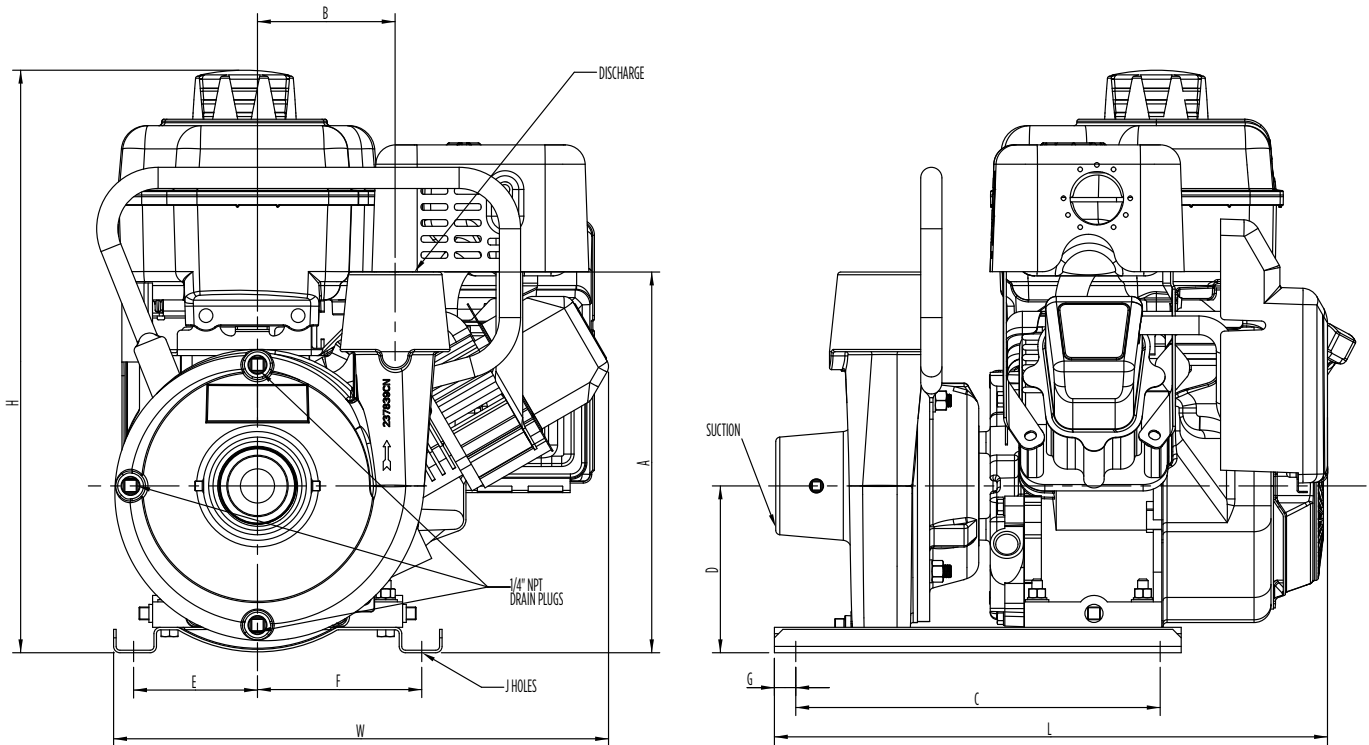
CENTRIFUGAL PUMPS

GAS ENGINE FACGF 160-725 CC



DIMENSIONS

FACGF-5/5H, 8/8H



Model	Suc. / Dis. (NPT)	A	B	C	D	E	F	G	H	J Holes	L	W
FACGF-5	2 x 2	11.23	4.06	10.75	4.93	3.65	4.85	.063	17.18	.041	16.32	14.60
FACGF-5H		11.23	4.06	10.75	4.93	3.65	4.85	.063	13.92	.041	16.35	15.60
FACGF-8		12.64	4.06	13.50	6.33	5.87	6.39	1.75	13.44	.041	23.72	20.26
FACGF-8H		12.68	4.06	13.50	6.37	5.87	6.38	1.75	17.71	.041	19.30	17.43

NOTE: Dimensions are for estimating purposes only.

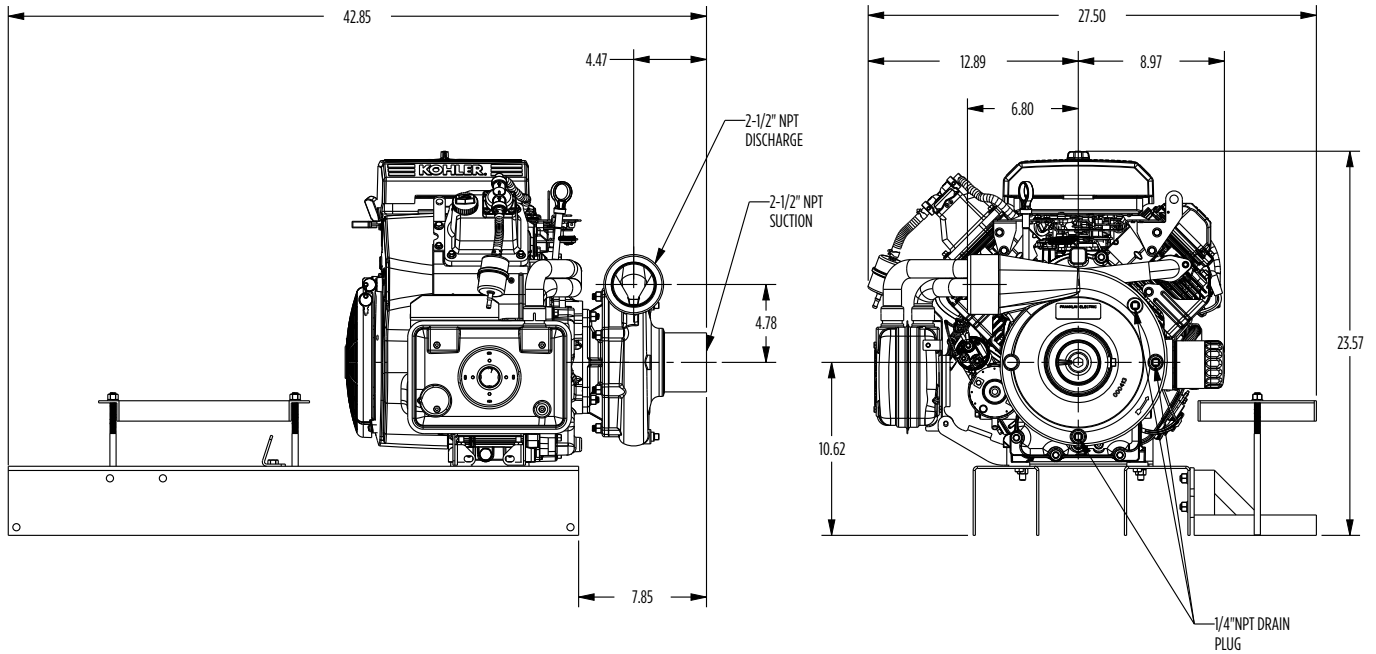
CENTRIFUGAL PUMPS

GAS ENGINE FACGF 160-725 CC



DIMENSIONS

FACGF-23K



ORDERING INFORMATION

Model	Suc. / Dis. (NPT)	CC	Engine Description	Order No.	Low Oil Shut-Off	Wt. (lbs)
FACGF-5	2 x 2	205	Briggs & Stratton INTEK, with 3 qt. fuel tank	90261005	NO	62
FACGF-5H	2 x 2	160	Honda, with 4 qt. fuel tank	90261105	YES	62
FACGF-8H	2 x 2	270	Honda, with 6 qt. fuel tank	90261108	YES	82
FACGF-23K	2-1/2 x 2-1/2*	725	Kohler CH730, electric start	90261323	YES	275

* Battery and fuel tank not included.

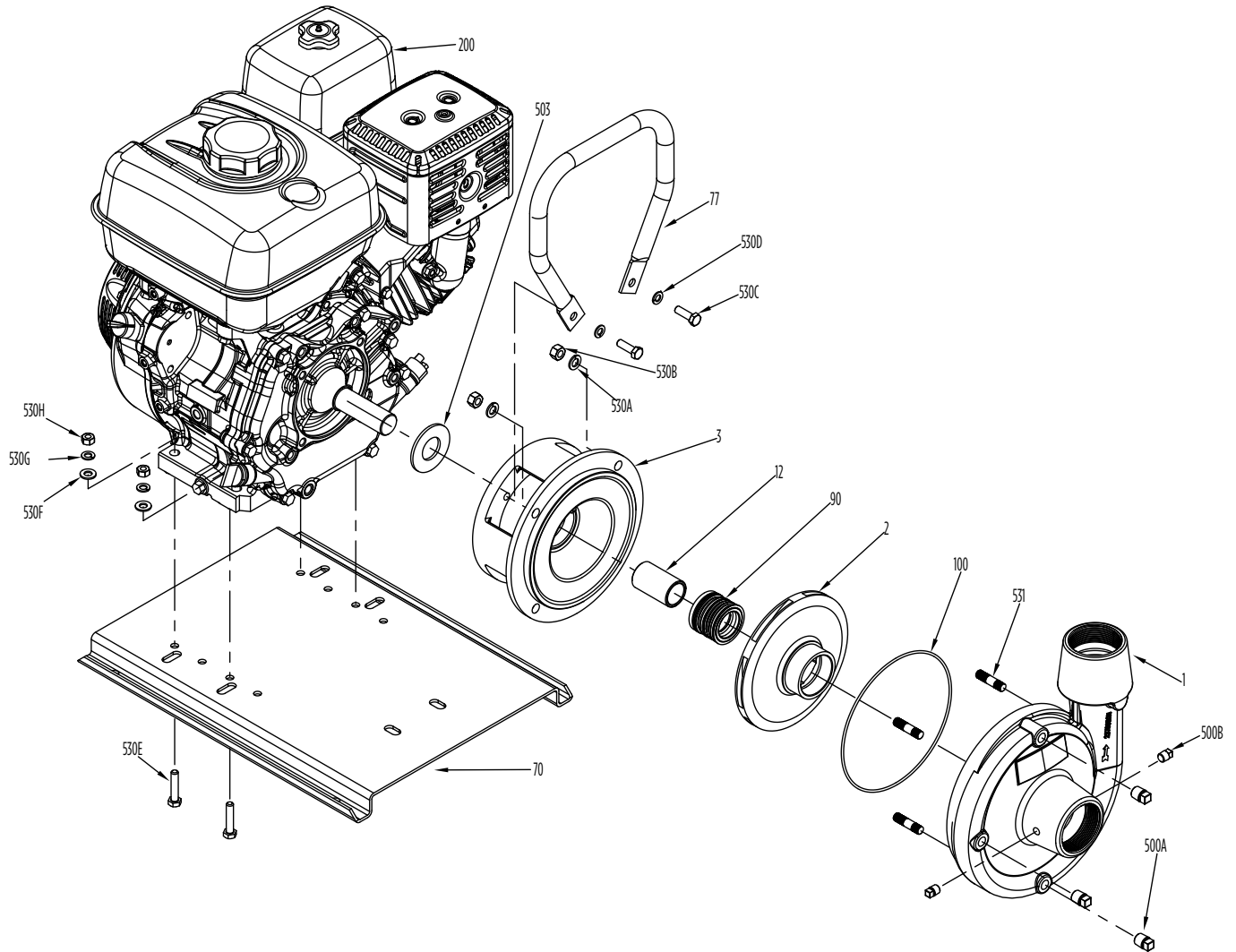
CENTRIFUGAL PUMPS

GAS ENGINE FACGF 160-725 CC



MATERIALS AND PARTS

FACGF-5/5H, 8/8H



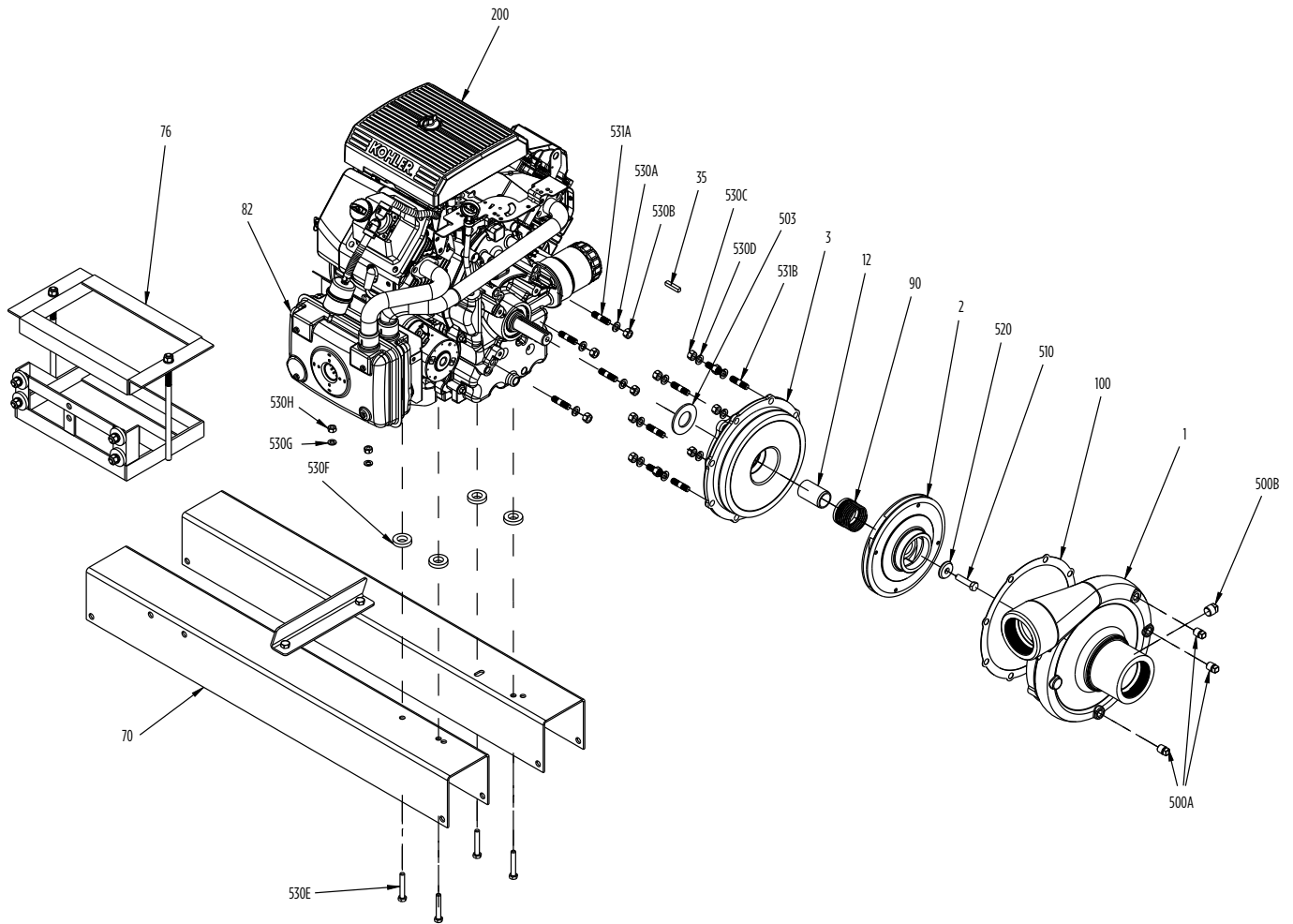
CENTRIFUGAL PUMPS

GAS ENGINE FACGF 160-725 CC



MATERIALS AND PARTS

FACGF-23K



CENTRIFUGAL PUMPS

GAS ENGINE FACGF 160-725 CC



MATERIALS AND PARTS

Fig. No.	Part Description	Part No.					Materials
		FACGF-5	FACGF-5H	FACGF-8	FACGF-8H	FACGF-23K	
1	Pump Case	305459001				305459003	Cast Iron, ASTM-A48 CL30
2	Impeller	305459004		305459005		305459007	Cast Iron, ASTM-A48 CL30
3	Motor Adapter	305459008		305459009		305459010	Cast Iron, ASTM-A48 CL30
12	Mechanical Seal Shaft Sleeve	305458010		305459011		305459013	416 Stainless steel
35	Shaft Key		N/A			305456005	300 Stainless Steel
70	Base, Engine Frame	305459015		305459016		305459024	CRS (Low Carbon)
76	Battery Holder Assembly		N/A			305457008	CRS (Low Carbon)
77	Pump Handle	305459017		305459018	305459019	N/A	CRS (Low Carbon)
90	Mechanical Shaft Seal	305463116			305463043		Carbon/Ceramic Viton/316SS
100	Case O-ring / Gasket		305463117			305463118	EPDM
200	Engine	See Engines Below					Misc.
500A	Pipe Plug 1/4" (4-Pack)	305463020					Cad-Plated Steel
500B	Pipe Plug 1/8" / 3/8" (4-Pack)	305463009				305463175	Cad-Plated Steel
503	Water Slinger	305458022		305456009		305459022	Neoprene
510	Impeller Bolt		N/A			305463119	300 Stainless Steel
520	Impeller Washer		N/A			305455014	300 Stainless Steel
531	Threaded Stud - Volute (8-Pack)		305463114			N/A	18-8 Stainless Steel
530A	Lockwasher - Volute (8-Pack)		305463032			N/A	Zinc Plated Steel
530B	Hex Nut - Volute (8-Pack)		305463033			N/A	Zinc Plated Steel
530C	Hex Bolt - Motor/Adapter (4 Req.)	305463120		305463223		N/A	Zinc Plated Steel
530D	Collar Seal/Washer - Motor/Adapter	305463107		305463092		N/A	Nylon/Zinc Plated Steel
531	Threaded Stud - Motor/Adapter (4-Pack)		N/A			305463093	Zinc Plated Steel
530A	Lockwasher - Motor/Adapter (8-Pack)		N/A			305463032	Zinc Plated Steel
530B	Hex Nut - Motor/Adapter (8-Pack)		N/A			305463033	Zinc Plated Steel
530C	Hex Bolt - Volute (12-Pack)		N/A			305463010	Zinc Plated Steel
530E	Hex Bolt - Base (4-Pack)	305463122		305463123	305463122	305463111	Zinc Plated Steel
530F	Washer Base (4-Pack)			305463109			Zinc Plated Steel
530G	Lockwasher - Base (4-Pack)			305463092			Zinc Plated Steel
530H	Hex Nut - Base (4-Pack)			305463062			Zinc Plated Steel
Not shown	Spacer - Base (4 Pack)		N/A	305463192		N/A	Cast Iron, ASTM-A48 CL30

REPLACEMENT ENGINES

Fig. No.	Pump Model	Engine Description	Part No.
200	FACGF-5	ENG B/S 12T432-2119-F9 205cc	201915
	FACGF-5H	ENG HONDA GX160UTITX2 160cc OHV	202001
	FACGF-8	ENG B/S 20T232-0125-F1 305cc	201918
	FACGF-8H	ENG HONDA GX270UTPA2 270cc OHV	202002
	FACGF-23K	ENG KOHLER CH730-0714-A	106928101

