

Inverter Driven Heat Pump

18,000 BTU Single Zone Compact Cassette

Job Name _____
 Location _____
 Engineer _____
 Submitted To _____
 Submitted By _____
 Reference _____

Date _____
 Approval _____
 Construction _____
 Unit No _____
 Drawing No _____

PRODUCT FEATURES

- 24 hr. Timer/Weekly Timer
- Auto louver: Up/Down
- Auto Mode
- Auto Changeover
- Daisy Chain Compatible
- Built-in Condensate Pump
- Auto Restart
- Economy Mode
- Auto Fan Mode



MODEL NUMBERS

Indoor Unit	AUU18RLF
Outdoor Unit	AOU18RLFCC
System	18RLFCC

EFFICIENCIES

SEER	20.1	
EER	11.2	
HSPF	11.5	
COP	kW/kW	3.95
	Btu/hW	12.30

OUTDOOR TEMPERATURE OPERATION RANGE

Cooling	°F(°C)	14 to 115 (-10 to 46)
Heating		-5 to 75 (-21 to 24)

CAPACITIES

Cooling	Rated	BTU/hW	18,000
	Min.-Max.		3100 - 20100
Heating	Rated		21,600
	Min.-Max.		3100 - 25600

LINESET REQUIREMENTS

Connection Method		Flare
Liquid	in (mm)	Ø1/4 (Ø6.35)
Gas		Ø1/2 (Ø12.70)
Pre-Charge Length	ft (m)	49 (15)
Minimum Length		10 (3)
Maximum Length		66 (20)
Max. Height Diff.		49 (15)

INDOOR DIMENSIONS & WEIGHT

Net (H x W x D)	in	9-21/32 x 22-7/16 x 22-7/16
	mm	(245x570x570)
Gross (H x W x D)	in	10-7/16 x 28-3/4 x 24-19/32
	mm	(265x730x625)
Net Weight	lb (kg)	33 (15)
Gross Weight		40 (18)

OUTDOOR DIMENSIONS & WEIGHT

Net (H x W x D)	in	24-1/2 x 31-3/32 x 11-11/32
	mm	(620 x 790 x 290)
Gross (H x W x D)	in	28-1/16 x 37-7/32 x 15-9/16
	mm	(713 x 945 x 395)
Net Weight	lb (kg)	86 (39)
Gross Weight		95 (43)

Warranty Information



7 Year Compressor, 5 Year Parts out-of-the-box Warranty



10 Year Compressor, 10 Year Parts Warranty when registered within 60 days of installation in a residence



12 Year Compressor, 12 Year Parts Warranty when registered within 60 days of installation in a residence, and installed by a Fujitsu Elite contractor

ACCESSORIES

UTY-TTRX	3rd Party Thermostat Converter
UTY-RNNUM	Wired Remote
UTY-RVNUM	Wired Remote w/backlight
UTY-RSNUM	Simple Remote
UTY-XWZX	Dry Contact Wire Kit
FJ-IR-WIFI-1NA	Intesis IR WiFi module
FJ-RC-WIFI-1NA	Intesis Wired WiFi module
UTY-TFNXZ2	WiFi interface Module



This system combination is Energy Star qualified



Indoor Unit ETL#: 3170288
 Outdoor Unit ETL#: 91987



SUBMITTAL 18RLFCC



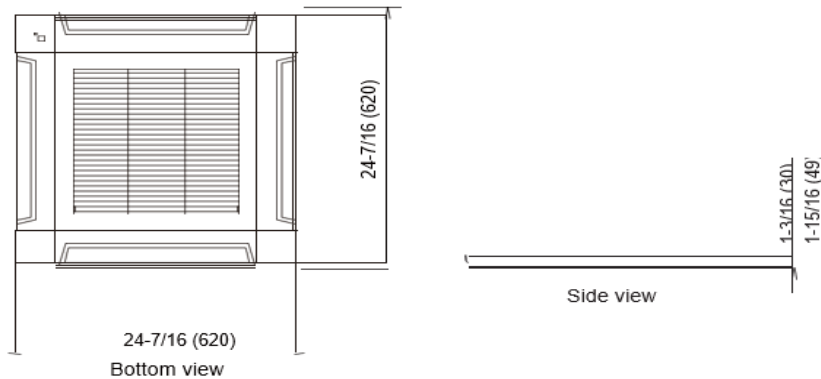
Inverter Driven Heat Pump

18,000 BTU Single Zone Compact Cassette

FAN DATA				ELECTRICAL SPECIFICATIONS					
Indoor Unit Airflow Rate	Cooling	High	400 (680)	Voltage/Frequency/Phase			208 / 230V ~ 60Hz		
		Medium	341 (580)	Voltage Range			187 ~ 253V		
		Low	288 (490)	Current	Cooling	Rated	A	7.1	
		Quiet	241 (410)		Heating	Rated		7.7	
	Heating	High	471 (800)	Maximum Operating Current		Cooling		10	
		Medium	400 (680)			Heating		14	
		Low	341 (580)	Starting Current			7.7		
		Quiet	265 (450)	MCA			17.4		
Outdoor Unit Airflow Rate		Cooling	1,457 (2,475)	Maximum Circuit Breaker			20		
		Heating	1,386 (2,355)	Input Power	Cooling	Rated	1.61		
Indoor Unit	Cooling	High	40		Heating	Min.-Max.	kW	2.15	
		Medium	36	Rated		1.76			
		Low	32	Power Factor			Cooling	%	98
		Quiet	28				Heating	%	99
	Heating	High	44	OTHER					
		Medium	40	Moisture Removal		pints/h (L/h)	4.6 (2.2)		
		Low	36	Energy Star			No		
		Quiet	30	Drain hose		Material	Hard PVC		
Outdoor Unit		Cooling	54	Size	in (mm)	Ø1/2 (Ø13.0) [I.D.], Ø5/8 to Ø11/16 (Ø16.0 to Ø16.7) [O.D.]			
		Heating	55						
REFRIGERANT				Operation Range	Cooling	°F (°C)	64 to 90 (18 to 32)		
Type	R410A					%RH	80 or less		
Charge	lb oz	2 lb 14 oz		Heating	°F (°C)	60 to 88 (16 to 30)			
	kg	1,300							
Oil Type	FREOL								

GRILL DATA

- Grid type grille (UTG-CCGFG)



The Fujitsu logo is a worldwide trademark of Fujitsu General Limited. The Halcyon logo and name is a worldwide trademark of Fujitsu General Limited and is a registered trademark in Japan, the USA and other countries or areas. Copyright 2018 Fujitsu General America, Inc. Fujitsu's products are subject to continuous improvements. Fujitsu reserves the right to modify product design, specifications and information in this brochure without notice and without incurring any obligations.

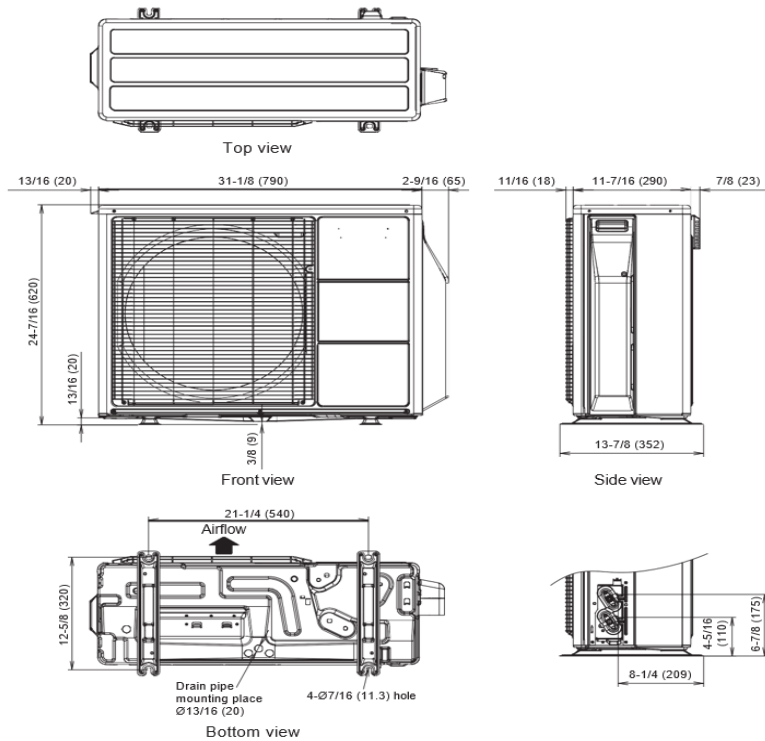
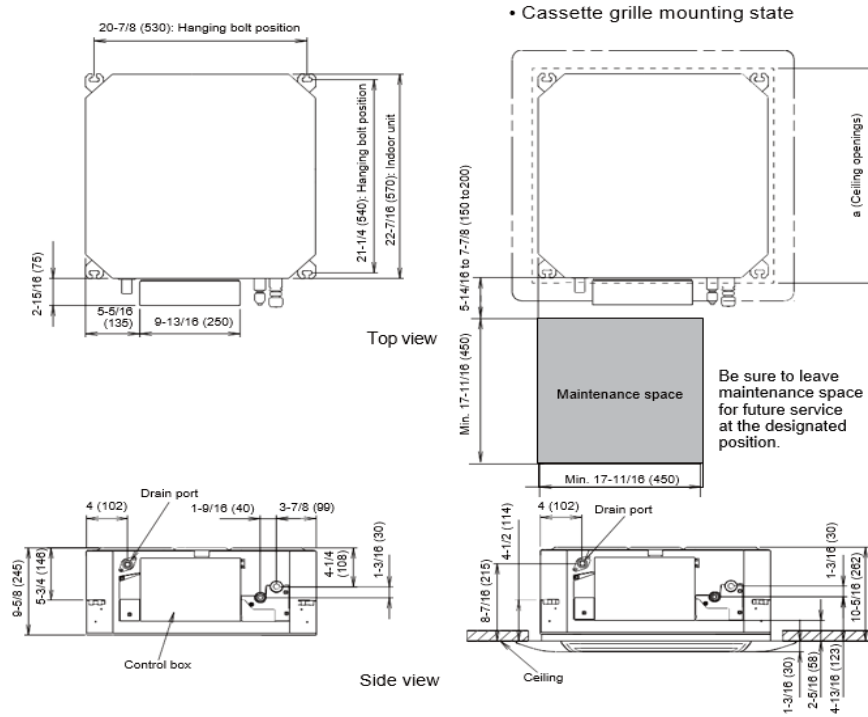
Note: Specifications are based on the following conditions:
 Cooling: Indoor temperature of 80°F (26.7°C) DB/67°F (19.4°C) WB, and outdoor temperature of 95°F (35°C) DB/75°F (23.9°C) WB. Heating: Indoor temperature of 70°F (21.1°C) DB/60°F (15.6°C) WB, and outdoor temperature of 47°F (8.3°C) DB/43°F (6.1°C) WB. Pipe length: 25ft. (7.5m), Height difference: 0ft. (0m) (Outdoor unit - indoor unit).

Inverter Driven Heat Pump

18,000 BTU Single Zone Compact Cassette

DIMENSIONS

Units: In. (mm)



The Fujitsu logo is a worldwide trademark of Fujitsu General Limited. The Halcyon logo and name is a worldwide trademark of Fujitsu General Limited and is a registered trademark in Japan, the USA and other countries or areas. Copyright 2018 Fujitsu General America, Inc. Fujitsu's products are subject to continuous improvements. Fujitsu reserves the right to modify product design, specifications and information in this brochure without notice and without incurring any obligations.

Note: Specifications are based on the following conditions:
 Cooling: Indoor temperature of 80°F (26.7°C) DB/67°F (19.4°C) WB, and outdoor temperature of 95°F (35°C) DB/75°F (23.9°C) WB. Heating: Indoor temperature of 70°F (21.1°C) DB/60°F (15.6°C) WB, and outdoor temperature of 47°F (8.3°C) DB/43°F (6.1°C) WB. Pipe length: 25ft. (7.5m), Height difference: 0ft. (0m) (Outdoor unit – indoor unit).