

Inverter Driven Heat Pump

9,000 BTU Slim Duct Type

Job Name _____
 Location _____
 Engineer _____
 Submitted To _____
 Submitted By _____
 Reference _____

Date _____
 Approval _____
 Construction _____
 Unit No _____
 Drawing No _____

PRODUCT FEATURES

- Automatic Changeover
- Auto/Cool/Dry/Fan/Heat Modes
- 24 Hr./Weekly timer
- Built in Condensate Pump
- Auxiliary Heat Control Logic
- Auto Restart
- Economy Mode



MODEL NUMBERS				
Indoor Unit	ADUH09LUAS1			
Nominal Capacity	9,000			
LINESET REQUIREMENTS				
Connection Method		Flare		
Liquid	in (mm)	Ø 1/4 (Ø 6.35)		
Gas	in (mm)	Ø 3/8 (Ø 9.52)		
Drain hose	Material	HARD PVC		
	in (mm)	Ø1 (Ø25) (I.D.), Ø1-1/4 (Ø32) (O.D.)		
INDOOR DIMENSIONS & WEIGHT				
Net (H x W x D)	in (mm)	7-13/16 x 27-9/16 x 24-7/16 (192 x 700 x 620)		
Gross (H x W x D)	in (mm)	10-13/16 x 37-3/16 x 30-3/8 (274 x 945 x 772)		
Net Weight	lb (kg)	37 (17)		
Gross Weight	lb (kg)	49 (22)		
ELECTRICAL SPECIFICATIONS				
Voltage/Frequency/Phase		208/230 V ~ 60 Hz		
Available Voltage Range		187–253 V		
Running Current	A	0.3		
Input Power	W	49		
SOUND PRESSURE				
Indoor Unit	Cooling	HIGH	dB (A)	28
		MED		27
		LOW		26
		QUIET		25
	Heating	HIGH		28
		MED		26
		LOW		25
		QUIET		24
FAN DATA				
Indoor Unit Airflow rate	Cooling	HIGH	CFM (m3/h)	353 (600)
		MED		324 (550)
		LOW		294 (500)
		QUIET		265 (450)
	Heating	HIGH		353 (600)
		MED		324 (550)
		LOW		294 (500)
		QUIET		265 (450)

Warranty Information



7 Year Compressor, 5 Year Parts out-of-the-box Warranty



10 Year Compressor, 10 Year Parts Warranty when registered within 60 days of installation in a residence



12 Year Compressor, 12 Year Parts Warranty when registered within 60 days of installation in a residence, and installed by a Fujitsu Elite contractor

ACCESSORIES

UTY-RNRUZ*	Wired Remote Controller
UTY-RSRY	Simple Remote Controller
UTY-RHRY	Simple Remote Controller
UTY-LBTUM	IR Kit (Remote & IR Receiver Unit)
UTY-TFSXZ2	WLAN Adapter
UTY-VMSX	Modbus Converter
UTD-GXTB-W	Cassette Grille
UTY-TTRXZ1	Thermostat Converter
UTY-XWZXZG	External Connect Kit

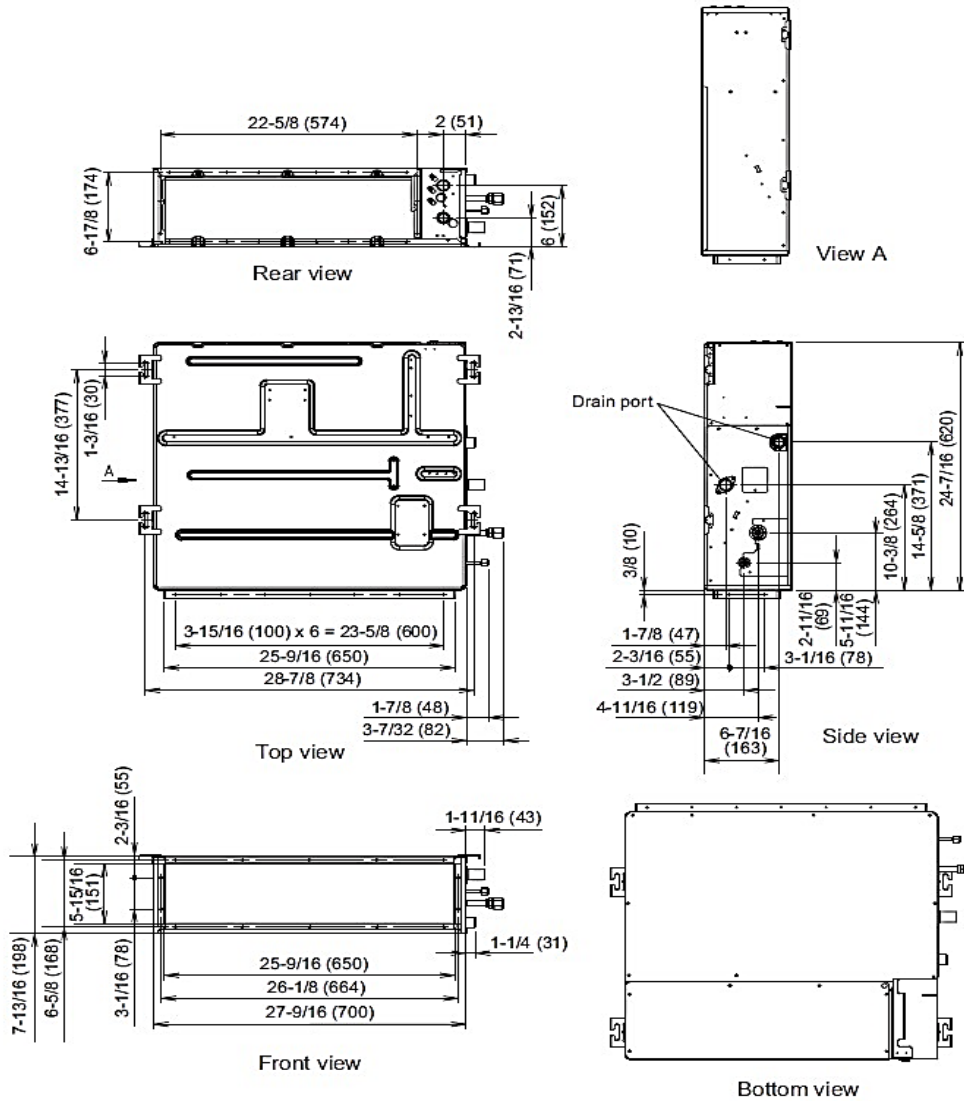
Effective Date: 1/12/2023

Due to continuous product improvements, specifications are subject to change without notice. Please log in to the Fujitsu Portal for the most up-to-date documentation <https://connect.fujitsugeneral.com>

DIMENSIONS:

Indoor Unit:

Units: In. (mm)



The Fujitsu logo is a worldwide trademark of Fujitsu General Limited. The Airstage logo and name is a worldwide trademark of Fujitsu General Limited and is a registered trademark in Japan, the USA and other countries or areas. Copyright 2022 Fujitsu General America, Inc. Fujitsu's products are subject to continuous improvements. Fujitsu reserves the right to modify product design, specifications and information in this brochure without notice and without incurring any obligations.

Note: Specifications are based on the following conditions:
 Cooling: Indoor temperature of 80°F (26.7°C) DB/67°F (19.4°C) WB, and outdoor temperature of 95°F (35°C) DB/75°F (23.9°C) WB. Heating: Indoor temperature of 70°F (21.1°C) DB/60°F (15.6°C) WB, and outdoor temperature of 47°F (8.3°C) DB/43°F (6.1°C) WB. Pipe length: 25ft. (7.5m), Height difference: 0ft. (0m) (Outdoor unit - indoor unit).