

## Industrial Hose Reels

### 2100357 Hand Carry Hose Reel

#### Features and Specifications

- Industrial grade reel holds up to 100' of 3/8" hose, hose not included
- Holds up to 125' of 1/4", hose not included
- 5000 PSI rated swivel with nickle plated hose mounting arm
- Water inlet 3/8" NPT-Male, Outlet 3/8" NPT-Female steel fitting
- Durable black powder coated finish and galvanized welded drum
- One-piece welded drum
- Carton size: 17.7"x15.6"x22.6"
- Gross weight: 25.35 lbs (11.5 kg)
- Carton box Qtys / pallet: 20



### DHRP50150 Pedestal Mount Hose Reel

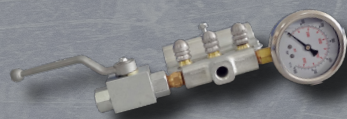
#### Features and Specifications

- Industrial grade reel holds up to 150' of 3/8" hose, not included
- 5000 PSI rated swivel with nickle plated hose mounting arm
- Water inlet 3/8" NPT-Male, outlet 3/8" NPT-Female steel fitting
- Durable gray high-gloss powder coated finish
- HD pedestal stand - mount on wall, workbench or pressure washer
- One-piece welded drum
- Carton size: 18.1"x14.60"x19.9"
- Gross weight: 30.86 lbs (14 kg)
- Carton box Qtys / pallet: 24



### 2100358 Sewer Jetting Kit

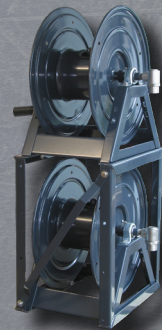
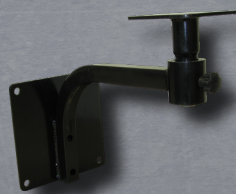
Mounts to 2100357 hose reel, Includes full flow ball valve, 1/4" NPT-F inlet and 1/4" NPT-Foulet, Glycerin filled gauge, 3 Sewer jetting nozzles



## Hose Reel Accessories

### 2100379

Easily and safely mount D3000 and DHR series hose reel to the wall with locking swivel plate



### 2100437

A-frame hose reel stacking kit, stack up to 4 high, Stainless Steel hardware, fits all A-frame hose reels



GP Companies, Inc  
1174 Northland Drive, Mendota Heights, MN 55120  
Phone: 651.686.2199 Fax: 800.535.1745  
www.generalpump.com email: sales@gpcompanies.com  
www.facebook.com/gpcompanies  
www.youtube.com/user/generalpump



General Pump is part of the Interpump Group, the world leader in plunger pumps.



COBRA SERIES HOSE REELS AND ACCESSORIES



## Semi-Professional Hose Reels

### D30001, D30002, D30004, and D30006

#### Features and Specifications

- Direct hand-crank rewind with pin lock
- Solid steel construction
- Durable black powder coated finish
- Brass swivel with Stainless Steel internal stem
- Hardware provided for mounting to cart handle or bumper



MODEL	D30001	D30002	D30004	D30006
<b>3/8" Capacity</b>	50'	100'	150'	200'
Pressure	4000 PSI			
Inlet	3/8" NPT-Female		3/8" NPT-Male	
Outlet	3/8" NPT-Female			
Inlet Pigtail Hose	None		Included	
Carton Size	11.8"x11"x13.2"	15.7"x11.2"x13.4"	16.1"x13.4"x16.7"	19.7"x13.8"x17.1"
Gross Weight	8.8 lbs	11lbs	17.6 lbs	15.9 lbs
Box Qtys / Pallet	72	54	42	28

## Professional Hose Reels

### DHR50100D, DHR50150D, and DHR50200D

#### Features and Specifications

- Direct hand-crank rewind with pin lock
- Solid steel construction with one-piece welded drum
- Durable black powder coated finish
- 5000 PSI rated swivel with nickel plated hose mounting arm



MODEL	DHR50100D	DHR50150D	DHR50200D
<b>3/8" Capacity</b>	100'	150'	200'
Pressure	5000 PSI		
Inlet	3/8" NPT-Male		
Outlet	3/8" NPT-Female		
Inlet Pigtail Hose	Included		
Carton Size	15.4"x13"x16.1"	16.5"x15.4"x16.1"	20.3"x15.4"x16.1"
Gross Weight	17.6 lbs	18.7 lbs	22.5 lbs
Box Qtys / Pallet	45	30	30

### 2100375 Hose Reel Cart

Fits D3000 and DHR series hose reel cart with pre-drilled mounting base platform.

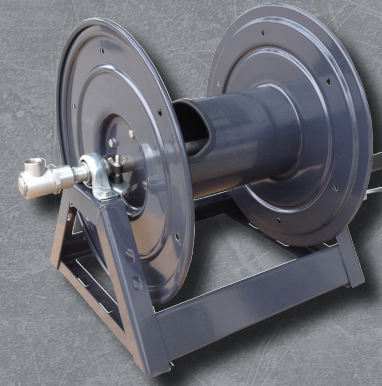


## Industrial Hose Reels

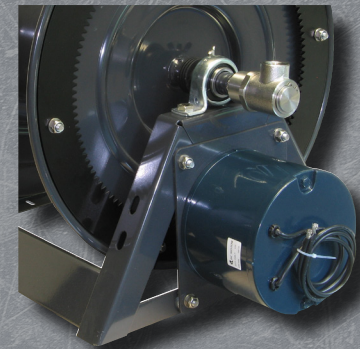
### DHRA50150, DHRA50300, and DHRA50450

#### Features and Specifications

- All Stainless Steel swivel with Parker Viton O-rings
- Includes drum pin-lock and friction brake
- Stainless Steel 5,000 PSI swivel
- Durable gray high-gloss powder coated finish
- One-piece welded drum
- Switchable swivel/handle
- HD steel welded frame
- HD sealed axle bearings
- Stainless Steel assembly hardware



MODEL	DHRA20150	DHRA50300	DHRA50450
<b>3/8" Capacity</b>	150'	300'	450'
Pressure	5000 PSI		
Inlet	3/8" NPT-Female and 1/2" NPT-Female		
Outlet	3/8" NPT-Female and 1/2" NPT-Female		
Carton Size	18.1"x16.1"x19.9"	20.9"x18.1"x16.1"	26"x18.1"x16.1"
Gross Weight	36.4 lbs	41.9 lbs	47.6 lbs
Box Qtys / Pallet	24	16	18



### 103166 Power Rewind Kit

Can be assembled with all 3 A-frame models, DC12 volt electric motor. Includes mounting bracket, ring gear and SS hardware

**A5015012** - DHRA50150 fully assembled with 103166

**A5030012** - DHRA50300 fully assembled with 103166

**A5045012** - DHRA50450 fully assembled with 103166

## Industrial Hose Reel Accessories

### Hose Reel Guide Accessory

2100462 - 150' Hose guide

2100463 - 300' Shown in picture

2100503 - 450' Hose guide

Protect hose when being pulled out or at an angle

4-way enclosed pinch-proof

Stainless Steel guides

Corrosion resistant Stainless Steel hardware

### 2100465 Industrial Hose Reel Cart

(shown assembled in picture)

Shown assembled with 300' A-frame

Fits all 3 above A-frame models

Complete with flat free wheels

