

Job Name: _____

System Reference: _____ Date: _____



Indoor Unit: PLA-A42BA6



Outdoor Unit: PUZ-HA42NKA

ACCESSORIES:

Indoor Unit

- Condensate Pump (BlueDiamond X87-711/721; 115/230V)
- Condensate Pump (Sauermann SI30-115/230; 115/230V)
- iSee Corner Panel (PAC-SA1ME-E)
- Multifunction Casement / MERV 10 Filter (PAC-SH53TM-E / PAC-SH59KF)
- Air Outlet Plates (PAC-SH51SP-E)

Outdoor Unit

- Air Outlet Guide (PAC-SG59SG-E [x2])
 - Wind Baffle (WB-PA3 [x2])*
- *Allows operation to 0° F (-18° C).
- Mounting Base (QSMS1202)
 - Wall Bracket (QSWB2000M-1)

Controls

- Wireless Controller (MHK1)
- Advanced Wired Controller (PAR-31MAA)
- Simple Wired Controller (PAC-YT53CRAU)
- M-NET Adapter (PAC-SF83MA-E)
- Temperature Sensor (PAC-SE41TS)

SPECIFICATIONS:

Rated Conditions (Capacity / Input)*		
Cooling	Btu/h / W	42,000 / 4,340
Heating at 47° F	Btu/h / W	48,000 / 4,660
Heating at 17° F	Btu/h / W	44,000 / 6,050

* Rating Conditions per AHRI Standard:
 Cooling | Indoor: 80° F (27° C)DB / 67° F (19° C)WB; Outdoor: 95° F (35° C) DB / 75° F (24° C)WB
 Heating at 47° F | Indoor: 70° F (21° C)DB / 60° F (16° C)WB; Outdoor: 47° F (8° C) DB / 43° F (6° C)WB
 Heating at 17° F | Indoor: 70° F (21° C)DB / 60° F (16° C)WB; Outdoor: 17° F (-8° C) DB / 15° F (-9° C)WB

Capacity Range		
Cooling	Btu/h	19,000 - 42,000
Heating at 47° F	Btu/h	21,000 - 54,000

Operating Range	
Cooling	0° F** to 115° F (-18° C to 46° C) DB
Heating	-13° F to 70° F (-25° C to 21° C) DB

** With optional wind baffle accessory installed. If not installed, the min. temp. will be 23° F (-5° C) DB.

AHRI Efficiency Ratings	
EER	9.7
SEER	14.8
HSPF	10.0
COP at 47° F	3.02
COP at 17° F	2.13

Electrical Power Requirements	208 / 230V, 1-Phase, 60 Hz
-------------------------------	----------------------------

Minimum Circuit Ampacity (MCA)		
Indoor / Outdoor	A	2.00 / 37

Indoor Unit		
Fan Motor (ECM)	F.L.A.	1.00
Fan Motor Output	W	120
SHF / Moisture Removal		0.71 / 10.9 pt./h
Drain Lift Mechanism (Included)	H: In.	33-7/16

Outdoor Unit		
Compressor		INVERTER
Fan Motor (ECM)	F.L.A.	0.4+0.4
MOCP	A	44

Airflow Rate (Low-M1-M2-Hi)			
Indoor (Cooling)	DRY	CFM	780-880-990-1,090
	WET		740-580-950-1,060
Outdoor	DRY		3,320

Sound Pressure Level			
Indoor (Low-M1-M2-Hi)		dB(A)	34-36-39-41
Outdoor	Cooling		49
	Heating		51

External Dimensions		
Indoor (H x W x D)	In.(mm)	11-3/4 x 33-1/16 x 33-1/16 (298 x 840 x 840)
Outdoor (H x W x D)		52-11/16 x 41-5/16 x 13 + 1-3/16 (1,338 x 800 x 330 + 30)

Net Weight		
Indoor (Unit / Grille)	Lbs.(kg)	55 / 13 (25 / 6)
Outdoor		287 (130)

External Finish	
Indoor	Munsell No. 6.4Y 8.9/0.4
Outdoor	Munsell No. 3Y 7.8 / 1.1

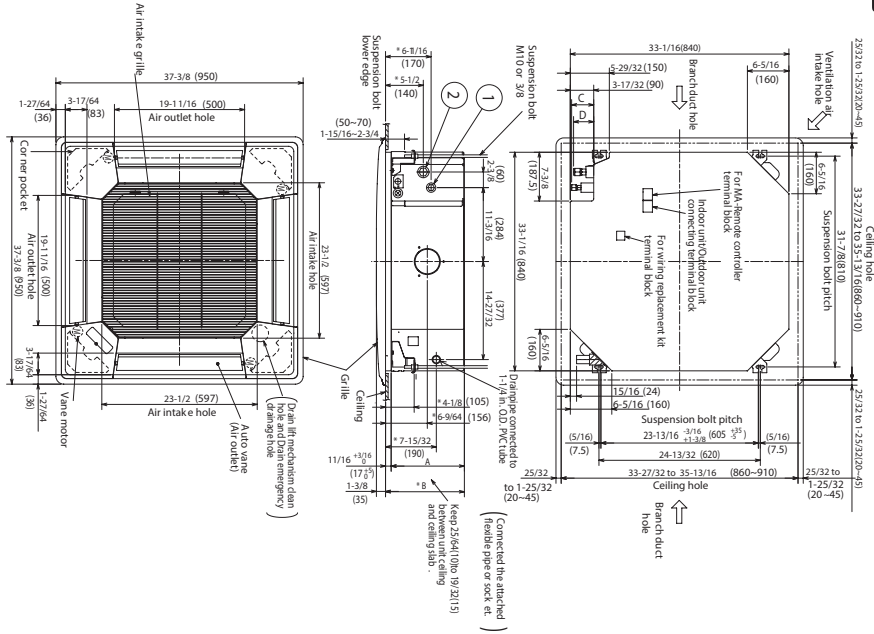
Refrigerant	R410A ; 13lbs. 4oz.
-------------	---------------------

Refrigerant Piping (Flared)		
Liquid (High Pressure)	In.(mm)	3/8 (9.52)
Gas (Low Pressure)		5/8 (15.88)
Maximum Total Refrigerant Pipe Length	Ft. (m)	245 (75)
Maximum Vertical Separation	Ft. (m)	100 (30)

DIMENSIONS: PLA-A42BA6 & PUZ-HA42NKA

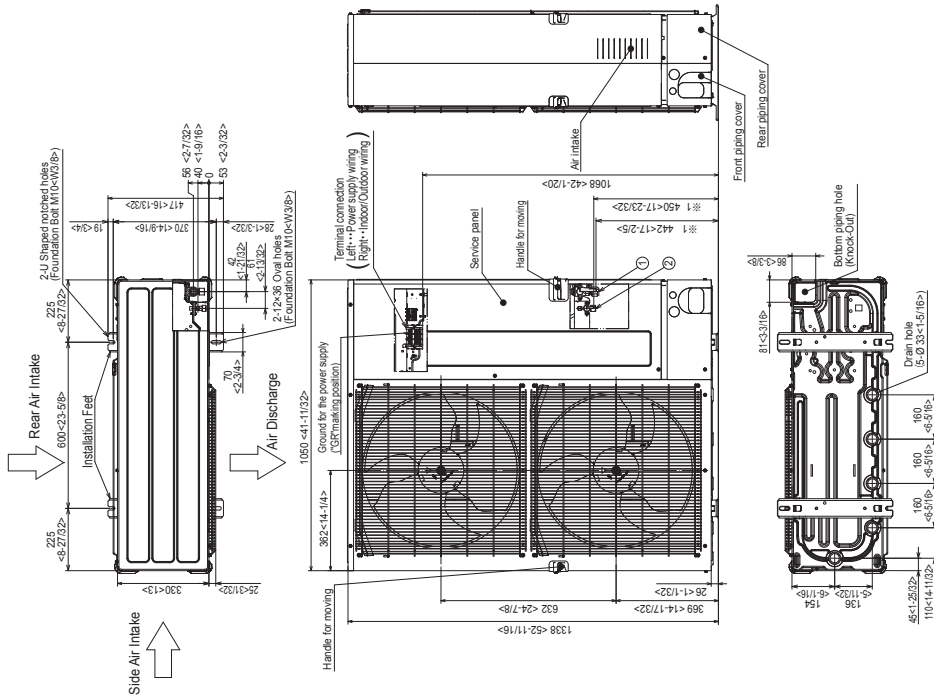
PLA-A42BA6

Unit : inch(mm)



PUZ-HA42NKA

Unit: mm<inch>



COOLING & HEATING

1340 Satellite Boulevard, Suwanee, GA 30024
Toll Free: 800-433-4822 www.mehvac.com

