

# PAC-WHS01HC-E KUMO STATION™



Job Name:

System Reference:

Date:



## SPECIFICATIONS

- 4 channel equipment controller with outside air temperature monitoring
- Manages and stages heat pump and third party supplemental heat
- Setup available through kumo cloud™ app
- Communicates with other equipment wirelessly without internet connectivity
- Able to connect non-powered and powered equipment
- LED function settings
  - Equipment communication
  - Equipment status
- Patent pending algorithm to control system changeover
  - Reduces system changeover occurrence
  - Can set priority zones
- 4 dry contact outputs
- Minimum run time can be changed in 10 minute intervals to avoid frequent system changeovers
- Compatible with Mitsubishi Electric CITY MULTI® units. Contact Mitsubishi Electric representative for more information.
- Ambient temperature range from 32°F (0 °C) - 104°F (40 °C)
- Maximum relative humidity 80%
- Avoid installing in an area of direct sunlight or sources of heat
- Must take into consideration other areas of electronic noise
- Install indoors

## REQUIREMENTS

- Wireless Interface (PAC-USWHS002-WF-1) connected to kumo station™

## PAC-WHS01HC-E KUMO STATION™, CONT.

### ADVANCED FEATURES

- Emergency Operation Switches
- Ability to override the output status of the 4 equipment controller outputs
- Can open or close the contacts at channels 1, 2, 3, 4 to prohibit or permit operation
- Auto mode will allow for remote setting of channels 1, 2, 3, 4
- Channel selection
- Able to be controlled through kumo cloud™ app
  - Requires kumo cloud app version 2.6 or later
- Outdoor Air Temperature sensor optional
  - If not supplied, defaults to heat pump and supplemental heat
  - If fails, the system fails to heat pump and supplemental heat
- Included: Recess panel allows for recessed installation. See instruction manual for more information.
- Wiring and Settings Check
  - Emergency Operations Check: Verifies the current setup will react according to user specifications in the event of an emergency
  - Function Setting Switch Check: Verifies the kumo station™ switches operate according to the user specifications
  - Communication Check
  - Operation Check of Outdoor Air Temperature Sensor

### ACCESSORIES

- Wireless Humidity and Temperature Sensor for kumo cloud™ (PAC-USWHS003-TH-1)<sup>1</sup>
- IT Extender (PAC-WHS01IE-E)<sup>1</sup>
- Outdoor Air Temperature Sensor (C7089U1006/U)<sup>1</sup>
  - Requires AWG 18-22 Power Cable
  - Wire length between sensor and kumo station™ required to be less than 200 ft (60.9 m)
- 24VAC Transformer
  - UL Certification Class 2
- 3rd Party Humidifier, Dehumidifier, Heater, etc
  - 24 VAC Max, 1 Amp each Channel

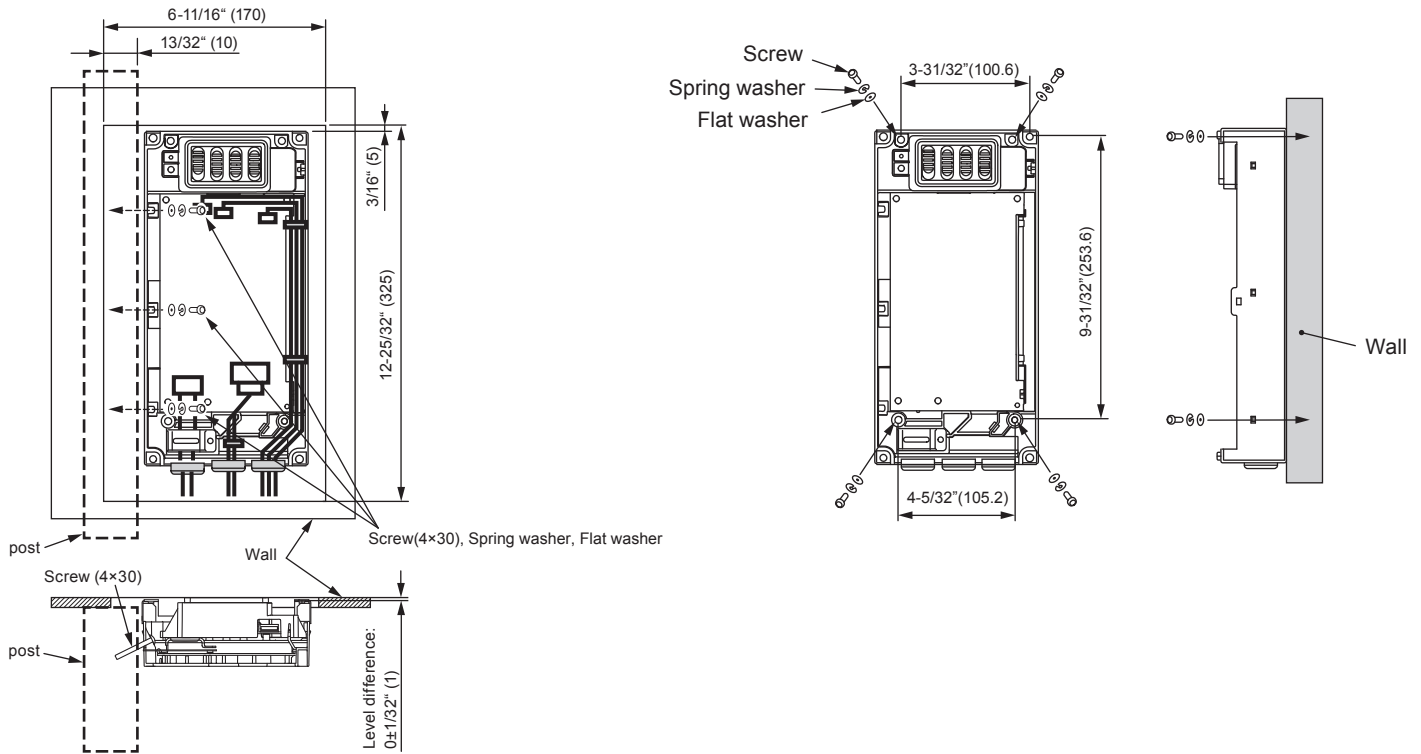
---

<sup>1</sup>See Submittal for information on each option.

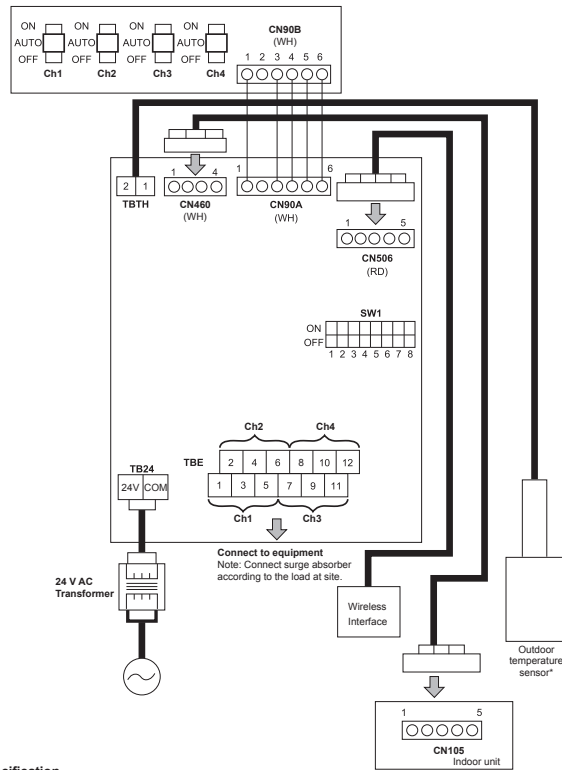
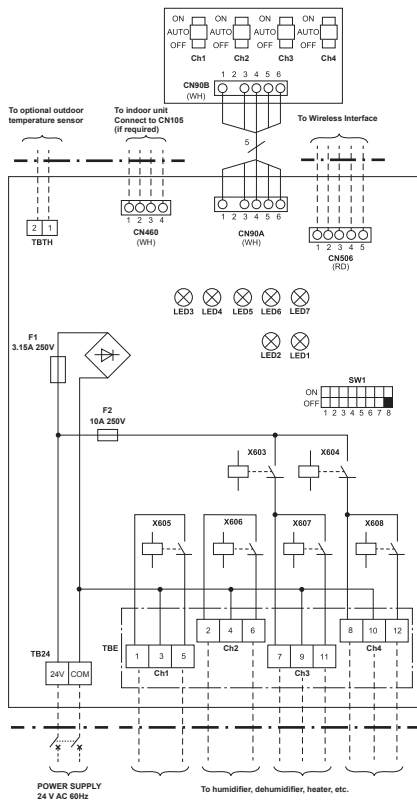
## DIMENSIONS: PAC-WHS01HC-E

- Dimensions W x D x H: 5-31/32" x 2-3/8" x 12-1/16" (152 x 60 x 306 mm)
- Weight: 3.97 lbs (63.5 oz) (1.8 kg)

Unit: inch (mm)



# WIRING DIAGRAMS: PAC-WHS01HC-E



## Wiring specification

Power cable	AWG 18-22
Equipment cable	Connect by caulking a round terminal
Outdoor temperature sensor cable	AWG 16-22 (Note: AWG 18 is recommended)

# COMPATIBILITY CHART

**Table 1. CITY MULTI®**

<b>PMFY-NMBU</b>	(E) NO (ER5) OK (After April 2012)	<b>PCFY-NGMU</b>	(E) NO
<b>PEFY-NMU</b>	(NMU-E) NO (After April 2012)	<b>PCFY-NKMU</b>	(E) NO (E.TH) NO (ER1.TH) OK (After June 2012)
<b>PEFY-NMAU</b>	(E) NO (E2) OK (E3) OK (After April 2012)	<b>PFFY-NEMU</b>	(E) OK (After April 2012)
<b>PEFY-NMHSU</b>	(E) OK (After April 2012)	<b>PFFY-NRMU</b>	(E) OK (After April 2012)
<b>PEFY-NMHU</b>	(E) OK (E2) OK (After April 2012)	<b>PVfy-E00</b>	(A) OK (B) OK (After April 2012)
<b>PEFY-NMLU</b>	(E) NO	<b>PVfy-NAMU</b>	(E) OK (After April 2012)
<b>PEFY-NMSU</b>	(E) NO (ER2) OK (After June 2012)	<b>PKFY-NAMU</b>	(E) NO
<b>PLFY-NAMU</b>	(E) NO	<b>PKFY-NFMU</b>	(E) NO
<b>PLFY-NBMU</b>	(E) NO (ER2) OK (After April 2012)	<b>PKFY-NGMU</b>	(E) NO
<b>PLFY-NCMU</b>	(E) NO (ER4) OK (After June 2012)	<b>PKFY-NBMU</b>	(E) NO (E2) OK (After April 2012)
<b>PLFY-NLMU</b>	(E) NO	<b>PKFY-NHMU</b>	(E) NO (E2) OK (After May 2012)
<b>PCFY-VKM</b>	NO	<b>PKFY-NKMU</b>	(E) NO (E2) OK (After June 2012)

**Table 2. P-Series**

<b>PCA</b>	(GA) NO (KA) NO (KA4) OK (KA4.TH) OK (KA6) OK
<b>PEA</b>	(AA) NO (AA4) OK (AA4R1.TH) OK
<b>PEAD</b>	(AA) NO (AA4) OK (AA5) OK (AA7) OK
<b>PKA</b>	(FA) NO (GA) NO (HA) NO (HAL) NO (HA4) OK (HA6) OK (HA7) OK (KA) NO (KA4) OK (KA6) OK (KA7) OK
<b>PLA</b>	(AA) NO (BA) NO (BA-1) NO (BA4) OK (BA6) OK (EA7) OK
<b>PVA</b>	(AA4) OK (AA7) OK

**Table 3. M-Series**

<b>MFZ-KA</b>	OK
<b>MFZ-KJ</b>	OK
<b>MSZ/Y-A</b>	NO
<b>MSZ/Y-D</b>	(NA) NO (NA-8) OK
<b>MS-WA</b>	NO
<b>MSZ-FD</b>	NO
<b>MSZ-FE</b>	09, 12 (NA) NO 09, 12 (NA-8) OK 18 (NA) OK
<b>MSZ-EF</b>	OK
<b>MSZ/Y-GE</b>	06 to 18 (NA) NO (NA-8) OK (NA-9) OK 24 (NA) OK
<b>MSZ/Y-GL</b>	OK
<b>MSZ-FH</b>	OK
<b>MSZ-HE/HM</b>	NO
<b>MVZ</b>	(AA4) OK
<b>SEZ-KD</b>	(NA) NO (NA4) OK
<b>SLZ-KA</b>	OK

## LEGEND

OK = Compatible

NO = Not compatible

ADPT = Install IT signal adapter PAC-IT51AD-E or PAC-IT52AD-E for compatibility

