

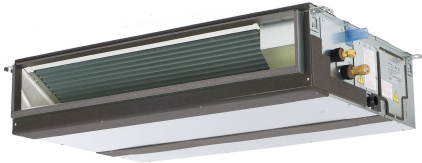
Job Name:

System Reference:

Date:

Indoor Unit:
PEAD-A36AA7

Outdoor Unit:
 PUY-A36NKA7
 PUY-A36NKA7-BS



INDOOR UNIT FEATURES

- Unobtrusive ceiling-concealed design for short-run ductwork.
- Wide ranging external static pressure
- Built-in condensate lift mechanism
- Auto fan speed mode
- Optional FB Series filter boxes for easy access and service
- Ideal for residential homes, retail shopping centers, larger classrooms, office complexes, conference ballrooms, fitness centers, and more

OUTDOOR UNIT FEATURES

- Variable speed INVERTER-driven compressor
- Suction accumulator pre-charged with refrigerant volume for piping length up to 100 ft (70 ft. for A12/18/24/30)
- Low ambient cooling down to -20°F providing 100% capacity (only for PUY models with wind baffles installed)
- 24-hour continuous operation (cooling mode)
- High pressure protection
- Fast restart due to bypass valve make it ideal for equipment cooling applications, such as data centers
- Superior energy and operational efficiency

SPECIFICATIONS: PEAD-A36AA7 & PUY-A36NKA7(-BS)

Model Number	Indoor Unit		PEAD-A36AA7	
	Outdoor Unit		PUY-A36NKA7	
			PUY-A36NKA7-BS	
Cooling ²	Maximum Capacity	Btu/h	36,000	
	Rated Capacity	Btu/h	36,000	
	Minimum Capacity	Btu/h	16,000	
	Maximum Power Input	W	3,000	
	Rated Power Input	W	3,000	
	Moisture Removal	Pints/h	8.10	
	Sensible Heat Factor		0.75	
	Power Factor	%	93.8	
Efficiency	SEER		19.1	
	EER ¹		12.0	
Electrical	Voltage, Phase, Frequency		208 / 230V, 1-phase, 60 Hz	
	Guaranteed Voltage Range	V AC	198 – 253	
	Voltage: Indoor - Outdoor, S1-S2	V AC	208 / 230	
	Voltage: Indoor - Outdoor, S2-S3	V DC	24	
	Voltage: Indoor - Remote controller	V DC	12	
	Recommended Fuse/Breaker Size	A	30	
	Recommended Wire Size (Indoor - Outdoor)	AWG	14	
Indoor Unit	MCA	A	3.30	
	Fan Motor Full Load Amperage	A	2.64	
	Fan Motor Output	W	244	
	Airflow Rate, Dry	CFM	847-1024-1201	
	Airflow Rate, Wet	CFM	807-984-1161	
	External Static Pressure	in.WG	0.14-0.20-0.28-0.40-0.60	
	Sound Pressure Level	dB(A)	33-38-42	
	Drain Pipe Size	In. (mm)	1-1/4 (32)	
	Condensate Lift Mechanism, Max. Distance	In. (mm)	27-9/16 (700)	
	Heat Exchanger Type		Plate fin coil	
	External Finish Color		Galvanized	
	Unit Dimensions	W: In. (mm)		55-1/8 (1400)
		D: In. (mm)		28-7/8 (732)
		H: In. (mm)		9-7/8 (250)
	Package Dimensions	W: In.		65
		D: In.		34-11/16
H: In.			13-7/16	
Unit Weight	Lbs. (kg)		86 (39)	
Package Weight	Lbs.		101	
Indoor Unit Operating Temperature Range	Cooling Intake Air Temp (Maximum / Minimum)	°F	90 DB, 73 WB / 66 DB, 59 WB	

SPECIFICATIONS: PEAD-A36AA7 & PUY-A36NKA7(-BS)

Model Number	Indoor Unit		PEAD-A36AA7	
	Outdoor Unit		PUY-A36NKA7	
			PUY-A36NKA7-BS	
Outdoor Unit	MCA	A	25	
	MOCP	A	31	
	Fan Motor Full Load Amperage	A	0.5 + 0.5	
	Fan Motor Output	W	74 + 74	
	Airflow Rate	CFM	3,880	
	Refrigerant Control	Electronic Expansion Valve		
	Heat Exchanger Type	Cross fin		
	Sound Pressure Level, Cooling ¹	dB(A)	52	
	Compressor Type	INVERTER-driven twin rotary		
	Compressor Model	MNB33FBRMC-L		
	Compressor Rated Load Amps	A	8	
	Compressor Locked Rotor Amps	A	13	
	Compressor Oil Type // Charge	oz.	FV50S // 45	
	External Finish Color	Ivory Munsell 3Y 7.8/1.1		
	Base Pan Heater	n/a		
	Unit Dimensions	W: In. (mm)	41-5/16 (1050)	
		D: In. (mm)	13+1-3/16 (330 + 30)	
		H: In. (mm)	52-11/16 (1338)	
	Package Dimensions	W: In.	42-15/16	
		D: In.	17-11/16	
H: In.		56-4/16		
Unit Weight	Lbs. (kg)	211 (96)		
Package Weight	Lbs.	243 (110)		
Outdoor Unit Operating Temperature Range	Cooling Intake Air Temp (Maximum / Minimum)	°F	115 DB / -20* DB	
Refrigerant	Type	R410A		
	Charge	Lbs, oz	10 lbs, 6 oz	
Piping	Gas Pipe Size O.D. (Flared)	In.(mm)	5/8 (15.88)	
	Liquid Pipe Size O.D. (Flared)	In.(mm)	3/8 (9.52)	
	Maximum Piping Length	Ft. (m)	225 (69)	
	Maximum Height Difference	Ft. (m)	100 (30)	
	Maximum Number of Bends	15		

SPECIFICATIONS: PEAD-A36AA7 & PUY-A36NKA7(-BS)

Notes

AHRI Rated Conditions (Rated data is determined at a fixed compressor speed)	¹ Cooling (Indoor // Outdoor)	°F	80 DB, 67 WB // 95 DB, 75 WB
<p>*Wind baffles required to operate below 23°F DB in cooling mode. PUY with wind baffle: -20°F - 115°F. Refer to wind baffle documentation for further information.</p> <p>**System cuts out in heating mode to avoid thermistor error and automatically restarts at these temperatures.</p>			
<p>SEACOAST PROTECTION</p> <ul style="list-style-type: none"> External Outer Panel: Phosphate coating + Acrylic-Enamel coating Fan Motor Support: Epoxy resin coating (at edge face) Separator Assembly; Valve Bed: Epoxy resin coating (at edge face) “Blue Fin” treatment is an anti-corrosion treatment that is applied to the condenser coil to protect it against airborne contaminants. 			

ACCESSORIES: PEAD-A36AA7

Filter Box with MERV 13 Filters	□ FBM2-4
Signal Receiver	□ PAR-SA9CA-E
Wireless Remote Controller	□ PAR-FL32MA-E
Wireless Remote Receiver	□ PAR-FA32MA-E
Backlit, Wall-mounted, Wireless Controller	□ MHK1
Portable Central Controller	□ MCCH1
Wired MA Controller	□ PAR-33MAA
Simple MA Controller	□ PAC-YT53CRAU
Touch MA Controller	□ PAR-CT01MAU-SB
Wired Remote Sensor	□ PAC-SE41TS-E
Wireless Temperature and Humidity Sensor	□ PAC-USWHS003-TH-1
Outside Air Sensor for MHK1	□ MOS1
Flush Mount Remote Temperature Sensor	□ PAC-USSEN001-FM-1
Wireless Interface	□ PAC-USWHS002-WF-1
Thermostat Interface	□ PAC-US444CN-1
kumo station®	□ PAC-WHS01HC-E
USNAP Interface	□ PAC-WHS01UP-E
IT Extender	□ PAC-WHS01IE-E
BACnet® and Modbus Interface	□ PAC-UKPRC001-CN-1
External Fan / Heater Control Relay Adapter	□ CN24RELAY-KIT-CM3
Connector cable for remote display	□ PAC-SA88HA-EP
Connector for CN32 (remote on/off)	□ PAC-SE55RA-E
Remote Operation Adapter (with wire terminals for remote ON/OFF and operation status/ error) ¹	□ PAC-SF40RM-E
Blue Diamond Sensor Extension Cable—15 Ft.	□ C13-103
MegaBlue Advanced Blue Diamond Condensate Pump w/ Reservoir & Sensor	□ X87-835 - 110 to 250V
MaxiBlue Advanced Blue Diamond Mini Condensate Pump w/ Reservoir & Sensor (208/230V) up to 48,000 Btu/h [recommended]	□ X87-721 - 208/230V
Drain Pan Level Sensor (Control for indoor unit shut off to prevent drain pan overflow)	□ DPLS2
3 Pole Disconnect Switch (30A/600VUL) [fits 2"X4" utility] - Black	□ TAZ-MS303
3 Pole Disconnect Switch (30A/600VUL) [fits 2"X4" utility] - White	□ TAZ-MS303W

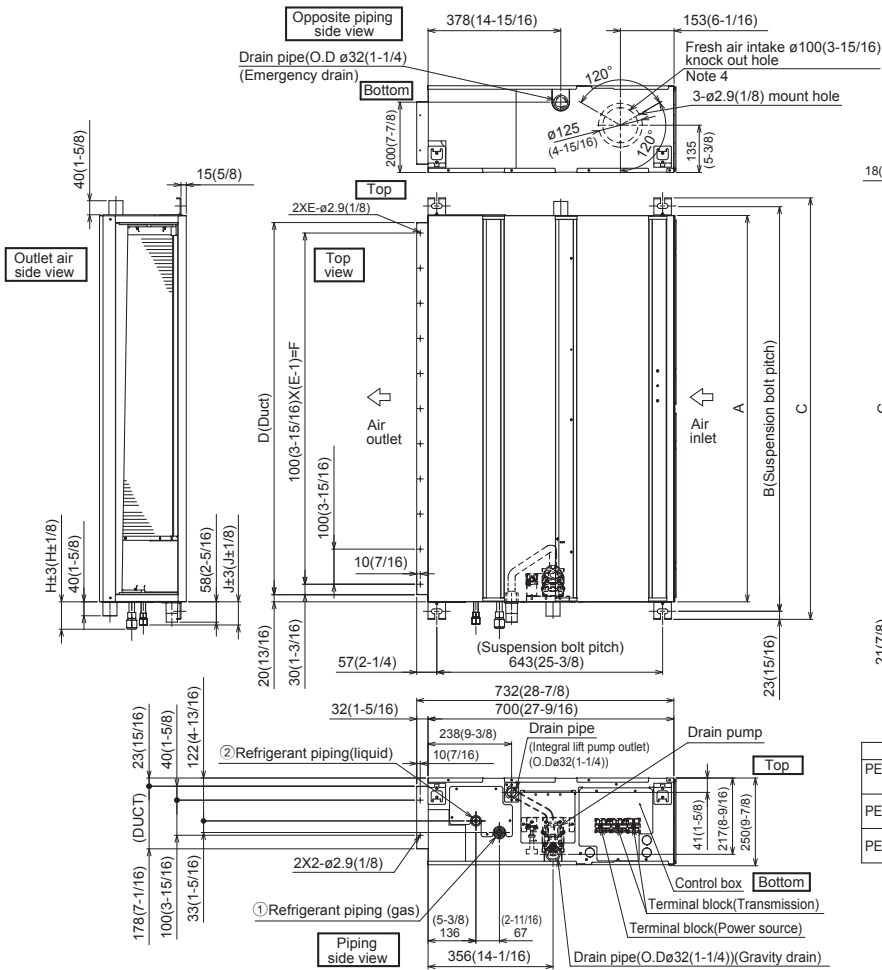
¹ Unable to use with wireless remote controller

ACCESSORIES: PUY-A36NKA7(-BS)

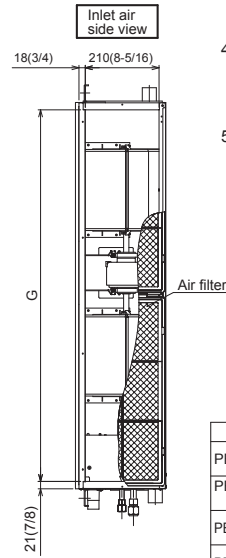
Twining Distribution Pipe (50:50)	□ MSDD-50TR-E
Air Outlet Guide	□ PAC-SH96SG-E (two pieces are required)
Front Wind Baffle	□ WB-PA3 (two pieces are required)
Drain Socket	□ PAC-SG61DS-E
M-NET Converter	□ PAC-SF83MA-E
M-NET Converter	□ PAC-SJ95MA-E
Control/Service Tool	□ PAC-SK52ST
Condensing Unit Mounting Pad 24" x 42" x 3"	□ ULTRILITE2
Outdoor Unit Stand—12" High	□ QSMS1202M
Outdoor Unit Stand—18" High	□ QSMS1802M
Outdoor Unit Stand—24"High	□ QSMS2402M
Heavy Duty Wall Mounting Bracket for Outdoor Units—Coated Steel	□ QSWB2000M-1
Heavy Duty Wall Mounting Bracket for Outdoor Units—316 Series Stainless Steel	□ QSWBSS
3/8" x 5/8" x 10' / 1/2" Lineset (Twin-Tube Insulation)	□ MPLS385812T-10
3/8" x 5/8" x 15' / 1/2" Lineset (Twin-Tube Insulation)	□ MPLS385812T-15
3/8" x 5/8" x 30' / 1/2" Lineset (Twin-Tube Insulation)	□ MPLS385812T-30
3/8" x 5/8" x 50' / 1/2" Lineset (Twin-Tube Insulation)	□ MPLS385812T-50
3/8" x 5/8" x 65' / 1/2" Lineset (Twin-Tube Insulation)	□ MPLS385812T-65
3/8" x 5/8" x 100' / 1/2" Lineset (Twin-Tube Insulation)	□ MPLS385812T-100

DIMENSIONS: PEAD-A36AA7 & PUY-A36NKA7 (-BS)

PEAD-A36AA7



- Note 1. Use an M10 screw for the suspension bolt (field supply).
 2. Keep the service space for maintenance at the bottom.
 3. This drawing is for PEAD-A24-30-36-42 AA7 models, which have 2 fans. PEAD-A09-12-15-18AA7 models have 1 fan.
 4. If the inlet duct is used, remove the air filter (supplied with the unit), then install the filter (field supply) at the suction side.
 5. Heat air to 0°C (32°F) or higher when taking fresh air with a fresh air intake.



Unit:mm (in.)

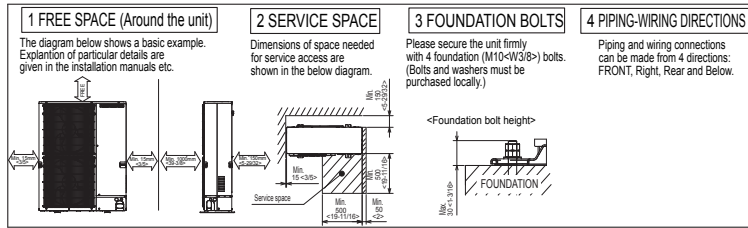
Model	J	① Gas pipe	② Liquid pipe
PEAD-A09AA7	62 (2-1/2)	$\phi 9.52$ (3/8)	$\phi 6.35$ (1/4)
PEAD-A12, 15, 18AA7	62 (2-1/2)	$\phi 12.7$ (1/2)	$\phi 6.35$ (1/4)
PEAD-A24,30AA7	66 (2-5/8)	$\phi 15.88$ (5/8)	$\phi 9.52$ (3/8)
PEAD-A36,42AA7			

Unit:mm (in.)

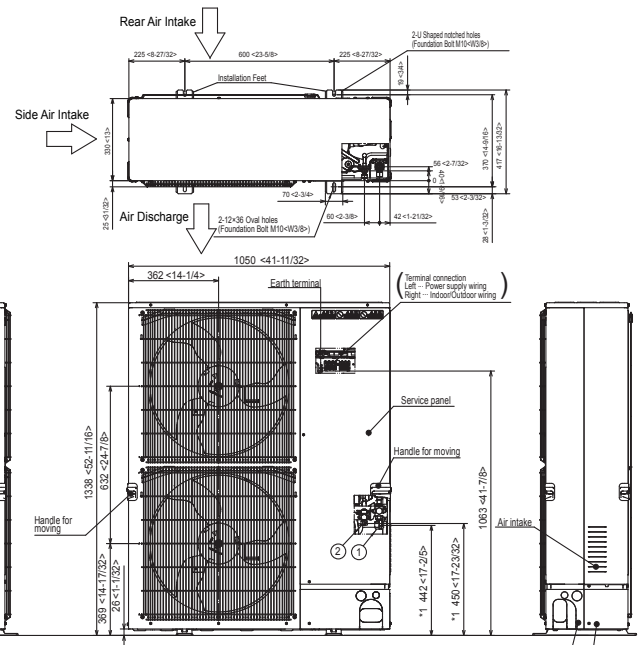
Model	A	B	C	D	E	F	G	H
PEAD-A09,12, 15,18AA7	900 (35-7/16)	954 (37-9/16)	1000 (39-3/8)	860 (33-7/8)	9	800 (31-1/2)	858 (33-13/16)	72 (2-7/8)
PEAD-A24,30AA7	1100 (43-5/16)	1154 (45-7/16)	1200 (47-1/4)	1060 (41-3/4)	11	1000 (39-3/8)	1058 (41-11/16)	78 (3-1/8)
PEAD-A36,42AA7	1400 (55-1/8)	1454 (57-1/4)	1500 (59-1/16)	1360 (53-9/16)	14	1300 (51-3/16)	1358 (53-1/2)	

DIMENSIONS: PEAD-A36AA7 & PUY-A36NKA7 (-BS)

PUY-A36NKA7(-BS)

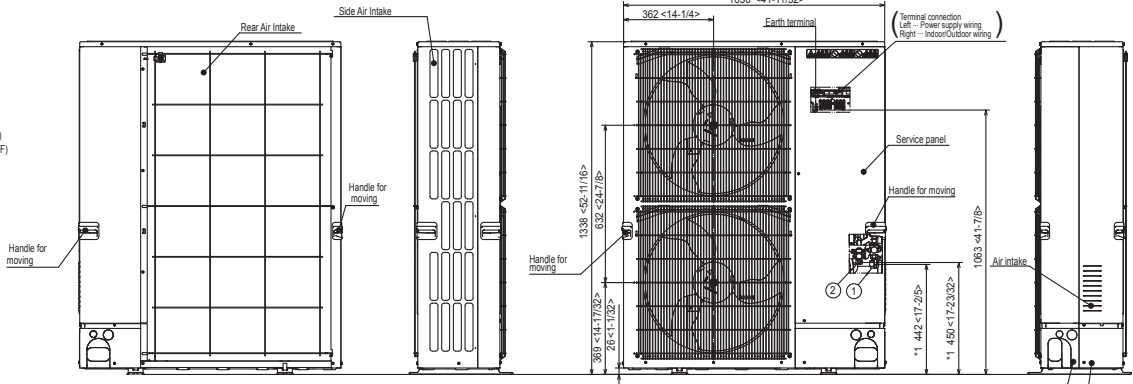


Unit: mm<in>

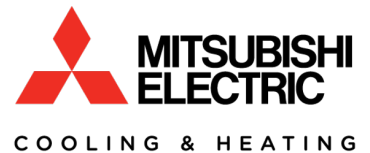
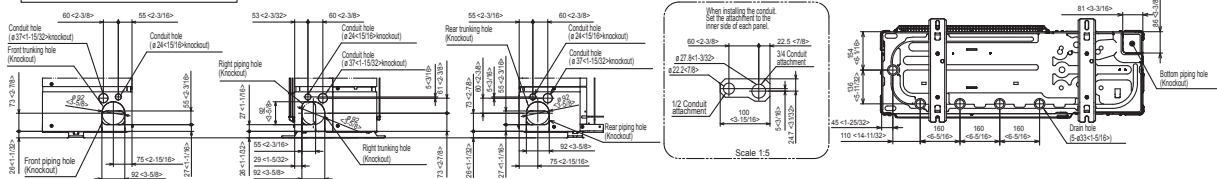


Example of Notes

- ① - Refrigerant GAS pipe connection (FLARE) ø15.88(5/8F)
- ② - Refrigerant LIQUID pipe connection (FLARE) ø9.52(3/8F)
- *1 - Indication of STOP VALVE connection location.



Piping Knockout Hole Details



1340 Satellite Boulevard, Suwanee, GA 30024
Toll Free: 800-433-4822 www.mehvac.com

FORM# PEAD-A36AA7 / PUY-A30NKA7(-BS) - 201810

