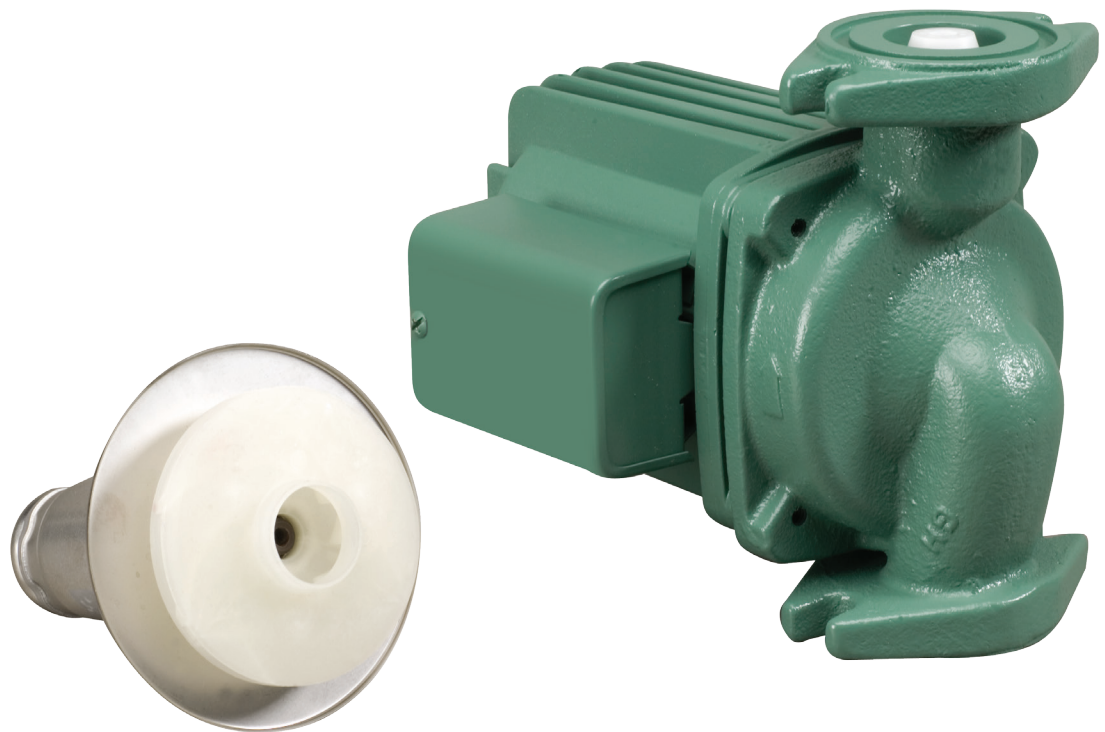


Model 0011-IFC® Cartridge Circulator

The High Velocity series 0011-IFC includes an Integral Flow Check, saving installation costs while improving system performance. The removable, spring loaded IFC® replaces a separate in-line flow check and prevents gravity flow when the circulator is not operating. Available in Cast Iron or Stainless Steel construction.



Low-Lead
Compliant



Submittal Data Information

Model 0011-IFC® Cartridge Circulator

Submittal Data # 101-084
Supersedes: 04/22/10

Effective: 06/10/13

Features

- Integral Flow Check (IFC®)
Prevents gravity flow
Eliminates separate in-line flow check
Reduces installed cost, easy to service
Improved performance vs. In-line flow checks
- Unique replaceable cartridge
— Field serviceable
- Unmatched reliability
— Maintenance free
- Quiet, efficient operation
- Direct drive-Low power consumption
- Self lubricating, No mechanical seal
- Standard high capacity output
— Compact design
- Wide range of applications
- Cast Iron or Stainless Steel construction, Flanged connections

Materials of Construction

Casing (Volute): Cast Iron or Stainless Steel
Integral Flow Check:
Body, Plunger.....Acetal
O-ring Seals.....EPDM
Spring.....Stainless Steel
Stator Housing:.....Aluminum
Cartridge:.....Stainless Steel
Impeller:.....Non-Metallic
Shaft:.....Ceramic
Bearings:.....Carbon
O-Ring & Gaskets:.....EPDM

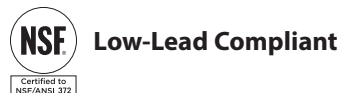
Model Nomenclature

F – Cast Iron, Flanged
SF – Stainless Steel, Flanged
IFC – Integral Flow Check

Performance Data

Max. Flow: 30 GPM
Max. Head: 31 Feet
Min. Fluid Temperature: 40°F (4°C)
Max. Fluid Temperature: 230°F (110°C)
Max. Working Pressure: 125 psi
Connection Sizes:
3/4", 1", 1-1/4", 1-1/2" Flange

Certifications & Listings

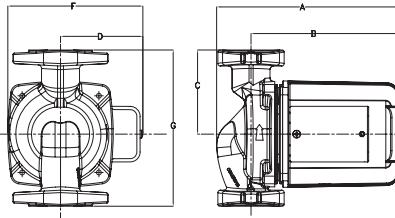


Application

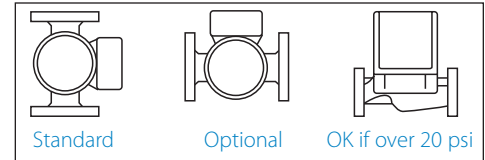
The 0011-IFC with an Integral Flow Check is designed to reduce installation costs when zoning with 00° circulators. Typical uses include large residential or light commercial high head / medium flow applications such as hydronic or radiant heating, hydro-air fan coils, indirect water heaters or domestic water recirculation systems. By locating the removable, spring-loaded IFC inside the pump casing, a separate in-line flow check is eliminated. The reduced pressure drop of the IFC increases the 0011 flow performance over in-line check valves. Both the IFC and cartridge are easily accessed for service instead of replacing the entire unit.

Pump Dimensions & Weights

Models	Casing	A		B		C		D		F		G		Ship Wt.	
		in.	mm	in.	mm	in.	mm	in.	mm	in.	mm	in.	mm	lbs.	Kg
0011-F4-2 IFC	Cast Iron	7-1/2	191	6-1/8	156	3-1/2	89	3-5/16	84	5-1/2	140	6-1/2	165	12.0	5.5
0011-SF4-IFC	St. Steel	7-1/2	191	6-1/8	156	3-1/2	89	3-5/16	84	5-1/2	140	6-1/2	165	12.0	5.5



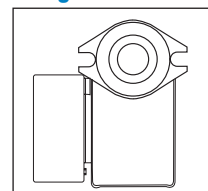
Mounting Positions



Electrical Data

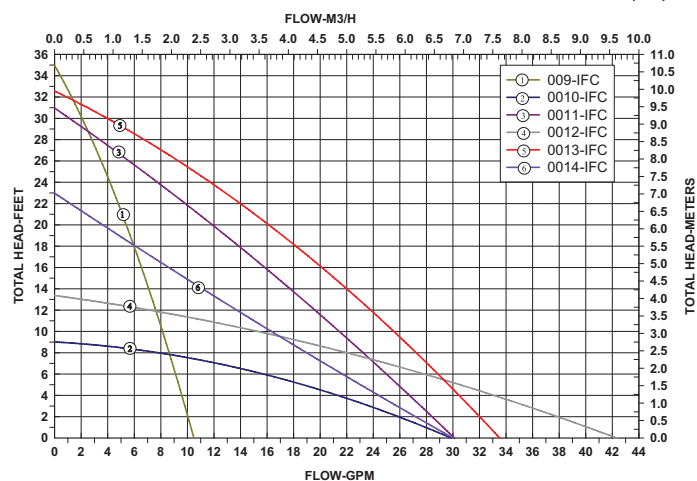
Model	Volts	Hz	Ph	Amps	RPM	HP
All Models	115	60	1	1.76	3250	1/8
Motor Type	Permanent Split Capacitor Impedance Protected					
Motor Options	220/50/1, 220/60/1, 230/60/1, 100/110/50/60/1					

Flange Orientation



Performance Field - 60Hz

Taco INTEGRAL FLOWCHECK (IFC) MODELS



Taco Inc., 1160 Cranston Street. Cranston, RI 02920 / (401) 942-8000 / Fax (401) 942-2360
Taco (Canada) Ltd., 8450 Lawson Road, Unit #3, Milton, Ontario L9T 0J8 / (905) 564-9422 / Fax (905) 564-9436
www.taco-hvac.com